

Service Manual for L1 and L2

Nokia Asha 205 / 2050

Dual SIM

Nokia Asha 205

RM-862, RM-863, RM-864

Key features

- QWERTY keyboard
- Nokia Xpress Browser
- EA Games Gift - download free games from EA
- Easy content sharing with Nokia Slam

Check the repair policy before performing any mechanical repair on Service Level 1&2!



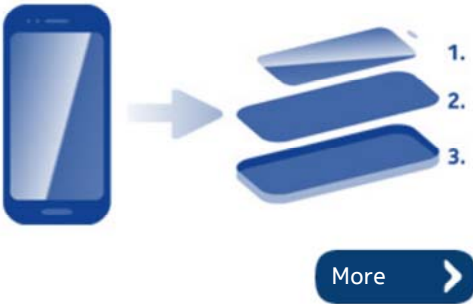
Version 1.0

Exploded view



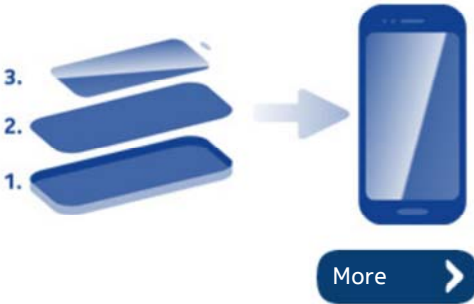
More >

Disassembly steps



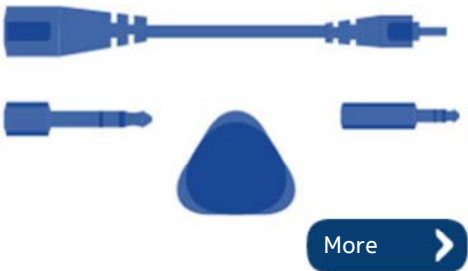
More >

Assembly hints



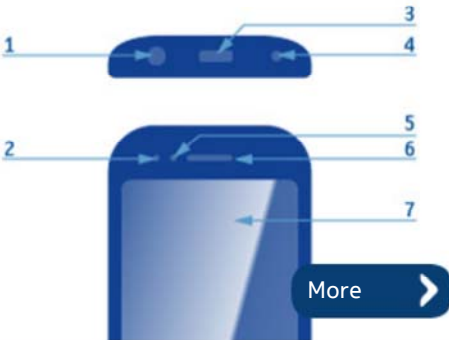
More >

Service devices



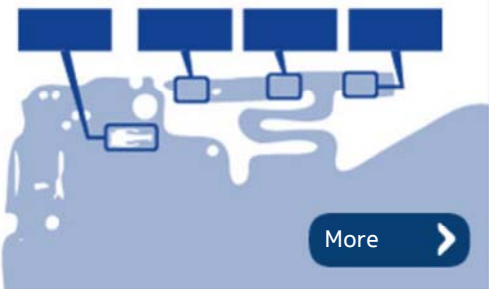
More >

Product controls and interfaces



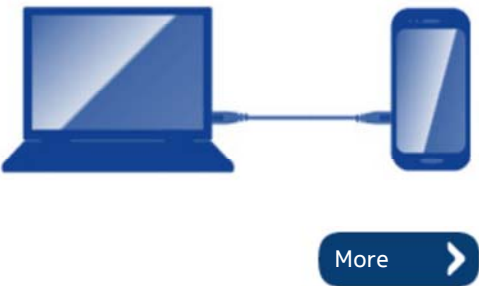
More >

Solder components



More >

Service concept



More >

Nokia Asha 205

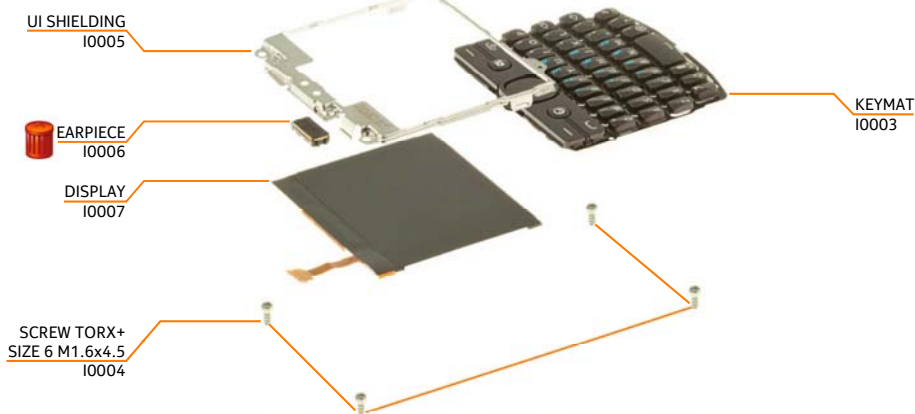
RM-863, RM-864

Exploded view

Nokia Care
 Academy

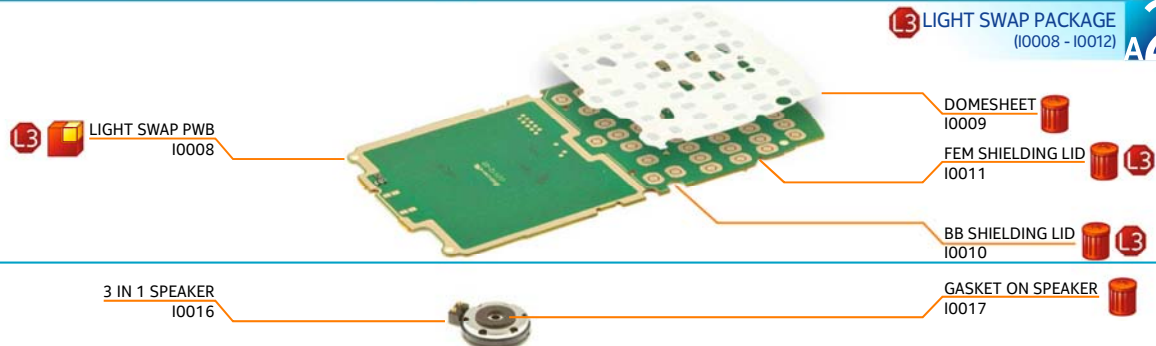
A1

A-COVER ASSEMBLY
 (I0001, I0002)



L3 LIGHT SWAP PACKAGE
 (I0008 - I0012)

A2



A3

D-COVER ASSEMBLY
 (I0013 - I0015)



B-COVER
I0019



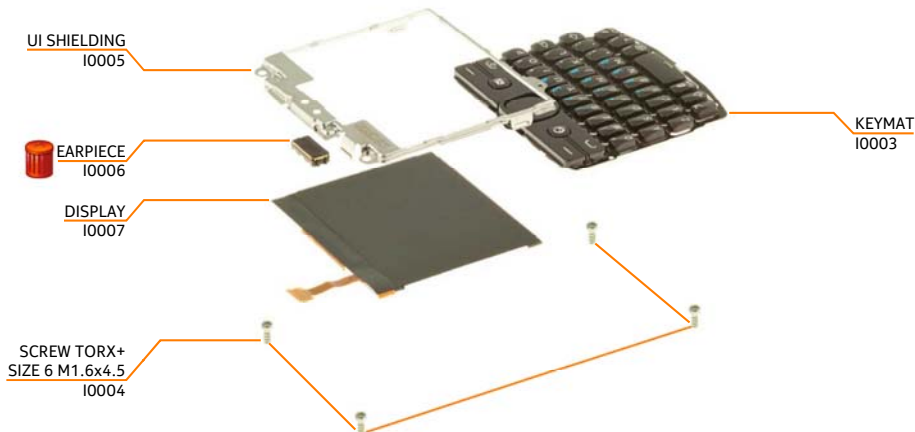
v1.0

Only available as assembly

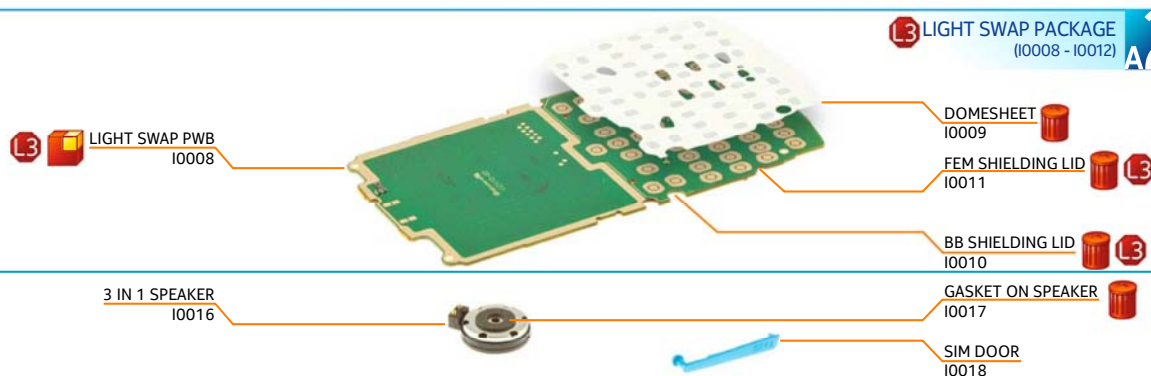
Not reusable after removal

Repair/swap only in level 3

A1 A-COVER ASSEMBLY (I0001, I0002)



L3 LIGHT SWAP PACKAGE (I0008 - I0012) A2



A3 D-COVER ASSEMBLY L3 (I0013 - I0015)



v1.0

Only available as assembly

Not reusable after removal

L3 Repair/swap only in level 3



For disassembling you need the Nokia Standard toolkit version 2. You will also need a DC plug and an AV plug. Note that the disassembly instructions are made with the dual SIM variant (RM-862).



Protect the A-COVER with protective film.



Lift up the B-COVER from the shown place. Remove the B-COVER.



Unscrew the two Torx+ size 6 screws in the order shown.



Start to release the A-COVER with the SRT-6 from the top left side of the device. Work towards the bottom end with the SRT-6 and open the shown clips holding the A-COVER.



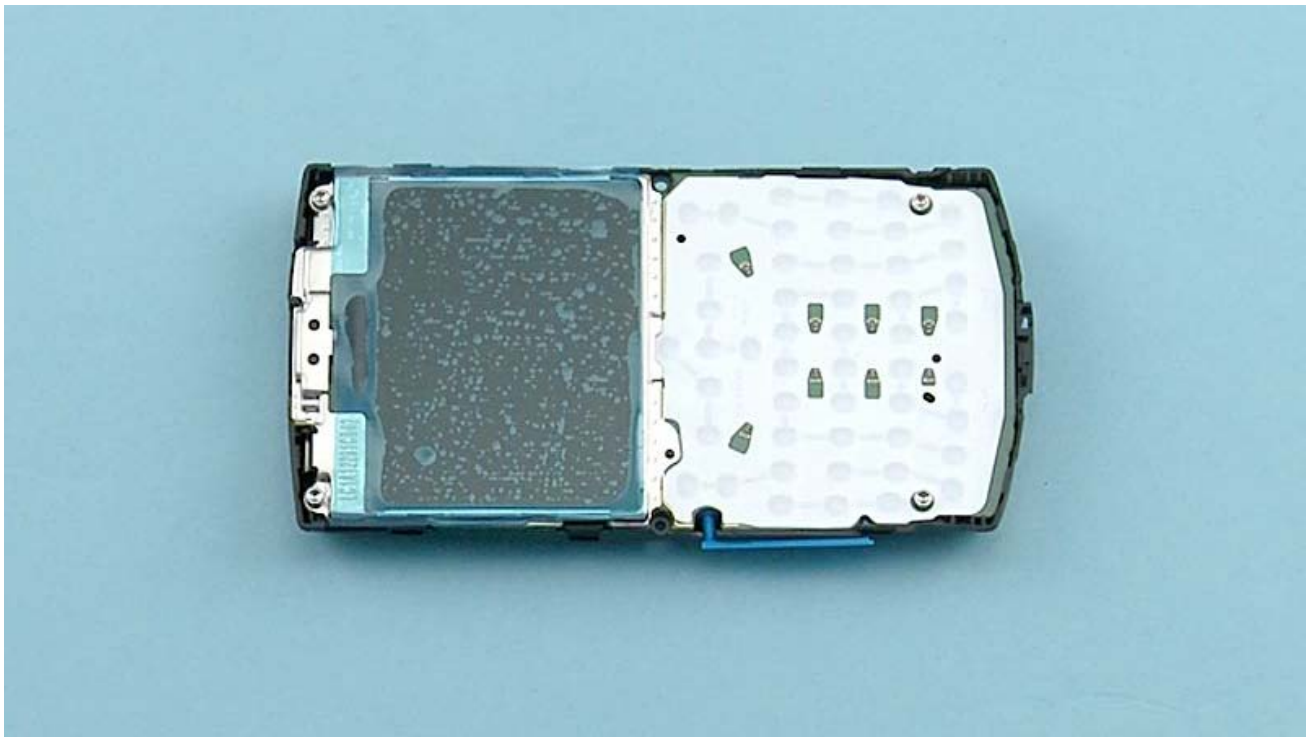
Continue releasing the A-COVER from the top right side of the device. Open all the shown clips on the right side with the SRT-6.



Finally open the three clips on the bottom end.



The A-COVER can now be separated.



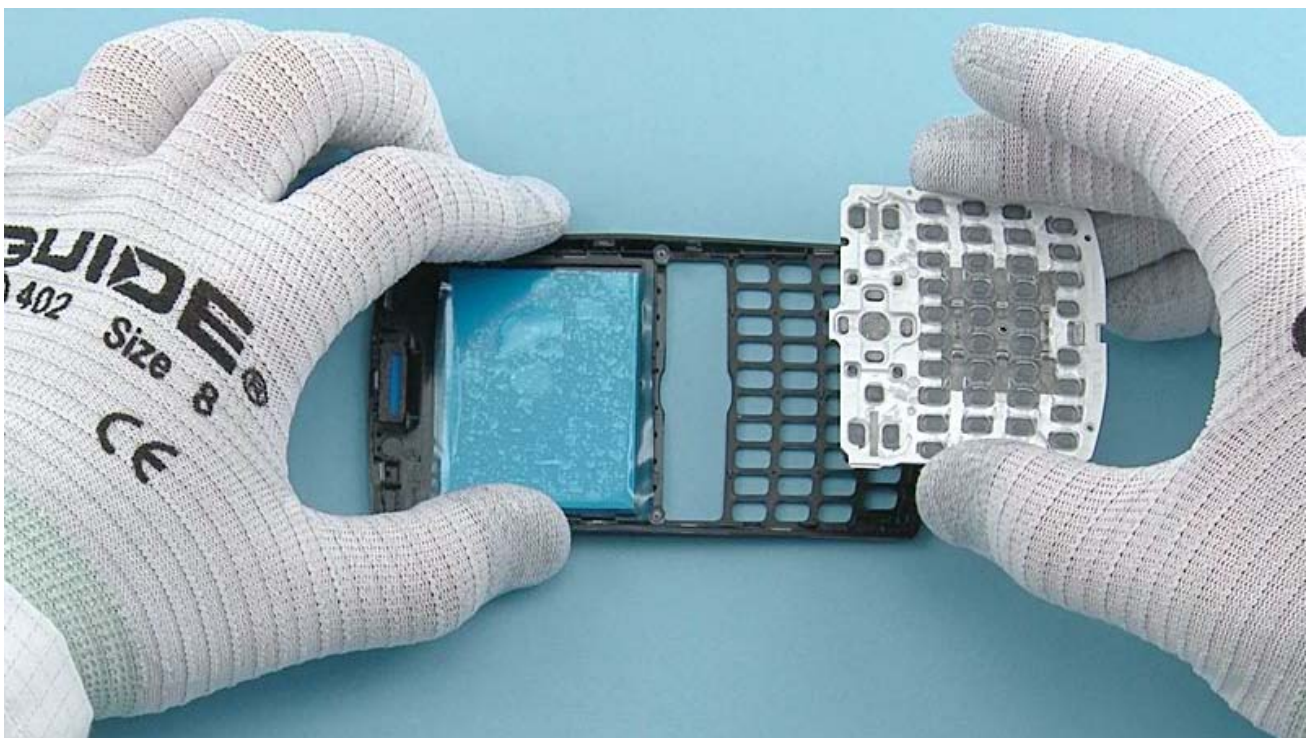
Protect the DISPLAY with protective film.



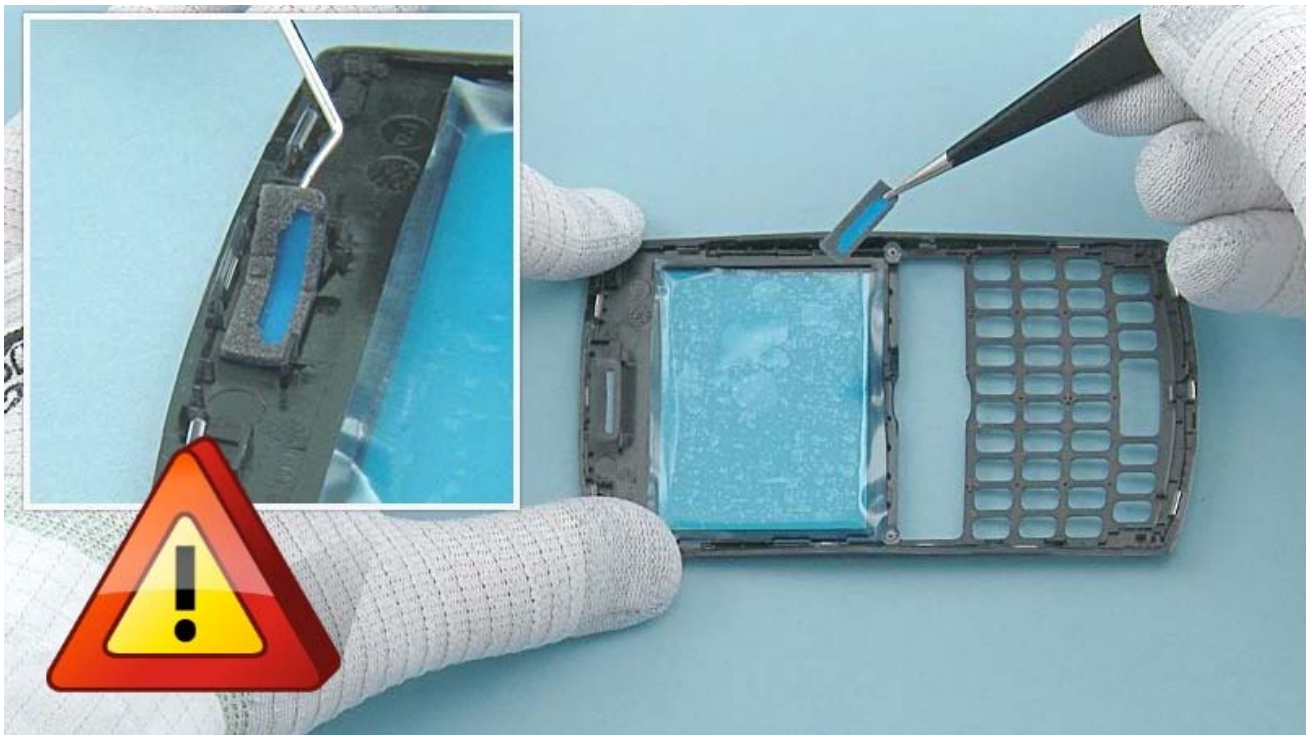
Protect also the other side of the A-COVER window.



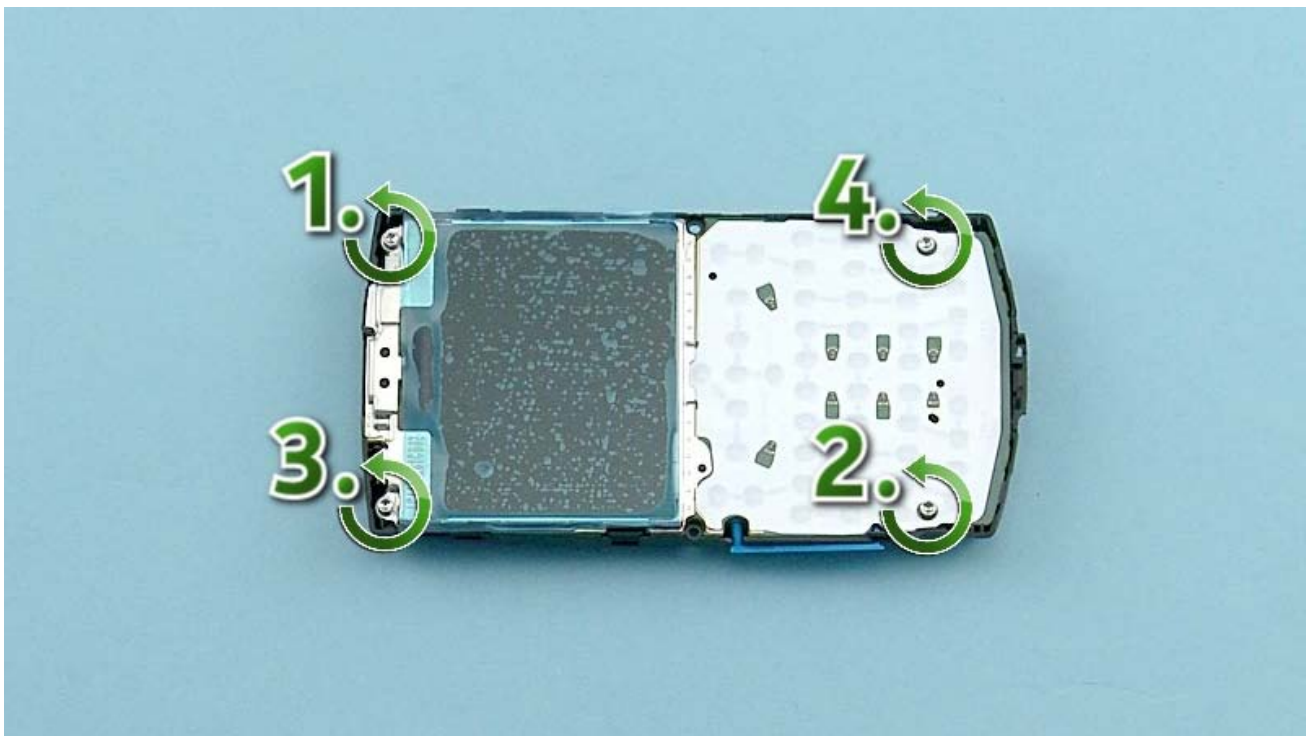
Use the SRT-6 to open the four clips holding the KEYMAT.



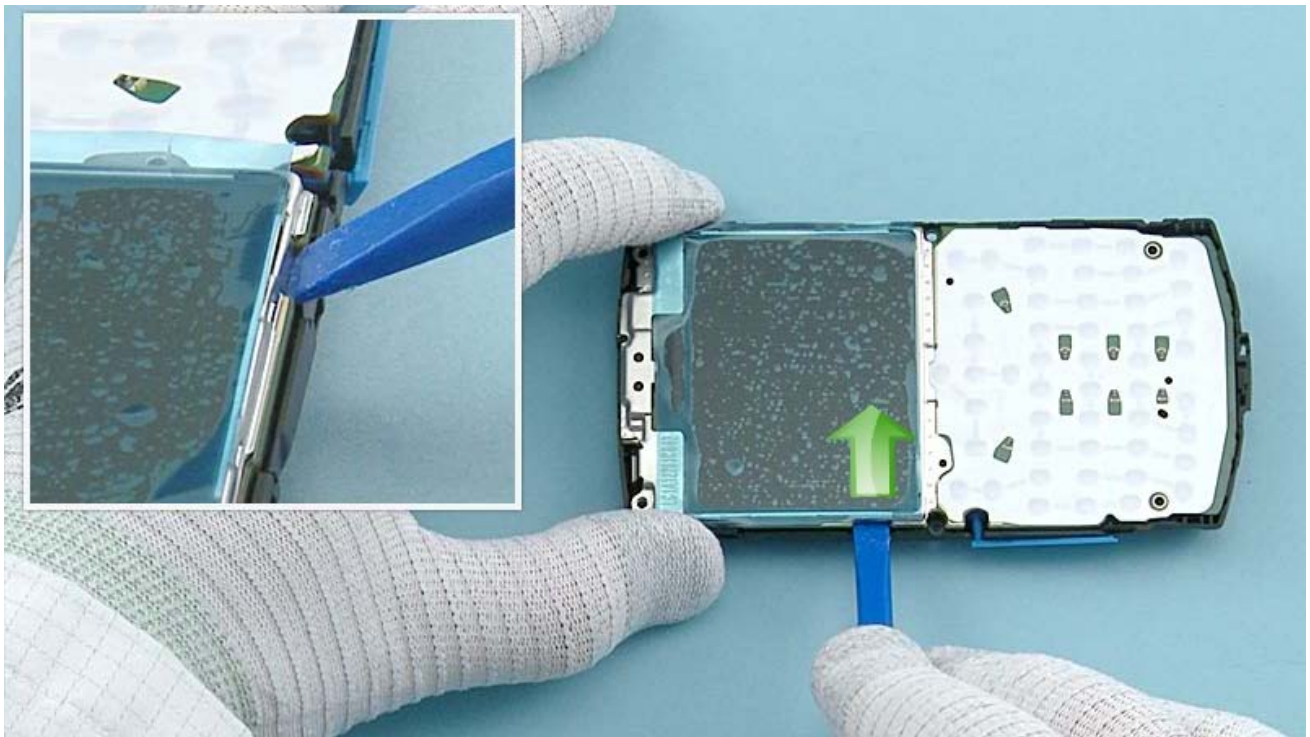
Remove the KEYMAT.



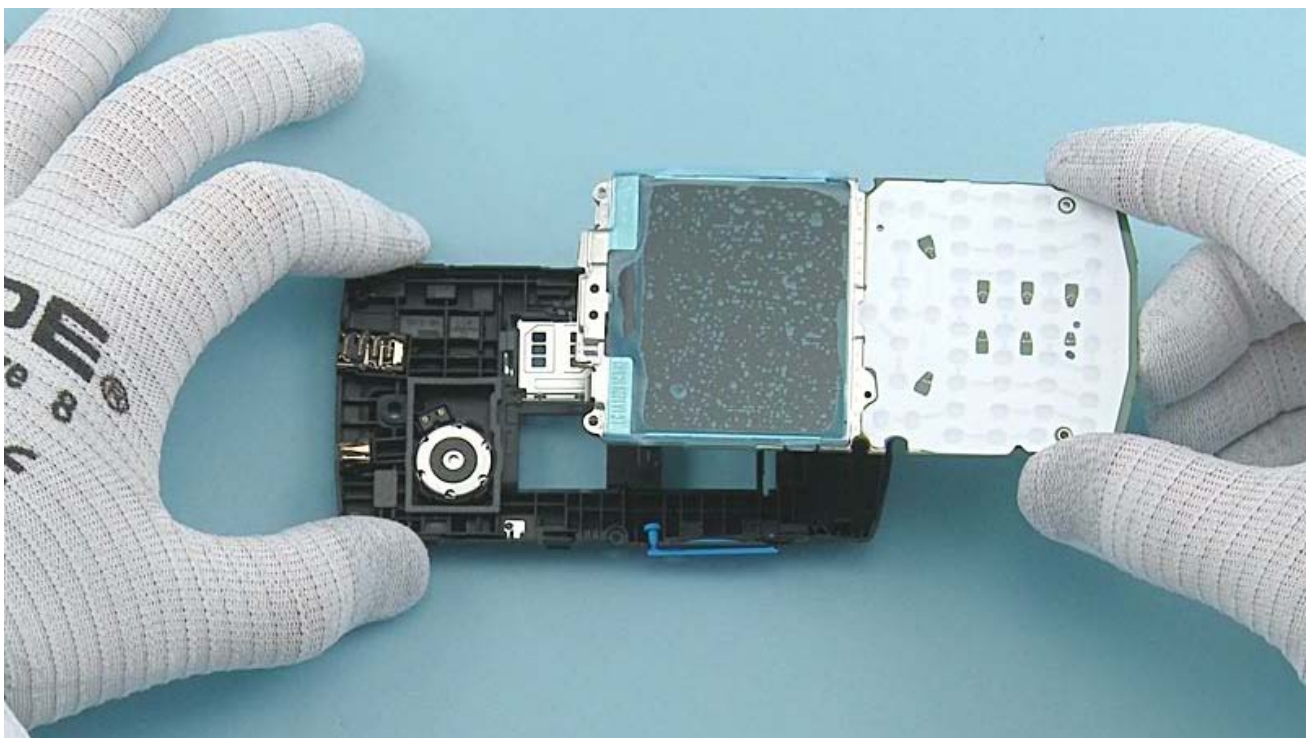
Release the EARPIECE MESH with the dental tool. Be careful not to injure yourself with the sharp end of the dental tool. Remove the EARPIECE MESH with tweezers.



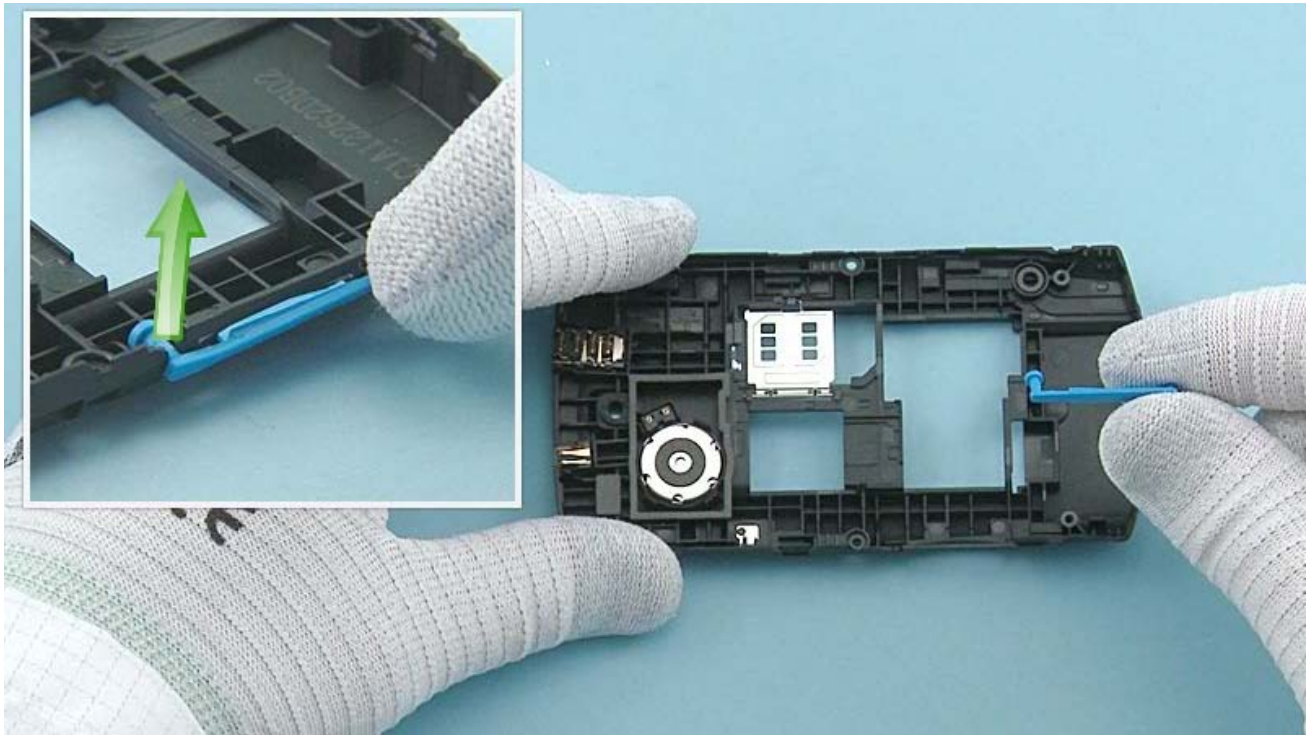
Unscrew the four Torx+ size 6 screws in the order shown.



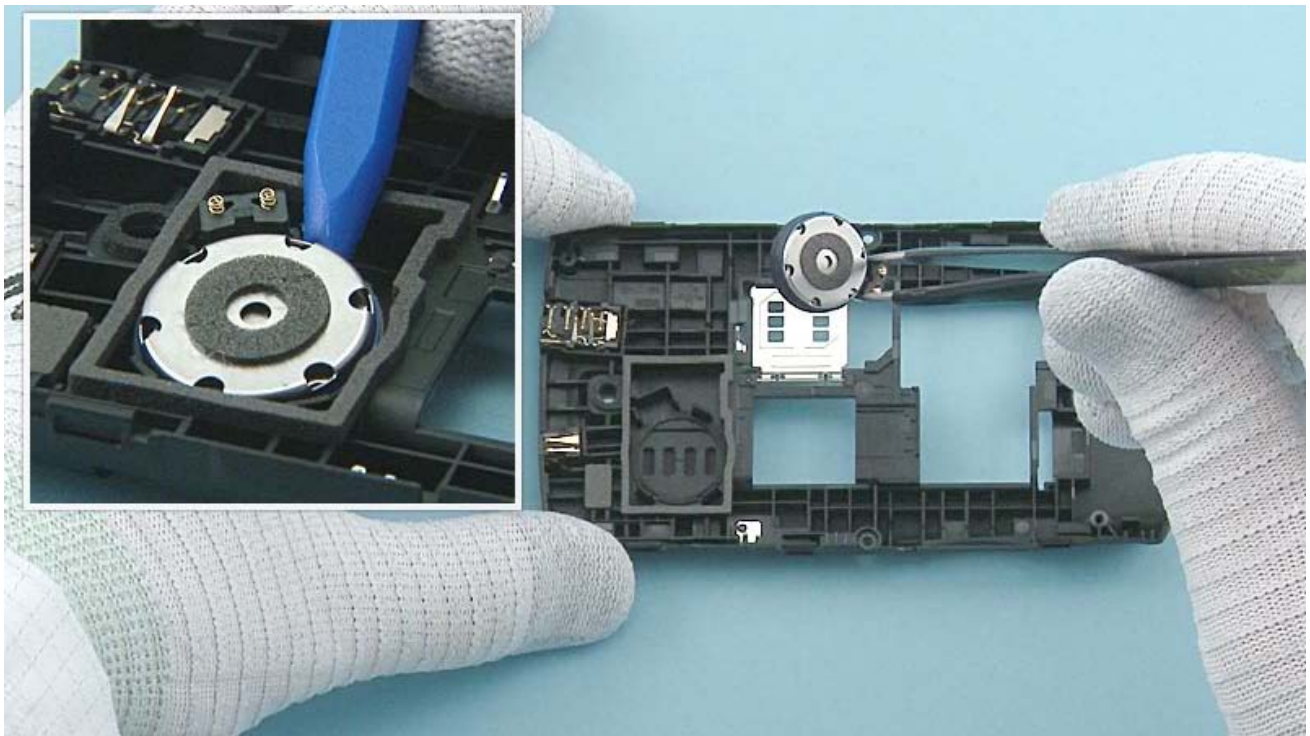
Lever up the ENGINE BOARD with the SS-93 from the shown place.



The ENGINE BOARD can now be separated from the D-COVER.



Open the SIM DOOR and remove it by pulling it up. Note that this step applies only with the dual SIM variant (RM-862).



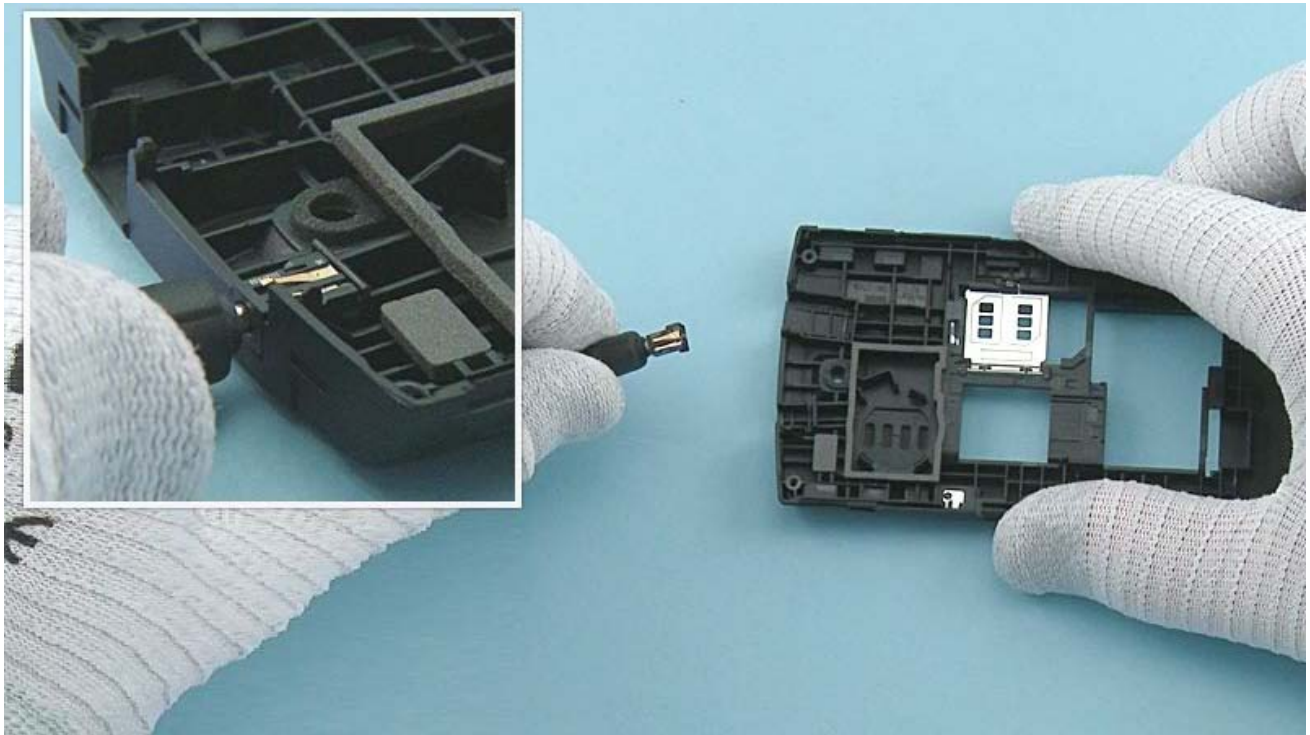
Lever up the 3 IN 1 SPEAKER with the sharp end of the SS-93. Remove the 3 IN 1 SPEAKER with tweezers.



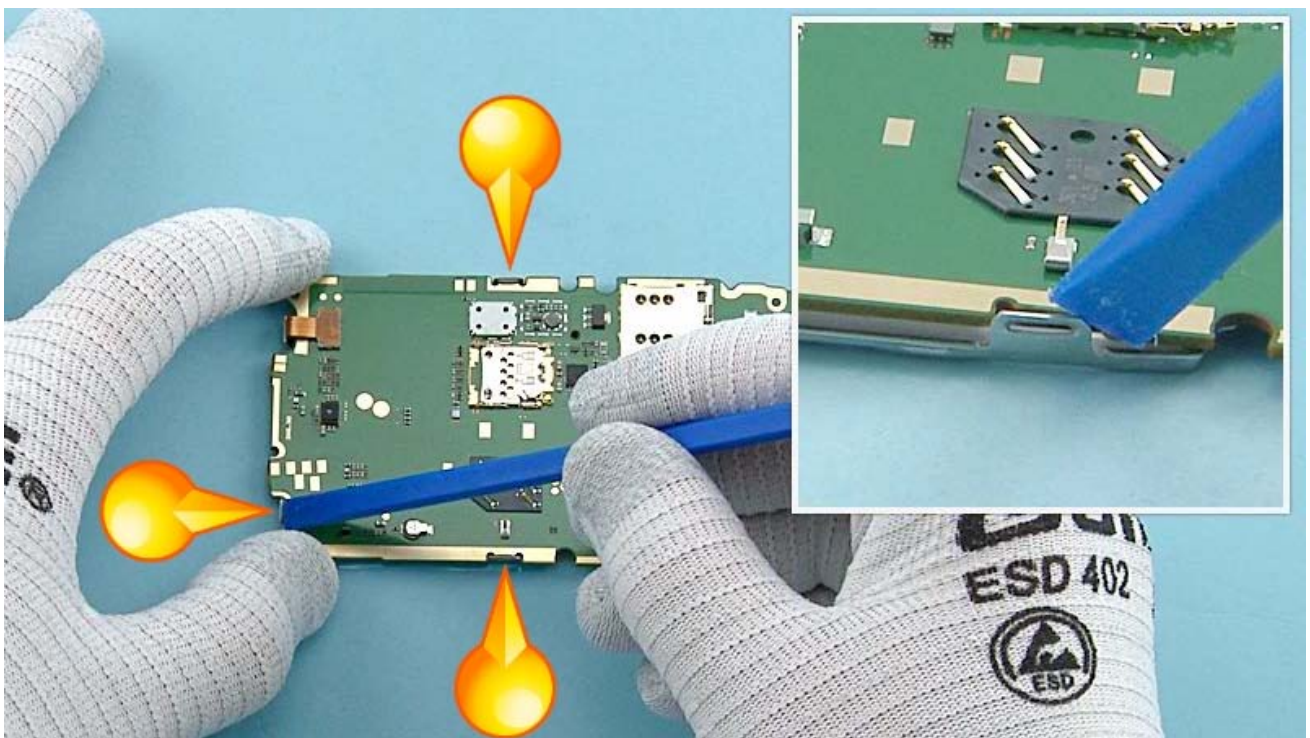
Use the dental tool to release the GASKET ON SPEAKER. Remove the GASKET ON SPEAKER and discard it.



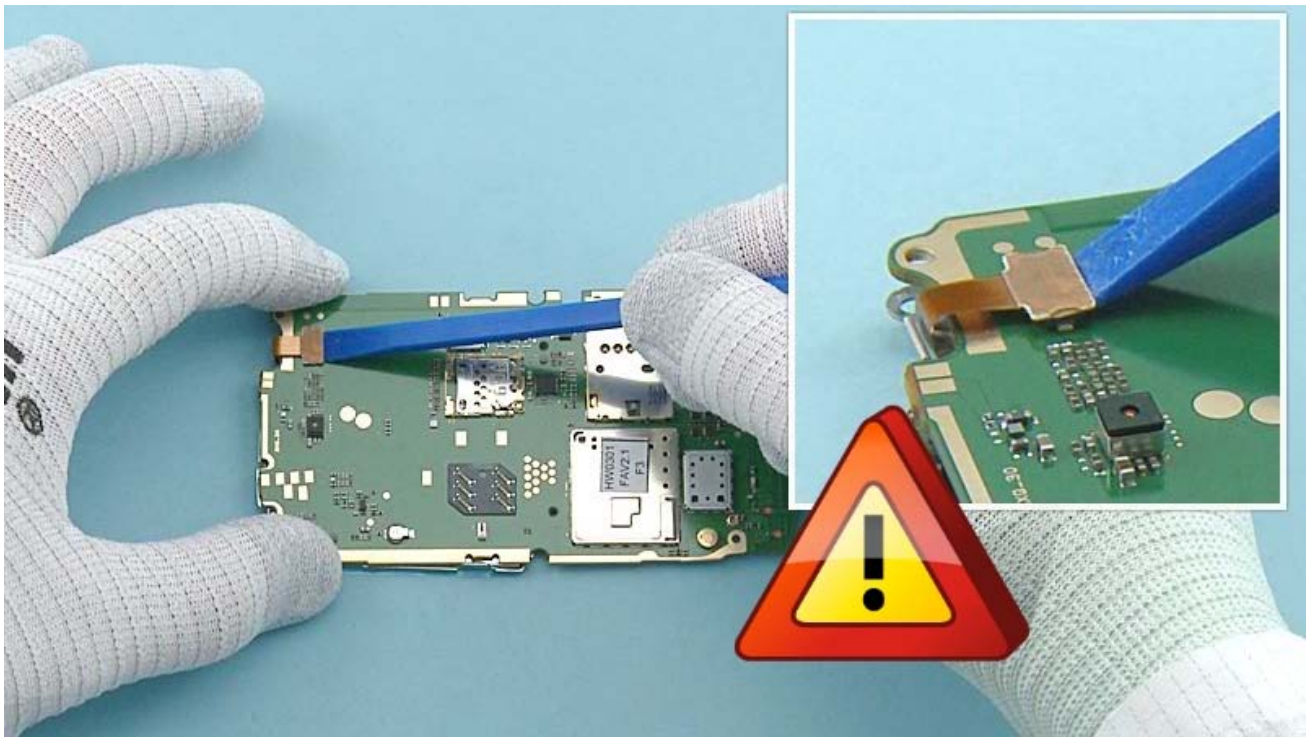
Use an AV plug to lift up and remove the AV JACK.



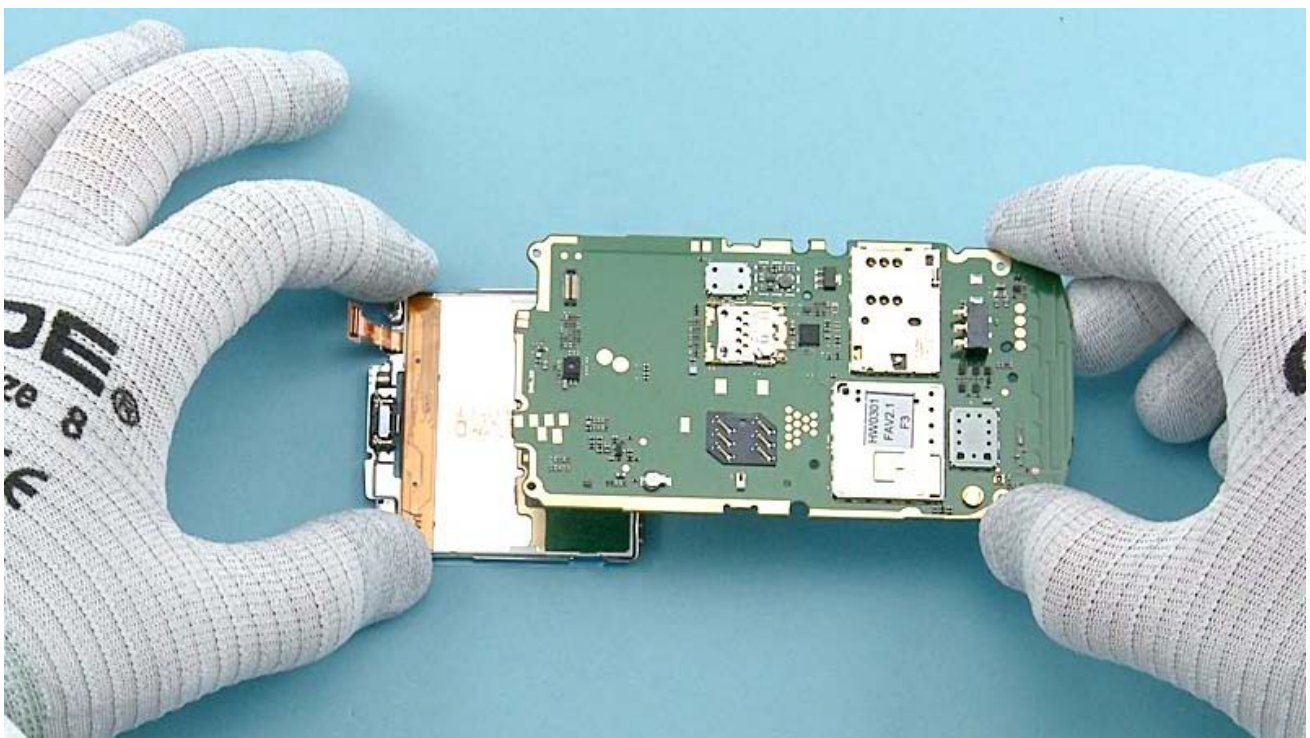
Use a DC plug to lift up and remove the DC JACK.



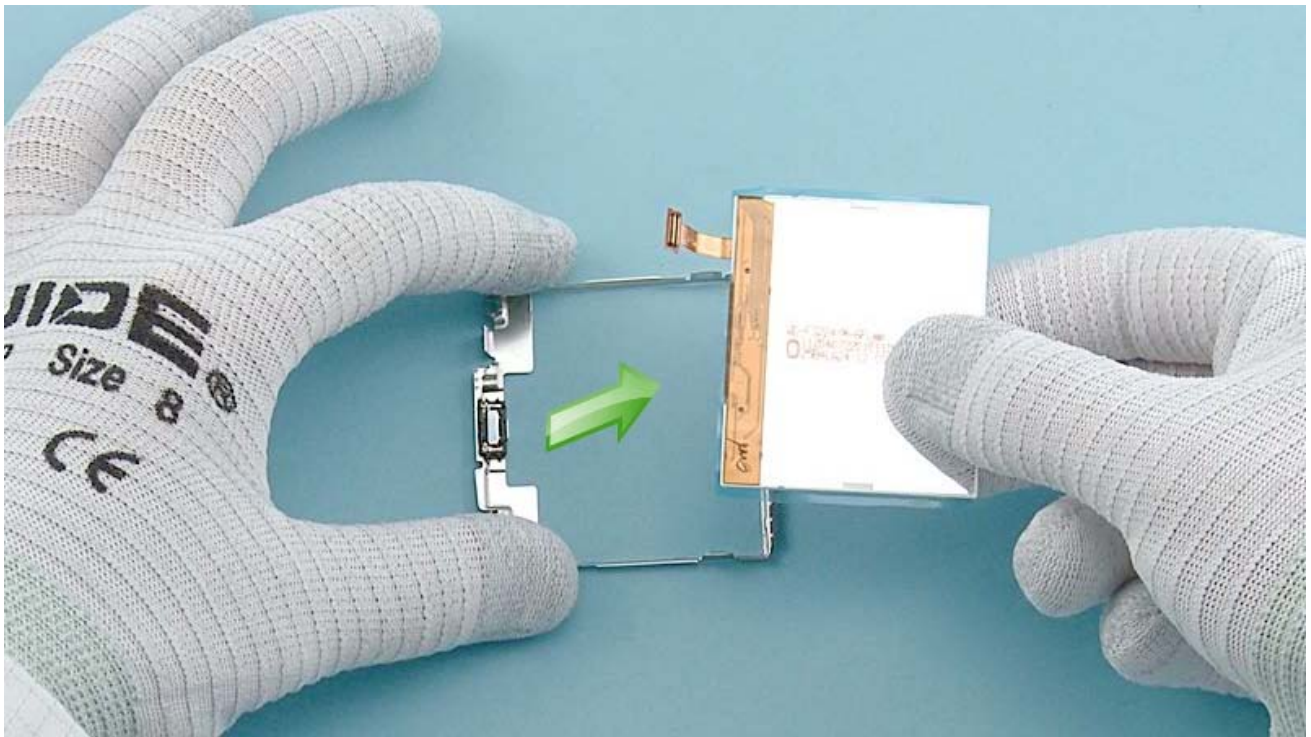
Use the SS-93 to open the three clips holding the UI SHIELDING.



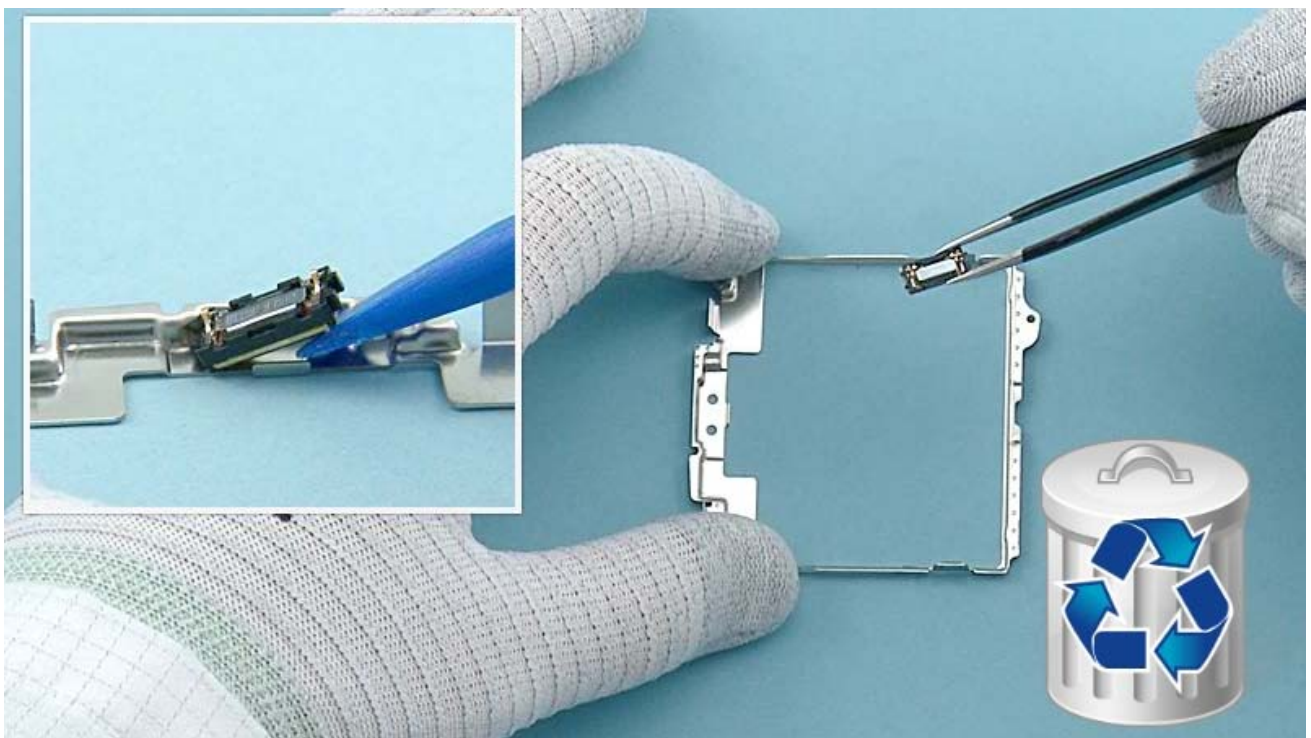
Open the DISPLAY connector. Be careful not to damage the connector or any components nearby.



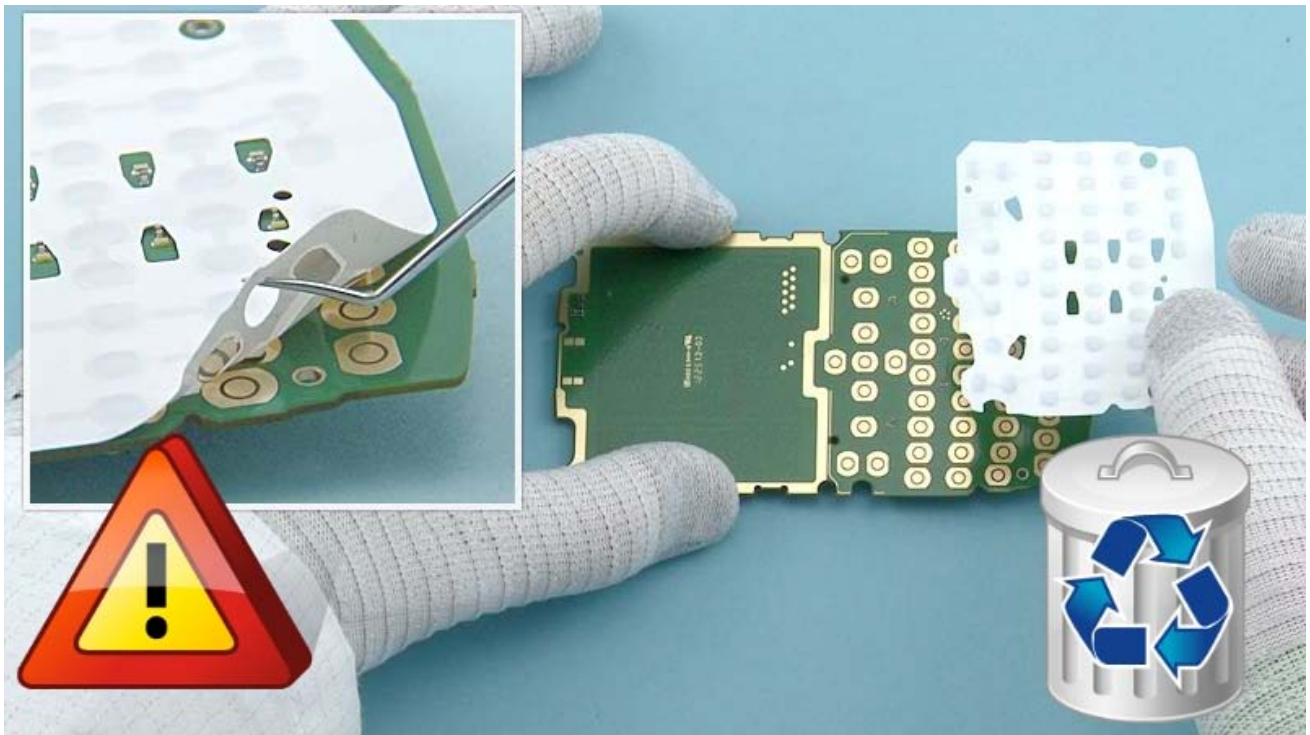
The DISPLAY and the UI SHIELDING can now be separated from the ENGINE BOARD.



Push the DISPLAY out from the UI SHIELDING. Remove the DISPLAY.



Release the EARPIECE with the SS-93. Remove it with tweezers. Do not use it again. Discard it.



Release one corner of the DOMESHEET with the dental tool. Peel it off and remove it. The DOMESHEET is not reusable. Discard it.

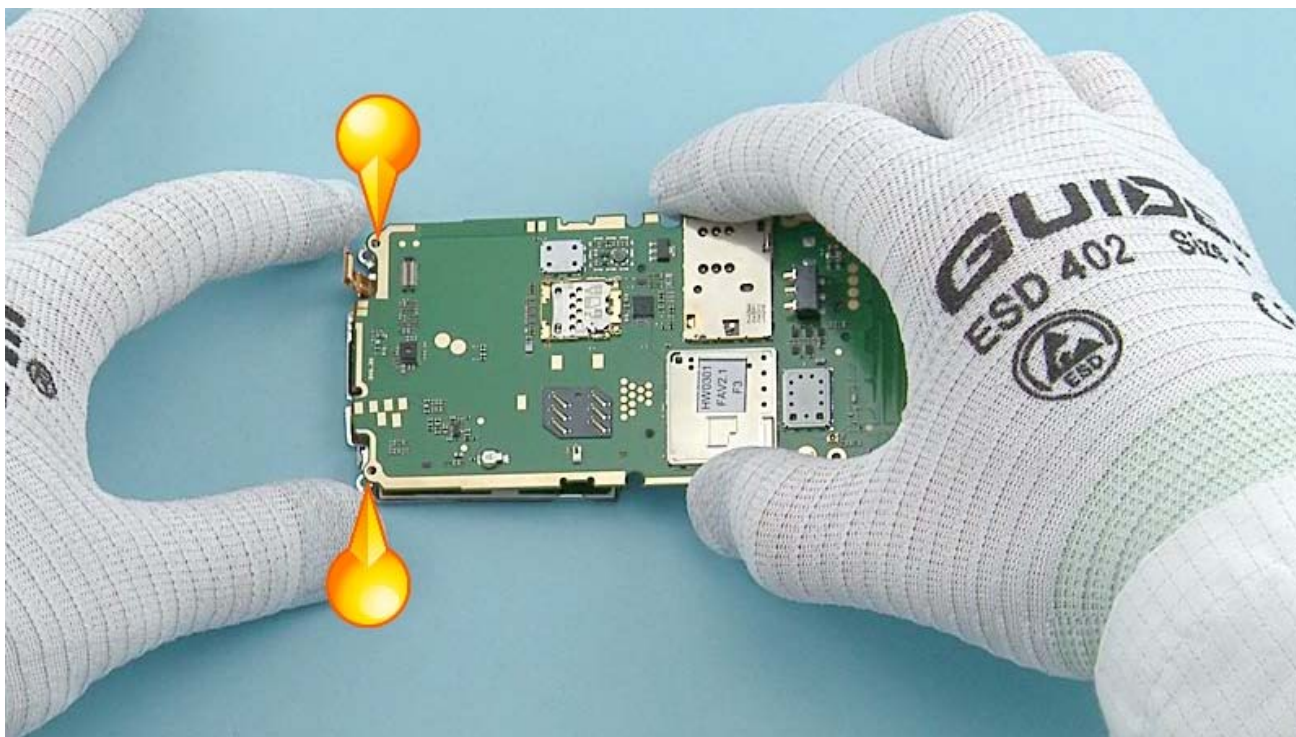


The Nokia Asha 205 Dual SIM / 2050 disassembly procedure is complete.

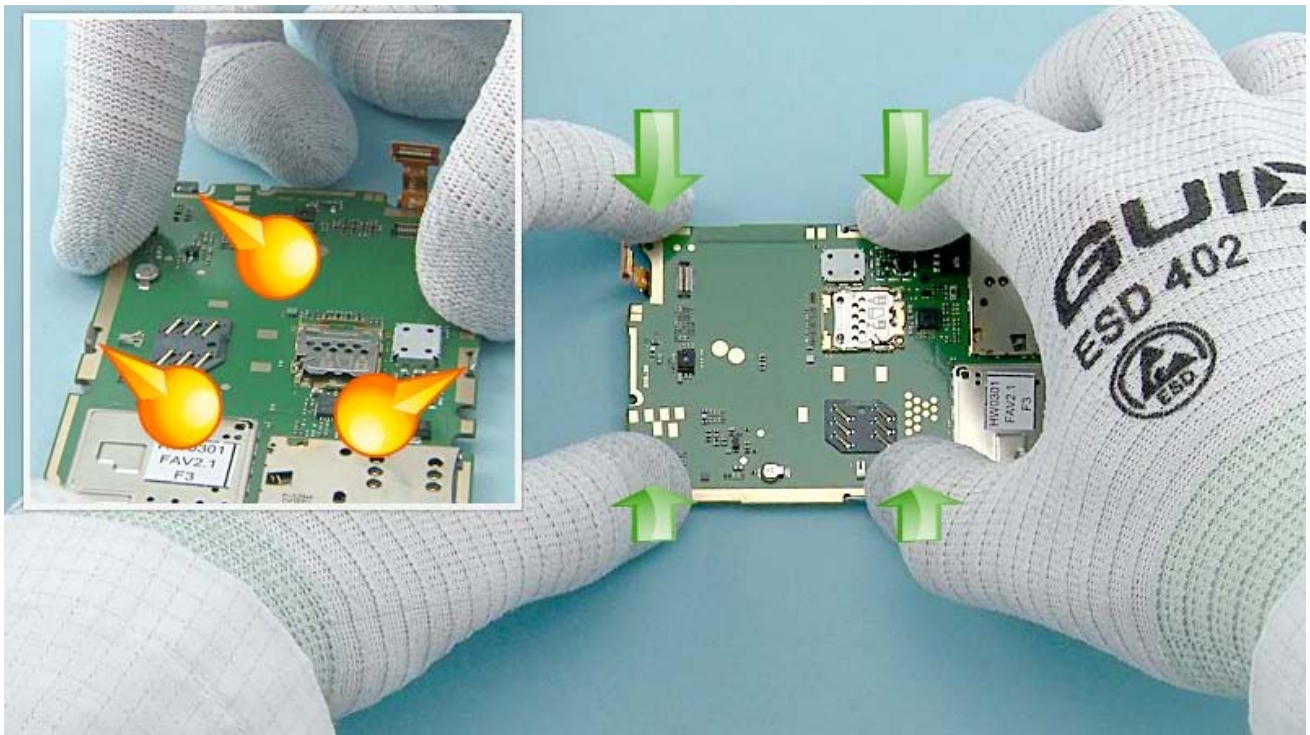
-END OF DISASSEMBLY-



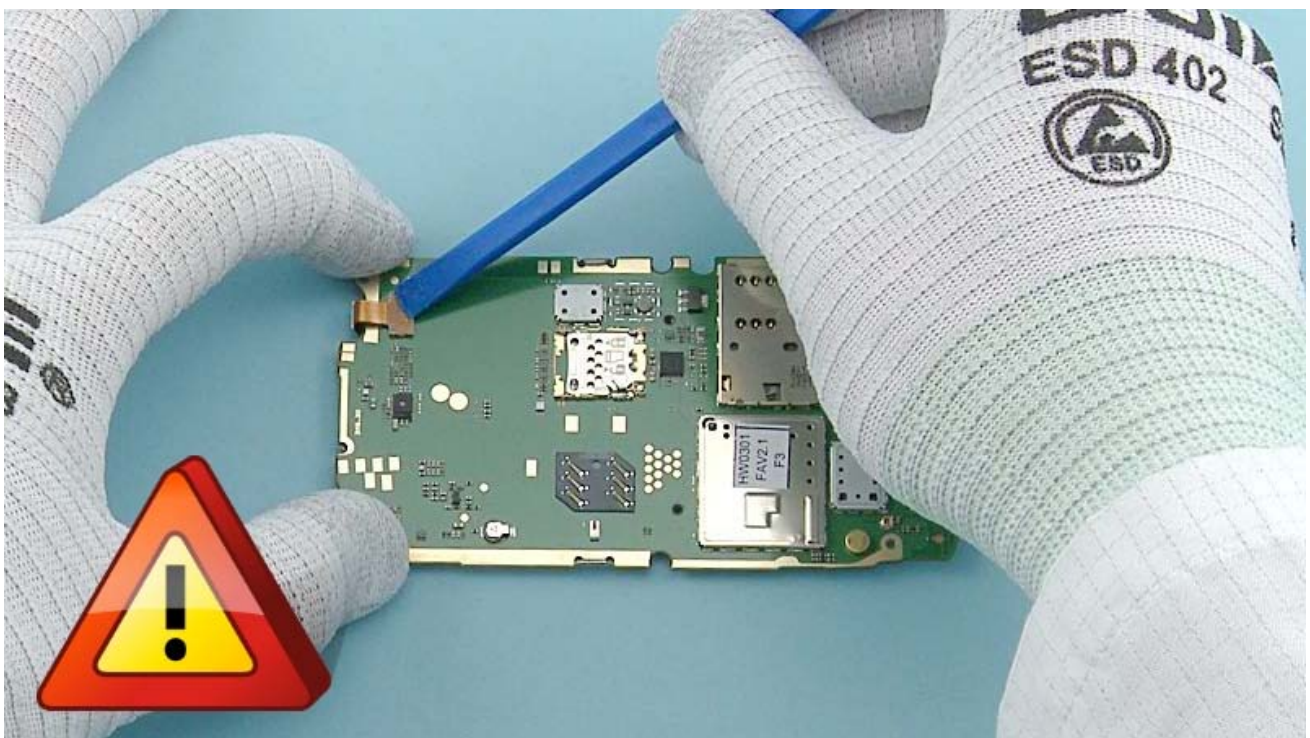
Place the top end of the DISPLAY to the UI SHIELDING first. Gently press the DISPLAY to its place.



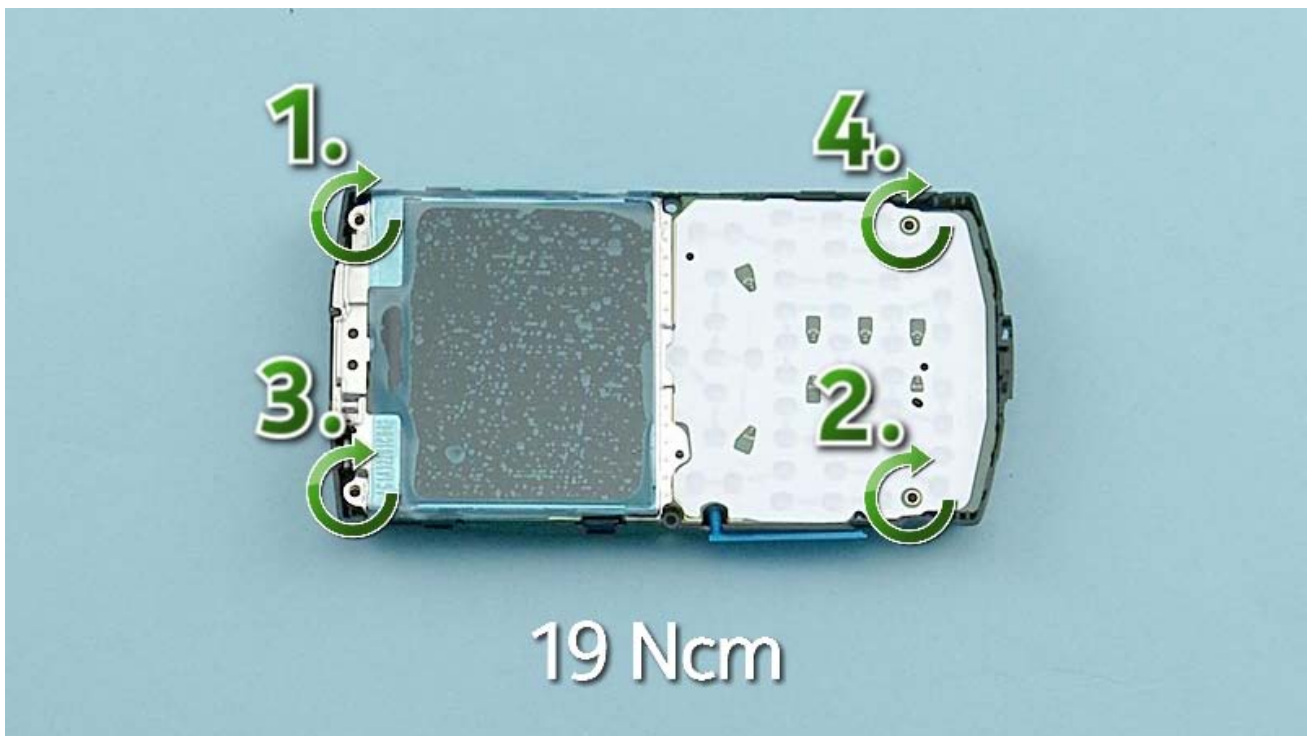
Align the ENGINE BOARD to the UI SHIELDING by using the two shown screw holes.



Press the ENGINE BOARD so that the three shown clips of the UI SHIELDING are attached to the ENGINE BOARD.



Connect the DISPLAY connector with the SS-93. Be careful not to damage the connector or any nearby components.



Fasten the four Torx+ size 6 screws to the torque of 19 Ncm in the order shown.



Fasten the two Torx+ size 6 screws to the torque of 17 Ncm in the order shown.



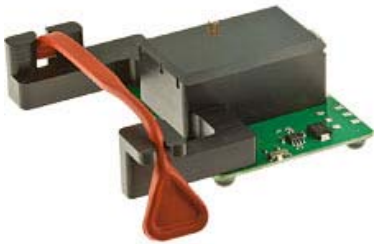
CA-101 Service cable



AC-11 Travel charger
AC-8C & CA-187C for China



BL-5C Battery

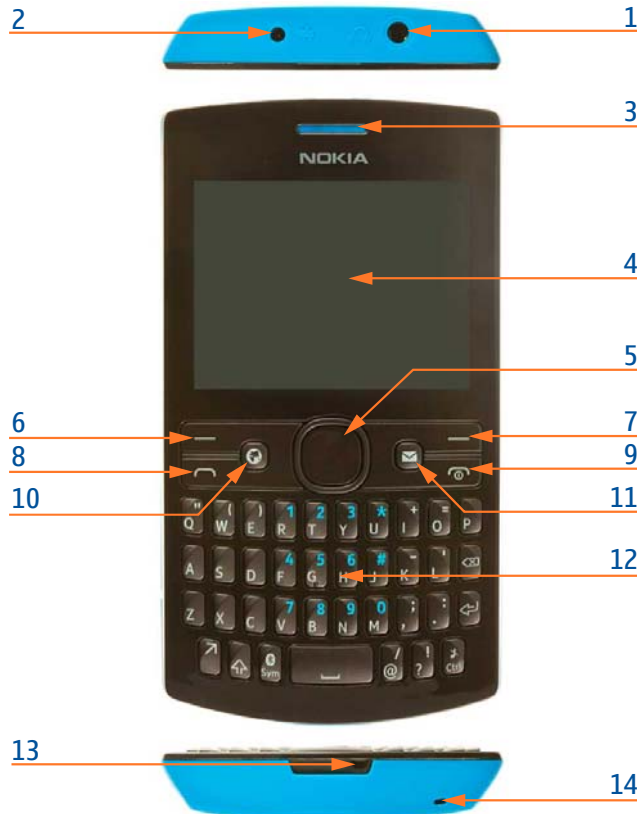


SF-291 Flash Adapter



Nokia Standard Toolkit (v2)

For more information, refer to the Service Bulletin (SB-011) on Nokia Online. Supplier or manufacturer contacts for tool re-order can be found in "Recommended service equipment" document on Nokia Online.

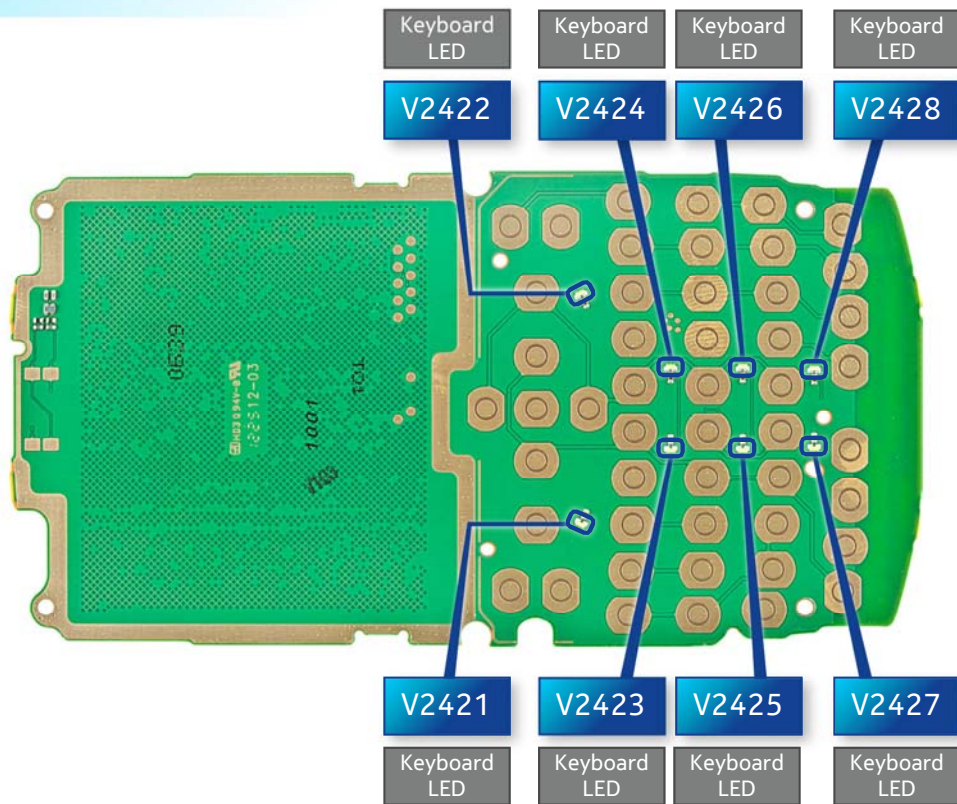


- 1 — Nokia AV 3.5mm connector
- 2 — Charger connector
- 3 — Earpiece
- 4 — Display
- 5 — Navigation key
- 6 — Left selection key
- 7 — Right selection key
- 8 — Call key
- 9 — End/Power key
- 10 — Left shortcut key
- 11 — Right shortcut key
- 12 — Keyboard
- 13 — Strap holder
- 14 — Microphone
- 15 — Camera
- 16 — Loudspeaker
- 17 — SIM card slot (SIM 2)
- 18 — Antenna area

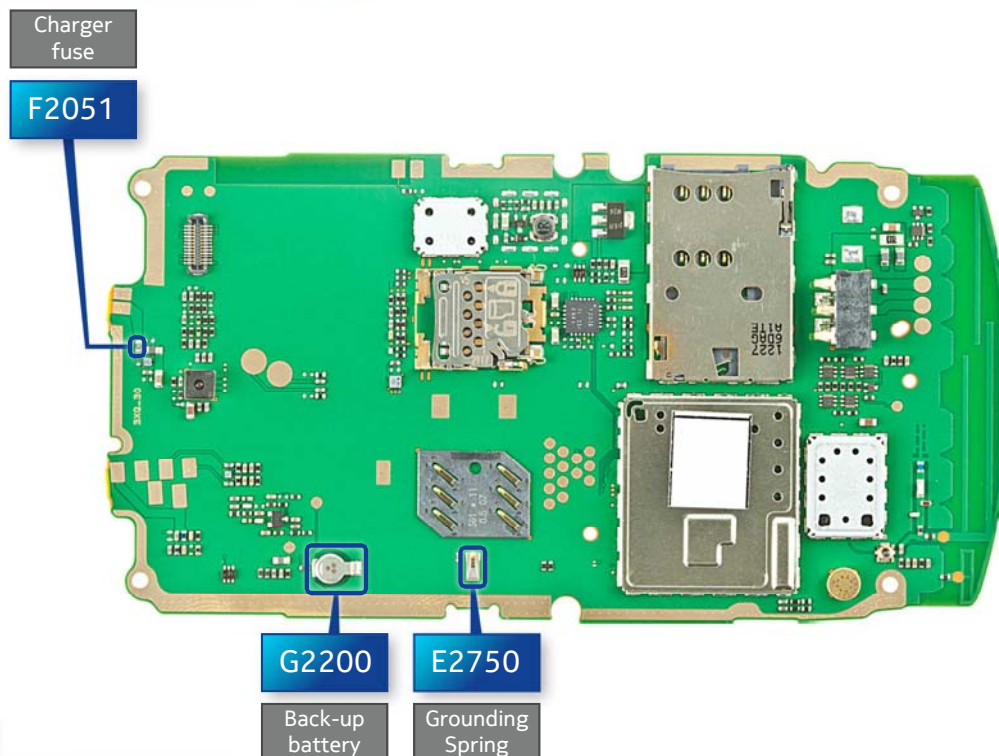
Only in dual SIM (RM-862) variant!



TOP

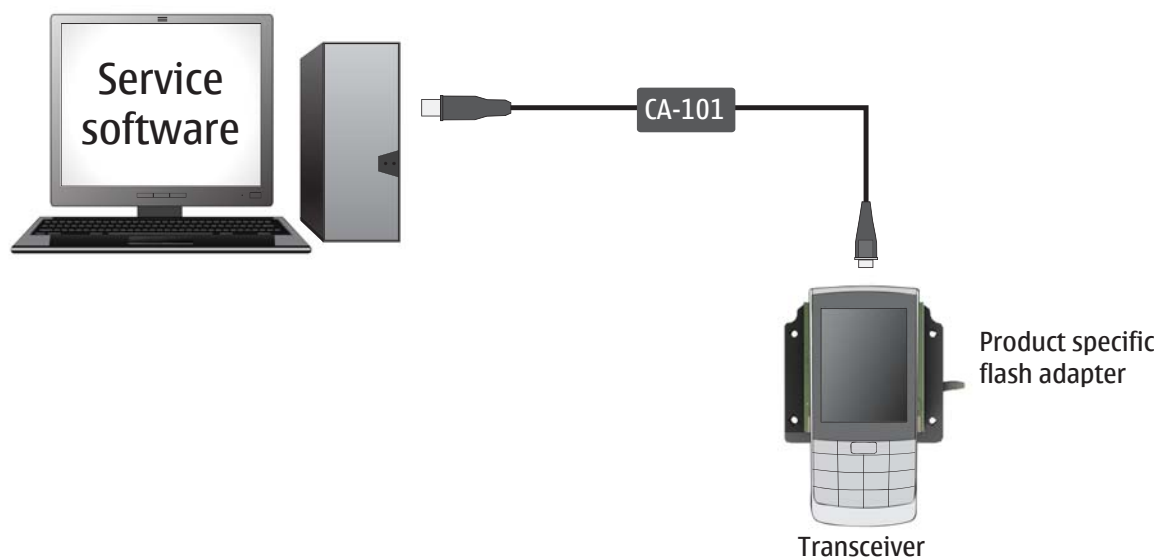


BOTTOM



v1.0

Flashing concept



Version	Date	Description
1.0	27.11.2012	First published version