



SGH-i907

Getting Started Guide



Downloaded from <http://www.gsmarc.com>


Welcome to AT&T

Please use our interactive web tutorial available at

att.com/WirelessTutorials

for most complete and up-to-date information available to setup your device and services. The on-line tutorials include detailed step-by-step instructions and screen shots to assist your learning.

Or use this simple Getting Started Guide to quickly get an overview of the major features and services available with your smartphone.

Open the back flap  of the Getting Started Guide to review diagram of device key locations and functions.

We recommend that you keep this diagram open for reference while working through the guide.

Thanks again for choosing AT&T.



Downloaded from <http://www.gsmarc.com>

Table of Contents

Set up Your i907	6
What's in the Box?	6
Insert the SIM	6
Insert Battery	7
Charge Battery	7
Insert microSD™ Card	7
Get to Know Your i907	8
Check Your Wireless AT&T Connection	9
Status indicators	9
Today Screen	10
Start Menu	10
Using the Touchscreen	11
Using the Stylus	11
Using the Keypad	11
Using the Keyboard	12
Use the Phone	14
Make a Call	14
Answer a Call	14
Set Up Voicemail	14
Check Voicemail	15
Add a Contact	15
Copy Contact from SIM card to the i907	16



Table of Contents

Use Text/Multimedia Messaging & IM	17
Send a Text Message	17
Receive a Text Message	17
Take & Send a Picture	18
Instant Messaging	19
Browse the Web & Shop Online	20
Go to Web Pages	20
Bookmark a Page	20
AT&T Mall	21
Set Up Your Email	22
Choose the Best Email Option for You	22
Personal Email Setup With Xpress Mail	22
Send and Receive Personal Email	25
Set Up Self-Service Corporate Email with Xpress Mail	26
Set Up IT-Managed Corporate Email	26
Personalize Your Device	27
Assign a Ringtone	27
Set up Bluetooth®	28
Set up Bluetooth®	28
Bluetooth® Hands-Free Device	28



Downloaded from <http://www.gsmarc.com>

Table of Contents

Set up AT&T Navigator	29
AT&T Navigator	29
Download and Installation Instructions	29
Login Instructions	30
Generate a Route	30
Exiting AT&T Navigator	30
Listen to Music & Watch Video	31
AT&T Mobile Music	31
Watch CV	32
Transfer Music from a PC	33
Play Music	34
Video Share	35
Make a Call Using Video Share	35
Manage Appointments	37
Schedule an Appointment	37
Wi-Fi	38
About Wi-Fi Networks	38
Turn Wi-Fi On/Off	38
Connect to an Available Wi-Fi Network	38
Tips & Tricks	42



Set up Your i907

What's in the Box?

To get started, we recommend the following:

- Carefully follow the step-by-step instructions in this guide to set up your device.
- Review the User Manual on the Getting Started CD to learn about the full power of the i907.

Take note of the following components included in the box:



i907



Getting Started CD



Standard Battery



Travel Charger



Data Cable



3.5 mm Audio Adaptor

Insert the SIM

1. Remove the battery cover.
2. Remove battery.
3. Slide SIM face up (gold contacts face down) into SIM slot.
4. Replace battery and battery cover.



Set up Your i907

Insert Battery

1. Remove the battery cover.
2. Align the contacts on the battery with the contacts in the back of the device.
3. Push the battery down until it locks into place.
4. Replace the battery cover.



Charge Battery

1. Plug the AC Travel Charger into a standard AC wall outlet.
2. Plug the travel charger into the jack on the top right side of the phone with the green arrow facing up. The indicator light at the top of the device is red while charging, and green when fully charged.

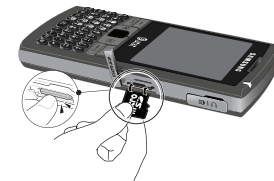


Note: When charging is complete, unplug the charger from the power outlet.

Insert microSD™ Card

A microSD™ Card is a removable memory card that will increase data storage capacity of the device.

1. Remove the cover on the right side of the device, that reads microSD™.
2. Insert the narrow end of the microSD™ Card into the slot, then replace the cover.



Note: microSD™ Card sold separately.

Downloaded from <http://www.gsmarc.com>



Get to Know Your i907

Turn On/Off Your Device

Press and hold the **Power ON/OFF** button located on the left side of the device.

Lock/Unlock Your Device Keypad

To Lock the device, press and hold the **END** key. To unlock the device, press the **LEFT SOFT** key, followed by the * key (or select unlock). If the device is locked, and backlight is off, quick press the **Power ON/OFF** button.

Backlight

In the unlock mode, after 30 seconds the screen will dim to save battery power. It will finally power off after another 30 seconds. To turn your screen on, quick press the **Power ON/OFF** button.

Change Backlight Settings

1. Press the **START** key to enter the **Start** menu, select **Settings**.
2. Select the **System tab**.
3. Select **Backlight**.
4. Change **Turn off backlight if device is not used for** settings.
5. Select **OK** to save your changes and exit.






Power ON/OFF button










Get to Know Your i907

Check Your Wireless AT&T Connection

On the top right corner of the home screen, you will find the network coverage indicator.

-  Full wireless 3G data coverage
-  Full wireless coverage (no data connection)
-  Wireless is turned off

Status indicators

- | | | |
|--|---|--|
|  Battery full |  Bluetooth on |  New Text message |
|  Battery empty |  3G network |  New voice mail |
|  Battery charging |  Signal strength |  Wi-Fi on |



Downloaded from <http://www.gsmarc.com>



Get to Know Your i907

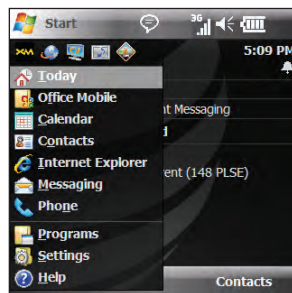
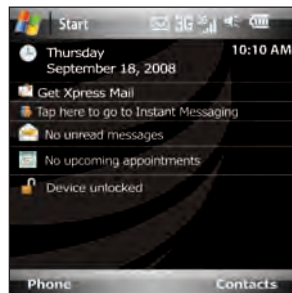
Today Screen

The Today screen displays important information, such as upcoming appointments, status indicators, the current date, time, and profile. You can open a program directly by tapping its associated icon.

Start Menu

There is one main menu used by the i907 called the **Start Menu**.

The Start menu contains links to all the applications and settings information, similar to that of a Windows based PC system. To access the Start menu, simply use the stylus to tap in the upper left corner of the screen on the word **Start** or press the **START** key. A drop down menu is then displayed, and from there, all other applications and settings can be accessed.



Using the Touchscreen

To navigate the screen using your finger, simply tap on-screen selection desired. It's that easy!

Using the Stylus

To navigate the screen with the **Stylus**, simply tap the on-screen selection desired. You can enter text and numbers by using the on-screen keyboard displayed at the bottom of the screen.

1. In a program, tap the keyboard icon at the bottom of the screen.
2. Enter text and numbers by tapping keys on the on-screen keyboard.

Using the Keypad

To move around the screen, use the **NAVIGATION PAD** to control the onscreen mouse pointer to highlight selections. Press the **NAVIGATION PAD** to select. You can also use the **NAVIGATION PAD** in a 4-way navigation mode. Pressing the **FUNCTION** and **N** key when in the homescreen view will switch between these two modes.

To select the bottom left and right items on the screen, use the **LEFT** and **RIGHT SOFT** keys.

For more information visit att.com/WirelessTutorials.



Downloaded from <http://www.gsmarc.com>



Get to Know Your i907

Using the Keyboard

Your i907 is equipped with an innovative keyboard. You can easily and accurately type words with the keypad. When you select a field that requires text or numbers, the phone automatically selects the appropriate input mode. However, if you need to switch between modes, press one of the keys listed in the following illustration. See the indicator at the lower center of the Home Screen to identify the current text mode setting.

Creating Text

To type a single uppercase letter, press **CAPS/SHIFT** key, and then press the corresponding key. To enter all CAPS, press the **CAPS/SHIFT** key twice.

To enter a number or symbol, press the **FUNCTION** key, and then press the corresponding key. To enter all numbers or symbols, press the **FUNCTION** key twice.



Get to Know Your i907

Task Keys

MEdia™ Net - direct access to MEdia™ Net. Short press - you can access MEdia Net. Long press - you can run Voice Command (only if the Voice Command is enabled).

Calendar - direct access to your calendar.

SYMBOL/SPACE - short press activates phone on Today screen. When in text mode short press inserts a space/long press brings up additional symbols.

SILENT - turn ringtone on or off.

CAMERA/ZOOM - short press activates camera/long press enters Zoom mode. For a full description of camera features see page 18.

MAIL - direct access to email and text messaging. See page 17 & 19 for details.



Downloaded from <http://www.gsmarc.com>



Use the Phone

Make a Call Time Required: 2 minutes

1. From the **Today** screen, you can access the Phone screen by pressing the **SEND** key or by directly entering a phone number by pressing the numeric keys on the keypad.
2. Press the **SEND** key.
3. To end the call, press the **END** key.

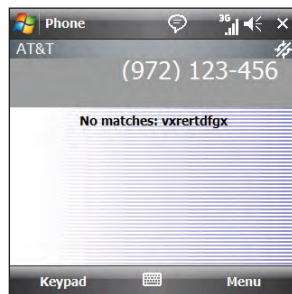
Answer a Call

1. Press the **SEND** key.

Note: To activate speakerphone, press and hold the **SEND** key for 2 seconds. To place a call on hold or unhold, press quickly on the **SEND** key.

Set Up Voicemail Time Required: 2 minutes

1. Press and hold the **1** key on your I907 to connect to the AT&T voicemail system.
2. Follow the voice prompts to create a password and record your name and greeting.



Use the Phone

Check Voicemail Time Required: 1 minutes

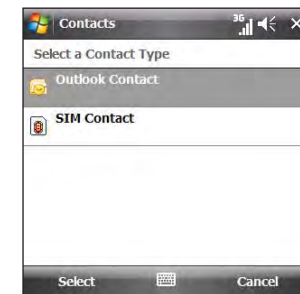
1. Press and hold the **1** key.
2. Follow the voice prompts.

Check Voicemail Messages From Other Phones

1. Dial your 10-digit wireless number.
2. Press the ***** key when you hear your personal greeting.
3. Enter your personal password that you created while setting up your voicemail.

Add a Contact Time Required: 2 minutes

1. On the Today screen, press the **RIGHT SOFT** key to enter the **Contacts** menu.
2. Press the **LEFT SOFT** key to select **New**.
3. To save the information to your SIM card, select **SIM Contact**.
4. Type the contact information.
5. Press the **OK** key.



Downloaded from <http://www.gsmarc.com>

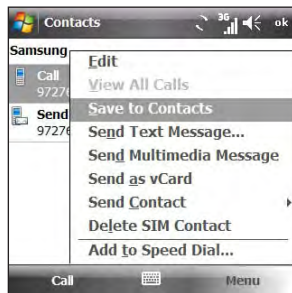


Use the Phone

Copy Contact from SIM card to the i907

Time Required: 1 minute

1. Press the **RIGHT SOFT** key to enter the **Contact** menu.
2. Select the **Contact** you want to save from your list.
3. Select **Menu**.
4. Select **Save to Contacts**.
5. Press the **OK** key.

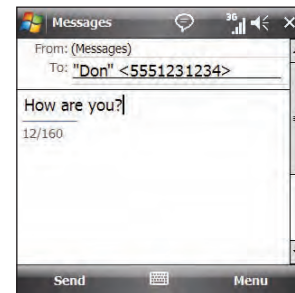


Use Text/Multimedia Messaging & IM

Send a Text Message

Time Required: 2 minutes

1. On the Today screen, press the **START** key to enter the **Start** menu.
2. Select **Messaging**.
3. Select **Messages**.
4. Press the **RIGHT SOFT** key to enter the **Menu**. Select **New**.
5. Choose **Text Message**.
6. In the **To** field, type a phone number, or press the **RIGHT SOFT** key to enter the **Menu**, Select **Add Recipient**.
7. Type a message.
8. Press the **LEFT SOFT** key to select **Send**.



Receive a Text Message

Time Required: 1 minute

1. On the **Today** screen, press the **START** key to select **Start**, select **Messaging** then select **Messages**.
2. Scroll to a message.
3. Select a message.
4. Enter your message then select **Send**.
5. To end a conversation, select **Menu** and then select **Close**.



Downloaded from <http://www.gsmarc.com>



Use Text/Multimedia Messaging & IM

Take & Send a Picture

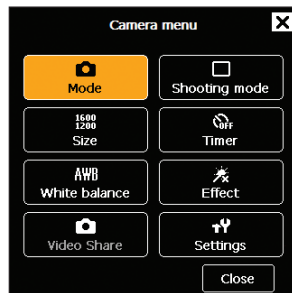
Time Required: 2 minutes

1. Press the **CAMERA** key on the bottom right hand side of the keyboard.
2. Press the **NAVIGATION PAD** to take a picture.
3. After the picture has been taken, press the **RIGHT SOFT** key to enter the **Menu**, and select **Send Multimedia Msg.**
4. In the To field, type a phone number or you can select an entry in your saved contact list.
5. Type a message (optional).

Note: To add or attach an item to the message, press the **RIGHT SOFT** key to enter the **Menu**. Select **Insert** and select the type of item to attach. Choose the desired item from the list.

6. Select **Send.**

Note: Pictures will automatically be saved in the My Stuff Folder.



Use Text/Multimedia Messaging & IM

Instant Messaging

If you subscribe to an instant messaging (IM) service such as Yahoo!®, AOL®, or Windows Live™, you can have the convenience and fun of IM on your i907.

Set Up

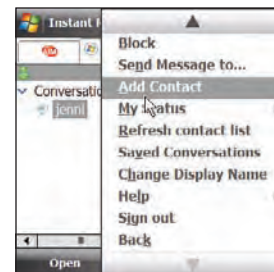
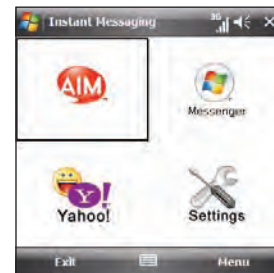
Time Required: 1 minute

1. On the Today screen, press the **START** key to select **Start**, and then select **Programs.**
2. Select **IM & Email.**
3. Select **Instant Messaging.**
4. Highlight your desired IM service and press the **NAVIGATION PAD.**
5. Enter your user name and password and press the **LEFT SOFT** key to select **Sign In.**

Add a Contact

Time Required: 1 minute

1. While signed in, press the **RIGHT SOFT** key to enter the Menu.
2. Select **Add Contact.**
3. Enter contact information.
4. Press the **LEFT SOFT** key to select **Add.**



Downloaded from <http://www.gsmarc.com>



Browse the Web & Shop Online

Go to Web Pages Time Required: 1 minute

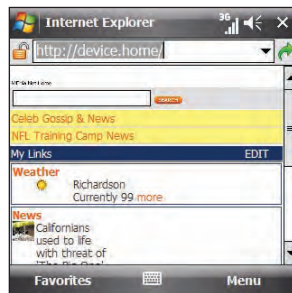
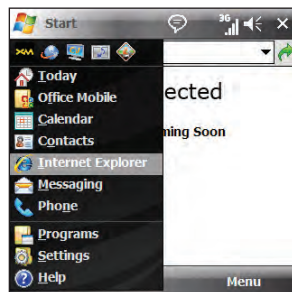
Use Internet Explorer® to access web sites.

1. On the **Today** screen, press the **START** key to enter the **Start** menu.
2. Select **Internet Explorer**®.
3. In the address bar that appears, type the URL (e.g. www.att.com) that you wish to go to.
4. Press the **RETURN** key to download the new web page.

Bookmark a Page

1. From the Today screen, press the **START** key.
2. Select **Internet Explorer**®.
3. Enter the web address into the Address field and select **Go**.
4. Select **Menu** then select **Add to Favorites**.
5. Confirm or change the name and address, then select a folder.
6. Select **Add** to store the bookmark and return to the web page.

Typing Tip: To capitalize a letter, press the **CAPS/SHIFT** key, then press the appropriate key. To insert symbols such as @, _ and /, press the **FUNCTION** key, then press the appropriate letter key.



Browse the Web & Shop Online

AT&T Mall Time Required: 1 minute

Personalize your device with downloadable games, graphics and ring tones.

Shop Applications

- Browse thousands of ring tones in **Shop Tones**.
- Select **Shop Games** to find games that turn your down-time into fun time.
- Personalize your phone with unique art at **Shop Graphics**.
- Go to **Shop Multimedia** to find an MMS greeting card that's perfect for the occasion.
- Subscribe to useful applications and cool tools discovered at **Shop Applications**.

1. On the Today screen, press the **START** key to enter the **Start** menu. Select **Programs**.
2. Select **AT&T Mall**.
3. Select the Mall you wish to enter.

Note: For web browsing, AT&T recommends a data plan. If you do not have a data plan associated with your account, please visit att.com/wireless or call 1-800-331-0500.



Downloaded from <http://www.gsmarc.com>



Set Up Your Email

Choose the Best Email Option for You

You can use your device to access personal or corporate email:

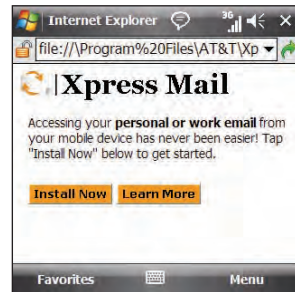
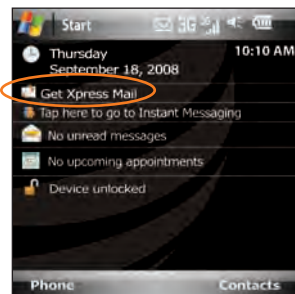
Personal email accounts send email directly from your internet service provider (ISP) like Yahoo!®, AOL® or Hotmail to your Windows® Mobile powered smartphone. To set up a personal email account on your device, you can use **Xpress Mail™**. Xpress Mail offers automated setup and synchronization so that changes and deletions on your device also appear in your ISP email account.

Corporate email accounts like Microsoft® Exchange Server or IBM Lotus Domino, are typically managed by an IT organization. To set up corporate email on your device, you can use **Xpress Mail** for self-service or **Microsoft® Direct Push** or **Good Mobile Messaging** for IT-managed service.

Personal Email Setup With Xpress Mail Time Required: 8 minutes

Xpress Mail automates the setup process, and will work with the majority of email services such as Yahoo!® or AOL®.

1. Select **Get Xpress Mail** on the **Today** screen and press the **NAVIGATION PAD**.
2. Highlight **Install Now** and press the **NAVIGATION PAD**.
3. Highlight **Download Now** and press the **NAVIGATION PAD**. (Download time will vary depending on your service area).

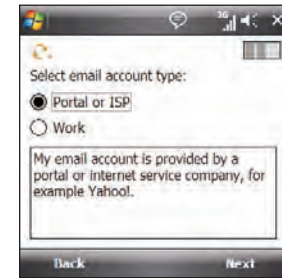
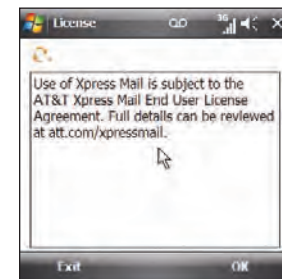


Set Up Your Email

Personal Email Setup With Xpress Mail (continued)

4. Press the **LEFT SOFT** key to select **Yes** to continue the download. Once the download is complete, press **Yes** to reset your device.
5. Press the **RIGHT SOFT** key to accept the license agreement.
6. Confirm your 10-digit mobile (cell) number (numbers only) and select **Next**.
7. Select **Portal** or **ISP** then press the **RIGHT SOFT** key to select **Next**.

Note: Using email on your device requires a data plan. If you do not have a data plan associated with your account, please visit att.com/wireless or call 1-800-331-0500.



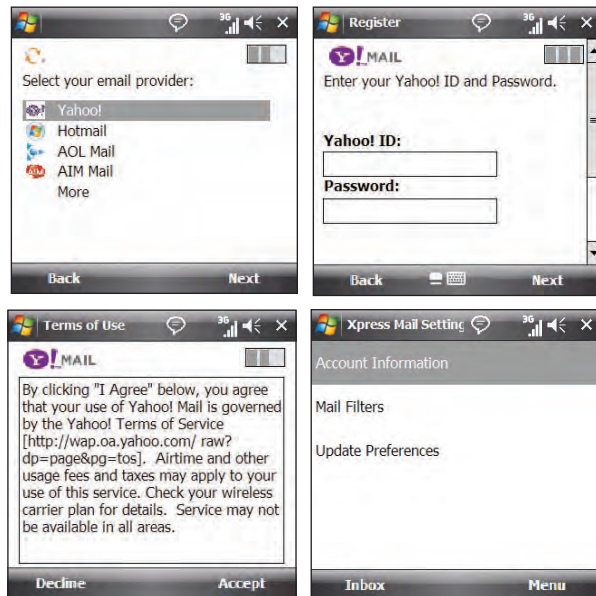
Downloaded from <http://www.gsmarc.com>



Set Up Your Email


Personal Email Setup With Xpress Mail (continued)

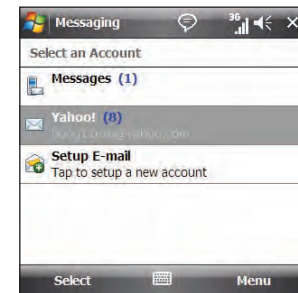
- Choose your provider and press **Next**. (If your provider is not listed highlight **More** then press **Next** to view an additional list of personal email providers.)
- Enter your User Name and Password and press **Next**.
- Accept the license agreement if applicable, by pressing the **RIGHT SOFT** key. Then, press **Register** and wait for the registration process to complete.
- After successfully registering, your i907 will display the Xpress Mail Settings page. Press **Inbox** to go to the Messaging section with your personal email account.



Set Up Your Email

Send and Receive Personal Email Time Required: 6 minutes

- On the **Today** screen press the **START** key to select **Start**, then select **Messaging**, and select **Yahoo** (or your personal email provider), or select the  key.
- Press **Menu** and select **Send/Receive** to synchronize your email.
- Press **Menu** and select **New** to compose a new email.
- When you are finished composing your message select **Send**.



Downloaded from <http://www.gsmarc.com>



Set Up Your Email

Set Up Self-Service Corporate Email with Xpress Mail™

A Corporate email account (like Microsoft® Exchange or Lotus Notes) is an account managed by a company's IT organization. Xpress Mail can provide wireless access to your corporate email from your device without support from IT. Go to xpressmailpe.wireless.att.com to set up self-service corporate email.

Set Up IT-Managed Corporate Email

To set up your IT managed corporate email account, you will need information from your corporate IT organization. Contact your IT administrator about **Microsoft® Direct Push** or **Good Mobile Messaging** support for the Samsung i907.

Microsoft® Direct Push

Microsoft® Direct Push provides wireless access to your corporate email, contacts, calendar and tasks for Microsoft® Exchange Server. Contact your IT administrator for set up instructions. Before you use Microsoft® Direct Push, activate a "PDA Enterprise for Microsoft" data plan on your AT&T account.

Good Mobile Messaging

Visit get.good.com to check availability and support of Good Mobile Messaging for your Samsung i907. You will need a PIN in order to download and install. If you do not have a PIN, check with your IT administrator. Before using Good Mobile Messaging, activate a "PDA Enterprise for Good" data plan on your AT&T account.



Downloaded from <http://www.gsmarc.com>

Personalize Your Device

Assign a Ringtone Time Required: 1 minute

1. On the **Today** screen, press the **START** key to enter the **Start** menu, and then select **Settings**.
2. Select **Sounds & Notifications**.
3. Select **Notifications** tab.
4. Select **Ringtone** menu. Press the **NAVIGATION PAD** to open and select a **Ringtone**.
5. Press the **OK** key to exit.



Set up Bluetooth®

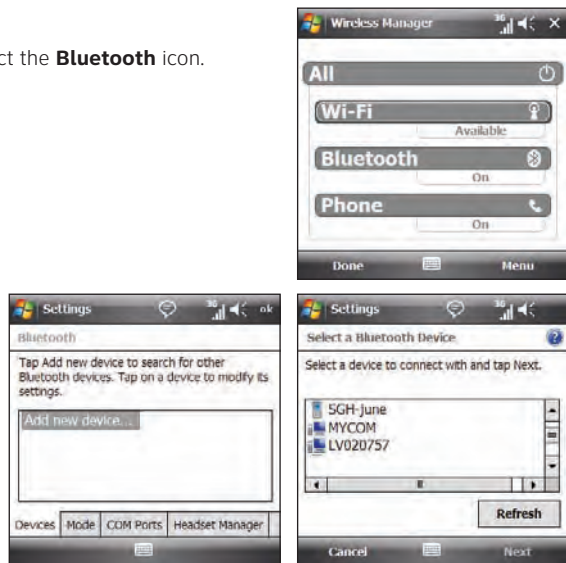
Set up Bluetooth® Time Required: 2 minutes

1. On the **Today** screen with the **Connections** menu open, select the **Bluetooth** icon.
2. Select **Bluetooth** again to turn on Bluetooth.
3. Select **Done**.

Bluetooth® Hands-Free Device

You can use a Bluetooth Hands-free device with your i907.

1. Select **Add new device**.
2. Select the **Bluetooth®** device you wish to add.
3. If required, type the passkey for the Bluetooth® enabled device on your i907.
4. Once the Bluetooth® is paired with the i907, you are ready to use Bluetooth®.



Set up AT&T Navigator

AT&T Navigator

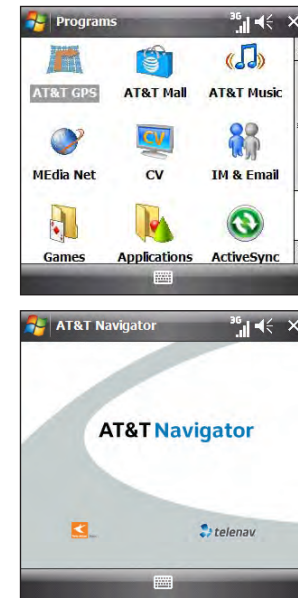
AT&T Navigator helps you get around town by giving you voice-guided, turn-by-turn GPS driving directions and real-time alerts to avoid traffic incidents.

You can access 3D maps and over 10 million business listings to find nearby restaurants, ATMs, hotels and—category or by name—and even find the lowest-priced gas.

Download and Installation Instructions Time Required: 2-5 minutes

1. On the **Today** screen, press the **START** key to enter the **Start** menu. Select **Programs**.
2. Select **AT&T GPS**.
3. Select the **Get AT&T Navigator** icon.
4. Once the Browser has launched, you will be presented with a product overview page for AT&T Navigator. Select the **Download** option.

Optional: If you choose to cancel the download and try again later, press the **CANCEL** button. You will lose any progress up to this point.



Downloaded from <http://www.gsmarc.com>



Set up AT&T Navigator

Login Instructions Time Required: 3 minutes

1. After the download process has completed successfully, locate the **AT&T Navigator** icon in **AT&T GPS** folder and press the **ENTER** key.
2. To complete the login process, you will be prompted to enter your mobile phone number, Name and AT&T Navigator PIN. This PIN will be sent to you via SMS once you activate service. After entering your password, select **Login**.

Generate a Route Time Required: 3 minutes

1. Select the **Drive To** option.
2. Select the **Address** option and choose the **Type it** option.
3. Enter the address for your desired destination and select **Done**. AT&T Navigator will validate the address and generate your route.

Congratulations! You have successfully generated your route.

Exiting AT&T Navigator

To exit AT&T Navigator, back out to the main menu and press the **OK** key to exit.



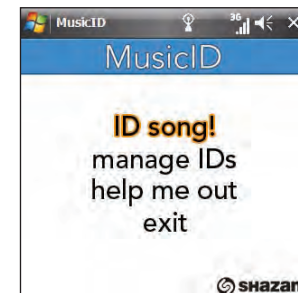
Listen to Music & Watch Video

AT&T Mobile Music

AT&T Music provides the ultimate music experience.

- Transfer and listen to your music with **Windows Media® Player**.
- Purchase tracks from digital music stores.
- Stream dozens of XM music stations with **XM Radio®**.
- Watch the latest music videos by selecting **Music Videos**.
- Personalize with ringtones and Answer Tones under **Shop Music**.
- Instantly ID the title and artist of a song with **MusicID**.
- Get the latest music news, charts and concert info from the **The Buzz**.

Note: The number of files you can store depends on the size and format options of the memory card. A microSD™ memory card is preferable to copy songs to your phone.



Downloaded from <http://www.gsmarc.com>



Listen to Music & Watch Video

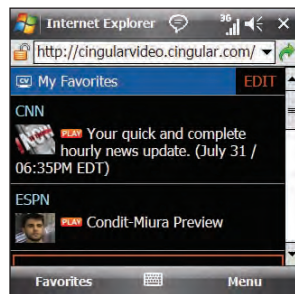
Watch CV

CV brings your phone to life. Watch news, sports, weather and entertainment clips via AT&T's high-speed data network while on the go.

1. On the **Today Screen**, press the **Start key** to enter the Start menu and select **Programs**.
2. Select **CV**.
3. Once connected, select the program options you wish to view and press the **Navigation pad**.
4. Select the clip you want to play and press the **Navigation pad**.

Personalize your CV Content

1. Select **Customize CV** from the CV home screen
2. Select **Edit My Favorites** and press the **Navigation pad**.
3. Select the content you would like to appear on your CV Home screen and press the **Navigation pad**.



Listen to Music & Watch Video

Transfer Music from a PC Time Required: 3 minutes

To transfer music to your device, you will need:

- **Microsoft® ActiveSync®** installed on your PC.
 - Windows Media® Player 10 (or higher) installed on your PC. You can download this at: www.microsoft.com/mediaplayer.
1. Connect your device to your PC.
 2. Close **ActiveSync®** (it will automatically open when you connect your device).
 3. Open **Windows Media® Player** on your PC.
 4. Select **Media Library**, then highlight the music you want to copy.
 5. Right-click on it, then select **Add to Playlist**.
 6. Select **Sync List** (The songs will appear in the Sync List pane on the right).
 7. Select **Start Sync**.



Downloaded from <http://www.gsmarc.com>



Listen to Music & Watch Video

Play Music Time Required: 1 minute

1. On the **Today** screen, press the **START** key to enter the **Start** menu. Select **Programs**.
2. Select **AT&T Music**.
3. Select **1 Windows Media**®.
4. Select **My Music**.
5. Select **All Music**.
6. Select the song you wish to play.



Video Share

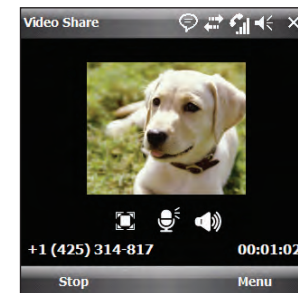
Make a Call Using Video Share

Share events the moment they happen. Video Share lets you stream live video directly to your contacts.

Note: Video Share is a one way video, two way audio connection.

To make a Video Share call: Time Required: 3 minutes

1. Dial, or accept a call from, another 3G Video Share capable device*.
2. Once the call is connected and both sides are ready, each device will display **Video Share Ready**.
3. Press the **RIGHT SOFT** key to enter the Menu then select **Video Share** to initiate the Video Share session. You will be prompted to select either live or a pre-recorded video.
4. Your device will initiate the video on your side and send a request to the connected party to accept the video stream.



Video Share

To accept a Video Share call: Time Required: 1 minute

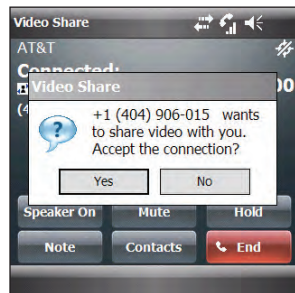
1. When receiving a Video Share request, the name or number of the person initiating the call will appear on the screen with the prompt **...wants to share video with you. Accept the connection?**
2. Select **Yes** and the Video Share session will begin automatically.

To end a Video Share call and continue with the phone call:

1. Press the **Stop** icon and continue talking.

***Note:** Video Share requires an iSim card and is not available in all markets. Both parties must be in a 3G service area – a 3G icon must appear by the signal bars prior to a call being placed, and both parties must remain in the 3G coverage area for the duration of the Video Share session.

2. Save the recording.

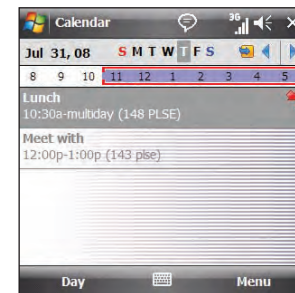


Manage Appointments

Schedule an Appointment Time Required: 2 minutes

1. On the **Today** screen, press the **START** key to enter the **Start** menu.
2. Select **Calendar**.
3. Press the **RIGHT SOFT** key to enter the **Menu**.
4. Select **New Appointment**.
5. Type the appointment information.
6. Press the **OK** key to save.

Note: To change the calendar views, press the **LEFT SOFT** key.



Downloaded from <http://www.gsmarc.com>



Wi-Fi

About Wi-Fi Networks

With Wi-Fi capability, you can access and browse the internet on private or public Wi-Fi networks.

Turn Wi-Fi On/Off

Time Required: 2 minutes

1. On the **Today** Screen, press the **START** key and select **Settings** and choose the **Connections** Tab.
2. Select **Wireless Manager**.
3. Select **Wi-Fi** and then **Done**.

Connect to an Available Wi-Fi Network

Time Required: 2 minutes

1. On the **Today** screen with the Connections menu open, highlight the **Wi-Fi** icon and press the **NAVIGATION PAD** to select.
2. If Wi-Fi is off, Highlight **Wi-Fi** and press the **NAVIGATION PAD** to turn on.
3. Press **RIGHT SOFT** key to enter **Menu**.
4. Select **Wi-Fi Settings**.
5. Select network name. Select **Connect**.
6. Select **Next**. Select **Next** again. Select **Finish**.
7. For password protected network, follow on screen instructions.

SAMSUNG

Downloaded from <http://www.gsmarc.com>



Copyright © 2008 Samsung Telecommunications America LLC. Samsung is a registered trademark of Samsung Electronics America, Inc. and its related entities. Appearance of phone may vary. Screen images simulated.

Microsoft, Windows Logo, Windows Mobile, Windows Media, ActiveSync and Outlook are either registered trademarks or trademarks of Microsoft Corporation in the United States and/or other countries.

© 2008 AT&T Intellectual Property. All rights reserved. AT&T, AT&T logo and all other marks contained herein are trademarks of AT&T Intellectual Property and/or AT&T affiliated companies.

WARNING: This product contains small parts. Keep your mobile phone and any small parts out of small children's reach.

To take advantage of all the benefits and service features, you may need to purchase additional hardware or software, pay monthly access and/or per use charges. This device contains a Lithium Ion Battery. Do not dispose of as household waste.

This carton is made from partially recycled paper fibers and is recyclable when local recycling programs are in place.





Downloaded from <http://www.gsmarc.com>



Tips & Tricks

Phone

TO:	DO:
Turn the speakerphone on and off during a call	Select Menu , then select Turn Speakerphone On or Turn Speakerphone Off
Change volume during a call	Press the volume button on the left side of the phone.
Any Button Wake-up	Select Start , then Settings . Select Wake up Button and choose Any button .
Change phone service settings	Select Start , then select Settings . Select Phone and select the desired phone services.
Use the phone while out of the country	Contact AT&T to enable international voice and data roaming.

Browser

TO:	DO:
View a page in full-screen mode	On a web page, select Menu , then select View , then choose Full Screen .
Change the size of the text on web pages	On a web page, select Menu , then select View , choose Zoom Level then select the size you want.

Navigating the Screen

TO:	DO:
Control the mouse pointer	Slide thumb or finger across the NAVIGATION PAD up, down, left or right.
Launch a program or select an item	Press the NAVIGATION PAD .
Scroll up/down/left/right on the screen	Slide thumb or finger across the NAVIGATION PAD up, down, left or right.

Tips & Tricks

Typing

TO:	DO:
Insert a period	Press the PERIOD key
Insert a space	Press the SPACE key.
Start a new line	Press the ENTER key.
Delete letter(s)	Press the DELETE key.
Capitalize a letter	Press the CAPS/SHIFT key. Double-click the CAPS/SHIFT key to lock capital letters.
Insert symbol	Press and hold the SYM/SPACE key
Insert number	Press the FUNCTION key Double-click the FUNCTION key to lock number key

Function Keys

The following keys when pressed at the same time, while on the Home Screen, will take you to the associated entry.

TO:	DO:	TO:	DO:
Turn Bluetooth® On/Off	FN + B	Launch MEdia™ Net	FN + W
Launch AT&T Mail	FN + C	Launch Cellular Video	FN + V
Launch Headset Manager	FN + H	Mouse On/Off	FN + N
Launch AT&T Music	FN + M		

SGH i907



Downloaded from <http://www.gsmarc.com>





Downloaded from <http://www.gsmarc.com>



Find More Information

On the Web

- Interactive web tutorials, tips & tricks and FAQs are available at att.com/WirelessTutorials. Select **Manufacturer: Samsung** and **Model: SGH-i907** from the drop down menus.
- Detailed support information including device specifications, user manual, troubleshooting, user forums and knowledgebase articles are available at att.com/DeviceSupport.
- For information about your wireless account, service plan or network, visit att.com/Wireless.

Phone Support Help

Call AT&T Customer Care at **1-800-331-0500** or **dial 611** from any AT&T mobile phone for assistance with your service or device.

On your computer

To view the user manual for your device, insert the Getting Started CD into your computer and open the guide file.

Find Accessories

Accessories for your smartphone are available at att.com/WirelessAccessories or visit your local AT&T store.