

---

# **INTEX**

**Aqua Flash**

**GSM/WCDMA Mobile Phone**

**User Guide**

---

**Dear INTEX customer:**

Congratulations on becoming a proud owner of INTEX product. You have now joined the fraternity of millions of satisfied INTEX customers spread across the globe. Intex Technologies is one of the fastest growing IT Hardware, Mobile Phones and Electronics Company. A well established brand, INTEX has kept pace with the technology needs of millions of IT hardware & electronics consumers and has been serving them with more than 300 user friendly, high quality, state-of-the art yet simple products/solutions. The products have been in the market since 1996 and conform to global standards.

Brand INTEX covers a wide range of computer peripherals and accessories such as Computer Multimedia speakers, Cabinets, Keyboards, Mouse, UPS, Add-on cards, Webcams, Headphones, Laptop bags, etc. As a part of its diversification strategy, Intex also offers an interesting range of PCs, TFT-LCD Monitors, Consumer Electronics (DVD Players), Home UPS & Mobile Phones.

Every INTEX product goes through a rigorous process of sample evaluation and approval before commercial launch. Customers look upon the brand as a value-for-money & feature-rich offering, supported by efficient after sales service.

We look forward to your patronage.

It would be our pleasure to receive feedback and suggestions you may have for improvements in the product(s) you are using. **Intex Technologies (I) Ltd**

info@intextechnologies.com [www.intextechnologies.com](http://www.intextechnologies.com)

---

**Helpline No.** 1800-103- 8822 (India)

Intex Way Gulf LLC; service@intexuae.com;  
www.intexuae.com

**Toll Free No.** 800-468- 39823 (Dubai); **Tel:** 00971 04  
3931991

### **SAFETY TIPS**

- Use of wireless hands-free system (headphone, headset) with a low power Bluetooth emitter.
- Make sure the cell phone has a low SAR.
- Keep your calls short or send a text message (SMS) (instead. This advice applies especially to children, adolescents and pregnant women.
- Use cell phone when the signal quality is good.
- People having active medical implants should preferably keep the cell phone at least 15 cm away from the implant.

---

# CONTENT

---

Safety Precaution .....	5
Welcome .....	7
Get Started .....	8
Insert SIM card .....	8
Insert Memory card.....	8
Charge the Battery or Connect to a Computer .....	9
Keys and Parts .....	10
Lock and Unlock the Screen.....	11
Make it yours.....	12
Add Widgets and more icons to Home Screen .....	13
Adding widgets and icons to home screen.....	13
Rearranging or removing widgets and icons on your Home screen .....	13
Enter Launcher .....	14
Open and Switch Applications.....	14
Switch to Recently Used Application.....	14
Make a Call .....	15
Call Log .....	16
Reject a Call by Sending a Busy Message.....	17
Add a Contact .....	18
Send and Receive Message(s).....	19
Browse the Web .....	22
Enjoy Music .....	23
Play store.....	24
Manage Applications/ Move to SD card .....	25
Maintenance and Safety .....	26
Technical Information.....	27

---

## SAFETY PRECAUTION

---

For your safety and proper use of the mobile phone, please read the following guidelines carefully:

- Do not switch the mobile phone on when close to chemical factory, gas station or other explosive objects.
- While driving, please use headset for safety purposes, unless otherwise in emergency, always stop the car on roadside to have a call conversation.
- Because the use of the mobile phone can cause interference in the aircraft, never use the mobile phone in an aircraft. The use of the mobile phone is dangerous and illegal; do switch off the mobile phone before boarding.
- Pay special attention to the use of the mobile phone near heart pacemaker, deaf-aid and some other medical equipment, because the mobile phone can cause interference with them.
- Non genuine accessories will harm your device and could result in warranty cancellation.
- Do not dismantle the mobile phone without permission. In case of failure, please contact the supplier as soon as possible.
- Do not plug the charger into the mobile phone and charge without battery. Always power off the mobile phone when taking out the battery; otherwise the memory of the phone may be damaged.
- When charging the mobile phone, always keep it in the place with good ventilation, heat sink and away from flammable and explosive objects.

---

■ In order to avoid demagnetization, always keep the mobile phone away from magnetic objects such as CD, credit card etc.

■ Ensure the mobile phone not to contact any liquid; once such case occurs, remove the battery and contact the supplier immediately.

■ Do not use the mobile phone in the environment with too high or too low temperature, never expose the mobile phone under strong sunshine or too wet environment. The suitable temperature for the phone and accessories is 0°C-40°C. The height to use the phone shall be less than 2,000m.

■ Do not use liquid or wet cloth with a strong cleanser to clean the mobile phone.

■ This mobile phone has video shooting and audio recording functions, which shall be used as per the related laws and regulations.

■ Always keep the mobile phone out of children's reach. Do not throw or vibrate the mobile phone because violent treatment to the mobile phone may damage the inner circuits and precise structures.

■ Please do not discard the waste battery into general household garbage. Please deal with the waste battery according to the provisions.

*Intex will not bear any responsibility for any incompliance with the above guidelines or improper use of the mobile phone. Company keeps the right to make modifications to any of the content here in this user guide without public announcement in advance. The content of this manual*

---

*may vary from the actual content displayed on a mobile phone. In such case, the latter shall govern.*

## WELCOME

---

Congratulations on becoming the proud owner of the INTEX Aqua Flash Android mobile phone. You have now joined the millions of satisfied INTEX customers spread across the Globe. Your Aqua Flash device offers you these exciting features and much more:

- ✚ Android 4.0 Operating System
- ✚ Dimensions (H×W×D): 130 x 69 x 10.8mm
- ✚ Weight:119g/157g(with battery)
- ✚ Back Camera: 8.0 M
- ✚ Travel Charger AC Adaptor: 500 mAh
- ✚ GSM/WCDMA band: 900MHz 1800MHz, 2100MHz
- ✚ Motion Sensor, Proximity Sensor and light sensor
- ✚ Lithium battery
- ✚ Rated capacity: 3.7V 1800 mAh
- ✚ Continuous standby duration: (Relates to network status) 240.5hours
- ✚ Continuous conversation duration: (Relates to network status) 980 min

Please refer to their labels for other data related to the battery and the charger.

---

## GET STARTED

---

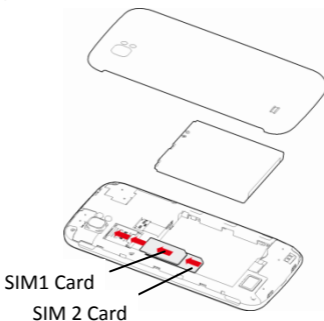
### INSERT SIM CARD

---

The phone is a Dual SIM mobile phone allowing you to use the facility of two networks.

To insert SIM card(s):

1. Switch off the mobile phone and remove the rear cover and battery.
2. Insert the SIM card correctly in the card slot(s) (See figure below)



3. Finally insert the battery and replace the rear cover of the mobile phone.

---

### INSERT MEMORY CARD

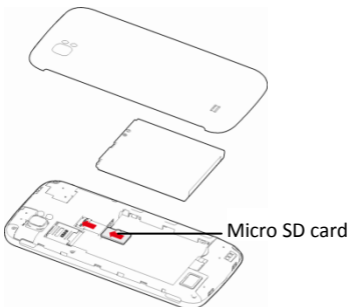
---

1. Power off the mobile phone and remove the rear cover and battery.
2. Insert the Micro SD card into the slot.

---

3. Finally insert the battery and the rear cover of the mobile phone.

Note: Use only compatible memory cards for use with this device. Incompatible memory cards may damage the card or the device and corrupt the data stored in the card.



## CHARGE THE BATTERY OR CONNECT TO A COMPUTER

---

You can charge your battery using the charger or connect the USB cable (supplied with this phone) to the computer.

Note: Please use the specific battery, otherwise it may cause explosion.



---

## KEYS AND PARTS

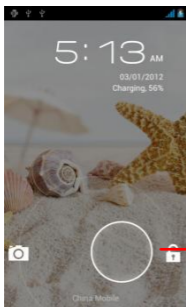
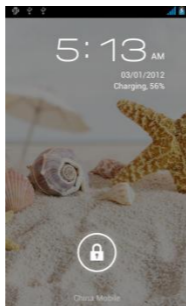
---

The smart phone supports 3G Card and gives you marvelous feelings to experience on Camera, Video recorder, FM radio, Music and Sound recorder. Let you install various APPs, games, and more (supports APK format) by downloading from Android Market.



## LOCK AND UNLOCK THE SCREEN

Press power button to enter Sleep mode and meanwhile the screen will be locked; press power button again to wake up and then drag the lock to the right side to unlock.

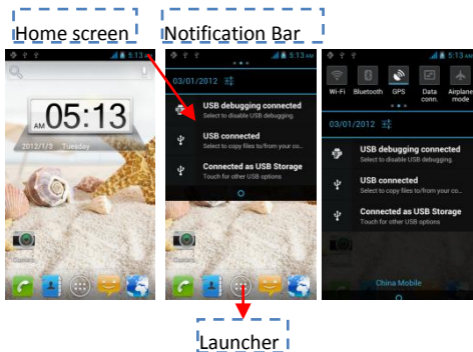


## MAKE IT YOURS

1) Home screen: It is your starting point to access all the features on your phone. It displays application icons, widgets, shortcuts, and other features.

2) Notification Bar: At the top of the screen, the Status bar displays the time, status, and notifications. If there is a new message, missed call or something in the notification bar, you can drag it down to open notification panel and click the desired one to have a view. When you finished, you can close it by dragging the panel up or pressing “Back”.

3) Launcher: Touch the Launcher icon at the bottom of the screen to view all installed applications.



---

## ADD WIDGETS AND MORE ICONS TO HOME SCREEN

---

### ADDING WIDGETS AND ICONS TO HOME SCREEN

---

Enter Launcher and long press and hold an application till the screen vibrates, and then release your finger hold.

### REARRANGING OR REMOVING WIDGETS AND ICONS ON YOUR HOME SCREEN

---

- a. Long press and hold the widget or icon you want to move. Once the phone vibrates, don't release your hold on the icon. Drag the widget or icon to a new location on the screen.
- b. Press and hold on an icon till the phone vibrates, and drag the widgets or icon to remove!



---

# ENTER LAUNCHER

---

## OPEN AND SWITCH APPLICATIONS

---

The Launcher holds icons for all of the applications on your phone, including any application that you downloaded from Android Market or other sources. On the Home screen, touch the Launcher Icon to open the main menu.



Slide the Launcher left or right to bring more icons into view.

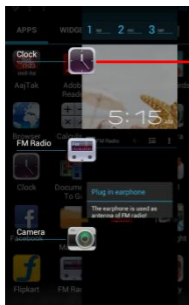
Touch an application to open it.

Press Home icon or Back icon to close the Launcher.

## SWITCH TO RECENTLY USED APPLICATION


---

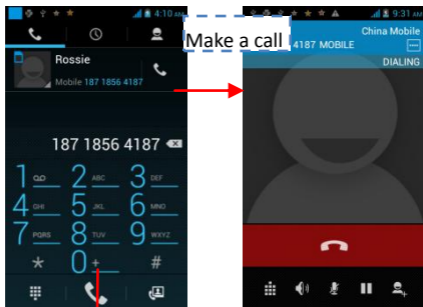
Press and hold the  icon for a few seconds.



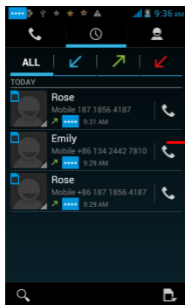
Touch to open the application

## MAKE A CALL

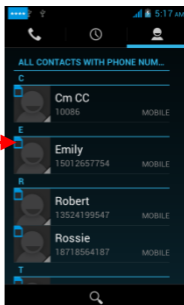
On the start screen choose  and enter a complete phone number to make a call.



Slide the screen to right



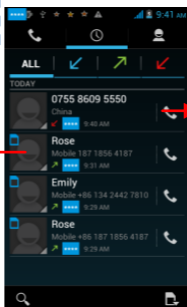
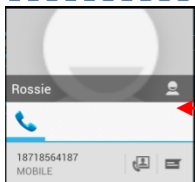
Slide the screen to right



## CALL LOG

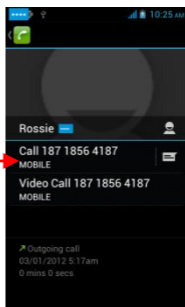
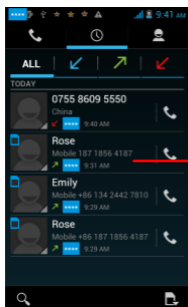
In call log options, you can Make a call, add new contact and send message etc.

Short press this place to make a call or send message(s).




Touch the icon to Dial out.

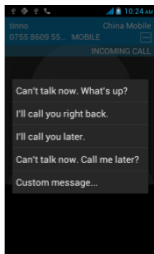
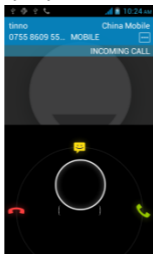
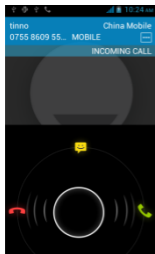
Short press the specified space on the screen in the call log interface, you can view the contacts information in detail. And also you can add the strange number to your Phonebook etc.




## REJECT A CALL BY SENDING A BUSY MESSAGE


While there is an incoming call, you are inconvenient to accept the call, and then you can send a busy message for rejecting the call.

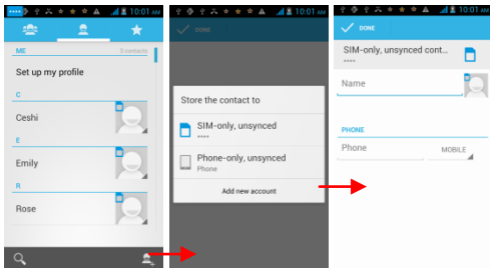
Drag the circle up to , some busy messages will show on the screen, short tap any of them to send out.



## ADD A CONTACT

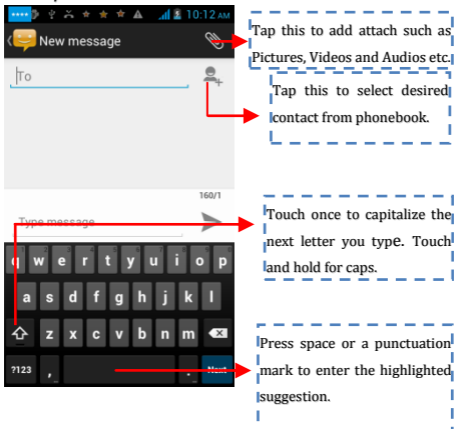
Tap  and enter Contacts and then add a contact (see figure below.)

Tap  to add a new contact to Phone or SIM card.



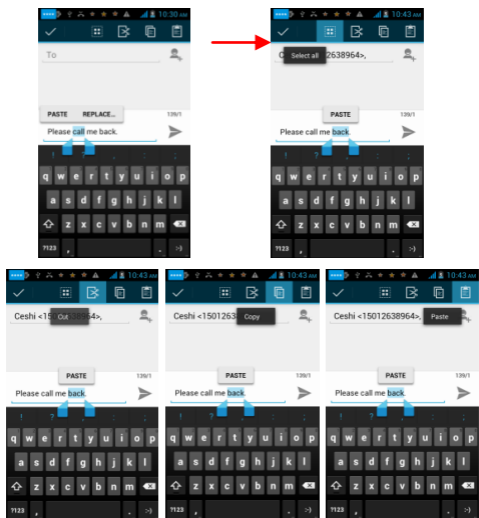
## SEND AND RECEIVE MESSAGE(S)

Enter **Messaging**, and then compose new message. You touch a text field where you want to enter text, to open the keyboard.



a. When you are composing a new text message, you can select text for cutting or copying. The selected text is highlighted in blue.

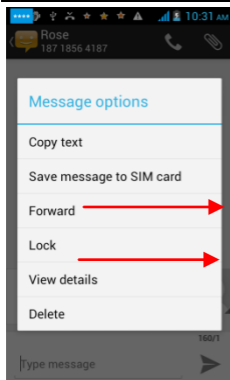
- Touch the text field or portion that contains text. (see the below figure)



You can select all contexts, copy, cut and paste.

b. When a new message comes, you can read by dragging notification panel and click the message, or entering **Message** to read it directly.

1. Long press one of the all message thread, and then you can delete the message thread.
2. Touch and hold a message in a message conversation window.



Tap to forward the message.

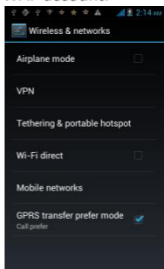
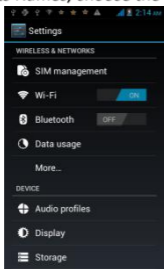
Touch to lock the message.

3. Touch **Forward** in the menu that opens.
4. Add a contact.
5. Touch Send icon to send the message.

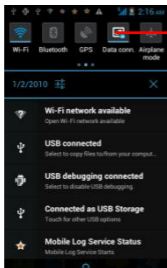
## BROWSE THE WEB

### a. Set up Internet/Data connection

Enter Settings > Wireless & networks> More, scroll down to find out Mobile network, and then enter “Access Points Names, choose the desired WAP account.



### b. Switch on Data connection or WiFi

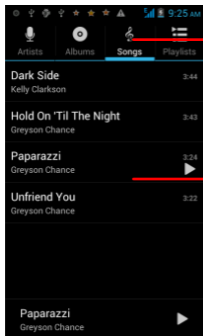


Touch it to switch on or off Data connection

To browse the web, you need switch on Data connection. If there is WiFi around, you can switch on WiFi to use it browse the web. Some may need password.

## ENJOY MUSIC

When you copy music to your SD card, the Music player searches the card for music files and builds a catalog of your music, based on information about each file that is stored in the file itself.

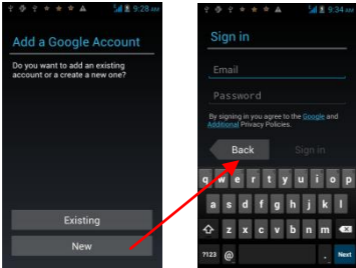


Touch a tab to view your library in one of four ways.

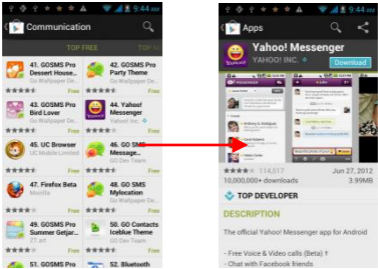
Touch to open the album, songs or playlist.

# PLAY STORE

## a. Add a Google account



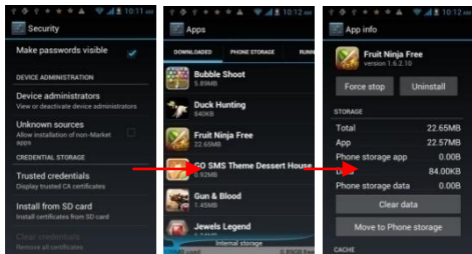
## b. Enter Android Market (Play Store) and download apps.



## MANAGE APPLICATIONS/ MOVE TO SD CARD

Enter Setting >Apps, then manage the applications.

As you install downloaded Apps, you need switch on “Unknown sources” in Security settings.



---

## MAINTENANCE AND SAFETY

---

Please read and observe the following information for safe and proper use of your phone and to prevent damage. Also, keep the user guide in an accessible place at all the times after reading it.

### **1. After sales service**

Kindly refer to the Warranty Card provided in the sales package box.

### **2. Charger and Adapter Safety**

Charger and adapter are designed for indoor use only.

### **3. Battery Information and Care**

- Please use the specific battery, otherwise it will cause explosion.
- Please dispose of your battery properly.
- Do not disassemble or short-circuit the battery.
- Keep the battery's metal contacts clean.
- Recharge the battery after long periods of non-use to maximize battery life.
- Battery life will vary due to usage patterns and environmental conditions.
- The self-protection function of the battery cuts the power of the phone when its operation is in an abnormal status. In this case, remove the battery from the phone, reinsert it, and turn the phone on.

---

## TECHNICAL INFORMATION

---

Weight: 157gram (with battery)

Size Length: 130mm ×Width: 69mm ×Depth: 10.8mm

Battery: 1800mAh

Networks: 900MHz/1800MHz

SAR Value: 0.683W/kg –GSM 900MHz; 0.227 W/kg–DCS  
1800MHz; 0.204 W/kg–WCDMA 2100MHz

Model: Aqua Flash

Weight: 157 gram(with battery)

Lithium Battery

Nominal voltage: 3.7v

Nominal: 4.2v

Capacity rating: 1800mAh

Continuous standby time\*: (Relates to network status)  
240.5 hours

Continuous calling time: 980 min

\* Depending on the network

Operation Temperature: -10~+55 °C

The operation time of the battery depends on conditions  
such as:

- Transmitting power level
- Signal (distance between the phone and the base station)
- Network parameters defined by the operator
- Phone use (WAP, games, SMS)
- Charging procedure used

Exclusions:

Subject to the exclusions contained below:

1. Damage due to the improper use.
2. User does not follow the manual.

---

Explanation:

The company has the final right of the explanation for this document.

Software upgrades will not be announced.

All pictures are for reference only in the instruction book; please refer to the actual phone.

### **Disclaimer**

© Intex. All rights reserved.

Features and specifications are subject to change without prior notice. Certain mobile phone features may not be activated by your service provider, and / or their network setting may limit the feature's functionality. Services and some features such as GPRS, email may be dependent on the network, SIM card, as well as on the compatibility of the devices used and content formats supported and may require network/service subscription/solutions. Data transfers speeds are network dependent. Always contact your service provider for details or help. Talk and standby time is quoted in digital mode and are approximate; battery performance and the signal reception depend on network configuration, signal strength, type of SIM card, operating temperature, features selected as well as voice, data and other application usage pattern. The phones supports Bluetooth, A2DP, in order for Bluetooth devices to communicate with one another, they must utilize the same Bluetooth Profile. To determine the profiles supported by other Intex products, visit [www.intextechnologies.com](http://www.intextechnologies.com), for other devices, contact their respective manufacturers. Always demand for

---

original Intex mobile phones to protect against buying tinkered and/or used, refurbished or tampered phones. The warranty is applicable only for Intex phones; the company is not responsible for any loss or theft. Always use Intex original Enhancements (including batteries) for safety. The use of any other type may invalidate and approval or warranty applying to the mobile phone and may be dangerous. The phone is designed to operate using Li-ion batteries approved by the phone manufactures. Using non approved batteries with the phone may result in poor performance and damage to the phone or its enhancements. The display and products visualization here are illustrative purposes only; Display / color of the phone may differ from that shown on the manual. All features, functionality and other product specifications are based on the latest available information and are correct at the time of printing; however such product specifications are subject to change without notice. Copyrights are reserved. Intex is the trademark of INTEX TECHNOLOGIES (INDIA) LTD. which is registered. The unauthorized copying of copyrighted material is not legalized is inimical to the provisions of the copyright laws of India and other countries.

### **INFORMATION UNDER E-WASTE (MANAGEMENT AND HANDLING) RULES, 2011**

For disposal of e-waste, please call our helpline no. or visit our website.

E-waste Helpline no. 1800-103-8822

---

Weblink:

[http://intextechnologies.com/window\\_self/Waste%20Disposal.html](http://intextechnologies.com/window_self/Waste%20Disposal.html)

1. Do's for disposal of product

a) Always drop your used electronic products, batteries, and packaging materials after the end of their life in nearest collection point or collection center

b) Separate the packaging material according to responsible waste disposal options and sorting for recycling.

c) The battery can easily be removed from the product for recycling.

2. Don't of disposal of equipment

a) Never dump E-waste in garbage bins or municipal solid waste stream.

b) Do not dispose of your product as unsorted municipal waste.

c) Do not throw used batteries into household waste.

d) Do not dispose damaged or leaking Lithium Ion (Li-Ion) battery with normal household waste.

3. Information about the consequences of improper handling, accidental breakage damage and improper recycling of the end of life product.

a) If batteries are not properly disposed of, it can cause harm to human health or the environment.



- 
- b) Placing of batteries or devices on or in heating devices, such as microwave ovens, stoves, or radiators and improper disposal of batteries may lead to explosion.
  - c) If the battery terminals are in contact with metal objects, it may cause a fire.