

User Manual

Lava 3G 402+

1. Welcome	4
2.LAVA support and contact Information.....	4
3 .Your mobile	5
4. Text input.....	10
5. Phone call.....	11
6. Messages.....	11
7. Contacts.....	12
8. Email	13
9 .Getting connected.....	13
10. Managing Applications	16
11. Protecting Your Mobile Phone	16
12. Factory data reset	17
13. For your safety	17
14.Frequently Asked Questions and Troubleshooting.....	18
15. Safety Information and Notices.....	21
16.Trouble shooting	25
17. E-waste Disposal Mechanism.....	25
18. Do's and Don'ts for disposal e-waste ..	26
19. Lava warranty certificate	27

© 2013. All rights are reserved. No part of this document may be reproduced without permission.

While all efforts have been made to ensure the accuracy of all the contents in this manual, we assume no liability for errors or omissions or statements of any kind in this manual, whether such errors or omissions or statements resulting from negligence, accidents, or any other cause. The contents of this manual are subject to change without notice.

Protect our environment! We strive to produce products in compliance with global environmental standards. Please consult your local authorities for proper disposal.

Note: User Manual is just to guide the user about the functionality of the phone. It is not a certificate of technology. Some functions may vary due to modifications and upgrade of software, or due to print mistake.

1. Welcome

Congratulations on your purchase of the LAVA smartphone. Your phone provides many functions which are practical for daily use, such as a hands-free loudspeaker, camera, MP3 player, internet and much more.

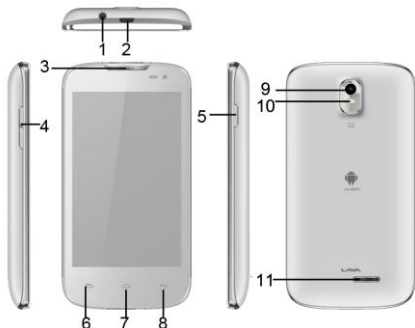
You can read the manual to understand how to use iris 402+ Smart phone and experience the well-established functions and simple operation method. Please use the original accessory in order to achieve the best use of effects. Use of non-original components may lead to damage caused to the machinery, in which case Lava shall not be responsible.

2.LAVA support and contact

Information

Check www.Lavamobiles.com web site for additional information downloads, and services related to your LAVA product.

3 .Your mobile



3.1Position of Keys

1.	Headphone Jack	2.	USB Jack
3.	Receiver	4.	Volume +/- key
5.	Power key	6.	Menu
7.	Home	8.	Back
9.	Camera	10.	flashlight
11.	Loudspeaker		

3.2Keys and connectors

Keys	Functions
Power key	Press: Lock the screen/Light up the screen Press and hold: Show the pop-up menu to select from Power off/ Restart/Airplane mode, at the same time you can switch the user profile by touching the icon in the lower of the pop. Press and hold: Power on

Menu	Press Menu key to open a content menu related with current screen or Application.
Home	While on any application or screen, touch to return to the Home screen. Open a list of thumbnail images of apps you've worked with recently. Touch it to open an app.
Back	Touch to go back to the previous screen, or to close a dialog box, options menu, the notification panel, etc.
Volume +/--key	Adjust the volume

3.3 Status bar

When a new notification comes, the corresponding icon will appear on the status bar, and it won't disappear, until you have done something with the notification.

If the status bar is full, some icons will be hidden.

Notification panel

Touch and drag down the Status bar to open the notification panel. Touch and drag up to close it. From the Notification panel, you can open items and other reminders indicated by notification icons or view wireless service information.

3.4 Getting started

3.4.1 Set-up

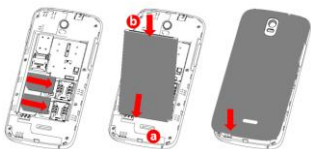
Removing the back cover , battery and SIM cards.

1. Please power off your phone.
2. Unclip the cover, and then remove the battery.
3. To remove the SIM cards, press and slide it out.



Installing the battery , SIM cards and back cover

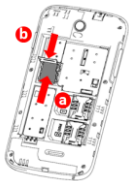
1. You must insert your SIM cards to make phone calls. Please power off your phone and remove battery before inserting or removing the SIM cards.
2. To install SIM cards, place the SIM cards with chip facing upwards downwards, and then slide it into its slot. Make sure that it is correctly inserted.
3. Insert and click the battery into place, then close the phone cover.



For Dual SIM model, The SIM1 slot supports 3G network and is compatible with 2G network , the SIM2 slot only supports 2G network.

Installing and removing the microSD card

1. Insert the external microSD card into the slot with contact points facing down. To remove the external microSD card, gently press and slide it out.
2. Before removing the microSD card, you should ensure the phone is off, to protect it from corruption or damage. In addition, regularly removing or inserting the SD card may cause the phone to restart.



Charging the battery

Connect the battery charger to your phone, and then the charge indicator at the center of screen will light. The charging status bar will take some time to display if your battery is extra consumed or in deep discharge mode.



To reduce power consumption and energy waste, when battery is fully charged, disconnect you charger from the plug; switch off Wi-Fi, Bluetooth or background-running applications when not in use; reduce the backlight time, etc.

3.4.2 Power on/off your phone

Power on your phone

Hold down the **Power** key until the phone powers on. It will take some seconds before the screen lights up.

Power off your phone

Hold down the **Power** key from the Home screen until the Phone options appear, select **Power off**, and touch **OK** to confirm.

3.5 Home screen

You can bring the items (Widgets, Shortcuts and Wallpaper) you like or use most frequently to your Home screen for quick access. Touch the **Home** key to switch to Home screen.

Home screen is provided in an extended format to allow more space for adding applications, shortcuts etc. Slide the Home screen horizontally left and right to get a complete view of the Home screen. Blue line at the lower left and right of the screen indicate which screen you are viewing.

3.5.1 Using the touchscreen

Touch : To access an application, touch it with your finger.

Touch and Hold: Touch and hold the home screen to access the available options for setting the wallpaper.

Drag :Place your finger on any item to drag it to another location.

Slide/Swipe: Slide the screen to scroll up and down the applications, images, web pages at your convenience.

Flick: Similar to swiping, but flicking makes it move quicker.

Pinch/Spread : Place your fingers of one hand on the screen

surface and draw them apart or together to scale an element on the screen.

Rotate: Automatically change the screen orientation from portrait to landscape by turning the phone sideways to have a better view.

3.5.2 Personalize your Home screen

Add

Touch the application tab, touch and hold an application or a widget to activate the Move mode, and drag the item to any Home screen as you prefer.

Reposition

Touch and hold the item to be repositioned to activate the Move mode, drag the item to the desired position and then release. You can move items both on the Home screen and the Favorite tray. Hold the icon on the left or right edge of the screen to drag the item to another Home screen.

Remove

Touch and hold the item to be removed to activate the Move mode, drag the item up to the top of **Remove** icon, and release after the item turns red.

Create folders

To improve the organization of items (shortcuts or applications) on the Home screen and the Favorite tray, you can add them to a folder by stacking one item on top of another. To rename a folder, open it, touch the folder's title bar to input the new name.

Wallpaper customization

Touch and hold an empty area then touch **Gallery\Live Wallpapers\Video Wallpaper\Wallpapers** on the Home screen to customize wallpaper.

3.5.3 Application tab

Touch application tab from the Home screen to enter applications list.

To return to the Home screen, touch the **Home** key.

View recently-used applications : To view recently-used applications, you can touch and hold the **Home**. Touch a

thumbnail in the window to open the related application.

3.5.4 Applications and widgets list

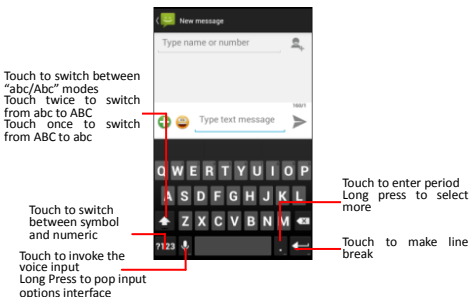
The list contains all pre-embedded and newly installed applications and widgets. To access the list, touch applications tab from the Home screen. Then touch the tab in the upper of screen, it will switch the corresponding interface

4. Text input

4.1 Using Onscreen Keyboard

Onscreen Keyboard settings

Touch application tab from the home screen, select **Settings** \ **Language & Input** touch the Settings icon on the right of Android keyboard, a series of settings are available for your selection.



4.2 Text editing

You can edit the text you have entered.

- Touch and hold or double-tap within the text you would like to edit.
- The upper of screen appears four icons, they represent separately cancel, select all, cut, copy.
- Drag the tap to change the high-lighted selection.

- Touch **Cut /Copy** icon to cut or copy the selected text.
- Touch and hold or double-tap the edit field, then touch **Paste**.
- Touch the blank to go back without any action.

5. Phone call

5.1 Making a call

You can easily launch a call using Phone. Touch Application tab from the Home screen and select **Phone**.

Enter the desired number from the keyboard directly (If you make a mistake, you can delete the incorrect digits by touching clear icon) or select a contact from Contacts or Call log by touching the tab of upper screen to touch or slide the list, then Touch the dial icon to select a card to place the call.

5.2 Answering or rejecting a call

When you receive a call, If you want to answer the call, slip the middle icon to right, the call will get connected. otherwise ,slip the middle icon to left to reject directly or to upside to send a text message.

5.3 Ending a call

When you are on a call, you can touch the **End** icon to hang up.

5.4 Shake to Answer and Hang up

Phone has special feature to Answer and hang up the call just by shaking the call. The settings can be done under other settings in call settings menu.

On incoming call Shake phone, it will automatically answer the phone, after you finish talking, shake phone again to hang up.

6. Messages

You can create, edit and receive SMS and MMS with this phone. To access this feature, touch Application tab from the Home screen then select **Messaging**. All messages you receive or send out can be saved in phone memory. To consult messages stored in SIM card, touch **Menu** key from the Messages list screen then touch **Settings\Text Message(SMS)\Manage SIM Card**

messages.

Writing message

On message list screen, touch the new message icon to write text/multimedia messages.

Sending a text message

Enter the mobile phone number of the recipient on **Type name or number** bar or touch Phonebook icon to add recipients, touch Type to compose bar to enter the text of the message. When finished, touch Send to send the text message.



A SMS of more than 160 characters will be charged as several SMS.

Sending a multimedia message

MMS enables you to send video clips, pictures, sounds, calendar, VCard and slides to other compatible phones and e-mail addresses. A SMS will be converted to MMS automatically when media files (image, video, audio, slides, etc.) are attached or Subject or email addresses added. Specific letters (accent) will also increase the size of the SMS, this may cause multiple SMS to be sent to your recipient.

7. Contacts

You can view and create contacts on your phone and synchronize these with your Email contacts or other applications on the web or on your phone.



*When using **People** app for the first time you are required to add new contacts, import contacts from SIM card or synchronize contacts from other application accounts to phone.*

7.1 Adding a contact

Touch Application tab on the Home screen, select Contacts app, then touch the icon in the lower right of screen, the contact list to create a new contact.

7.2 Importing , exporting and sharing contacts

From Contacts screen, touch **Menu** key to open options menu, touch **Import/export**. The phone can interchange contacts among SIM cards, phone contact, phone storage and memory

card. You can share a contact or a series of contacts via Bluetooth, email and so on.

7.3 Synchronizing contacts in multiple accounts

Contacts, data or other information can be synchronized from multiple accounts, depending on the applications installed on your phone.

8. Email

Besides your Email account, you **can also set-up external POP3, IMAP or Exchange email accounts** in your phone. To access this function, touch Application tab from Home screen, then select Email. An email wizard will guide you through the steps to set-up an email account.

- Enter the email address and password of the account you want to set-up.
- Touch **Next**. If the account you entered is not provided by your service provider in the phone, you will be prompted to go to the email account settings screen to enter settings manually.
- Enter the account name and display name in outgoing emails.
- To add another email account, you can touch **Menu** key and enter **Settings**, then touch **ADD ACCOUNT** to create.

To create and send emails

- Touch the icon in the lower left of screen from Inbox screen.
- Enter recipient(s) email address(es) in **To** field. If necessary, touch **Menu** key and touch **Add Cc/Bcc** to add a copy or a blind copy to the message.
- Enter the subject and the content of the message.
- Touch **Menu** key, touch **Attach file** to add a file.
- Finally, touch to send
- If you do not want to send the mail right away, you can touch **Save as draft** or touch **Back** key to save a copy

9 .Getting connected

To connect to the Internet with this phone, you can use

GPRS/EDGE/3G networks or Wi-Fi, whichever is most convenient.

9.1 Connecting to the Internet

9.1.1 GPRS/EDGE/3G

The first time you turn on your phone with SIM card inserted, the data connection is not connected, you can drag down notification panel then touch the upper right icon to enter the shortcut interface, find the data connection icon, touch it to open the network. To check the network connection you are using, touch Application tab on the Home screen, then touch **Settings\More\Mobile networks\Access Point Names or Network operators**.

9.1.2 Wi-Fi

Using Wi-Fi, you can connect to the Internet when your phone is within range of a wireless network. Wi-Fi can be used on the phone even without a SIM card inserted.

To turn Wi-Fi ON and connect to a wireless network

- . Touch **Wi-Fi**, detailed information of all detected Wi-Fi networks is displayed in the Wi-Fi networks section.
- . Touch on notification panel to get to settings.
- . Touch the switch beside Wi-Fi to turn on/off Wi-Fi.
- . Touch a Wi-Fi network to connect to it. If the network you selected is secured, you are required to enter a password or other credentials (contact network operator for details). When finished, touch **Connect**.

9.1.3 Bluetooth

If you are using Bluetooth, remember to stay within close range of other Bluetooth devices. Be aware that obstacles like walls or other electronic equipment may interfere with your Bluetooth connection.

Turning On Bluetooth

1. Touch **Settings> Bluetooth**, and then touch the right icon to turn on Bluetooth. When Bluetooth is turned on, the Bluetooth icon appears in the notification bar.
2. Touch your Bluetooth device name to make your mobile phone visible to other Bluetooth devices.

Pairing and Connecting a Bluetooth Device

1. Touch **Settings > Bluetooth > On**. Your mobile phone will then scan for Bluetooth devices in range (or touch **> SEARCH FOR DEVICES** to scan for Bluetooth devices).
2. Touch the device you want to pair with your mobile phone.

Sending Files via Bluetooth With Bluetooth

1. Touch and hold the file to be sent. The active options menu is displayed.
2. Touch **Share**, and then touch **Bluetooth** to select a paired device.

Disconnecting or Unpairing a Bluetooth Device

1. Touch **> Settings > Bluetooth**.
2. Touch the icon right of the connected device name then to select **Unpair** to disconnect the device.

9.2 Browser

Using Browser, you can enjoy surfing the Web. To access this function, touch Application tab from Home screen, then touch **Browser**.

To go to a web page

On Browser screen touch the URL box at the top, enter the address of the web page, then confirm. Some websites will hide the URL box automatically, you can scroll down the web page to let it be displayed.

9.3 Connecting to a computer

With the USB cable, you can transfer media files and other files between your micro SD card and computer.

To connect/disconnect your phone to/from the computer:

To connect your phone and your computer:

Use the USB cable that came with your phone to connect the phone to a USB port on your computer. You will receive a notification that the USB is connected.

If you use mass storage, open the Notification panel and touch USB connected, then check **USB storage** in the dialog

Unmount the microSD card on your computer:

Open the Notification panel and uncheck **USB storage**.

microSD card:

Touch Application tab from the Home screen to open the applications list.

Touch **File manager**. All data you have downloaded is stored in **File manager** where you can view media files (videos, photos, music and others), rename files, install applications into your phone, etc.

10. Managing Applications

Viewing an Installed Application

1. On the **Settings** screen, touch **Apps**
2. In the applications list, do any of the following:
 - Press Menu and then touch **Sort by size**. Then touch an application to view its details.
 - Select **Downloaded**, **SD card**, **Running** or **All**. Then touch an application to view its details.
 - Application manager (Assistant apk)in your phone helps to install application from your APK already present in the SD cards. It will detect the APK stored in the SD card and give option to install all or one by one.

Removing an Installed Application

1. On the **Settings** screen, touch **Apps**.
2. Touch an application, and then touch **Uninstall** to remove the application from your mobile phone.

11. Protecting Your Mobile Phone

Screen unlock

To enter the idle screen, you must pass the screen lock, if you enable the screen lock

On the **Settings** screen, touch **security** > **Screen lock**. there are pattern, PIN, Password to select and so on.

SIM Card lock

You must input the correct password every time, when the mobile phone power on

1. On the **Settings** screen, touch **security** > **Set up SIM card lock**.

2. Select the **Lock SIM card** check box.



You can dial emergency numbers any time from your mobile phone.

12. Factory data reset

To activate factory data reset:





Touch application tab from the Home screen then select **Settings \Backup & reset\Factory data reset.**



. Touch **Reset phone**

Phone reset will erase all of your personal data from internal phone storage, including information about your Email Account, any other accounts, your system and application settings, and any downloaded applications. Resetting the phone does not erase any system software updates you have downloaded or any files on your microSD card, such as music or photos. If you reset the phone in this way, you are prompted to re-enter the same kind of information as when you first started Android.

13. For your safety

Read these simple guideline. Not following them may be dangerous or illegal. Read the complete user manual for further information.

	Do not switch your phone ON when the use of wireless devices is prohibited or when the wireless device may cause interference or danger.
	Do not use your phone while driving.
	Follow relevant rules or regulations in hospitals and health care facilities. Switch your phone off near medical devices.
	Switch your phone off in aircraft. The radio signal from it may cause interference in signals of the aircraft.

	Switch your phone off near high-precision electronic devices. It may affect the performance of these devices.
	Do not attempt to disassemble your phone or its accessories. Only qualified personnel may service or repair the phone.
	Do not place your phone and its accessories in containers with strong electromagnetic field.
	Do not place magnetic storage media near your phone. Radiation from the phone may erase the information stored on them.
	Do not put your phone in a high-temperature place or use it in a place with flammable gas such as a petrol pumps.
	Keep your phone and its accessories away from children. Do not allow children to use your phone without guidance.
	Observe any laws or regulations on the use of phone. Respect others' privacy and legal rights when using your phone.

14. Frequently Asked Questions and Troubleshooting

Frequently Asked Questions	Cause and Solution
Unable to turn on phone	Press the power on key for over 1 second. Check if the battery is properly connected. Please remove and install it again, retry to turn on ; Check if battery is appropriately charged
Unable to connect to a network	Weak signal. Please Try and move to a location with strong signal and try connecting to the network again ; Please ensure that you are not beyond

	<p>the network coverage of service providers ;</p> <p>Please ensure you have a valid SIM card. Please contact your network provider for further information ;</p>
<p>Display information while turning on</p>	<p>Check if the SIM card (insert the SIM card) is installed correctly</p> <p>Handset lock password. If the handset lock is activated, you have to input handset password before using.</p> <p>Input PIN. Inputting PIN while turning on each time is activated, you have to input the PIN code.</p> <p>Input PUK code: Having input wrong PIN code for 3 times straight will lock the SIM card. You need to input the PUK code provided by your network provider.</p>
<p>Poor quality of calling</p>	<p>Please check if the sound volume is tuned improperly</p> <p>In an area with poor receiving condition, example: basement, the signal might be weak. Try reaching a location with stronger signal reception and call again.</p> <p>While using the mobile phone in the peak period of communication, like commute time, you may be unable to call because of line congestion.</p>
<p>Standby duration shortened</p>	<p>The standby duration is relative to the system setting of network. While the mobile phone is in an area with poor signal strength and can not receive the signal, the handset will continuously search for a base station. This will significantly reduce battery charge. It is recommended that you turn off your mobile in area with no signal reception to save battery.</p> <p>Need replacing the battery. Please</p>

	change a new battery.
SIM Card Error	Dirt on the metal surface of an SIM card. Use clean cloth to wipe the metal touch point on an SIM card. The SIM card is not installed. The SIM card is damaged. Please contact your network service provider.
Unable to dial out	Please confirm if you pressed the dial key after dialing. Please confirm if calling is forbidden because of default settings. Please confirm if the SIM is valid. Please confirm if the call barring is set. Please confirm if the fixed dial function is set.
Callers unable to contact you	Please confirm if the mobile phone is on and connected with the network. Please confirm if calling is forbidden because of defaulting. Please confirm if the SIM card is valid. Please confirm if the call barring is set.
Unable to charge handset	Poor contact. Please check if the plug is connected well. Please confirm if the environment temperature is within the range of 0°C ~40°C while charging. The battery or charger is damaged. You need to replace it.
Unable to set some functions	Wrong operation. The network provider does not support the function, or you have not applied for it.

Note: If the instruction above cannot help you solve problems, please record :

Mobile phone model and serial number

Specific content of warranty

Clear statement of problems

Then contact your local dealer or a **LAVA** authorized service

center in your area.

15. Safety Information and Notices

Using the Cellular Phone and Charger

Only use authorized battery and charger. Using other brands may cause battery leakage, overheating, explosion or even fire.

Caution:

Keep the phone away from dust, water and damp areas. Dust, water or other liquids may cause overheating, electrical leakage, and/or phone failure.

The phone, battery, charger and AC adapter are not waterproof. Keep them away from rain and liquid.

Warning:

Do not bump, shake or tamper with the phone or charger. This may cause battery leakage, overheating, explosion or even fire.

Do not place the battery, phone or charger near a microwave or high-voltage device. This may cause battery leakage, overheating, explosion or even fire; also prevent the phone and AC adapter from overheating, smoking or short circuiting.

Do not use the phone around volatile oil. This may cause fire, breakdown or damage.

To avoid any damage or breakdown, do not disassemble the phone, battery, charger or internal components by yourself.

Using the Cellular Phone

Warning:

Do not use the phone while you are driving. Pull over and stop your automobile to dial or listen to a phone call.

Usage of cellular phones in aircrafts or hospitals is prohibited. Switch the phone off to prevent interference with electronic medical devices. Follow any rules or regulations in such places.

Do not use the phone at a gas station, near fuel or near chemicals.

Do not use the phone near electronic medical devices such as hearing aids, pacemakers and auto-control devices such as fire detectors and automatic doors.

If you have to use your cellular phone near an electronic medical device such as a pacemaker, please contact your manufacturer

or dealer for information about preventing interference.

Caution:

Electronic systems in automobiles such as anti-lock brakes, speed control, or fuel spraying systems, are usually not influenced by wireless devices. Manufacturers of these systems will tell you whether they are provided with good screening functions. If you suspect that an automobile failure is caused by a wireless wave, please contact your automobile dealer.

Avoid using your phone in crowded places.

Do not store your cellular phone near or with a credit card, disk or other magnetic materials. This may effect information stored on your phone.

Keep your phone away from pins. Pins can be absorbed by the phone's receiver magnet, which may cause harm.

Using the Battery

Do not dispose of the battery into a fire. Doing so may cause battery explosion or even fire.

If you have difficulties installing the battery, do not force the installation. This may cause battery leakage, overheating, explosion or even fire.

Keep metal objects away so they do not come in contact with the battery or its connectors as it may cause the battery to short circuit, overheat or explode.

Do not weld the polarities of the battery directly together. This may cause battery leakage, overheating, explosion or even fire.

Battery liquid is severely harmful for your eyes. If battery liquid gets in your eyes, do not rub them. Instead, wash your eyes with water first and then go directly to a doctor for help.

Do not use or store your phone in high temperature areas. This may cause battery leakage, overheating, explosion or even fire.

Warning:

Replace the battery when the normal usage time begins to decrease or if you notice the battery is overheated or has changed shape or color.

If battery liquid leaks onto your skin or clothes, immediately wash the affected parts with water.

If the battery begins to leak or emits a strange odor, properly dispose of the battery according to local regulations. Do not throw it into a fire.

Caution:

Do not leave the product or its battery inside a vehicle or in places where the temperature may exceed 60°C (140°F), such as on a car dashboard, window sill, or behind a glass that is exposed to direct sunlight or strong ultraviolet light for extended periods of time. This may damage the product, overheat the battery, or pose a risk to the vehicle.

Using the Charger

Only use the charger that came with the phone. Using a different charger may cause the phone to breakdown or explode.

If the charger short circuits, a fire may occur.

Do not use a damaged, worn or broken charger. This may cause a fire.

Clean dust away from the power socket to avoid the possibility of a fire.

Do not store the charger near any liquids. If liquids spill onto the charger it may cause it to overheat or breakdown.

If liquid does spill onto the charger, immediately unplug the power cable to prevent overheating, fire or another type of breakdown.

Do not use the charger in places with high humidity like a bathroom. This may cause a fire or other breakdown.

Do not touch the charger, power cable or socket with wet hands. This may cause an electric shock.

Caution:

Keep the environment temperatures within the range of 0°C ~40°C while charging. Temperature below 0°C or higher than 40°C will cause insufficient charging, terminate charging or even cause the battery to explode.

Unplug the charger from its power source before cleaning it.

Do not place heavy objects on the power cord. This may cause electric shock or fire.

Hold the plug while unplugging the power cord. This will avoid any potential damage or even fire.

Requirements for Cellular Phone

Avoid using your cellular phone in extremely high or low temperatures. Use the phone in a temperature range between -10~55°C and humidity of 35%~85%.

It is recommended that you do not use your cellular phone near a telephone, TV set, radio or other radio frequency sensitive devices.

Requirements for the Battery

When not in use, store the battery in a cool, well-ventilated place with sunshine.

If you will not be using the cellular phone for an extended period of time, charge the battery on a regular basis to avoid battery breakdown.

The phone battery wears out fast. If charging the battery does not improve its performance, it is time to replace the battery. Properly dispose of the battery according to local regulations. Do not throw it into a fire.

Requirements for the Charger and AC Adapter

Do not charge your phone under the following circumstances: sunshine, temperatures equal to or lower than 0°C, temperatures equal to or higher than 40°C, high humidity, dust, high vibration areas, or near a TV, a radio, etc.

Cleaning and Maintenance

The cellular phone, the battery and the charger are not waterproof. Do not use them in places with high humidity like a bathroom and also avoid spilling any liquids on them.

Use a soft cloth to clean the cellular phone, the battery and the charger.

Do not use alcohol, diluted liquid or benzene to clean the cellular phone.

If dust gets in the sockets the phone can be damaged, short-circuit or even the lose the ability to be re-charged. Be sure to clean the socket regularly.

SAR declaration

The highest SAR value for this mobile phone is < 1.6 W/Kg, in accordance with the requirements of the ICNIRP, which recommended the limit for exposure to radio waves is 1.6 watts/kilogram(W/kg) averaged over 1 gram of tissue. For more information, please visit (www.lavamobiles.com) to query

Safety precautions:

- a. Use a wireless hands-free system (Headphone, headset) with a low power Bluetooth emitter
- b. Make sure the cell phone has a low SAR
- c. Keep your calls short or send a text message (SMS) instead. This advice applies especially to children, adolescents and pregnant women
- d. Use cell phone when the signal quality is good
- e. People having active medical implants should preferably keep the cell phone at least 15cm away from the implant

16.Trouble shooting

Please visit www.lavamobiles.com to find the Lava Service Centre nearest to you.

Service Center number

No.:+919560394002

Customer Care Number

1860-200-7500

Kindly note please send area code of place through SMS to Service Center number and in return you will get address of service center nearest to you by SMS

17. E-waste Disposal Mechanism

'E-waste' means waste electrical and electronic equipment (WEEE). In other words E-waste is a popular, informal name for electronic products nearing the end of their "useful life". For more details about e-waste please refer e-waste rules, 2011 www.moef.nic.in

18. Do's and Don'ts for disposal

e-waste

Do's:

- Ensure that an Authorized Person repairs your Lava products
- Call Our Local Authorized Collection Centers to Dispose Lava products
- Always drop your used electronic products, batteries or any accessories thereof after the end of their life at nearest Authorized Collection Point or Collection Center.
- Separate the packaging material according to responsible waste disposal options and sorting for recycling.
- Always remove the battery from the product, when you do not intend to use the product anymore it in future.

Don'ts:

- Do not Dismantle your Lava Product on your own
- Do not give your e-waste to Kabbadi Wala / Scrap Dealer/ Rag Pickers.
- Do not dispose-off the e-waste in landfills
- Never dump E-waste in garbage bins.
- Do not dispose of your product at municipal waste bins or rooms.
- Do not throw used batteries into household waste.

Consequences of improper handling and disposal of E-Waste

- Improper disposal of waste prevents natural resources from being re-used.
- Some waste contains hazardous chemicals and if not disposed of properly may release toxins into the soil and water, and also releases greenhouse gases into the environment
- If e-waste is not properly disposed of, it can threat to the health and well-being of humans and animals and it also has adverse effect on the environment.
- Placing of batteries or devices on or in heating devices, such as microwave, ovens, stoves, or radiators and improper disposal of batteries may lead to explosion.

- If the battery terminals are in contact with metal objects, it may cause a fire.

For more details on how to dispose of your Lava products at the end of life, Please refer the list of our Services Centers on Pan India basis on our website www.lavamobiles.com or please view this link for the details of Service Centers <http://www.lavamobiles.com/support-services>.

19. Lava warranty certificate

Limited warranty:

LAVA international Ltd. (LAVA) provides limited warranty for your mobile phone and original accessories delivered with your mobile phone (hereinafter referred to as “product”)

The warranty period for the transceiver is one (1) year and for battery, charger and headset is six (6) months from the date of purchase.

LAVA Warranty:

Subject to the conditions of this Limited Warranty, LAVA warrants a product to be free from defects in design, material and workmanship at the time of its original purchase by you, and for a subsequent period of one (1) year for transceiver and six (6) months for battery & charger.

You shall have coverage or benefits under this warranty in the event that any of the following conditions are applicable:

- The product has been subjected to abnormal use or conditions, improper storage, exposure to 1.excessive moisture or dampness, exposure to excessive temperature, unauthorized modification, unauthorized repair (including but not limited to use of unauthorized spare parts in repairs),abuse, accidents, Acts of God, spills of food or liquids, improper installation
- You have not notified Lava of the defect in the product during the applicable warranty period.
- The product serial no. code or the accessories date code has been removed, defaced or altered.

- The product has been used with or connected to an accessory (i) Not supplied by Lava or its affiliates, (ii) Not fit for use with the product or (iii) Used otherwise than in manner intended.
- The seals of the product's battery enclosure have been broken or shown evidence of tempering or the product's battery has been used in equipment other than that for which it has been specified usable by LAVA.
- All plastic surfaces and all other externally exposed part that is scratched or damaged due to normal use.

To get maximum of your new product, we recommend you to:

- Read the guidelines for safe and efficient use as mentioned in the manual.
- Read the terms and conditions of your Lava warranty in the manual.
- Keep your original receipt; you will need it for warranty services if asked to produce.
- Present this Lava Warranty Certificate along with original proof of purchase whenever you require any warranty services.

In case Lava product needs service, please visit the nearest Lava service centers given in the service guide. Please visit our Website www.lavamobiles.com for updated list of Authorized Service Centers near to your location.

Important note: for your warranty to be valid, all information on the warranty certificate has to be completed including the stamp from the authorized distributor/retailer.

All warranty information, product features and specifications are subject to change without notice.

IMEI No.
 Dealers Stamp
 Date of purchase
 Model No.

