



## HP 7 Plus G2 Tablet

Maintenance and Service Guide

**IMPORTANT!** This document is intended for HP authorized service providers only.

© Copyright 2014 Hewlett-Packard  
Development Company, L.P.

Bluetooth is a trademark owned by its  
proprietor and used by Hewlett-Packard  
Company under license. SD Logo is a  
trademark of its proprietor.

The information contained herein is subject  
to change without notice. The only  
warranties for HP products and services are  
set forth in the express warranty statements  
accompanying such products and services.  
Nothing herein should be construed as  
constituting an additional warranty. HP shall  
not be liable for technical or editorial errors  
or omissions contained herein.

First Edition: September 2014

Document Part Number: 786902-001

### **Product notice**

This guide describes features that are  
common to most models. Some features  
may not be available on your tablet.

### **Software terms**

By installing, copying, downloading, or  
otherwise using any software product  
preinstalled on this tablet, you agree to be  
bound by the terms of the HP End User  
License Agreement (EULA). If you do not  
accept these license terms, your sole  
remedy is to return the entire unused  
product (hardware and software) within 14  
days for a refund subject to the refund  
policy of your place of purchase.

For any further information or to request a  
full refund of the tablet, please contact your  
local point of sale (the seller).

## Safety warning notice

---

**⚠ WARNING!** To reduce the possibility of heat-related injuries or of overheating the device, do not place the device directly on your lap or obstruct the device air vents. Use the device only on a hard, flat surface. Do not allow another hard surface, such as an adjoining optional printer, or a soft surface, such as pillows or rugs or clothing, to block airflow. Also, do not allow the AC adapter to contact the skin or a soft surface, such as pillows or rugs or clothing, during operation. The device and the AC adapter comply with the user-accessible surface temperature limits defined by the International Standard for Safety of Information Technology Equipment (IEC 60950).

---



---

# Table of contents

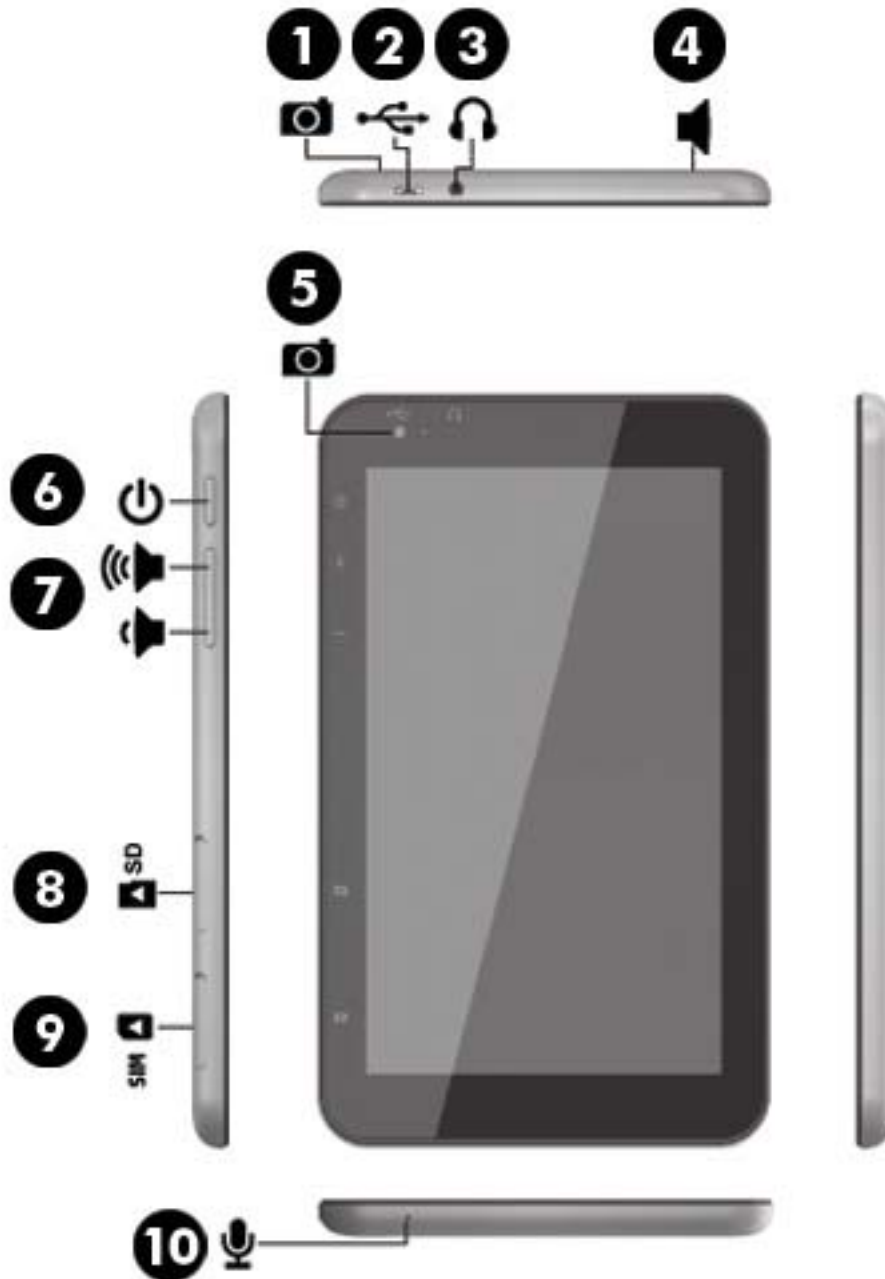
<b>1</b>	<b>Product description</b>	<b>1</b>
<b>2</b>	<b>External component identification</b>	<b>2</b>
<b>3</b>	<b>Illustrated parts catalog</b>	<b>4</b>
	Locating the product number and serial number	4
	Tablet major components	5
	Miscellaneous parts	6
	Sequential part number listing	6
<b>4</b>	<b>Removal and replacement preliminary requirements</b>	<b>8</b>
	Tools required	8
	Service considerations	8
	Plastic parts	8
	Cables and connectors	8
	Grounding guidelines	9
	Electrostatic discharge damage	9
	Packaging and transporting guidelines	10
	Workstation guidelines	10
<b>5</b>	<b>Removal and replacement procedures</b>	<b>12</b>
	Tablet component replacement procedures	12
	Back cover	12
	Battery	14
	Antenna	16
	Speaker	17
	Rear-facing webcam	19
	Microphone	20
	Connector board	21
	System board	22
	Front-facing webcam	24
<b>6</b>	<b>Specifications</b>	<b>26</b>

<b>7 Power cord set requirements</b> .....	<b>27</b>
Requirements for all countries .....	27
Requirements for specific countries and regions .....	27
<b>8 Recycling</b> .....	<b>29</b>
<b>Index</b> .....	<b>30</b>

# 1 Product description

Category	Description
Product Name	HP 7 Plus G2 Tablet
Processor	Intel® Z2520 1.20-GHz dual core processor
Panel	7.0-in [1024×600], AG, IPS, LED, multi-touch, wide-viewing angle, 5-point capacitive, auto-rotate [selectable], tempered-glass, backlit, TouchScreen display panel
Memory	Supports 1.0-GB DDR
Mass storage	Supports 8.0- or 16.0-GB eMMC solid-state drives
Audio and video	One microphone One speaker 2.0-MP, fixed-focus, HD, rear-facing webcam 0.3-MP, fixed-focus, VGA front-facing webcam
Sensor	Accelerometer G-sensor GPS
Wireless networking	<b>WLAN:</b> 802.11 b/g/n, Miracast compatible <b>3G data (GSM):</b> 900-/1800- or 850-/1900-MHz <b>WCDMA:</b> 900-/2100- or 850-/1900M-Hz) <b>Bluetooth:</b> 4.0, WAPI
External expansion	Integrated micro SD Card Reader expandable to 64-GB
Ports	<ul style="list-style-type: none"><li>• Audio: headphone/microphone combo jack</li><li>• Micro SD Card Reader</li><li>• Micro USB</li></ul>
Power requirements	Support for 3100-mAhr, USB charging (non-removable) Support for 5-V / 1-A AC adapter with DC plug and localized cable plug support
Operating system	<b>Preinstalled:</b> Android 4.4.2
Serviceability	<b>End user replaceable part:</b> AC adapter and USB cable

## 2 External component identification




Item	Component	Item	Component
(1)	Rear-facing webcam	(6)	Power button



<b>Item</b>	<b>Component</b>	<b>Item</b>	<b>Component</b>
<b>(2)</b>	Micro USB 2.0 port	<b>(7)</b>	Volume control buttons (2)
<b>(3)</b>	Audio-out (headphone)/Audio-in (microphone) jack	<b>(8)</b>	Micro SD Card Reader slot
<b>(4)</b>	Speaker	<b>(9)</b>	Micro SIM slot
<b>(5)</b>	Front-facing webcam	<b>(10)</b>	Microphone

---

## 3 Illustrated parts catalog

 **NOTE:** HP continually improves and changes product parts. For complete and current information on supported parts for your computer, go to <http://partsurfer.hp.com>, select your country or region, and then follow the on-screen instructions.

---

### Locating the product number and serial number

The tablet product number (1) and serial number (2) are located on the tablet back cover. This information may be needed when travelling internationally or when contacting support.



# Tablet major components



Item	Component	Spare part number
(1)	<b>Back cover</b> (includes antenna and power/volume button actuator)	790586-001
(2)	<b>Speaker</b> (includes cables)	790591-001
(3)	<b>Audio jack light pipe</b>	
(4)	<b>Rear-facing webcam</b> (2.0-MP, fixed-focus, HD; includes cable)	790595-001
(5)	<b>Front-facing webcam</b> (0.3-MP, fixed-focus, VGA; includes cable and double-sided adhesive)	790594-001
(6)	<b>Battery</b> (3100-mAh, USB-charging; includes cable and double-sided adhesive)	790587-001
(7)	<b>System board</b> equipped with an Intel Z2520 1.20-GHz dual core processor, a graphics subsystem with UMA memory, and 1.0-GB of system memory	
	Equipped with a 16-GB eMMC hard drive	790593-001
	Equipped with a 8-GB eMMC hard drive	790592-001
(8)	<b>Connector board</b> (includes SD Card reader slot, SIM slot, and cable)	790596-001
(9)	<b>Microphone</b> (includes cable)	790597-001
(10)	<b>Antenna</b> (included in the Antenna Kit, spare part number <b>790600-001</b> . Includes the antenna transceiver, cable, and double-sided adhesive.)	
(11)	<b>Display panel assembly</b> (7.0-in [1024×600], AG, IPS, LED, multi-touch, wide-viewing angle, 5-point capacitive, auto-rotate [selectable], tempered-glass, backlit, TouchScreen; includes display panel cable and TouchScreen cable)	790589-001

## Miscellaneous parts

Component	Spare part number
<b>5-V / 1-A AC adapter:</b>	
For use in Asia/Pacific countries and regions	791731-004
For use in Europe	791731-009
For use in Latin America	791731-007
For use in North America	791731-008
For use in the United Kingdom	791731-003
<b>Cable Kit</b>	745159-001
<b>HP 7 Plus G2 Tablet</b> equipped with a 7.0-in (1024×600), AG, IPS, LED, multi-touch, wide-viewing angle, 5-point capacitive, auto-rotate (selectable), tempered-glass, backlit, TouchScreen display panel, an Intel Z2520 1.20-GHz dual core processor, a graphics subsystem with UMA memory, and 1.0-GB of system memory	
Equipped with a 16-GB eMMC hard drive for use in Europe, the Middle East, and Africa	790616-021
Equipped with a 16-GB eMMC hard drive for use in North America	790616-001
Equipped with a 8-GB eMMC hard drive for use in Europe, the Middle East, and Africa	790601-021
Equipped with a 8-GB eMMC hard drive for use in North America	790601-001
<b>Plastics Kit</b>	790599-001
<b>Rubber Kit</b> (includes rear-facing webcam rubber lens cover)	790598-001
<b>Screw Kit</b>	790590-001
<b>USB extension cable</b>	791929-001

## Sequential part number listing

Spare part number	Description
790586-001	Back cover (includes antenna and power/volume button actuator)
790587-001	Battery (3100-mAh, USB-charging; includes cable and double-sided adhesive)
790588-001	Cable Kit
790589-001	Display panel assembly (7.0-in [1024×600], AG, IPS, LED, multi-touch, wide-viewing angle, 5-point capacitive, auto-rotate [selectable], tempered-glass, backlit, TouchScreen; includes display panel cable and TouchScreen cable)
790590-001	Screw Kit
790591-001	Speaker (includes cables)
790592-001	System board equipped with an Intel Z2520 1.20-GHz dual core processor, a graphics subsystem with UMA memory, 1.0-GB of system memory, and a 8-GB eMMC hard drive
790593-001	System board equipped with an Intel Z2520 1.20-GHz dual core processor, a graphics subsystem with UMA memory, 1.0-GB of system memory, and a 16-GB eMMC hard drive
790594-001	Front-facing webcam (0.3-MP, fixed-focus, VGA; includes cable and double-sided adhesive)

Spare part number	Description
790595-001	Rear-facing webcam (2.0-MP, fixed-focus, HD; includes cable)
790596-001	Connector board (includes SD Card reader slot, SIM slot, and cable)
790597-001	Microphone (includes cable)
790598-001	Rubber Kit (includes rear-facing webcam rubber lens cover)
790599-001	Plastics Kit
790600-001	Antenna Kit (includes the antenna transceiver, cable, and double-sided adhesive)
790601-001	HP 7 Plus G2 Tablet equipped with a 7.0-in (1024×600), AG, IPS, LED, multi-touch, wide-viewing angle, 5-point capacitive, auto-rotate (selectable), tempered-glass, backlit, TouchScreen display panel, an Intel Z2520 1.20-GHz dual core processor, a graphics subsystem with UMA memory, 1.0-GB of system memory, and a 8-GB eMMC hard drive for use in North America
790601-021	HP 7 Plus G2 Tablet equipped with a 7.0-in (1024×600), AG, IPS, LED, multi-touch, wide-viewing angle, 5-point capacitive, auto-rotate (selectable), tempered-glass, backlit, TouchScreen display panel, an Intel Z2520 1.20-GHz dual core processor, a graphics subsystem with UMA memory, 1.0-GB of system memory, and a 8-GB eMMC hard drive for use in Europe, the Middle East, and Africa
790616-001	HP 7 Plus G2 Tablet equipped with a 7.0-in (1024×600), AG, IPS, LED, multi-touch, wide-viewing angle, 5-point capacitive, auto-rotate (selectable), tempered-glass, backlit, TouchScreen display panel, an Intel Z2520 1.20-GHz dual core processor, a graphics subsystem with UMA memory, 1.0-GB of system memory, and a 16-GB eMMC hard drive for use in North America
790616-021	HP 7 Plus G2 Tablet equipped with a 7.0-in (1024×600), AG, IPS, LED, multi-touch, wide-viewing angle, 5-point capacitive, auto-rotate (selectable), tempered-glass, backlit, TouchScreen display panel, an Intel Z2520 1.20-GHz dual core processor, a graphics subsystem with UMA memory, 1.0-GB of system memory, and a 16-GB eMMC hard drive for use in Europe, the Middle East, and Africa
791731-003	5-V / 1-A AC adapter for use only in the United Kingdom
791731-004	5-V / 1-A AC adapter for use only in Asia/Pacific countries and regions
791731-007	5-V / 1-A AC adapter for use only in Latin America
791731-008	5-V / 1-A AC adapter for use only in North America
791731-009	5-V / 1-A AC adapter for use only in Europe
791929-001	USB extension cable

---

# 4 Removal and replacement preliminary requirements

## Tools required


You will need the following tools to complete the removal and replacement procedures:

- Magnetic screw driver
- Phillips P0 screw driver
- Plastic case utility tool

## Service considerations

The following sections include some of the considerations that you must keep in mind during disassembly and assembly procedures.


---

 **NOTE:** As you remove each subassembly from the tablet, place the subassembly (and all accompanying screws) away from the work area to prevent damage.

---

## Plastic parts


---

 **CAUTION:** Using excessive force during disassembly and reassembly can damage plastic parts. Use care when handling the plastic parts. Apply pressure only at the points designated in the maintenance instructions.

---

## Cables and connectors

---

 **CAUTION:** When servicing the tablet, be sure that cables are placed in their proper locations during the reassembly process. Improper cable placement can damage the tablet.

---

Cables must be handled with extreme care to avoid damage. Apply only the tension required to unseat or seat the cables during removal and insertion. Handle cables by the connector whenever possible. In all cases, avoid bending, twisting, or tearing cables. Be sure that cables are routed in such a way that they cannot be caught or snagged by parts being removed or replaced. Handle flex cables with extreme care; these cables tear easily.

# Grounding guidelines

## Electrostatic discharge damage

Electronic components are sensitive to electrostatic discharge (ESD). Circuitry design and structure determine the degree of sensitivity. Networks built into many integrated circuits provide some protection, but in many cases, ESD contains enough power to alter device parameters or melt silicon junctions.

A discharge of static electricity from a finger or other conductor can destroy static-sensitive devices or microcircuitry. Even if the spark is neither felt nor heard, damage may have occurred.

An electronic device exposed to ESD may not be affected at all and can work perfectly throughout a normal cycle. Or the device may function normally for a while, then degrade in the internal layers, reducing its life expectancy.

**⚠ CAUTION:** To prevent damage to the tablet when you are removing or installing internal components, observe these precautions:

Keep components in their electrostatic-safe containers until you are ready to install them.

Before touching an electronic component, discharge static electricity by using the guidelines described in this section.

Avoid touching pins, leads, and circuitry. Handle electronic components as little as possible.

If you remove a component, place it in an electrostatic-safe container.

The following table shows how humidity affects the electrostatic voltage levels generated by different activities.

**⚠ CAUTION:** A product can be degraded by as little as 700 V.

Typical electrostatic voltage levels			
Event	Relative humidity		
	10%	40%	55%
Walking across carpet	35,000 V	15,000 V	7,500 V
Walking across vinyl floor	12,000 V	5,000 V	3,000 V
Motions of bench worker	6,000 V	800 V	400 V
Removing DIPS from plastic tube	2,000 V	700 V	400 V
Removing DIPS from vinyl tray	11,500 V	4,000 V	2,000 V
Removing DIPS from Styrofoam	14,500 V	5,000 V	3,500 V
Removing bubble pack from PCB	26,500 V	20,000 V	7,000 V
Packing PCBs in foam-lined box	21,000 V	11,000 V	5,000 V

## Packaging and transporting guidelines

Follow these grounding guidelines when packaging and transporting equipment:

- To avoid hand contact, transport products in static-safe tubes, bags, or boxes.
- Protect ESD-sensitive parts and assemblies with conductive or approved containers or packaging.
- Keep ESD-sensitive parts in their containers until the parts arrive at static-free workstations.
- Place items on a grounded surface before removing items from their containers.
- Always be properly grounded when touching a component or assembly.
- Store reusable ESD-sensitive parts from assemblies in protective packaging or nonconductive foam.
- Use transporters and conveyors made of antistatic belts and roller bushings. Be sure that mechanized equipment used for moving materials is wired to ground and that proper materials are selected to avoid static charging. When grounding is not possible, use an ionizer to dissipate electric charges.

## Workstation guidelines

Follow these grounding workstation guidelines:

- Cover the workstation with approved static-shielding material.
- Use a wrist strap connected to a properly grounded work surface and use properly grounded tools and equipment.
- Use conductive field service tools, such as cutters, screw drivers, and vacuums.
- When fixtures must directly contact dissipative surfaces, use fixtures made only of static-safe materials.
- Keep the work area free of nonconductive materials, such as ordinary plastic assembly aids and Styrofoam.
- Handle ESD-sensitive components, parts, and assemblies by the case or PCM laminate. Handle these items only at static-free workstations.
- Avoid contact with pins, leads, or circuitry.
- Turn off power and input signals before inserting or removing connectors or test equipment.



## Equipment guidelines

Grounding equipment must include either a wrist strap or a foot strap at a grounded workstation.

- When seated, wear a wrist strap connected to a grounded system. Wrist straps are flexible straps with a minimum of one megohm  $\pm 10\%$  resistance in the ground cords. To provide proper ground, wear a strap snugly against the skin at all times. On grounded mats with banana-plug connectors, use alligator clips to connect a wrist strap.
- When standing, use foot straps and a grounded floor mat. Foot straps (heel, toe, or boot straps) can be used at standing workstations and are compatible with most types of shoes or boots. On conductive floors or dissipative floor mats, use foot straps on both feet with a minimum of one megohm resistance between the operator and ground. To be effective, the conductive must be worn in contact with the skin.


The following grounding equipment is recommended to prevent electrostatic damage:

- Antistatic tape
- Antistatic smocks, aprons, and sleeve protectors
- Conductive bins and other assembly or soldering aids
- Nonconductive foam
- Conductive tabletop workstations with ground cords of one megohm resistance
- Static-dissipative tables or floor mats with hard ties to the ground
- Field service kits
- Static awareness labels
- Material-handling packages
- Nonconductive plastic bags, tubes, or boxes
- Metal tote boxes
- Electrostatic voltage levels and protective materials


The following table lists the shielding protection provided by antistatic bags and floor mats.

Material	Use	Voltage protection level
Antistatic plastics	Bags	1,500 V
Carbon-loaded plastic	Floor mats	7,500 V
Metallized laminate	Floor mats	5,000 V

# 5 Removal and replacement procedures

 **NOTE:** HP continually improves and changes product parts. For complete and current information on supported parts for your computer, go to <http://partsurfer.hp.com>, select your country or region, and then follow the on-screen instructions.

## Tablet component replacement procedures

 **CAUTION:** Tablet components described in this chapter should only be accessed by an authorized service provider. Accessing these parts can damage the tablet and void the warranty.

This chapter provides removal and replacement procedures for authorized service provider only parts.

There are as many as [] screws that must be removed, replaced, and/or loosened when servicing the tablet. Make special note of each screw size and location during removal and replacement.


## Back cover

Description	Spare part number
Back cover (includes antenna and power/volume button actuator)	790586-001
Display panel assembly (7.0-in [1024×600], AG, IPS, LED, multi-touch, wide-viewing angle, 5-point capacitive, auto-rotate [selectable], tempered-glass, backlit, TouchScreen; includes display panel cable and TouchScreen cable)	790589-001


Before disassembling the tablet, follow these steps:

1. Turn off the tablet. If you are unsure whether the tablet is off or in Hibernation, turn the tablet on, and then shut it down through the operating system.
2. Disconnect the power from the tablet by unplugging the power cord from the tablet.
3. Disconnect all external devices from the tablet.

Remove the back cover:

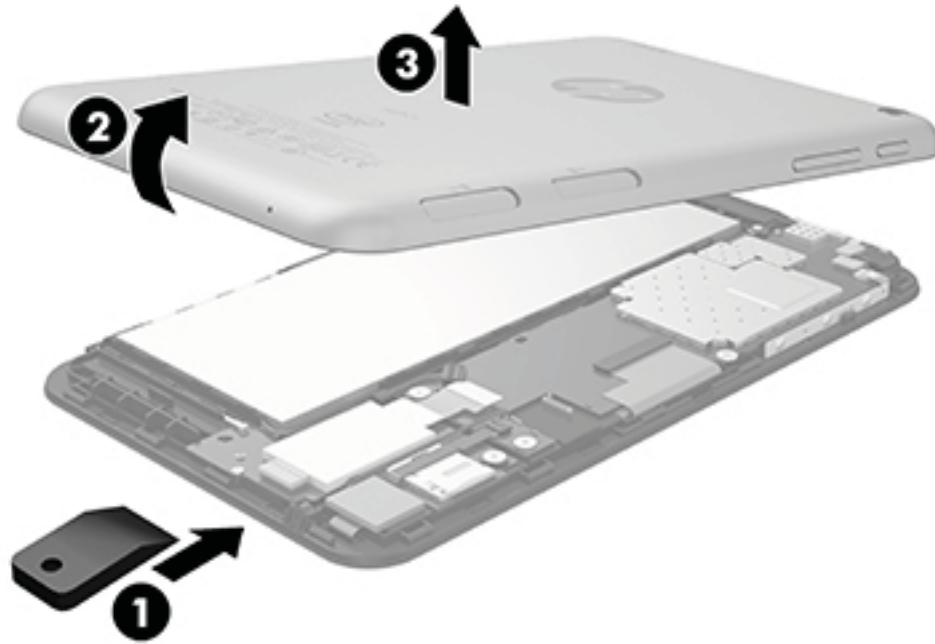
 **CAUTION:** Before turning the display panel assembly upside down, make sure the work surface is clear of tools, screws, and any other foreign objects. Failure to follow this caution can result in damage to the display panel assembly.

1. Place the tablet on a flat surface, display panel side down, with the power button toward you.


 **CAUTION:** When inserting the plastic tool into the tablet as described in Step 2, make sure not to insert the tool into the volume control buttons area. Failure to follow this caution can result in damage to the tablet.

2. Insert a thin, plastic tool (1) between the back cover and the display panel assembly. The first insertion point should be near the bottom edge of the tablet.
3. Lift the bottom edge of the back cover (2) until it separates from the display panel assembly.

4. Remove the back cover (3).



---

 **NOTE:** If the volume button actuator (1) and power button actuator (2) should become displaced during the removal of the back cover, install the actuator into the openings in the back cover as indicated in the following illustration.

The actuators are included in the back cover spare part kit.

---



Reverse this procedure to install the back cover.

## Battery

Description	Spare part number
Battery (3100-mAh, USB-charging; includes cable and double-sided adhesive)	790587-001

Before removing the battery, follow these steps:

1. Turn off the tablet. If you are unsure whether the tablet is off or in Hibernation, turn the tablet on, and then shut it down through the operating system.
2. Disconnect the power from the tablet by unplugging the power cord from the tablet.
3. Disconnect all external devices from the tablet.
4. Remove the back cover (see [Back cover on page 12](#)).

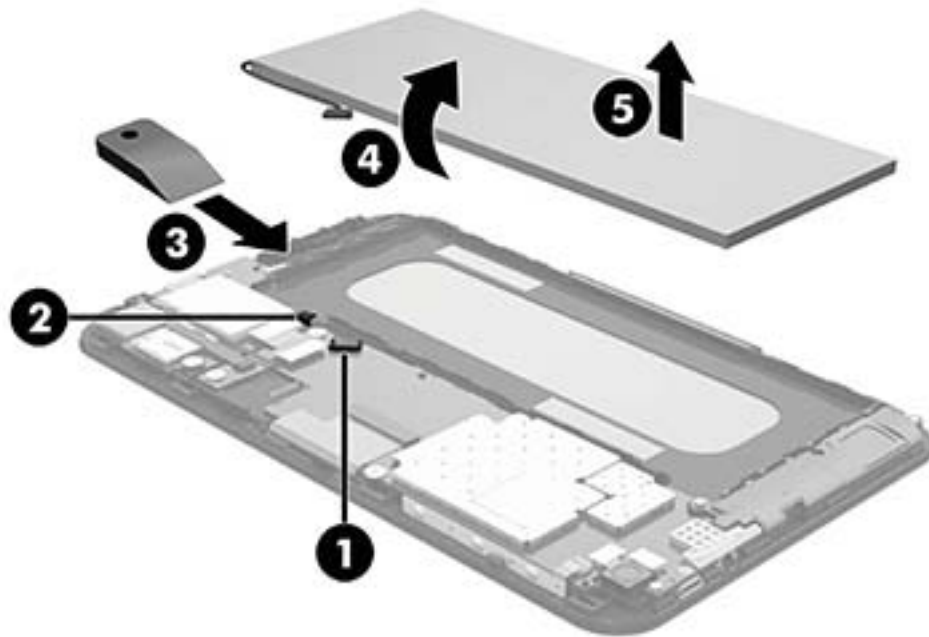
**⚠ WARNING!** To reduce potential safety issues, use only the battery provided with the tablet, a replacement battery provided by HP, or a compatible battery purchased from HP.

**⚠ CAUTION:** Removing a battery that is the sole power source for the tablet can cause loss of information. To prevent loss of information, save your work or shut down the tablet through Windows before removing the battery.

Remove the battery:

1. Disconnect the battery cable **(1)** from the system board.
2. Release the battery cable from the retention clip **(2)** built into the display panel assembly.
3. Insert a thin, plastic tool **(3)** between the battery and the display panel assembly.
4. Detach the battery **(4)** from the display panel assembly. (The battery is attached to the display panel assembly with double-sided adhesive.)

5. Remove the battery (5).



Reverse this procedure to install the battery.

# Antenna

Description	Spare part number
Antenna (included in the Antenna Kit, spare part number <b>790600-001</b> . Includes the antenna transceiver, cable, and double-sided adhesive.)	

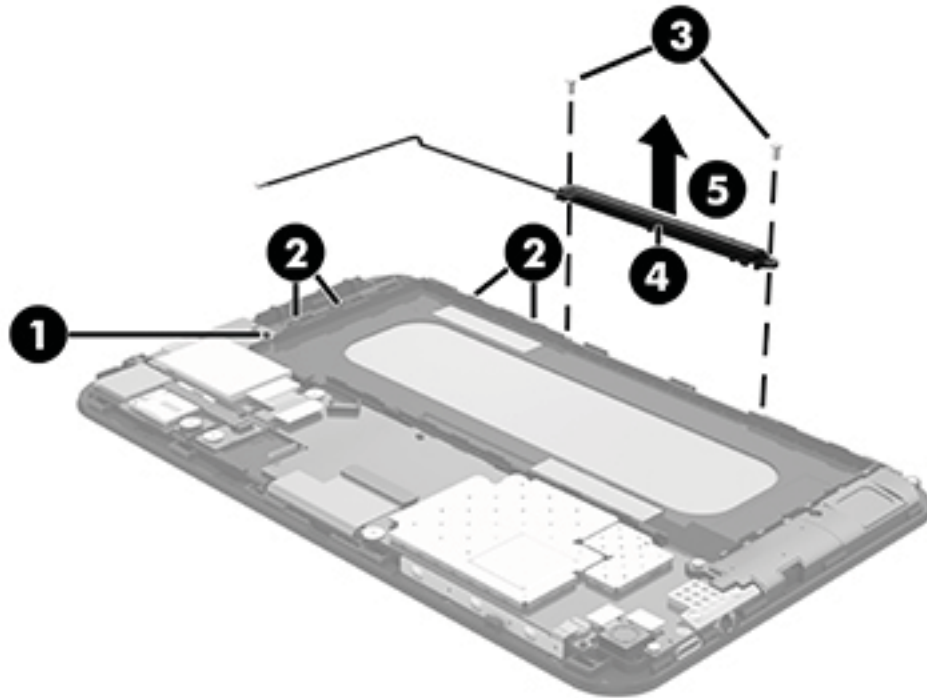
Before removing the antenna, follow these steps:

1. Turn off the tablet. If you are unsure whether the tablet is off or in Hibernation, turn the tablet on, and then shut it down through the operating system.
2. Disconnect the power from the tablet by unplugging the power cord from the tablet.
3. Disconnect all external devices from the tablet.
4. Remove the back cover (see [Back cover on page 12](#)).
5. Disconnect the battery cable from the system board (see [Battery on page 14](#)).

Remove the antenna board:

1. Disconnect the antenna cable from the connector board antenna terminal **(1)**.
2. Release the antenna cable from the retention clips **(2)** and routing channel built into the display panel assembly.
3. Remove the two Phillips PM1.4×3.6 screws **(3)** that secure the antenna transceiver to the display panel assembly.
4. Detach the antenna transceiver **(4)** from the display panel assembly. (The antenna transceiver is attached to the display panel assembly with double-sided adhesive.)

5. Remove the antenna transceiver (5) and cable.



6. Remove the antenna board and cables.  
Reverse this procedure to install the antenna board.

## Speaker


Description	Spare part number
Speaker (includes cables)	790591-001

Before removing the speaker, follow these steps:

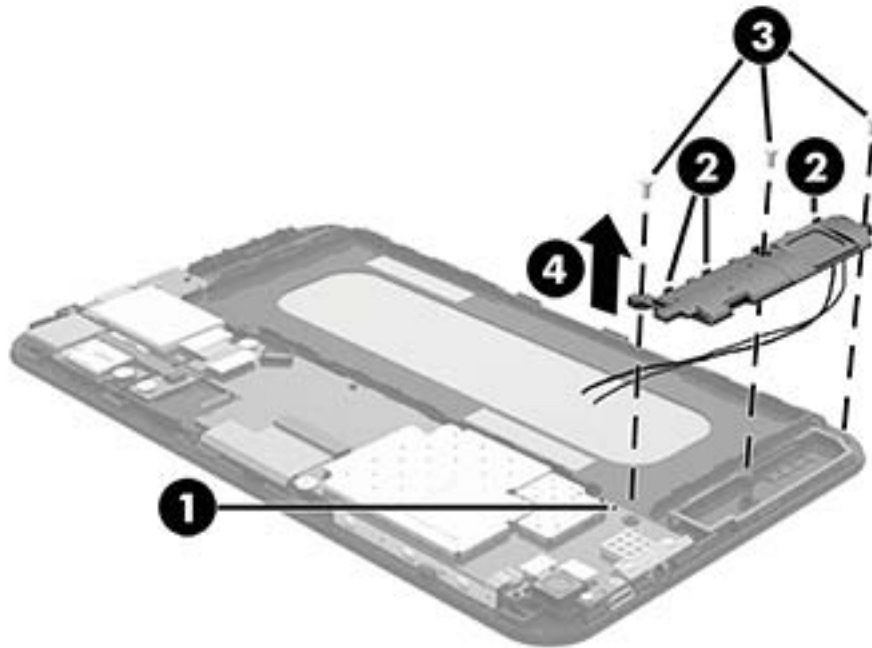
1. Turn off the tablet. If you are unsure whether the tablet is off or in Hibernation, turn the tablet on, and then shut it down through the operating system.
2. Disconnect the power from the tablet by unplugging the power cord from the tablet.
3. Disconnect all external devices from the tablet.
4. Remove the back cover (see [Back cover on page 12](#)).
5. Disconnect the battery cable from the system board (see [Battery on page 14](#)).

Remove the speaker:

1. Unsolder the red and black speaker cables (1) from the system board speaker contact points.

 **NOTE:** When installing the speaker, the red speaker cable should be soldered to the system board speaker “positive” terminal. The black speaker cable should be soldered to the system board speaker “negative” terminal.

2. Release the speaker cables from the retention clips (2) built into the speaker.
3. Remove the two Phillips PM1.4×3.6 screws (3) that secure the speaker to the display panel assembly.
4. Remove the speaker (4).



Reverse this procedure to install the speaker.



# Rear-facing webcam


Description	Spare part number
Rear-facing webcam (2.0-MP, fixed-focus, HD; includes cable)	790595-001

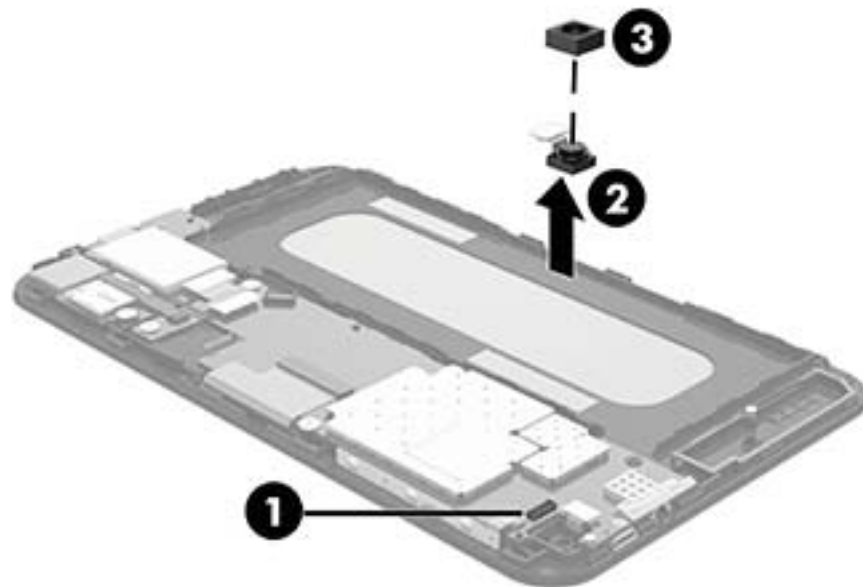
Before removing the rear-facing webcam, follow these steps:

1. Turn off the tablet. If you are unsure whether the tablet is off or in Hibernation, turn the tablet on, and then shut it down through the operating system.
2. Disconnect the power from the tablet by unplugging the power cord from the tablet.
3. Disconnect all external devices from the tablet.
4. Remove the back cover (see [Back cover on page 12](#)).
5. Disconnect the battery cable from the system board (see [Battery on page 14](#)).

Remove the rear-facing webcam:

1. Disconnect the rear-facing webcam cable (1) from the system board.
2. Remove the rear-facing webcam (2) and cable from the molding built into the display panel assembly.

 **NOTE:** If the rear-facing webcam rubber lens cover (3) should become lost or damaged when removing the rear-facing webcam, a replacement cover is available in the Rubber Kit, spare part number 790598-001.



Reverse this procedure to install the rear-facing webcam.

# Microphone


Description	Spare part number
Microphone (includes cable)	790597-001

Before removing the microphone, follow these steps:

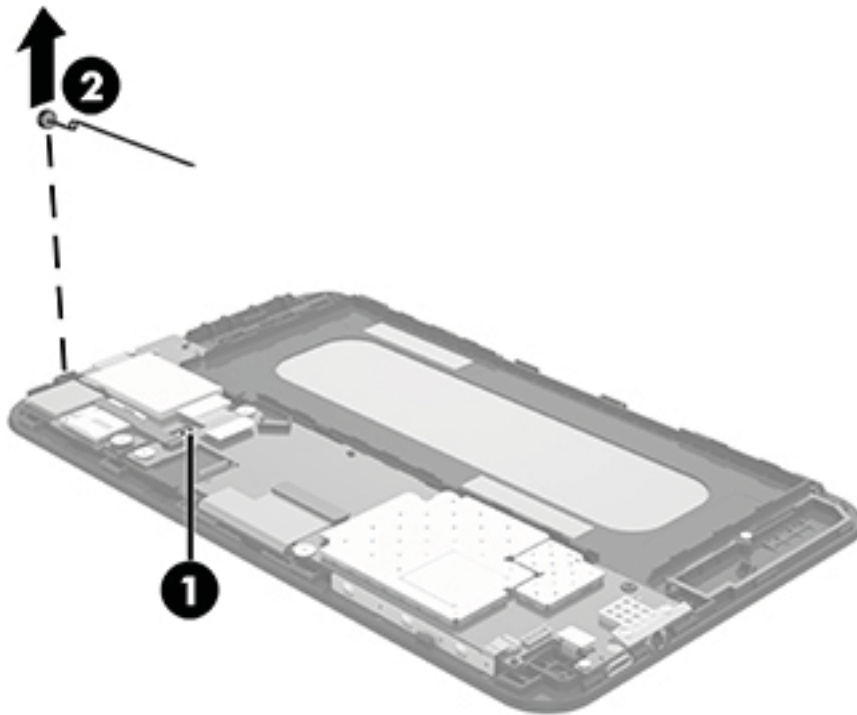
1. Turn off the tablet. If you are unsure whether the tablet is off or in Hibernation, turn the tablet on, and then shut it down through the operating system.
2. Disconnect the power from the tablet by unplugging the power cord from the tablet.
3. Disconnect all external devices from the tablet.
4. Remove the back cover (see [Back cover on page 12](#)).
5. Disconnect the battery cable from the system board (see [Battery on page 14](#)).

Remove the microphone:

1. Unsolder the red and black microphone cables (1) from the system board microphone contact points.

 **NOTE:** When installing the microphone, the red microphone cable should be soldered to the system board microphone “positive” terminal. The black microphone cable should be soldered to the system board microphone “negative” terminal.

2. Release the microphone (2) from the molding built into display panel assembly.



3. Remove the microphone and cable.

Reverse this procedure to install the microphone.

## Connector board

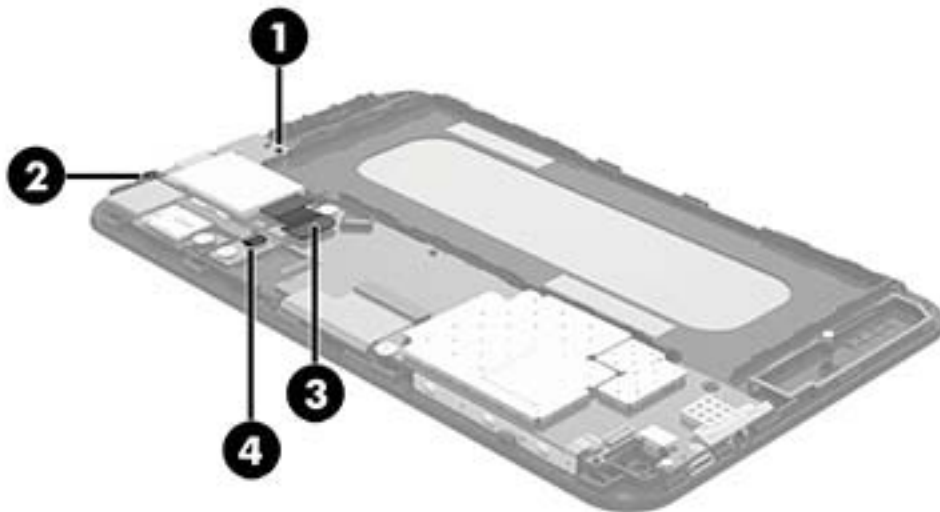
Description	Spare part number
Connector board (includes SD Card reader slot, SIM slot, and cable)	790596-001

Before removing the connector board, follow these steps:

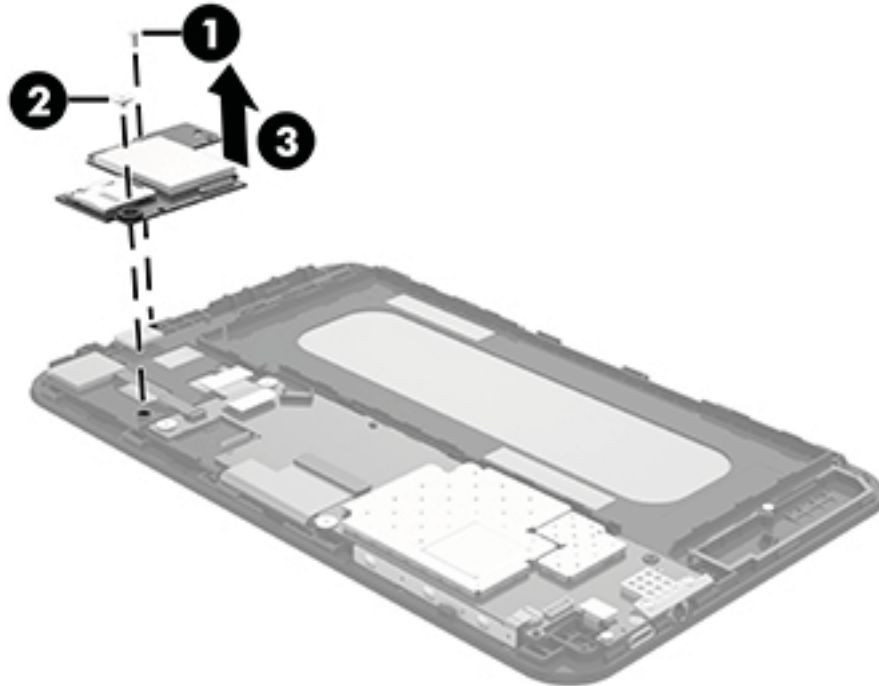
1. Turn off the tablet. If you are unsure whether the tablet is off or in Hibernation, turn the tablet on, and then shut it down through the operating system.
2. Disconnect the power from the tablet by unplugging the power cord from the tablet.
3. Disconnect all external devices from the tablet.
4. Remove the back cover (see [Back cover on page 12](#)).
5. Disconnect the battery cable from the system board (see [Battery on page 14](#)).

Remove the connector board:

1. Disconnect the antenna cable from the connector board antenna terminal (1).
2. Release the microphone (2) from the molding built into display panel assembly.
3. Disconnect the connector board cable (3) from the system board.
4. Release the zero insertion force (ZIF) connector (4) to which the TouchScreen cable is attached, and then disconnect the TouchScreen cable from the system board.



5. Remove the Phillips PM1.4×3.6 screw (1) and the Phillips PM1.4×2.2 broad head screw (2) that secure the connector board to the display panel assembly.
6. Remove the connector board (3).



Reverse this procedure to install the connector board.

## System board

Description	Spare part number
System board equipped with an Intel Z2520 1.20-GHz dual core processor, a graphics subsystem with UMA memory, and 1.0-GB of system memory	
Equipped with a 16-GB eMMC hard drive	790593-001
Equipped with a 8-GB eMMC hard drive	790592-001

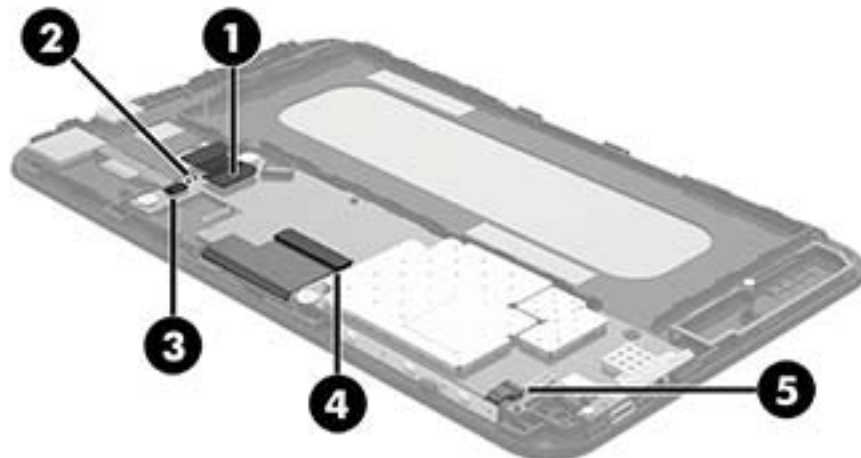
Before removing the system board, follow these steps:

1. Turn off the tablet. If you are unsure whether the tablet is off or in Hibernation, turn the tablet on, and then shut it down through the operating system.
2. Disconnect the power from the tablet by unplugging the power cord from the tablet.
3. Disconnect all external devices from the tablet.
4. Remove the back cover (see [Back cover on page 12](#)).

5. Disconnect the battery cable from the system board (see [Battery on page 14](#)).
6. Remove the speaker (see [Speaker on page 17](#)).

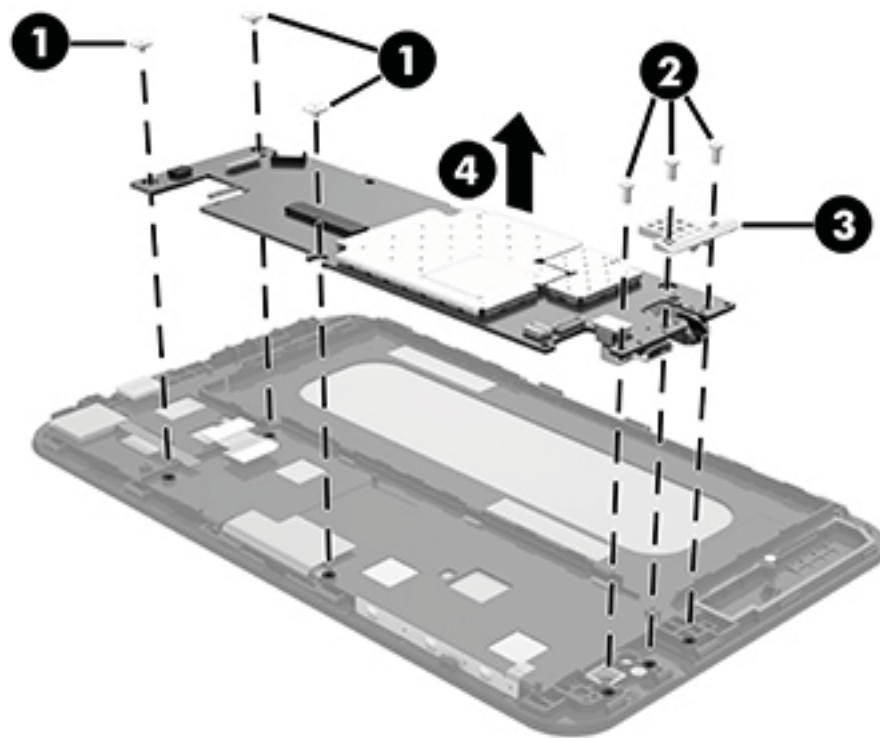
Remove the system board: [callout 5 IDing button board cable ZIF connector on system board]

1. Disconnect the following cables from the system board:
  - (1) Connector board cable (see [Connector board on page 21](#))
  - (2) Microphone cables (must be unsoldered, see [Microphone on page 20](#))
  - (3) TouchScreen cable ZIF connector on system board
  - (4) XRay cable ZIF connector on system board
  - (5) Power/volume button board cable ZIF connector on system board



2. Remove the three Phillips PM1.4×3.6 screws (1) that secure the system board to the display panel assembly.
3. Remove the three Phillips PM1.4×2.2 broad head screws (2) that secure the audio jack light pipe and system board to the display panel assembly.
4. Remove the audio jack light pipe (3).  
The audio jack light pipe is included with the ???.

5. Remove the system board (4).



Reverse this procedure to install the system board.

## Front-facing webcam

Description	Spare part number
Front-facing webcam (0.3-MP, fixed-focus, VGA; includes cable and double-sided adhesive)	790594-001

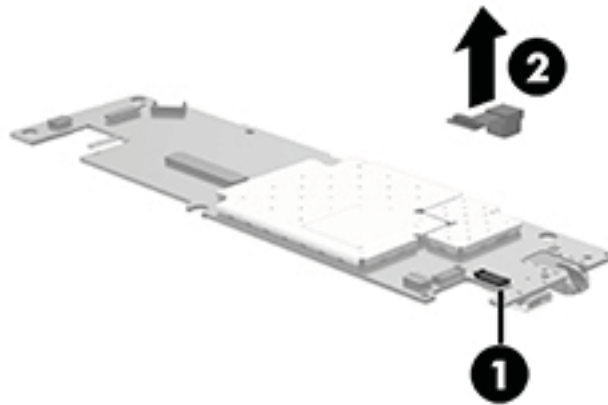
Before removing the front-facing webcam, follow these steps:

1. Turn off the tablet. If you are unsure whether the tablet is off or in Hibernation, turn the tablet on, and then shut it down through the operating system.
2. Disconnect the power from the tablet by unplugging the power cord from the tablet.
3. Disconnect all external devices from the tablet.
4. Remove the back cover (see [Back cover on page 12](#)).
5. Disconnect the battery cable from the system board (see [Battery on page 14](#)).
6. Remove the speaker (see [Speaker on page 17](#)).
7. Remove the system board (see [System board on page 22](#)).

Remove the front-facing webcam:

1. Disconnect the front-facing webcam cable (1) from the system board.

2. Detach the front-facing webcam (2) from the display panel assembly. (The front-facing webcam is attached to the display panel assembly with double-sided adhesive.)



3. Remove the front-facing webcam and cable.

Reverse this procedure to install the front-facing webcam.

# 6 Specifications

	Metric	U.S.
<b>Dimensions</b> (portrait orientation)		
Width	19.3 cm	7.6 in
Depth	11.7 cm	4.6 in
Height	0.9 cm	0.4 in
Weight (lowest weight configuration)	287 g	0.63 lb
<b>Input power</b>		
The tablet operates on DC power, which can be supplied by an AC or a DC power source. The AC power source must be rated 100-240 V, 50/60 Hz.		
<b>NOTE:</b> The tablet can operate on DC power using an industry-standard micro-B USB cable. The HP adapter included with the tablet is recommended for charging the tablet.		
<b>Temperature</b>		
Operating	5°C to 35°C	41°F to 95°F
Nonoperating	-20°C to 60°C	-4°F to 140°F
<b>Relative humidity</b> (non-condensing)		
Operating	10% to 90%	
Nonoperating	5% to 95%	
<b>Maximum altitude</b> (unpressurized)		
Operating	-15 m to 3,048 m	-50 ft to 10,000 ft
Nonoperating	-15 m to 12,192 m	-50 ft to 40,000 ft
<b>NOTE:</b> Applicable product safety standards specify thermal limits for plastic surfaces. The device operates well within this range of temperatures.		



# 7 Power cord set requirements

The wide-range input feature of the tablet permits it to operate from any line voltage from 100 to 120 volts AC, or from 220 to 240 volts AC.

The 3-conductor power cord set included with the tablet meets the requirements for use in the country or region where the equipment is purchased.

Power cord sets for use in other countries and regions must meet the requirements of the country or region where the tablet is used.

## Requirements for all countries

The following requirements are applicable to all countries and regions:

- The length of the power cord set must be at least 1.0 m (3.3 ft) and no more than 2.0 m (6.5 ft).
- All power cord sets must be approved by an acceptable accredited agency responsible for evaluation in the country or region where the power cord set will be used.
- The power cord sets must have a minimum current capacity of 10 amps and a nominal voltage rating of 125 or 250 V AC, as required by the power system of each country or region.
- The appliance coupler must meet the mechanical configuration of an EN 60 320/IEC 320 Standard Sheet C13 connector for mating with the appliance inlet on the back of the tablet.

## Requirements for specific countries and regions

Country/region	Accredited agency	Applicable note number
Australia	EANSW	1
Austria	OVE	1
Belgium	CEBC	1
Canada	CSA	2
Denmark	DEMKO	1
Finland	FIMKO	1
France	UTE	1
Germany	VDE	1
Italy	IMQ	1
Japan	METI	3
The Netherlands	KEMA	1
Norway	NEMKO	1
The People's Republic of China	COC	5
South Korea	EK	4

Country/region	Accredited agency	Applicable note number
Sweden	CEMKO	1
Switzerland	SEV	1
Taiwan	BSMI	4
The United Kingdom	BSI	1
The United States	UL	2

1. The flexible cord must be Type HO5VV-F, 3-conductor, 1.0-mm<sup>2</sup> conductor size. Power cord set fittings (appliance coupler and wall plug) must bear the certification mark of the agency responsible for evaluation in the country or region where it will be used.
2. The flexible cord must be Type SPT-3 or equivalent, No. 18 AWG, 3-conductor. The wall plug must be a two-pole grounding type with a NEMA 5-15P (15 A, 125 V) or NEMA 6-15P (15 A, 250 V) configuration.
3. The appliance coupler, flexible cord, and wall plug must bear a “T” mark and registration number in accordance with the Japanese Dentori Law. The flexible cord must be Type VCT or VCTF, 3-conductor, 1.00-mm<sup>2</sup> conductor size. The wall plug must be a two-pole grounding type with a Japanese Industrial Standard C8303 (7 A, 125 V) configuration.
4. The flexible cord must be Type RVV, 3-conductor, 0.75-mm<sup>2</sup> conductor size. Power cord set fittings (appliance coupler and wall plug) must bear the certification mark of the agency responsible for evaluation in the country or region where it will be used.
5. The flexible cord must be Type VCTF, 3-conductor, 0.75-mm<sup>2</sup> conductor size. Power cord set fittings (appliance coupler and wall plug) must bear the certification mark of the agency responsible for evaluation in the country or region where it will be used.

---

## 8 Recycling

When a non-rechargeable or rechargeable battery has reached the end of its useful life, do not dispose of the battery in general household waste. Follow the local laws and regulations in your area for battery disposal.

HP encourages customers to recycle used electronic hardware, HP original print cartridges, and rechargeable batteries. For more information about recycling programs, see the HP Web site at <http://www.hp.com/recycle>.

---

# Index

## A

AC adapter, spare part numbers 7  
antenna  
    removal 16  
    spare part number 5, 7  
Antenna Kit, spare part number 5, 7, 16  
audio, product description 1  
audio-in jack 3  
audio-out jack 3

## B

back cover  
    removal 12  
    spare part number 5, 6, 12  
battery  
    removal 14  
    spare part number 5, 6, 14  
buttons  
    power 2  
    volume control 3

## C

Cable Kit, spare part number 6  
cables, service considerations 8  
Card Reader slot 3  
connector board  
    removal 21  
    spare part number 5, 7, 21  
connectors, service considerations 8

## D

display panel assembly, spare part number 5, 6, 12  
display panel, product description 1

## E

electrostatic discharge 9  
equipment guidelines 11  
external expansion, product description 1

## F

front-facing webcam  
    location 3  
    removal 24  
    spare part number 5, 6, 24

## G

grounding guidelines 9  
guidelines  
    equipment 11  
    grounding 9  
    packaging 10  
    transporting 10  
    workstation 10

## H

headphone jack 3

## J

jacks  
    audio-in 3  
    audio-out 3  
    headphone 3  
    microphone 3

## M

mass storage device, product description 1  
memory module, product description 1  
microphone  
    location 3  
    product description 1  
    removal 20  
    spare part number 5, 7, 20  
microphone jack 3  
model name 1

## O

operating system, product description 1

## P

packaging guidelines 10

plastic parts, service considerations 8  
Plastics Kit, spare part number 6, 7

## ports

    product description 1  
    USB 2.0 3  
power adapter, spare part numbers 6  
power button 2  
power cord, set requirements 27  
power requirements, product description 1  
processor, product description 1  
product description  
    audio 1  
    display panel 1  
    external expansion 1  
    mass storage 1  
    memory module 1  
    microphone 1  
    operating system 1  
    ports 1  
    power requirements 1  
    processors 1  
    product name 1  
    sensor 1  
    serviceability 1  
    video 1  
    wireless networking 1  
product name 1

## R

rear-facing webcam  
    location 2  
    removal 19  
    spare part number 5, 7, 19  
Rubber Kit, spare part number 6, 7

## S

Screw Kit, spare part number 6  
sensor, product description 1  
service considerations  
    cables 8

- connectors 8
- plastic parts 8
- serviceability, product
  - description 1
- SIM slot 3
- speaker
  - location 3
  - removal 17
  - spare part number 5, 6, 17
- system board
  - removal 22
  - spare part numbers 5, 6, 22

## T

- tablet
  - major components 5
  - spare part numbers 6, 7
  - specifications 26
- tools required 8
- transporting guidelines 10

## U

- USB 2.0 port 3
- USB extension cable, spare part number 6, 7

## V

- video, product description 1
- volume control buttons 3

## W

- webcam
  - location 2, 3
  - removal 19, 24
  - spare part numbers 5, 6, 7, 19, 24
- wireless networking, product description 1
- workstation guidelines 10