

lenovo[®]

Lenovo A526

Quick Start Guide v1.0



Read this guide carefully before using your phone.

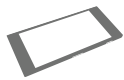
Technical specifications



Model and system

Model: Lenovo A526

System: Android 4.2.2



① Size and weight

Height: 132 mm Width: 67.6 mm Depth: 11.1 mm

Weight: 145 g



CPU

CPU: MT6582M Quad Core 1.3GHz



Camera

Type: CMOS

Pixels: 5.0 MP (back) + 0.3 MP (front)



Power and battery

Battery: 2000 mAh



Display

Size: 4.5" FWVGA

Resolution: 854 × 480

Screen: 1 point touch

LCD type: TN



Wireless communication

② Bluetooth 4.0

WLAN

WCDMA, GSM, EDGE



GPS



① Based on actual measurements.

② Launch with Android 4.2 which only supports BT 4.0 PXP profile.

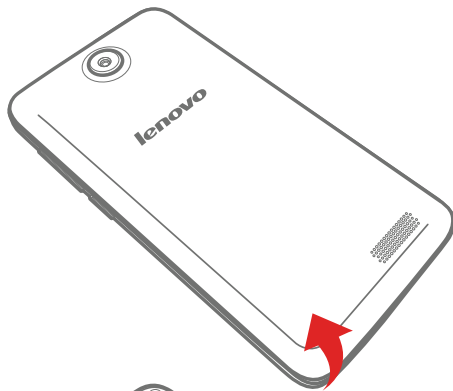
First glance



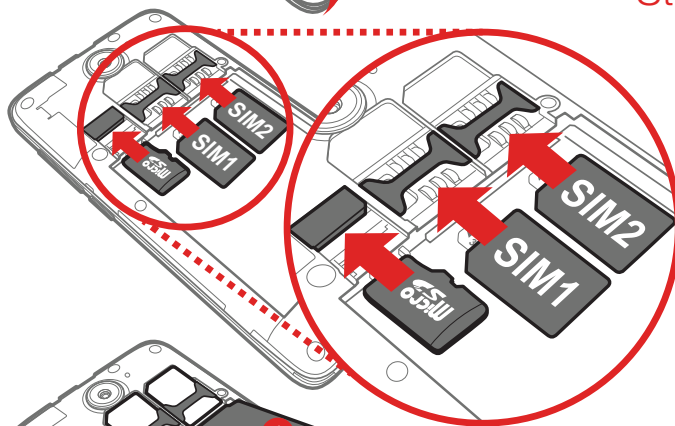
- | | | |
|-----------------|----------------|-----------------|
| 1 Receiver | 2 Front camera | 3 Volume key |
| 4 On/Off button | 5 Back button | 6 Microphone |
| 7 Home button | 8 Menu button | 9 Earphone jack |
| 10 Micro USB | 11 Back camera | 12 Speaker |

Preparing your phone

You need to insert the SIM card provided by your carrier to use cellular services. Install your phone as shown.

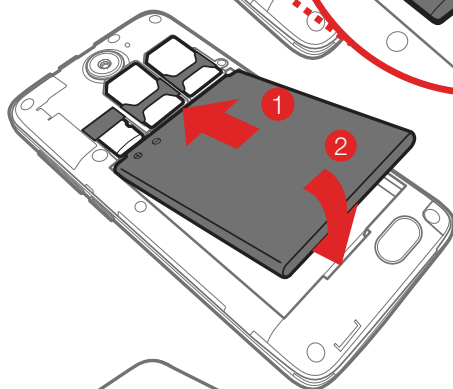


Step 1. Open the back cover.

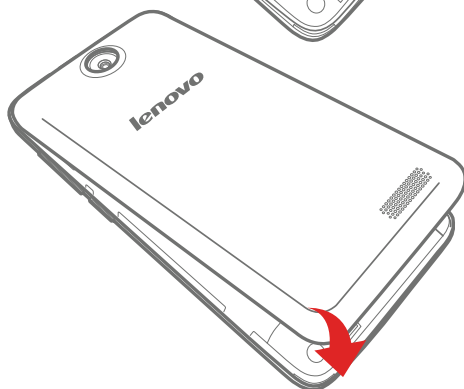


Step 2. Insert the SIM cards and the memory card.

Tip: Insert (U)SIM card into SIM 1 slot and SIM card into SIM 2 slot.



Step 3. Install the battery.



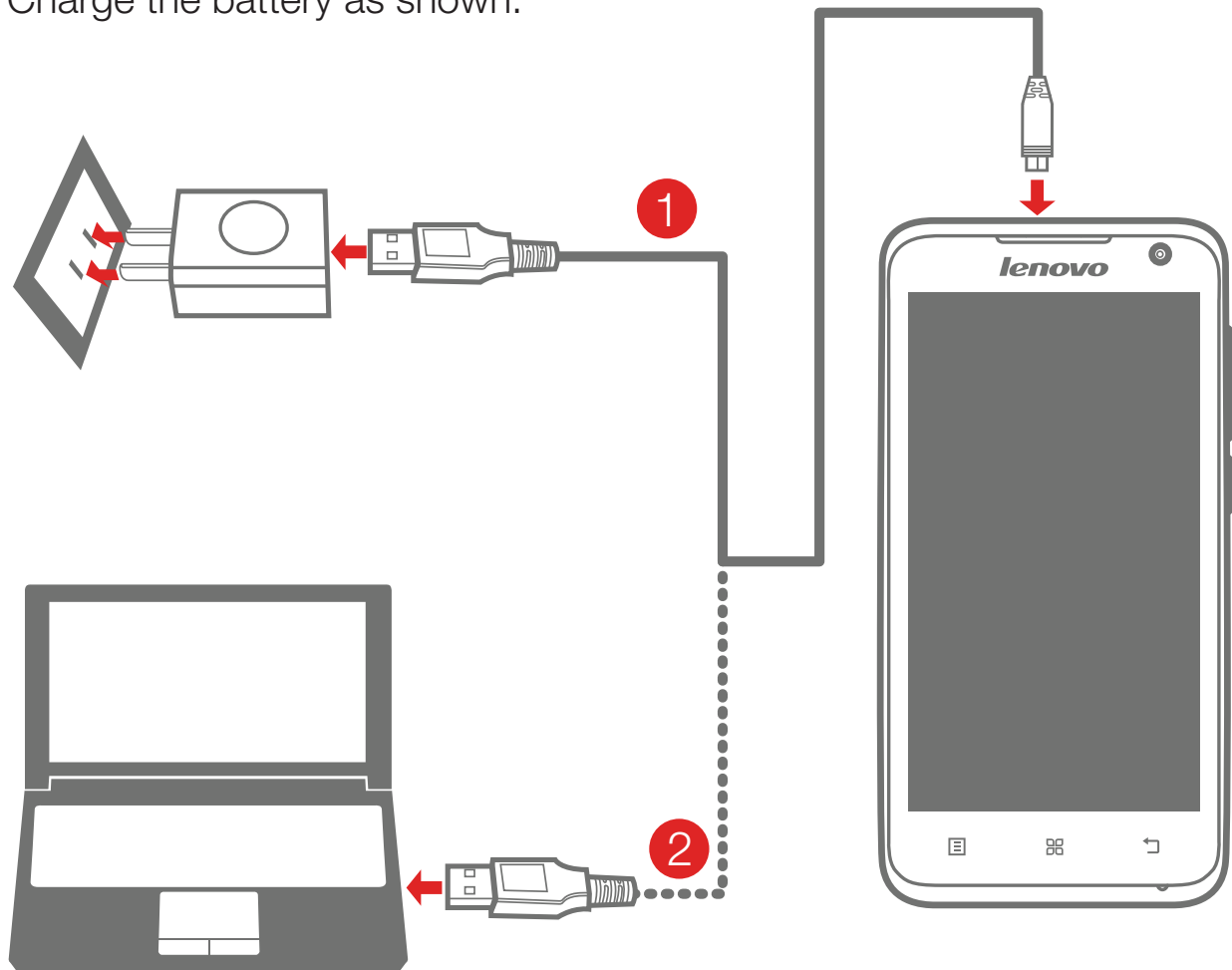
Step 4. Install the back cover.



DO NOT insert or remove the SIM cards while your phone is turned on. Doing so can permanently damage your SIM card or your phone.


Charging the battery

Charge the battery as shown.



Method 1. Connect your phone to a power outlet using the included cable and USB power adapter.

Method 2. Charge the battery using a computer.

 Low battery

 Fully charged

 Charging

 For more information about battery safety, see the **Important Product Information Guide**.

Learn more

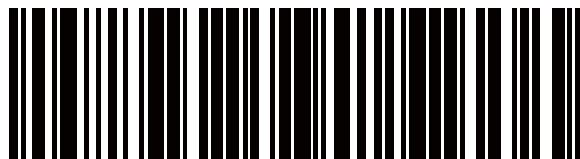
For more information about Lenovo Mobile Phone functions, Regulatory Notices and other useful manuals, go to <http://support.lenovo.com/>.

Legal notices

Lenovo and the Lenovo logo are trademarks of Lenovo in the United States, other countries, or both. Other company, product, or service names may be trademarks or service marks of others.

First Edition (January 2014)
© Copyright Lenovo 2014.

Reduce | Reuse | Recycle



8306LV8001W

Printed in China