



Lenovo A5000

Quick Start Guide v1.0



Read this guide carefully before using your smartphone.

Technical specifications



Model and system

Model: Lenovo A5000

System: Android



①Dimensions and weight

Height: 140 mm (5.5 inches)

Width: 71.4 mm (2.8 inches)

Depth: 9.98 mm (0.39 inch)

Weight: 155.9 g (0.3 lb)



Processor

Processor: MTK MT6582, Quad Core, 1.3 GHz



Camera

Type: CMOS

Pixels: 8 megapixels (back) + 2 megapixels (front)



Battery

Battery: 4000 mAh



Display

Size: 5 inches

Screen: multi-touch

Resolution: 1280 × 720 pixels

LCD type: IPS



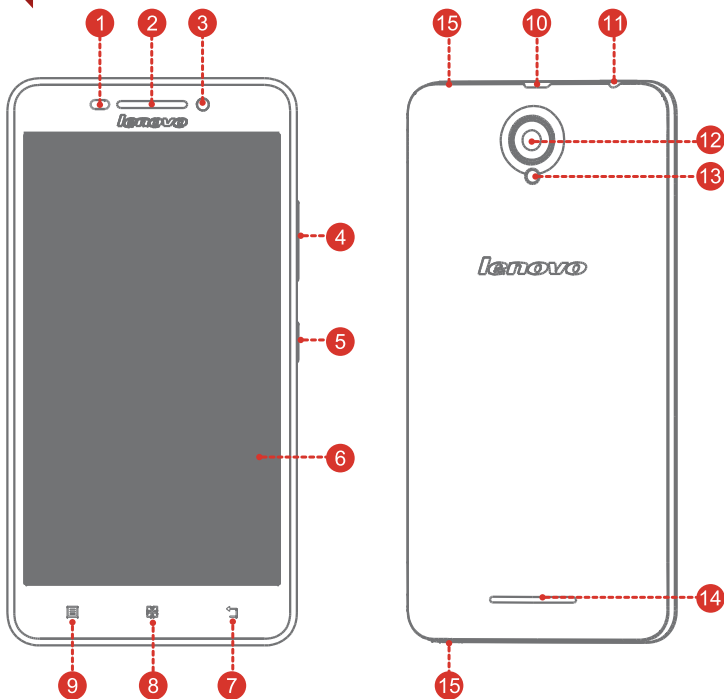
Wireless Communication

Bluetooth 4.0; WLAN 802.11 b/g/n; WCDMA, GSM; GPS



① Depending on the measuring method, the dimensions and weight might vary slightly.

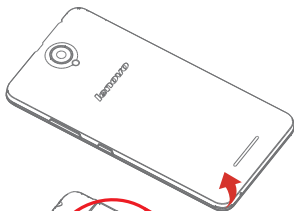
First glance



- | | | |
|--------------------------|----------------------|-----------------------|
| 1 Light/Proximity sensor | 2 Receiver | 3 Front-facing camera |
| 4 Volume buttons | 5 On/Off button | 6 Touch screen |
| 7 Back button | 8 Home button | 9 Menu button |
| 10 Micro USB connector | 11 Headset connector | 12 Rear-facing camera |
| 13 Flashlight | 14 Speaker | 15 Microphone |

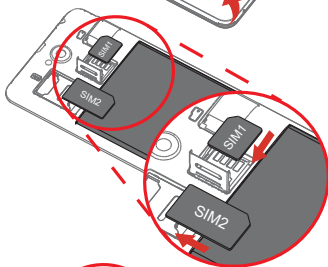
Preparing your smartphone

You must insert the SIM card provided by your carrier to use cellular services. Set up your smartphone as shown.



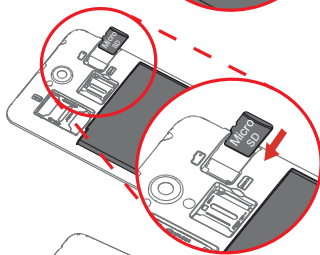
Step 1. Open the back cover.

Tip: The battery is unremovable, and is fixed to the phone. Please do not pull the battery, otherwise it will damage the phone.



Step 2. Insert the (U)SIM cards.

Tip: Insert the (U)SIM card into SIM1 slot and SIM card into SIM2 slot.



Step 3. Insert the memory card.



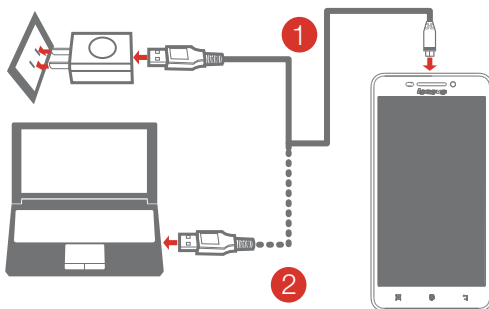
Step 4. Install the back cover.



Always turn off your smartphone first before you insert or remove a SIM card. Insert or remove a SIM card with your smartphone on may damage your SIM card or smartphone permanently.

Charging the battery

Charge the battery as shown.



Method 1. Connect your smartphone to a power outlet using the cable and USB power adapter that come with your smartphone.

Method 2. Connect your smartphone to a computer using the cable that comes with your smartphone.

 Low battery power

 Fully charged

 Charging

Turning on or turning off your smartphone



Turn on: Press and hold the On/Off button until the Lenovo logo appears.

Turn off: Press and hold the On/Off button for a few seconds, then tap **Power off**.

 Your smartphone has a rechargeable battery. For more information about battery safety, see the “Rechargeable battery notice” in the *Important Product Information Guide* shipped with your smartphone.