

GiONEE

S5.1

User Guide



Disclaimer: The colors, specifications, functions and graphics shown/mentioned in the user manual may differ from the actual product. In such a case, the latter shall govern. Images shown are for representation purpose only. Specifications are subject to change without prior notice. GiONEE keeps the right to modify the content in this user guide without prior notice.

Contents

1. For your safety	3
2. Learn about the phone	6
3. Before using	7
4. Getting started.....	9
4.1 Turn on/off your phone.....	9
4.2 Getting to know the Home screen.....	9
4.3 Using the touch screen	10
4.4 Customizing the Home screen.....	12
4.5 Connect to network.....	12
4.6 Input text.....	13
5. Communication	15
5.1 Make a call.....	15
5.2 Messaging	16
6. Multimedia.....	17
6.1 Camera.....	17
6.2 View albums	19
6.3 Music	20
7. Connecting to networks and devices.....	21
7.1 WLAN	21

7.2 Bluetooth.....	22
7.3 Connecting to a computer via USB.....	23
8. Health and safety	24
9. FAQ.....	28



1. For your safety

Read these simple guidelines. Not following them may be dangerous or illegal.



SWITCH OFF IN HOSPITALS

Please abide by relevant provisions or regulations. Please turn off your mobile phone near medical equipment.



SWITCH OFF WHEN REFUELING

Don't use the phone at a refueling point. Don't use near fuel or chemicals.



SIM CARDS AND T-FLASH CARD ARE PORTABLE

Keep your phone, phone parts and accessories out of children's reach.



BATTERY

Please do not destroy or damage the battery, it can be dangerous and cause fire.

Please do not throw battery in fire to avoid hazard.

When battery cannot be used, please dispose in safe environment.

Do not try to dismantle the battery.

If the battery or the charger is broken or old, please stop using them, and replace with certified genuine battery



USE QUALITY EQUIPMENT

Use GIONEE authorized equipment to avoid danger



ROAD SAFETY COMES FIRST

Give full attention while driving, Park before using your phone. pls follow traffic rules of local city/town.



INTERFERENCE

All wireless devices may be susceptible to cause interference, which could affect performance.



SWITCH OFF IN AIRCRAFT

Wireless devices can cause interference in aircraft. It's not only dangerous but also illegal to use mobile phone in an aircraft.

2. Learn about the phone

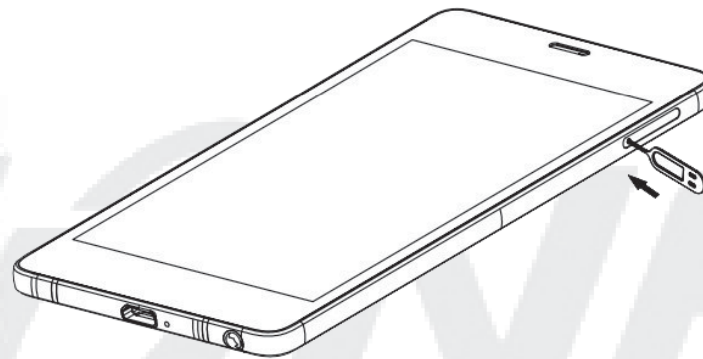
Button	Function
Power key (Left side of the phone)	a) Press to Turns on/off the screen. b) Press and Hold Opens a menu with options for airplane mode, powering off the phone, Reboot the phone and change audio profile.
Volume Up/Down (Right side of the phone)	a) Press when call is in progress, increase or decrease the volume, when the phone is ringing, silences the ringer. On the home screen when no call in progress, increase or decrease the ringtone volume or sets the phone to the silent instead of ringing. In other applications, controls the volume of music, spoken directions and other audio. b) Press and hold to quickly increasing ringtone volume to maximum or minimum.

IMPORTANT

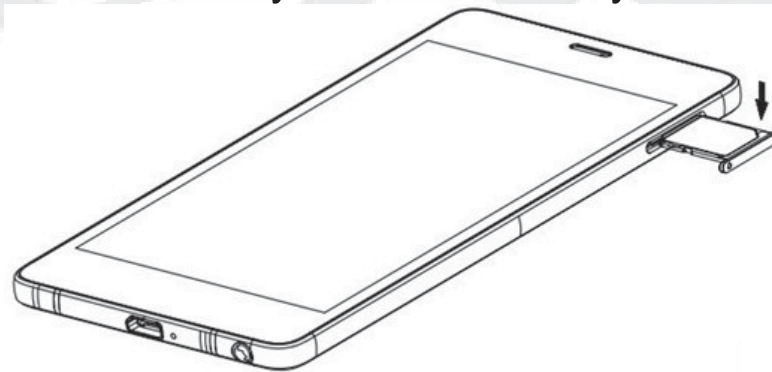
The battery of S5.1 mobile phone is fixed, not removable.

3. Before using

1. Use the hook tip of the metallic gear that comes inside your gift box to open the SIM slot.



2. Insert the Micro-SIM card correctly in Micro-SIM tray.



3. Push the Micro-SIM tray into the card slot.

Note1: The phone supports Hot Plug.

Note2: The Micro-SIM card is a small object; please keep the card out of the reach of children to avoid swallowing the card by accident. Do not touch the metal surface of Micro-SIM card and keep it away from electromagnetic field to avoid loss and damage of the data. You will not be able to connect to the network if the Micro-SIM card is damaged.

Charger

1. Connect the charger to the charger jack on the phone.
2. Next connect the charger to a power socket, the charging starts, with the charging icon in an animated state.
3. When the charging icon becomes static, it indicates that the battery is full.
4. Disconnect the charger from the power socket and the phone.

Note: Slight heating during charging is normal. It indicates that the battery is full, when the charging icon becomes static.

4. Getting started

4.1 Turn on/off your phone

- Turn on the phone
Long press the **power key** to start up the cell phone.
- Turn off the phone
 1. Long press the **power key**, a context menu will prompt, touch “**Power off**” to switch off the cell phone.
 2. Long press the **power key** 10 seconds to reboot the cell phone when the handset got hang options.

4.2 Getting to know the Home screen

The Home screen is your starting point to access all the features on your phone. It displays application icons, and other features. You can customize the Home screen with different wallpaper and display the items you want.



At the top of the screen, the Status bar displays the time, information about the status of your phone, and icons for notifications that you've received.

4.3 Using the touch screen

The main way to control Android features is by using your finger to touch icons, buttons, menu items, the onscreen keyboard, and other items on the touch screen.

- **Touch:** To act on items on the screen, such as application and settings icons, to type letters and symbols using the onscreen keyboard, or to press onscreen buttons, you

simply touch them with your finger.

- **Touch & hold:** Touch & hold an item on the screen by touching it and not lifting your finger until an action occurs. For example, to open a menu for customizing the Home screen, you touch an empty area on the Home screen until the menu opens.
- **Drag:** Touch & hold an item for a moment and then, without lifting your finger, move your finger on the screen until you reach the target position. You drag items on the Home screen to reposition them and you drag to open the Notification panel.
- **Swipe or slide:** To swipe or slide, you quickly move your finger across the surface of the screen, without pausing when you first touch (so you don't drag an item instead). For example, you slide the screen up or down to scroll a list, and in some Calendar views you swipe quickly across the screen to change the range of time visible.
- **Double-tap:** Tap quickly twice on a webpage, map, or other screen to zoom. For example, you can double-tap a section of a webpage in Browser to zoom that section to fit the width of the screen. You can also double-tap to control the Camera zoom, In Maps, and in other applications, Double-tapping after pinching to zoom in some applications, such as browser, reflows a column of text to fit the width of the screen.
- **Pinch:** In some applications (Such as Maps, Browser, and Gallery) you can zoom in and out by placing two fingers on the screen at once and pinching them together (to zoom out) or spreading them apart (to zoom in).
- **Rotate the screen:** On most screens, the orientation of the screen rotates with the phone as you turn it from upright to its side and back again. You can turn this feature on and off.

4.4 Customizing the Home screen

To add items to the Home screen

Enter the main menu, touch & hold the icon of an application, then the application will be added to the Home screen.

To move an item on the Home screen

1. Touch & hold the item you want to move. Don't lift your finger.
2. Drag the item to a new location on the screen. Pause at the edge of the screen to drag the item onto another screen pane.
3. When the item is where you want it, lift your finger.

To remove an item from the Home screen

1. Touch & hold the item you want to remove. Don't lift your finger. The top of the screen will appear "Remove".
2. Drag the item to the "Remove" icon.
3. When the icon turns red, lift your finger.

4.5 Connect to network

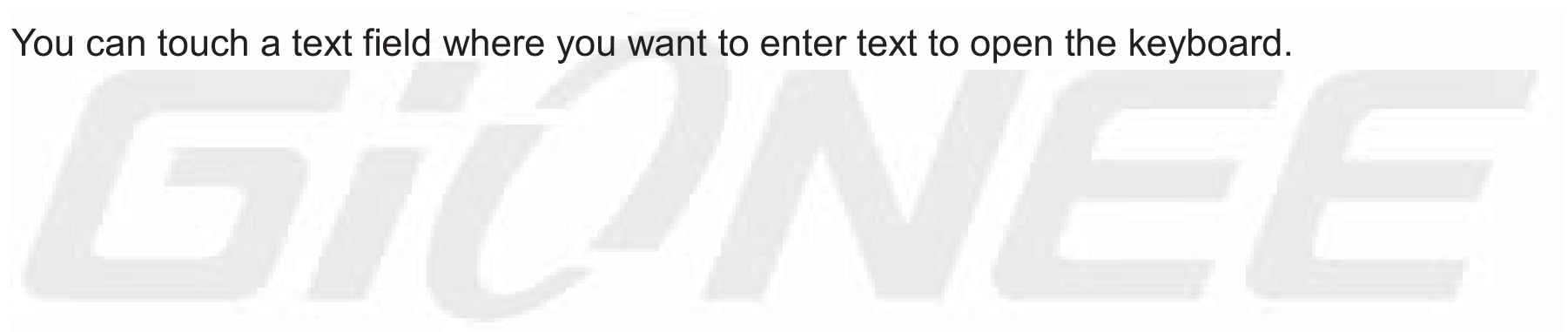
When you assemble your phone with a SIM card from your wireless service provider, your

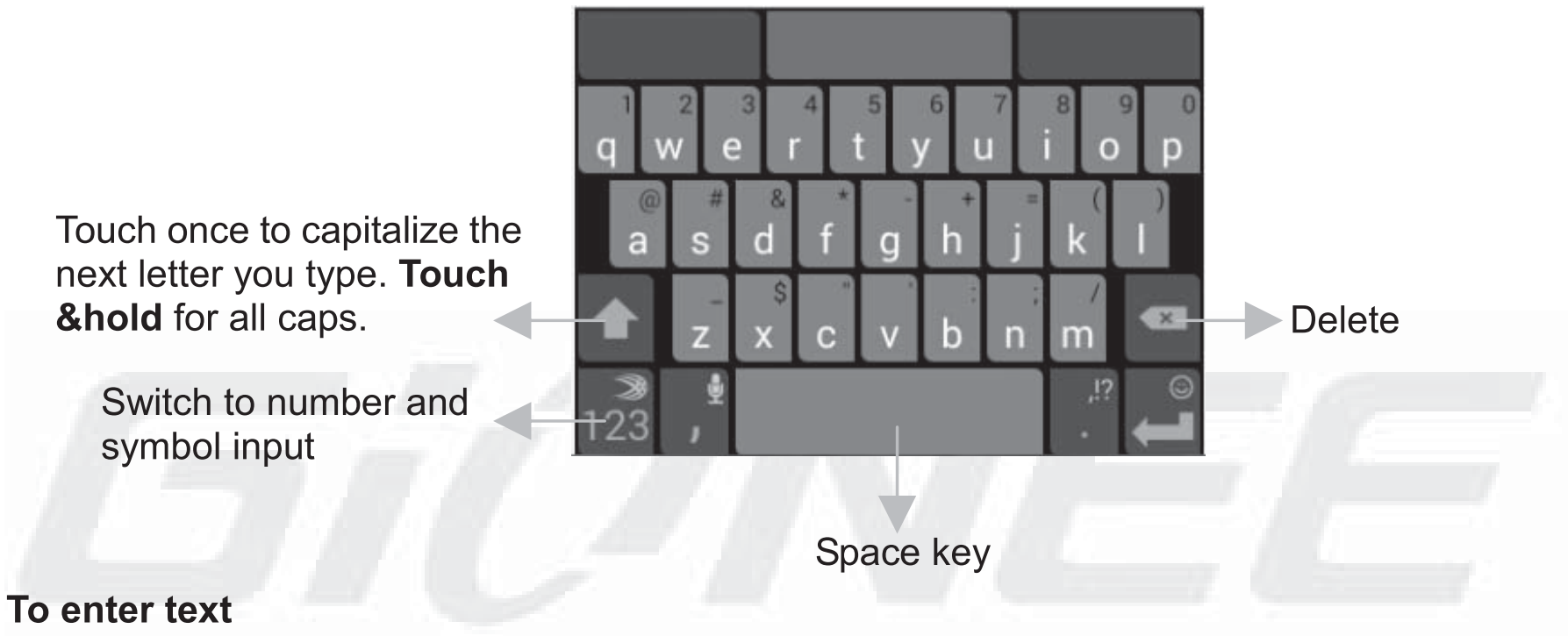
phone is configured to use your provider's mobile networks for voice calls and for transmitting data.

- **Settings-->All settings-->Mobile networks-->Data connection;** the name of the wireless service provider you're currently registered with is selected in the list.


4.6 Input text

You can touch a text field where you want to enter text to open the keyboard.





To enter text

- Touch a text field, the onscreen keyboard opens.
- Touch the keys on the keyboard to type; the characters you've entered appear in a strip above the keyboard. With suggestions for the word you are typing to the right. Press space to enter the highlighted suggested word.
- Use the Delete key  to erase characters to the left of the cursor.
- When you're finished typing, Press Back to close the keyboard.

5. Communication

5.1 Make a call

- * Touch the phone icon on the Home screen.
- * Enter the phone number you want to dial;
- * Touch the phone icon to dial the number that you entered. You can select voice call.





5.2 Messaging

You can use this phone to exchange text messages and multimedia messages with your friends on their mobile phones. The messages come to and from the same contact or phone number will be visible into a single conversation, so you can see your entire message history with a person conveniently.

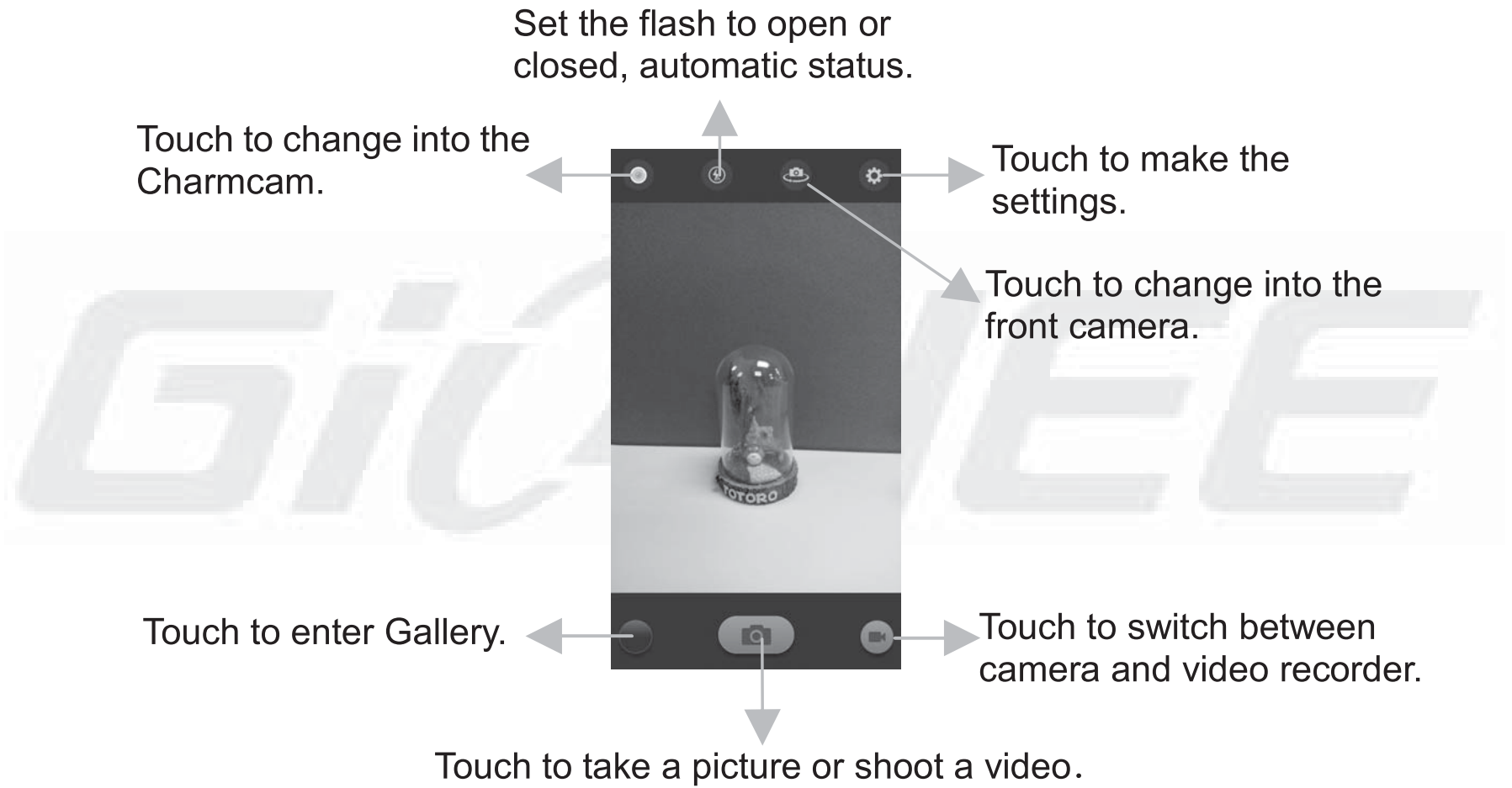
6. Multimedia

6.1 Camera

Camera is a combination of camera and camcorder that you use to shoot and share pictures and videos.

6.1.1 Take a picture





- Adjust your exposure and other settings if you wish. Or leave them on automatic.
- Frame your subject on screen.
- Touch the Shutter icon on screen.

6.1.2 To shoot a video

- If necessary, drag the control to the video position.
- Adjust the quality and other settings if you wish. Or leave them on automatic mode.
- Point the lens to frame the scene where you want to start.
- Touch the Start Video icon. Camera starts shooting the video.
- Touch Stop video icon to stop shooting. An image from your most recent video is displayed as a thumbnail at the bottom Left.

6.2 View albums

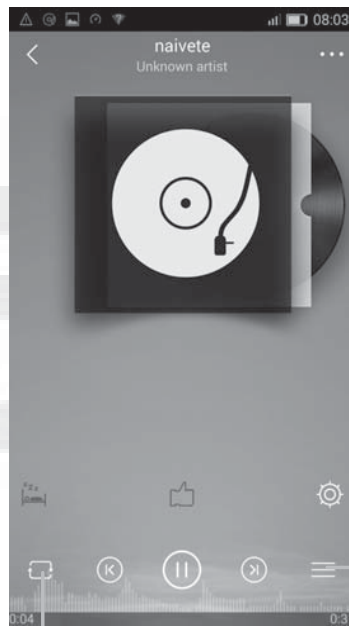
Touch the Gallery icon in the Launcher to view albums of your pictures and videos. Gallery presents the pictures and videos on your phone, including those you've taken with Camera and those you downloaded from the web or other locations.

You can do the following operations:

- To share pictures: You can share your pictures through MMS, Bluetooth, and so on.
- To delete pictures: You can delete the pictures you are viewing.
- To get details about the picture: You can view more details about the picture.

6.3 Music

You use Music player to organize and listen to music and other audio files that you transfer to your phone from your computer.



→ Current Playlist

↓ Touch to Single Play, the repeat play , Random Play or NO Repeat.

7. Connecting to networks and devices

Your phone can connect to a variety of networks and devices, including mobile networks for voice and data transmission, WLAN data networks, and Bluetooth devices, such as headsets. You can also connect your phone to a computer, to transfer files from your phone storage, and share your phone's mobile data connection via USB or as a portable WLAN hotspot.

7.1 WLAN

WLAN is a wireless networking technology that can provide internet access at distance of up to 100 meters, depending on the WLAN router and your surroundings. You can configure the WLAN as follow:

- **Settings--> WLAN**, check **WLAN** to turn it on.
- Enter **WLAN**. The phone scans for available WLAN networks and displays the names of those it finds. Secured networks are indicated with a Lock icon. If the phone finds a network, you connected previously, It connects to it.
- Touch a network to connect to it.
If the network is open, you are prompted to confirm that you want to connect to that network by touching connect. If the network is secured, you're prompted to enter a password or other credentials.

7.2 Bluetooth

Bluetooth is a short-range wireless communications technology that devices can use to exchange information over a distance of about 10 meters. The most common Bluetooth devices are headphones for making calls or listening to music, hands-free kits for cars , and other portable device, including laptops and cell phones.

7.2.1 To send a file

- **Settings--> Bluetooth**, check **Bluetooth** to turn it on.
- Enter **File Explorer** to select a file, Select **Share--> Bluetooth**.
- Touch **Scan for devices**, the phone will scan for and display the names of all available Bluetooth devices in range.
- Touch the names of the other device in the list to pair them. After paired the file will be sent.

7.2.2 To receive a file

- **Settings--> Bluetooth**, check **Bluetooth** to turn it on. Ensure your Bluetooth has been connected within visibility time
After paired, the phone will receive the file. The file you received will be saved to the “Bluetooth” folder in the Phone Storage

7.2.3 To connect to a Handsfree device

- **Settings--> Bluetooth**, Select **“Search for devices”**;
- Turn on the Handsfree device, Select the Handsfree device in the list to pair.

- After paired, you can use the Handsfree device to listen to music and receive call.

7.3 Connecting to a computer via USB

You can connect your phone to a computer with a USB cable, to transfer music, pictures, and other files between your phone and the computer.

When connecting your phone to a computer, you must follow your computer's instructions for connecting and disconnecting USB devices, to avoid damaging or corrupting the files on your phone.


You can't share your phone's data connection and phone's storage via USB cable at the same time. If you are using USB tethering, you must turn that off first.

7.3.1 To connect your phone to Interim USB debugging.

1. Use the USB cable that came with your phone to connect the phone to a USB port on your computer.
2. Touch **USB connection** in the screen that opens to confirm that you want to transfer files. When the phone is connected as USB storage, the screen indicates that USB storage is in use and you receive a notification. Your phone is mounted as a drive on your computer. You can now copy files to or from the phone
During this time, you can't use applications that rely on the phone such as camera, Gallery, and Music.

7.3.2 To disable phone calls (Airplane mode)

Some locations may require you to turn off your phone's mobile, WLAN, and Bluetooth wireless connections. You can turn off all these wireless connections at once by placing your phone in Airplane mode.

1. Press & hold the **Power** button
2. Touch “  ”

8. Health and safety

Please read these simple guidelines. Not following them may be dangerous or illegal.

SAR Compliance

Your phone is designed not to exceed the limits of emission of radio waves recommended by international guidelines.

SAR (specific absorption rate) is the measurement of body-absorbed RF quantity when the phone is in use. SAR value is ascertained according to the highest RF level generated during laboratory tests.

The SAR value of the phone may depend on factors such as proximity to the network tower, use of accessories and other enhancements.

The true SAR level during normal phone usage will be much lower than this level.

The highest SAR value of this device at the head and body are 0.183w/kg and 0.597w/kg; Respectively averaged over 1.5cm gap of human tissue.

SAR Recommendations

Use a wireless hands-free system (headphone, headset) with a low power Bluetooth emitter. Please keep your calls short and use SMS whenever more convenient. This advice applies especially to children, adolescents and pregnant women

Make sure the cell phone has a low SAR.

Prefer to use your cell phone when the signal quality is good.

People having active medical implants should preferably keep the cell phone at least 15 cm away from the implant.

Maintain a preferable distance of 15 mm from the device.

Safe Driving

Do not use the phone while driving. When you have to use the phone, please use the personal hands-free kit.

Please do not put the phone onto any passenger seat or any place from which it may fall down in case of vehicular collision or emergency braking.

During Flight

Flight is influenced by interference caused by the phone. It is illegal to use a phone on the airplane. Please turn off your phone during a flight.

In Hospitals

Your Phone's radio waves may interfere with the functioning of inadequately shielded medical

devices. Consult a physician or the manufacturer of the medical device to determine whether they are adequately shielded from external Radio Frequency. Switch off your device when regulations posted instruct you to do so.

To avoid potential interference with implanted medical devices such as a pacemaker or cardioverter defibrillator:

Always keep your phone at least 15.3 centimeters (6 inches) from the medical device.

Do not carry the wireless device in a breast pocket.

Turn off the phone if there is any reason to suspect that interference is taking place.

Follow the manufacturer directions for the implanted medical device.

If you have any questions about using your wireless device with an implanted medical device, consult your health care provider.

Unsafe Areas

Please turn off your phone when you are close to a gas station or in the vicinity of any place where fuel and chemical preparations, or any other dangerous goods are stored.

E-Waste

INFORMATION UNDER E-WASTE (MANAGEMENT AND HANDLING) RULES, 2011

For disposal of e-waste, please call our helpline no: 1800 208 1166

or visit our website: <http://gionee.co.in/social/>

1. Do's for disposal of product

- a) Always drop your used electronic products, batteries, and packaging materials after the end of their life in nearest collection point or collection center
- b) Separate the packaging material according to responsible waste disposal options

and sorting for recycling.

c) The battery can easily be removed from the product for recycling.

2. Don't for disposal of equipment

a) Never dump E-waste in garbage bins or municipal solid waste stream.

b) Do not dispose of your product as unsorted municipal waste.

c) Do not throw used batteries into household waste.

d) Do not dispose damaged or leaking Lithium Ion (Li-Ion) battery with normal household waste.



3. Information on the consequences of improper handling, accidental breakage damage and improper recycling of the end of life product.

a) If batteries are not properly disposed of, it can cause harm to human health or the environment.

b) Placing of batteries or devices on or in heating devices, such as microwave ovens, stoves, or radiators and improper disposal of batteries may lead to explosion.

If the battery terminals are in contact with metal objects, it may cause a fire.

9. FAQ

S.No.	FAQ	Answers
1	How to Add and Remove account in Android?	Main Menu -> Settings ->All settings->Add Account-a/b a) To add an Account: Add Credential to add account b) To remove an Account: Select account that you need to remove->Option->Remove account
2	How to Factory Reset Android phone?	Main Menu -> Settings ->All settings->Backup & reset -> Factory data reset ->Reset phone. From there, Select Erase Phone storage for best result. Note: Reset Factory default will remove all user data; do take a backup of your data in PC or on Gmail.
3	In what scenario does the user have to factory reset the android phone?	In the following scenarios user needs to reset his phone. a) Phone not responding b) Phone automatically Restarting c) Erratic behavior of phone d) Bad Battery backup or charging issues e) Apps not working f) Deleted any pre-installed apps by mistake g) Erased customer data & settings h) To remove a account. Note: If the problem persists, please visit your nearest Service Center.

4	How to connect device via USB tethering?	Please follow the following steps. a) Plug in USB cable and connect it to your PC. b) In the Main Menu of Phone -> Settings -> All settings -> More wireless -> ->More -> Select USB Internet . Let the PC install the drivers first and after that you will be connected to the Internet automatically. You can download the driver from our Website: http://gionee.co.in
5	How to connect device via portable hotspot?	Please follow the following steps. a) Plug in your USB cable and connect it to PC. b) From Main Menu in Phone-> Settings -> All settings -> More wireless -> More-> Tethering &portable hotspot->Select USB tethering. Let it install all the driver first and after that you will be connected to Internet automatically. Drivers can be downloaded from our Website
6	How to connect your device as USB mass storage?	Please follow the following steps. a) Plug in USB cable and connect it to PC. b) Select File copy . Let all the drivers install first and then your Device will be connected as a USB Mass Storage. Drivers can be downloaded from our web site

7	How to add Data Account or APN settings?	All Gionee Smartphones come with Pre-loaded Internet Settings. User needs to insert SIM and turn the Data Connectivity On. The phone will automatically detect settings.
8	How to do Data account or APN setting if user has edited or erased pre-installed data settings?	There are two ways to resolve it. A) Do Reset Factory Default Setting. B) Main Menu->Settings->All settings->Mobile Networks->Access Point Names-> Add or Edit APN settings
9	How to select Data mode (Auto or GSM or WCDMA) ?	Main Menu->Settings->All settings->Mobile networks-> Network Mode-> Select Mode as per your need from 2G/3G (auto)/3G only/2G Only.
10	How to switch off roaming reminder While originating call?	Main Menu->Settings->All settings->Roaming reminder-Show roaming reminder-> Never.
11	How to change GPS settings to achieve better accurate results?	Please follow the listed steps. Main Menu -> Settings ->All settings -> Location ->Turn on GPS satellites and WLAN and mobile network location.

12	How to reboot or reset to factory settings?	Power the phone off->Hold Volume up + Power-> Select the option based on your requirement
13	How to install applications that are not downloaded from google playstore?	To install applications directly, do following. Settings -> All settings -> Security ->DEVICE ADMINISTRATION-> Check "Allow installation of apps from unknown sources"
14	How to backup contacts and SMS?	(a) For Contact Backup (i) User can take backup on Gmail (ii) Main Menu->Contacts->...->Import/Export ->Select Source & Destination point to take backup. (b) For SMS Backup (i) User can take backup on Gmail (ii) Main Menu->Messaging->...->Import/Export SMS > Select Source & Destination point to take backup. On a device running Android User can take backup of Contacts, SMS, Call logs, Email, Calendar with following steps. Main Menu->Settings->All settings->System Backup

COPYRIGHT

All rights reserved. Reproduction, transfer, distribution or storage of part or all of the contents in this document in any form without the prior written permission of GIONEE is strictly prohibited.