

***lenovo***<sup>®</sup>

**Lenovo K910L**

**Quick Start Guide v1.0**



Read this guide carefully before using your phone.

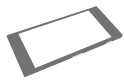
# Technical specifications



## Model and system

Model: Lenovo K910L

System: Android 4.3



## ① Size and weight

Height: 149 mm    Width: 77 mm    Depth: 7.9 mm

Weight: 147 g



## CPU and capacity

CPU: Qualcomm 8974 Quad core 2.2 GHz

Capacity: 16 GB



## Camera

Type: CMOS

Pixels: 13.0 MP (back) + 5.0 MP (front)



## Power and battery

Battery: 3000 mAh (Built-in battery)



## Display

Size: 5.5 inches

Resolution: 1080 × 1920

Screen: Multi-touch display

LCD type: IPS



## Wireless communication

Bluetooth 4.0

WLAN

WCDMA, GSM

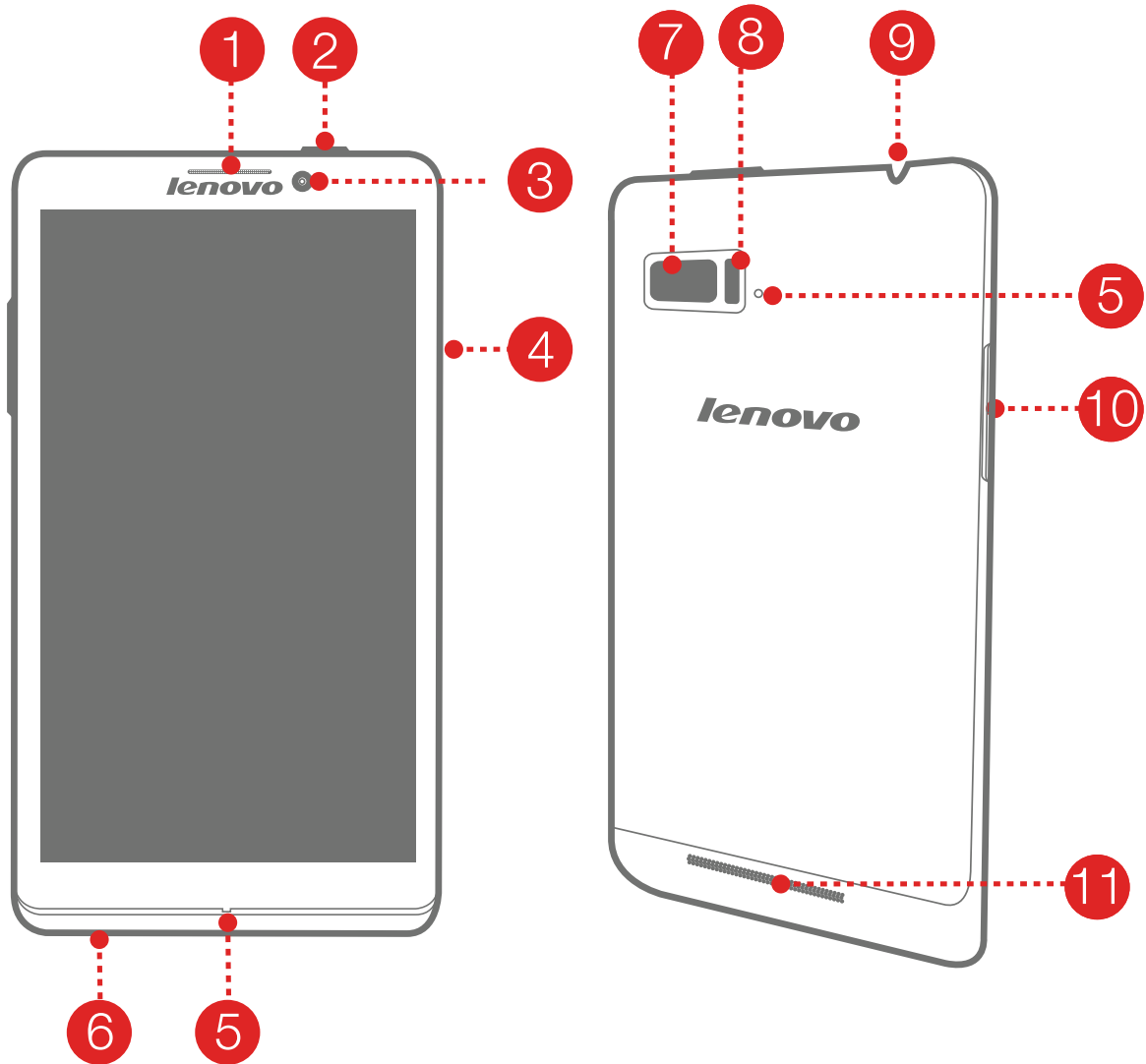


## GPS



① Based on actual measurements.

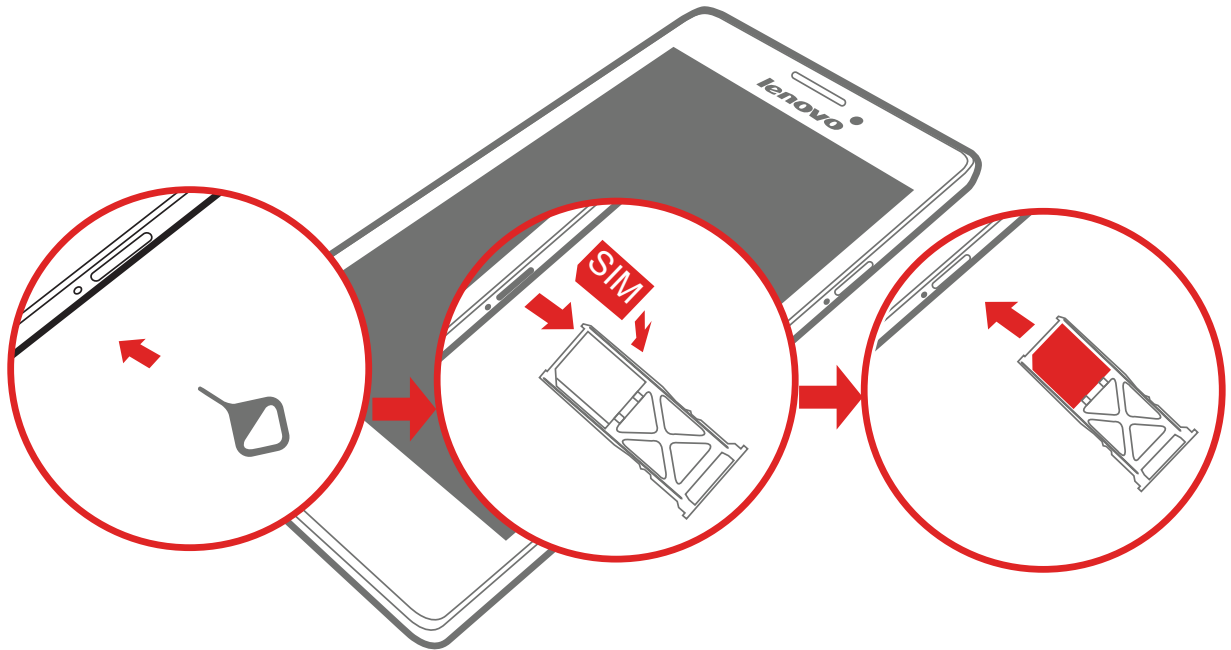
# First glance



- |                 |                |                 |
|-----------------|----------------|-----------------|
| 1 Receiver      | 2 Power on/off | 3 Front camera  |
| 4 SIM card slot | 5 Microphone   | 6 Micro USB     |
| 7 Back camera   | 8 Flashlight   | 9 Earphone jack |
| 10 Volume key   | 11 Speaker     |                 |

# Installing the Micro SIM card

A Micro SIM card provided by your carrier is required in order to use cellular services. Install the Micro SIM card as shown.

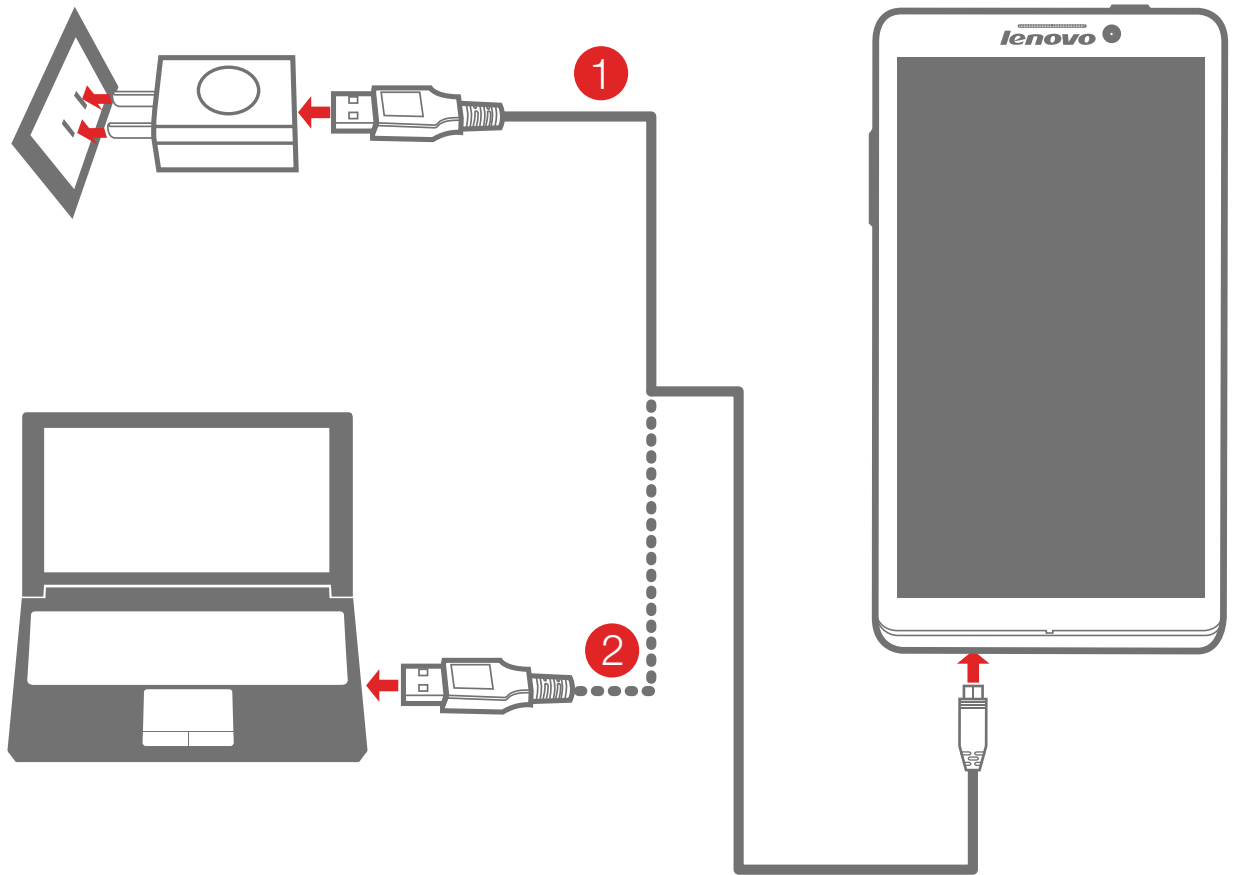


- Step 1.** Insert the Micro SIM eject tool into the hole on the Micro SIM card tray.
- Step 2.** Pull out the Micro SIM card tray and place the Micro SIM card in the tray.
- Step 3.** Carefully replace the tray.

- 🔧 Only Micro SIM cards work with your phone.  
DO NOT insert or remove the Micro SIM card while your phone is turned on. Doing so may permanently damage your Micro SIM card or phone.


# Charging the battery

Charge the battery as shown.



**Method 1.** Connect your phone to a power outlet using the included cable and USB power adapter.

**Method 2.** Charge the battery using a computer.

 Low battery

 Fully charged

 Charging

 For more information about battery safety, see the [Important Product Information Guide](#).

## Learn more

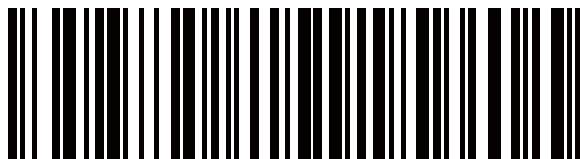
For more information about Lenovo Mobile Phone functions, Regulatory Notices and other useful manuals, go to <http://support.lenovo.com/>.

### Legal notices

Lenovo and the Lenovo logo are trademarks of Lenovo in the United States, other countries, or both. Other company, product, or service names may be trademarks or service marks of others.

First Edition (December 2013)  
© Copyright Lenovo 2013.

**Reduce | Reuse | Recycle**



5SC9A6MXBS  
Printed in China