

Contents

CONTENTS	1
THE ANDROID ADVANTAGE	3
READ ME FIRST	3
DISCLAIMER	3
UNDERSTAND YOUR PHONE	5
GETTING STARTED	5
SIM CARD INSERTION	5
MEMORY CARD INSERTION	7
HANDSET KEYS	8
ON-SCREEN KEYS	8
CHARGING THE BATTERY	9
BATTERY SAVER MODE	9
BASIC PHONE FEATURES	11
SIGNING IN WITH YOUR GOOGLE ACCOUNT	11
HOME SCREEN	12
NOTIFICATIONS	13
AUTO-ROTATION	14
PHONE SECURITY	15
USE GOOGLE SEARCH	18
USING THE TOUCH SCREEN	20
USING THE TOUCH SCREEN	23
USING THE ONSCREEN KEYBOARD	23
RECENT APPS	23
CALLING AND MESSAGING	24
MAKE A CALL	24
CONTACTS	25

AIRPLANE MODE	25
MESSAGING.....	26
MULTIMEDIA	26
CAMERA	26
GALLERY	27
MUSIC PLAYER.....	27
FM RADIO	28
VIDEO PLAYER.....	29
.....	29
SETTINGS, NETWORKS, AND APPS.....	29
CONNECT TO THE INTERNET	29
TETHERING & PORTABILITY	30
PAIR WITH BLUETOOTH DEVICES.....	31
CONFIGURING E-MAIL.....	31
GOOGLE MAPS.....	32
DRIVE.....	32
MANAGE APPS	32
SAFETY PRECAUTIONS	33
TAKING CARE OF YOUR DEVICE	35
BATTERY RECOMMENDATIONS	35
RECYCLE YOUR PHONE.....	36
COPYRIGHT.....	36

The Android Advantage

Micromax E455 comes with Android Lollipop 5.0 that introduces a new design in terms of interface, apps, notifications, and optimization. Lollipop 5.0 offers enhanced battery life, and better security features to make your mobile experience pleasant and secure.

Read Me First

- Please read all safety precautions and this guide carefully before using your device to ensure safe and proper use.
- The descriptions in this user guide are based on the default settings of your device.
- Available features and additional services may vary by device, software, or service provider.
- Apps and their functions may vary based on the country, region, software or hardware specifications. Micromax is not liable for performance issues resulting from third-party apps.

Disclaimer

- The colors, specifications, functions and graphics shown/mentioned in the user manual may differ from the actual product. In such a case, the latter shall govern. Images shown are for representation purpose only. Specifications are subject to change without prior notice. Micromax keeps the right to modify the content in this user guide without prior notice.
- Upon first use of your device, your device will send

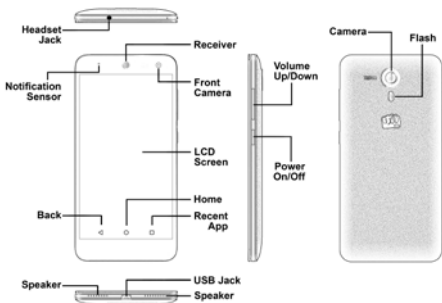
information related to your mobile, IMEI numbers, location details and other software details through SMS* automatically. This information may be used as further specified in Micromax privacy policy**.

- Talk and standby times are affected by network preferences, type of SIM cards, connected accessories and individual usage patterns. Services and some features may be dependent on the network, service/content providers, SIM cards, compatibility of the devices used and the content formats supported.
- Other product logos and company names mentioned herein may be trademarks or trade names of their respective owners.

*Operator tariff shall be applicable for SMS.

**Micromax privacy policy is available at www.micromaxinfo.com.

Understand Your Phone



Getting Started

SIM Card Insertion

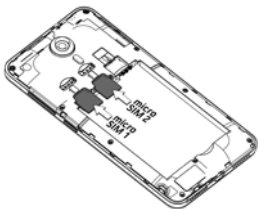
Your E455 is a dual-SIM phone that supports two micro SIM cards.

To insert the SIM card(s):

1. Switch off your phone and remove the back cover and battery as shown in the following images:



2. Insert the SIM 1 and SIM 2 in the respective slot(s) as shown in the following image:



3. Place the back cover and battery after inserting the SIM cards.



Please keep the SIM card out of the reach of children.



The card and the contacts are vulnerable to damage due to scratching or bending. Therefore, be careful when using, inserting or removing the cards.

Memory Card Insertion

To store additional multimedia files, you must insert a memory card.

1. Insert the memory card in the memory card slot as shown in the following image:



2. Place the back and battery of the mobile phone after inserting the memory card.

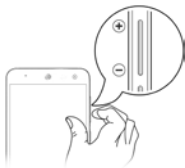
Handset Keys

Keys

Functions



- Long press to switch on or switch off the phone.
- Press once to turn off the screen or to wake up the screen.
- Press for 2 seconds to view quick options to turn off, switch to airplane mode, or reboot,



- Adjust the volume using the volume keys on the right side of the device.

On-Screen Keys

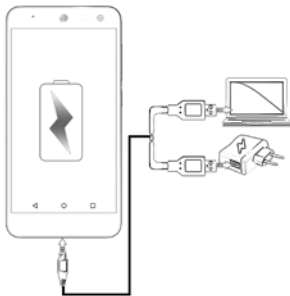
Keys	Functions
	Opens the most recently used apps.
	Opens the home screen. Long tap to open Google Now.



Opens the previous screen

Charging the Battery

Before using the device for the first time, you must fully charge the battery.



Use only Micromax chargers and cables. Other chargers or cables can cause the battery to explode or damage your device. This will invalidate your phone warranty.

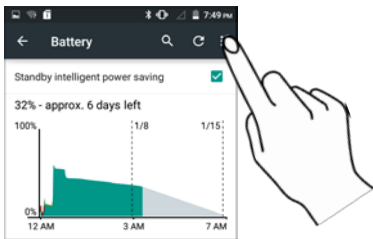
Battery Saver Mode


Your phone comes with a Battery Saver Mode that lets you save battery power when your device battery is running low and you cannot charge your phone.

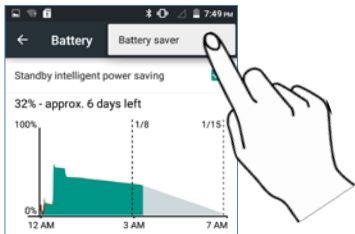
- It saves power significantly by changing the status bar and navigation bar at the top of the screen to orange, and running only the essential apps while turning off background data.
- It restricts the background app from refreshing such as periodic updates for apps like Gmail, Twitter, Facebook, etc. and limits the phone's performance to extend the battery life.
- Battery Saver Mode automatically switches off when the phone is connected to a charger.

You can enable/disable the Battery Saver mode by performing the following steps:

1. Go to **Settings** → **Battery**.



2. Tap  icon and then select **Battery saver**.



Enable Battery Saver option. You can also set the battery saver to turn on automatically at 5% or 15% battery.



Basic Phone Features

Signing in with your Google Account

Your Google Account lets you take full advantage of apps and services offered by Google Android market. Configure your Google account on this handset to get access to your Gmail, Google Play Store, Google Maps, and much more.



Internet connection is required for setting up Google account.

To sign in to your Google Account, go to  →  → **Accounts** → **Add account** → **Google**. Follow the registration steps to successfully configure your Google mail.

Home Screen

You can personalize your home screen with shortcuts, widgets, wallpapers and other items.

- Long tap to view quick options to change wallpaper or add widgets.
- Add extensions to the screen by placing widgets or app shortcuts.
- Swipe left or right on the home screen to view the next screen.
- In the bottom pane, there are five launcher icons for you to open different apps in the phone. Tap and hold to select a launcher icon and then you can rearrange or replace them with ease.

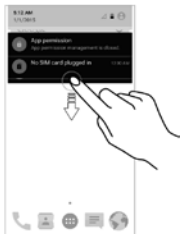
Widgets

- Widgets gives fast access to a set of apps in your phone.
- Allows you to place app shortcuts on your home screen and access them directly.
- Long tap on the home screen and tap on **WIDGETS** to view all available widgets.

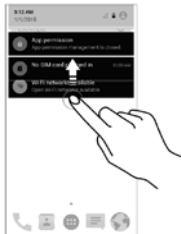
Notifications

You have various options for viewing and managing notifications.

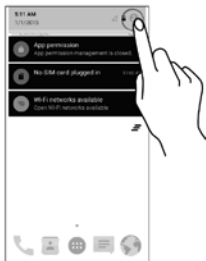
Open Notification Panel



Close Notification Panel



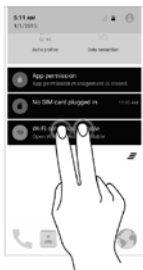
Open the Toolkit



Clear all Notifications



Open Quick Settings




- Notification icon appears in the status bar, along with a brief summary. You may clear each notification separately by swiping it towards left or right.
- Toolkit provides you shortcuts to manage basic phone features, such as Airplane Mode, Wi-Fi, Display Brightness, and many more.
- The notification LED notifies you with missed calls, text messages, charging on/off, etc.

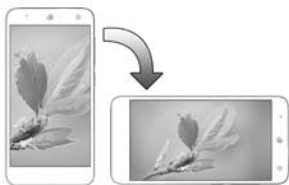
Auto-Rotation

Your phone can detect orientation and accordingly adjust the display.

To enable/disable auto-rotate feature:

- Open **Quick Settings** and select **Auto-rotate**.
- You can also enable/disable the auto-rotate feature from 

→  → Display → When device is rotated





Phone Security

You have various options to unlock your phone. Swipe unlock is the default unlocking method in the phone. To unlock:

1. Press the power key to wake up the phone.
2. Hold and drag the lock icon upwards.



To set other unlocking techniques, go to  →  → **Security** → **Screen lock**.

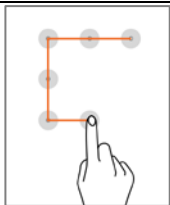
PIN



You may enter a PIN and set it as your screen unlocking password.

Pattern

You can set your own pattern by connecting the dots to prevent your phone from unauthorized access.





Password



You may enter any desired password and set it as your screen unlocking password.



You may set any desired locking technique from  →  → **Security** → **Screen lock**.



It is important to remember your screen lock password/pattern/PIN.

You can disable all unlocking methods from your handset by selecting the **None** option.

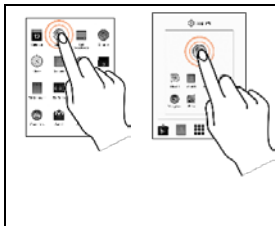
Use Google Search

Search for anything on your phone or on the Internet using the Google search bar at the top of your home screen.

- Type your search words into the box or press the microphone icon and speak your search query.
- Use voice commands to perform various actions on your phone.

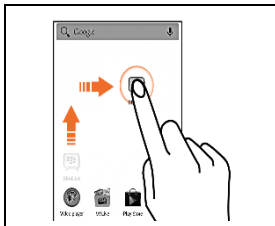
In addition to the search box on your home screen, Google Search is also available in the apps menu.

Using the Touch Screen



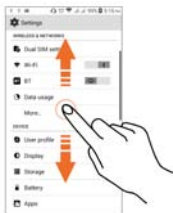
Tap and Hold

Tap and hold an item to view the list of actions based on the selected item and condition. Also, you can move items on the screen using this method.



Drag an Item

Tap and hold an item and move your finger on the screen until you reach the target position.



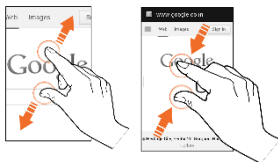
Scroll

To scroll a list, slide your finger across the surface of the screen upwards or downwards (without dragging an item).



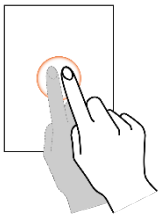
Swipe

Place a finger on the screen and steadily slide your finger in the desired direction.



Pinch Zoom

You can open any image or web page and then use your thumb and index finger to zoom the display



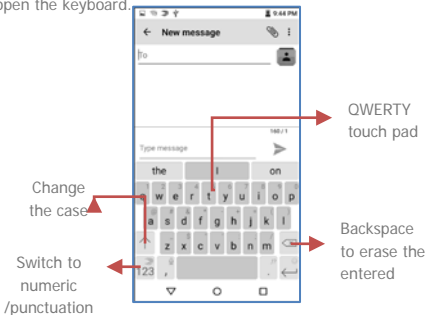
Double tap

Tap quickly twice on a webpage, map, or other screen to zoom. For example, double-tap a section of a webpage in the browser to zoom that section.

Using the Touch Screen

Using the Onscreen Keyboard


Some apps display the keyboard by default. In others, you will be required to tap a text field, where you want to enter text, to open the keyboard.

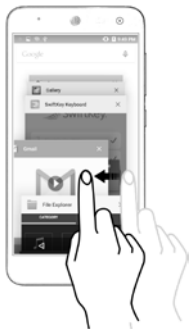


i After typing, tap  key to close the keyboard.

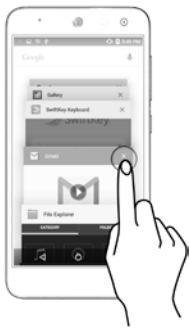
i Tap and hold the text field to open a menu and to cut/copy/paste text.

Recent Apps

Tap and hold the  key on the home screen to view the list of recent apps. You can easily remove items from the list to free some memory and make your phone work faster.





Drag an item towards left or right.



Tap and hold an item and then select the cross sign.



Calling and Messaging

Make a Call


- Tap  to open the dial pad for making calls.
- Your dialer also lists the call logs and the favorites.
- You can show/hide the dialer by tapping  or view the call history by selecting **RECENTS**.

Contacts

Tap  to access contacts

- Save and synchronize contacts in your contact list.
- Create groups or mark contacts as favorites in your phonebook.
- Use tabs or swipe to view contact groups, contacts, and favorite contacts.
- Tap  icon to search for your desired contacts, and to add new contacts, tap 

You can synchronize your contacts list with any of your accounts configured on this device.

1. Tap the  icon from the contacts screen and then tap **Accounts**.
2. Select the account(s) with which contacts list is to be synchronized. You can auto-sync contacts by selecting the **Auto-sync data** option.

Your contacts synchronization will be complete in a few seconds.



To synchronize contacts, you need to have Internet via your SIM or Wi-Fi. If your Sync does not proceed as expected, check whether data option is set to ON.






Airplane Mode

Some locations may require you to disable all the wireless features of your mobile. The Airplane Mode disables all incoming and outgoing calls, Wi-Fi, and Bluetooth connections.

Open Quick Settings and to start **Airplane mode**.

Messaging

You can compose, send and receive messages.

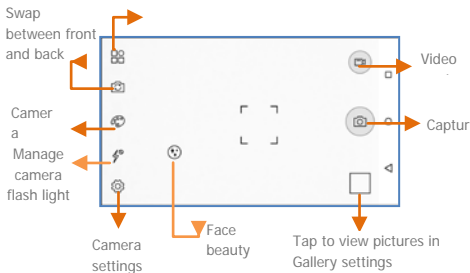
- Tap  to go to the messaging
- Tap  to compose a message.
- Tap the  icon to attach files
- Tap  to select contact(s) from the contact list
- Tap  to send the message

Multimedia

Camera

Go to  → 

Camera
modes



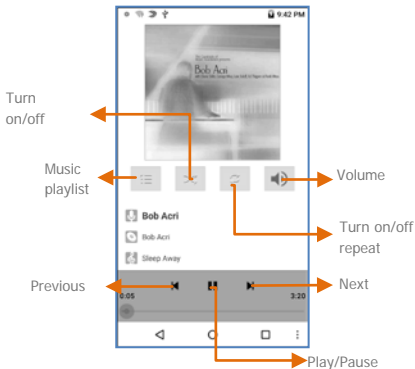
Gallery

Go to  → 

You can use the Gallery to view pictures and share files. Tap an album to open and view its contents.

Music Player

Go to  →  to open the music player.



You can use an SD card to increase the storage capacity for music, photos, emails, and so on.

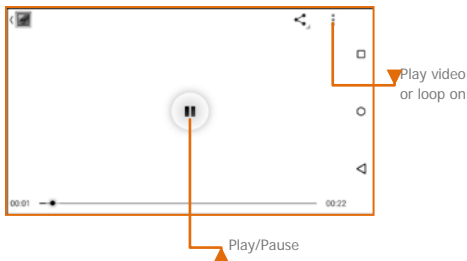
FM Radio

Go to  → 

You can listen to your favorite FM channels using the inbuilt FM receiver of your phone. You need to plug-in the headset as it works as antenna for the FM radio. Use the intuitive buttons and icons on the phone in the radio interface to enjoy the features of your inbuilt FM radio.

Video Player



Go to  → 



Settings, Networks, and Apps



Your phone can connect to a variety of networks and devices, including Internet, Wi-Fi, GPRS, Bluetooth, devices, such as headsets. You can also transfer files to/from your PC through the data cable.

Connect to the Internet

Go to  →  → **SIM cards** and select the SIM on which data connection is to be enabled.

You may also need to configure the access point name for the

data connection to work.

Go to  →  → **More** → **Cellular networks** → **Access Point Names** and select the access point name from the list.



By default, the access point name gets configured once you insert the SIM, Or, your network provider sends the access point name settings via SMS. You may need to install these settings. If the access point names are not listed by default, please contact your network provider for the same.

Tethering & Portability

You can use your E455 as a modem and connect your PC or laptop to the Internet, when required. Start using your SIM data pack on your PC or Laptop now!

Go to  →  → **More** → **Tethering & portable hotspot**.

USB Tethering

1. Connect your phone with your PC/Laptop via USB cable.
2. Select the **USB tethering** option.
3. Select your phone network as the network connection in your PC/laptop and get access to the Internet.

Bluetooth Tethering

1. Pair your phone with the Bluetooth enabled PC/laptop via Bluetooth pairing option.
2. Select the **Bluetooth tethering** option in your phone.
3. On the paired PC/laptop, select the Bluetooth device (your phone) and choose to connect to the Internet.

Wi-Fi hotspot

1. Turn on the **Wi-Fi hotspot** option in your phone.
2. On the other Wi-Fi enabled PC/laptop/handset, choose your phone as a Wi-Fi network to connect with it.
3. View and configure Wi-Fi hotspot settings by tapping the **Set up Wi-Fi hotspot** option.




Your mobile operator will charge you based on your GPRS data usage.

Pair With Bluetooth Devices

Go to  →  → **Bluetooth**.



1. If Bluetooth is off, turn it on. Your phone scans and displays the Bluetooth devices in range.
2. Tap the ID of the other device in the list to pair with it.
3. You will be prompted to confirm passkey on both devices.
4. Tap **Pair** to confirm the passkey and pair the devices. On successful pairing, your phone connects to the device.



If the device you want to pair with is not in the list, make sure the Bluetooth on that device is turned on, then tap  and select **Refresh** to search again.

Configuring E-Mail




You can check and reply to your emails from your device anywhere. Apart from the Gmail account, you can configure other accounts too on this device.

To set up an email account, go to  →  → **Accounts** → **Add account**, select the type of account you want to create and enter the required details to successfully configure your account


on the device.


Google Maps

Google Maps gives you access to various map-related services. You can view your location on a map, search for different landmarks, find directions to locations, and even view Street View photos from around the world. You can even download maps to use offline.

- Tap on  to start using Google Maps.
- Tap  →  → **Location** to enable location access:

 Internet connection is required for using Google Maps.

 The Google Maps app may not be available in every street, country or region.

 Micromax does not guarantee the accuracy of any directional services.



Drive


Back up all your files like videos, images, PDFs, etc. using Google Drive™ so that you don't lose them. You can view your documents from any smartphone or computer and share them with others.

Tap on  to start using Drive.


Manage Apps

Your phone comes with a host of apps to make your life easier





and more convenient. The Android phones offer users access to unlimited entertainment sources. You can download apps, games, movies, and books from the ever increasing Android market. To view and manage the list of all inbuilt, downloaded, and running apps, go to  →  → **Apps**.










To download apps, games, movies, and books from the Google Play Store, tap on  to access the Google Play Store.

 Not all items are free of cost in the Google Play Store.

 You need to have an Internet connection and be signed in to your Google Account to use the Google Play Store.

Safety Precautions

	Switch off your device in any area with potential explosive atmosphere. Sparks arising out of radio frequency may cause fire or explosion. Therefore switch off your device at refueling stations, fuel depots, chemical plants or places where blasting operation is in progress. Remember to comply with legal requirements and local restrictions when using the phone.
	Your Phone's radio waves may interfere with inadequately shielded medical devices. Switch off your device when regulations require you to do so.
	Always keep the phone and accessories out of reach of small children. Small parts such as the SIM card or micro SD card can be dismantled and swallowed by small children.
	Do not place the phone near electromagnetic data carriers such as credit/Debit cards. Information stored on them could be lost.

	Permanent damage to hearing may occur if you use earphones at high volume for prolonged periods. Set your volume to a safe level. If you experience discomfort in your ears, reduce the volume or discontinue the use of your earphones.
	Manufacturers of medical devices recommend a minimum distance of 15.3 cm (6 inches) between a wireless device and an implanted medical device such as pacemaker or cardioverter defibrillator to avoid issues arising out of radio frequency interference.
	The mains voltage specified on the power supply unit must not exceed to prevent damage to the charging device.
	You may only open the phone to replace the SIM card and micro SD card. You must not open the battery under any circumstances. All other dismantling of this device other than as explained in the manual are strictly prohibited and will invalidate the warranty.
	The phone may cause interference in the vicinity of TV sets, radios and PCs.
	The battery may cause damage, injury or burns if a conductive material closes the circuit of the terminals. Exercise care in handling any charged battery, particularly when placing it inside your pocket, purse or other container with metal objects. Do not dispose of batteries in fire as they may explode.
	Do not use the phone while driving. When you have to use the phone, please use the earpiece. Please put the phone safely in the phone stand. Do not put it onto any passenger seat or any place from which it may fall down during collision or emergency braking.
	Flight is influenced by interference caused by the phone. It is illegal to use a phone on the airplane. Please turn off your phone during a flight.
	The phone must be repaired by Micromax authorized personnel only. Repairing this phone by yourself other than our authorized service agents/centers goes against the warranty rules.

Taking Care of your device

Your device is a product of superior design and craftsmanship and should be handled with care. The following suggestions will help you protect your phone.

- Keep the device dry. Precipitation, humidity, and all types of liquids or moisture can rust the electronic circuits. If your device gets wet, remove the battery, wipe it with a dry cloth and take it to an authorized service center.
- Do not store the device in high or cold temperature. Extreme temperatures can shorten the life of electronic devices and damage batteries.
- Do not use or store the device in dusty, dirty areas. Its moving parts and electronic components can get damaged.
- Do not drop, knock, or shake the device. Rough handling can break internal circuit boards and fine mechanics.
- Do not use harsh chemicals, cleaning solvents, or strong detergents to clean the device. Only use a soft, clean, dry cloth to clean the surface of the device.
- Use Micromax battery, chargers, accessories and supplies. Micromax will not be held responsible for user's safety when using incompatible accessories or supplies.

Battery Recommendations

- Please put the battery in a cool and well-ventilated place out of direct sunlight. We recommend you to charge the battery at room temperature range.
- Batteries have life cycles. After a full charge, if the power reserve of the battery tend to deplete inordinately faster than usual, the battery life is at an end. Replace the battery with a new battery of the same make and specification.
- Use compatible batteries, chargers, accessories and supplies. Micromax will not be held responsible for user's

safety when using incompatible accessories or supplies.

- Do not discard the battery with household trash. Please dispose of used battery according to your local environmental laws and guidelines.

Recycle your Phone



The WEEE logo (shown at the left) appears on the product (battery, handset, and charger) to indicate that this product must not be disposed off or dumped with your other household wastes. You are liable to dispose of all your electronic or electrical waste equipment by relocating over to the specified collection point for recycling of such hazardous waste.

Collection and proper recovery of your electronic waste equipment at the time of disposal will allow us to help preserve the environment. Recycling of the electronic waste equipment will ensure safety of human health and environment. For more information on best practices for disposal of electronic and electrical waste, please visit to our web site: www.micromaxinfo.com/weee.php.

Note: Micromax will not bear any responsibility for any non-compliance with the above mentioned guidelines or improper usage of the mobile phone.

Copyright

All rights reserved. Reproduction, transfer, distribution or storage of part or all of the contents in this document in any form without the prior written permission of Micromax is strictly prohibited.