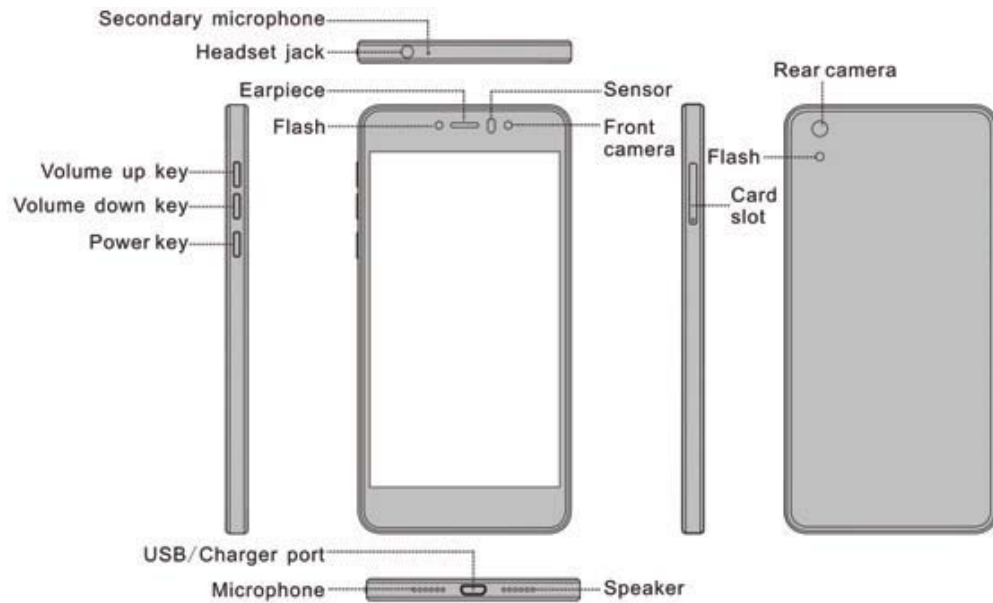


WATER 1 (LS-5002)

Quick Start Guide

Start Here

Phone overview



Note: Do not try to open rear cover, Battery cannot be removed by user.

Knowing the Keys

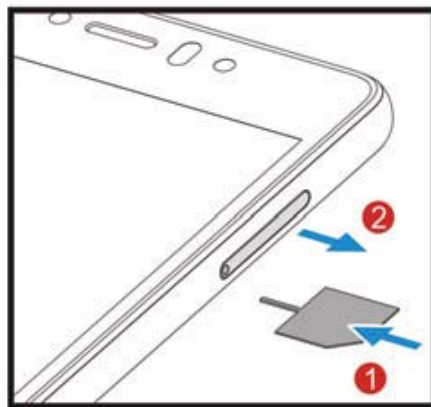
Key	Function
Power Key	Press and hold to power on, or power off. Press to turn off or on the screen display. Long Press 10-12 Sec to reboot handset
Home Key	Touch to return to the Home Screen from any application or screen. Touch and hold to switch between recent apps.
Menu Key	Touch to get the options for the current screen.
Back Key	Touch to go to the previous screen.

Key	Function
Volume Up/ Down	Press or hold to turn the volume up or down.

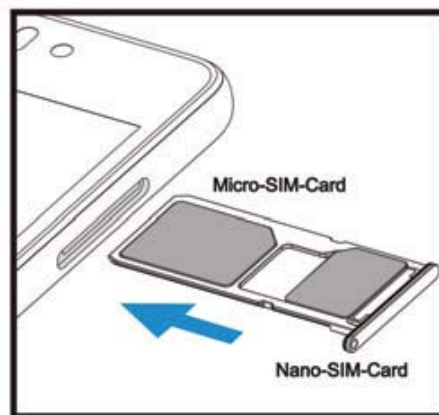
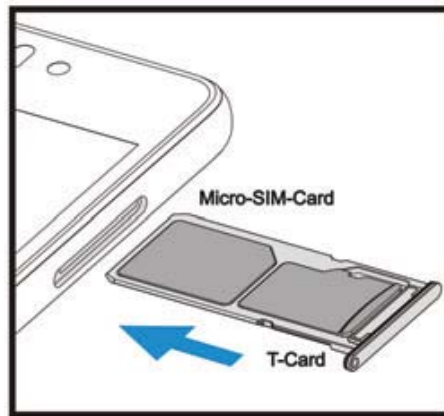
Getting started

Please make sure that the phone is powered off before proceeding.

1. Open card slot



2. Install Micro SIM Card



SIM Slot 1: Micro SIM card slot

SIM Slot 2: Nano SIM card slot

Note: 4G LTE works in both SIM Slots individually, but not simultaneously (i.e. One SIM slot works as 4G LTE and other as 2G based on the Data subscription set)

Screen

LS-5002 features a large 12.7cm with 1080x1920 Resolution which makes your phone look fascinating.

Screen lock

You can increase the security of your phone by selecting screen lock .Screen lock settings can be found under “Settings”>“Security”> “Screen lock”.

Customize home screen

In standby mode, touch and hold an empty area to add/set wallpapers. To customize the home screen, you can move/remove/add items.

Camera

WATER 1 (LS-500) is equipped with a 5 MP front camera and a 13 MP rear facing camera, which are designed for you to share wonderful moments with friends and family.

Adjust focus, exposure, zoom in or zoom out, switch between cameras and switch between the functions by flipping the icon on the screen.

Internet

You can enjoy network by selecting 4G, 3G, WLAN, and GSM. Enjoy music, videos, apps and news anywhere and anytime as you like.

Make a call

You can make a call under the interface of Call log, contacts, favorites, message (which contains a phone number). In standby mode, press call key to make a call.

Messaging

Touch and hold the text box to select an input method. You can insert smileys, pictures, audio or video files and send to multiple recipients.

Email

The email app enables you to read, compose and send emails, and is configured to work with all the major email providers. WATER 1 (LS-5002) supports multiple account mode, and you won't miss any email.

Music

WATER 1 (LS-5002) supports various music formats **MP3, MIDI, WAV, AMR, AAC, AAC+**), different sound effects and categorizes your files on the basis of Artists, Albums, Songs & Playlists.

Videos

Enjoy a visual feast in a variety of video formats (**mp4, avi, mkv, wmv**), please choose WATER 1 (LS-5002). You may trim, mute and share a video.

Photos

You will find it very easy to view all the photos. Flick right or left to move among images. Double-tap or pinch the photo to zoom. You may edit, rotate, crop share, and print a photo (**Jpg/gif/png**).

Intelligent keyboard

WATER 1 (LS-5002) automatically corrects and suggests words as you type, and it also supports pictures and audio input.

Cut, copy, and paste

Touch and hold text content to bring up the magnifying glass, and then slide your finger to move the insertion points. Then tap to cut, copy, or paste. It is very easy to copy text from web pages, email, or text messages.

Map

You can view satellite images or street maps with detailed route instructions just as you are walking in the street. The Map app can be used to locate yourself, view real-time traffic conditions, pedestrian, bus routes or car driving route instructions.

Extending Battery Life

Few points to improve battery life.

- Turn OFF radio services i.e. Wi-Fi, Bluetooth and GPS, when not needed.

- Keep screen brightness on Auto Mode.
- Use Bluetooth tethering or USB tethering (when you have a cable) instead of portable Wi-Fi hotspot to share your phone's data service.
- From the home screen, hold the home key to close the recent apps running in background.

Note:

Due to non-usage of Phone for long time battery may be drained out and it needs to be connected with charger and allow battery to charge about 30-40 minutes in off state. If still the problem persists, suggested to visit the nearest Device Care Centre.

Correct disposal

- Do not dispose off your mobile and its battery in fire.
- Do not dispose your mobile with the regular waste.

- For proper disposal please contact customercare.



This marking on the product, accessories or literature indicates that the product and its electronic accessories (e.g. charger, headset, USB cable) should not be disposed of with other household waste. This product is RoHS compliant.



This marking on the battery, manual or packaging indicates that the batteries in this product should not be disposed of with other household waste.

Safety information

Read all safety information before using the device to ensure safe and proper use.



Warning

Following the warning information provided below to prevent incidents such as fire or explosion

- Do not expose the device to physical impact or damage.
 - Do not carry your device in your back pockets or on your waist.
 - Store spare batteries in an appropriate protective case.
- Use manufacturer-approved batteries, chargers, accessories, and supplies
- Prevent the multipurpose jack and battery terminals from contacting conductive elements, such as metal or liquids.
- Do not touch the device with wet hands. Also, do not use the device in humid environments, such as rest rooms, or

during water-based activities, such as swimming.

- If any part of the device is cracked or broken, or if the device becomes very hot, stop using the device immediately and take it to a Reliance Service Centre.
- Do not turn on or use the device when the battery compartment is exposed

Fellow the warnings below to prevent injury to people or damage to the device

- Do not allow children or animals to chew or suck the device.
- Do not poke eyes, ears, or other body parts with the device or insert the device into the mouth
- If the device has a camera flash or light, do not use it close to the eyes of people or animals.
- Do not store your device in very hot or

very cold areas.

- Do not store your device near or in heaters, microwaves, cooking equipment, or high pressure containers
- Keep your device dry
- Do not use your device outdoor during a thunderstorm
- Comply with all safety warnings and regulations regarding mobile device usage while operating a vehicle



To prevent possible hearing damage when using a headset, do not listen to sound at high volume for long periods

Specific Absorption Rate (SAR)

Certification information

Precautions:

Use a wireless hands-free system (headphone, headset) with a low power Bluetooth emitter

Make sure the cell phone a low SAR

Keep your calls short or send a text message (SMS) instead. This advice applies especially to children, adolescents and pregnant women.

Use cell-phone when signal quality is good.

People having active medical implants should preferably keep the cell phone at least 15cm from the implant

THIS DEVICE MEETS INTERNATIONAL GUIDELINES FOR EXPOSURE TO RADIO WAVES.

Your mobile is designed not to exceed the limits for exposure to radio waves recommended by international guidelines. The guidelines were developed by an

Independent scientific organization (ICNIRP) and include a substantial safety margin designed to assure the safety of all persons, regardless of age and health

The radio wave exposure guidelines use a unit of measurement known as the Specific Absorption Rate, or SAR, The SAR limit for mobile devices is 1.6W/Kg.

The highest SAR values under the ICNIRP guidelines for this device model are:

Maximum SAR for this model and Conditions under Which it was recorded	
Head SAR	0.878W/kg
Body-worn SAR	0.444W/kg

Body-worn SAR testing has been carried out

at a separation distance of 1.5 cm. To meet RF exposure guidelines during body-worn operation, the device should be positioned at least this distance away from the body

Please contact in case of help:

Customercare email id: care@mylyf.com

Customercare Tollfree phone number -
1800-890-9999