

alcatel A30 PLUS

QUICK START GUIDE

Your Mobile

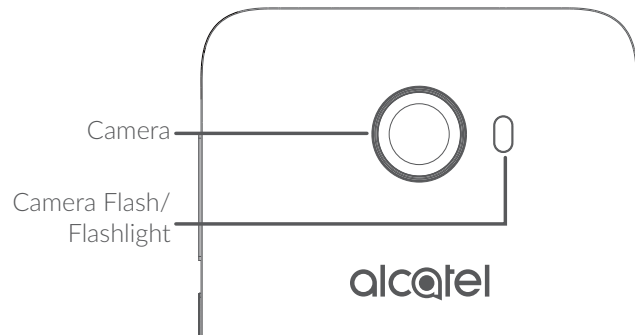
Keys and connectors



SAVE
PAPER
SAVE
TREES

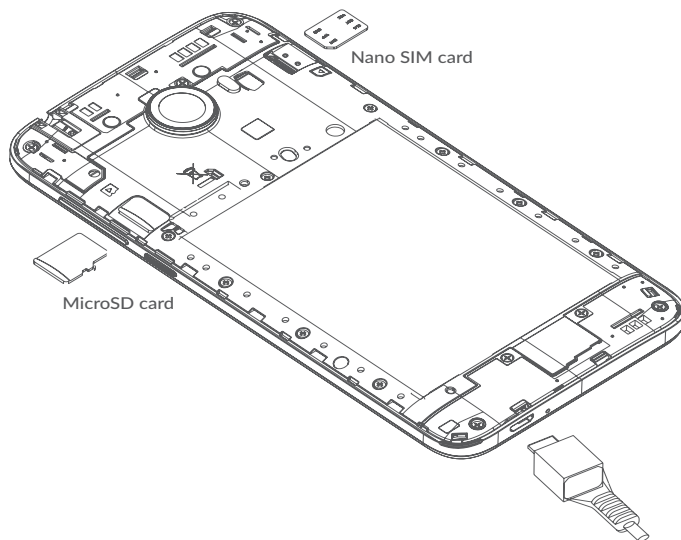
PLEASE CONSIDER THE
ENVIRONMENT BEFORE PRINTING





Getting started

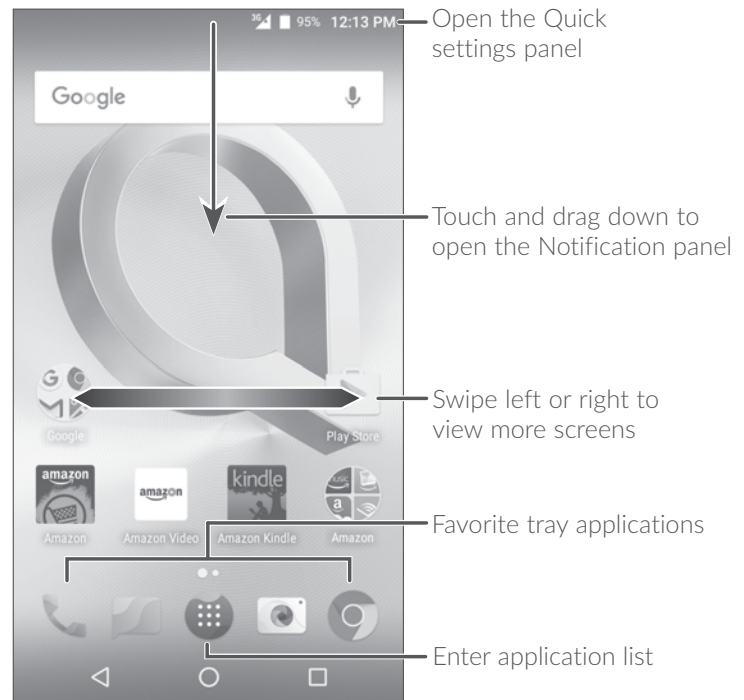
- ① Charge the battery.
- ② Insert or remove your Nano SIM card or microSD card.



Home screen


You can bring all the items (applications, shortcuts, folders, and widgets) you love or use most frequently to your Home screen for quick access.

Touching the **Home** key always takes you back to the main Home screen.



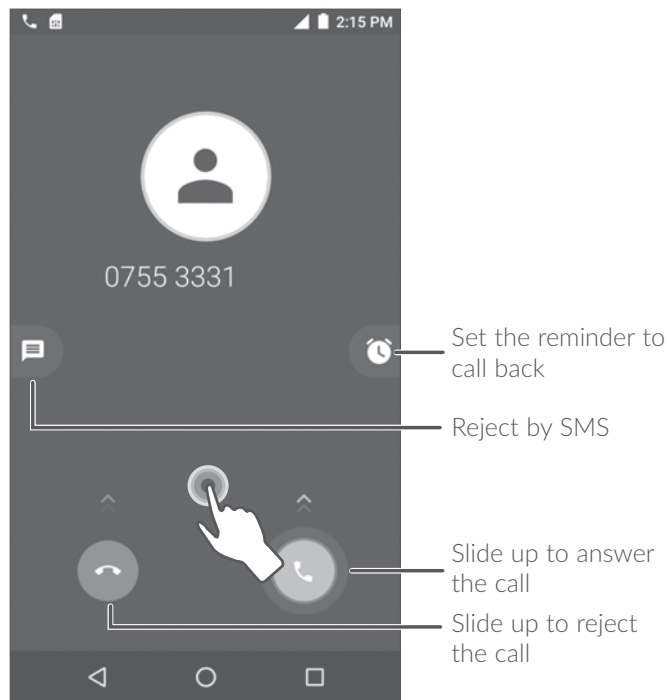
Phone call

Making a call

Enter the desired number from the keyboard and touch  to make a call.

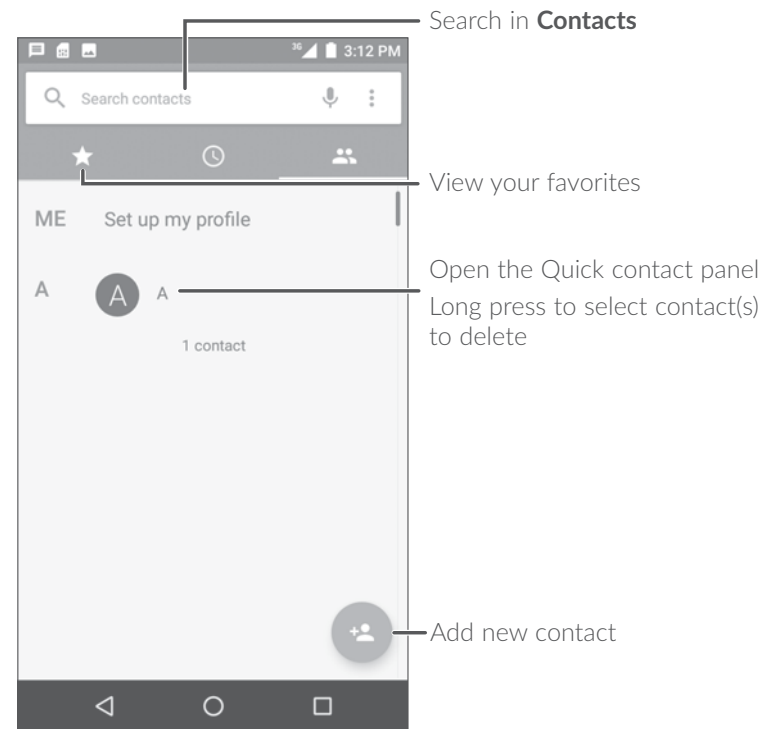
Answering a call

When you receive a call, touch or slide below icons to:



Contacts

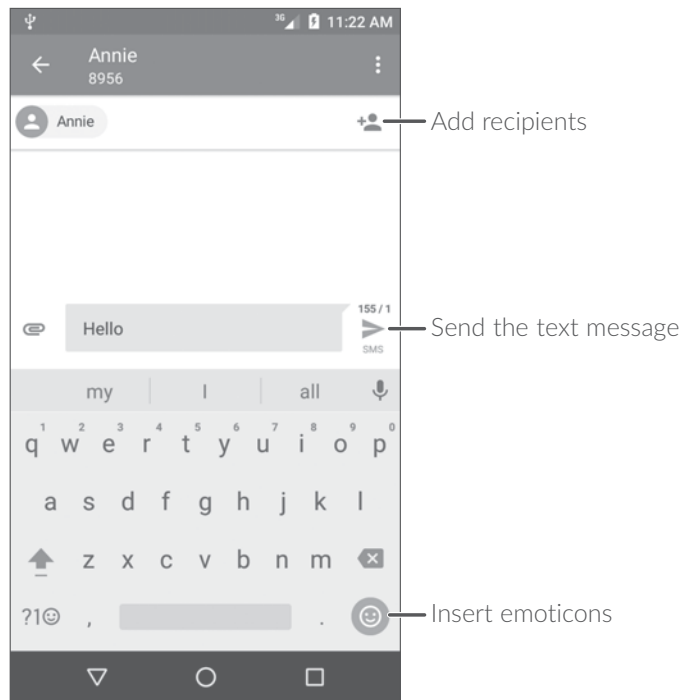
You can view and create contacts on your phone and synchronize these with your Gmail contacts or other applications on the web or on your phone.



Messaging

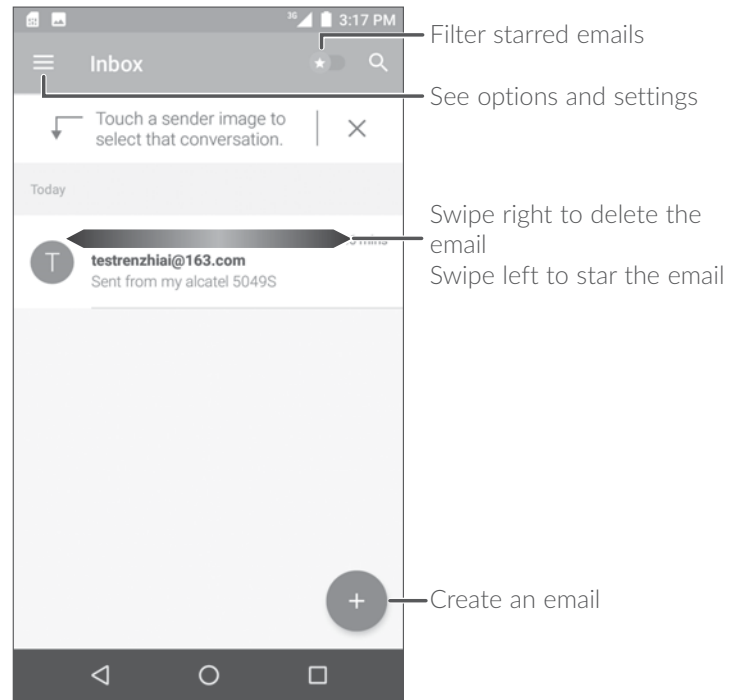
You can create, edit, and receive SMS and MMS.

An SMS will be converted to MMS automatically when media files (image, video, audio, slides, etc.) are attached or subject or email addresses are added.



Email

The first time you set up your phone, you can select to use an existing Email account or to create a new one.



Help

To get help:

- **View user manual and FAQ**

Visit www.alcatelonetouch.com

- **Update your phone's software**

Open the **Updates** application to check software updates.

- **Back up your personal data**

Go to **Settings > Backup and reset > Back up my data** and turn it on.

- **Reset your phone**

Go to **Settings > Backup and reset > Factory data reset**, and then touch **RESET PHONE**.

Battery Recycling (USA & Canada):

Alcatel partners with Call2Recycle® to offer a safe and convenient battery recycling program.

For more information on our Battery Recycling Program, please visit the USA and Canada website at www.alcatelonetouch.us/battery-recycling and www.alcatelonetouch.ca/battery-recycling