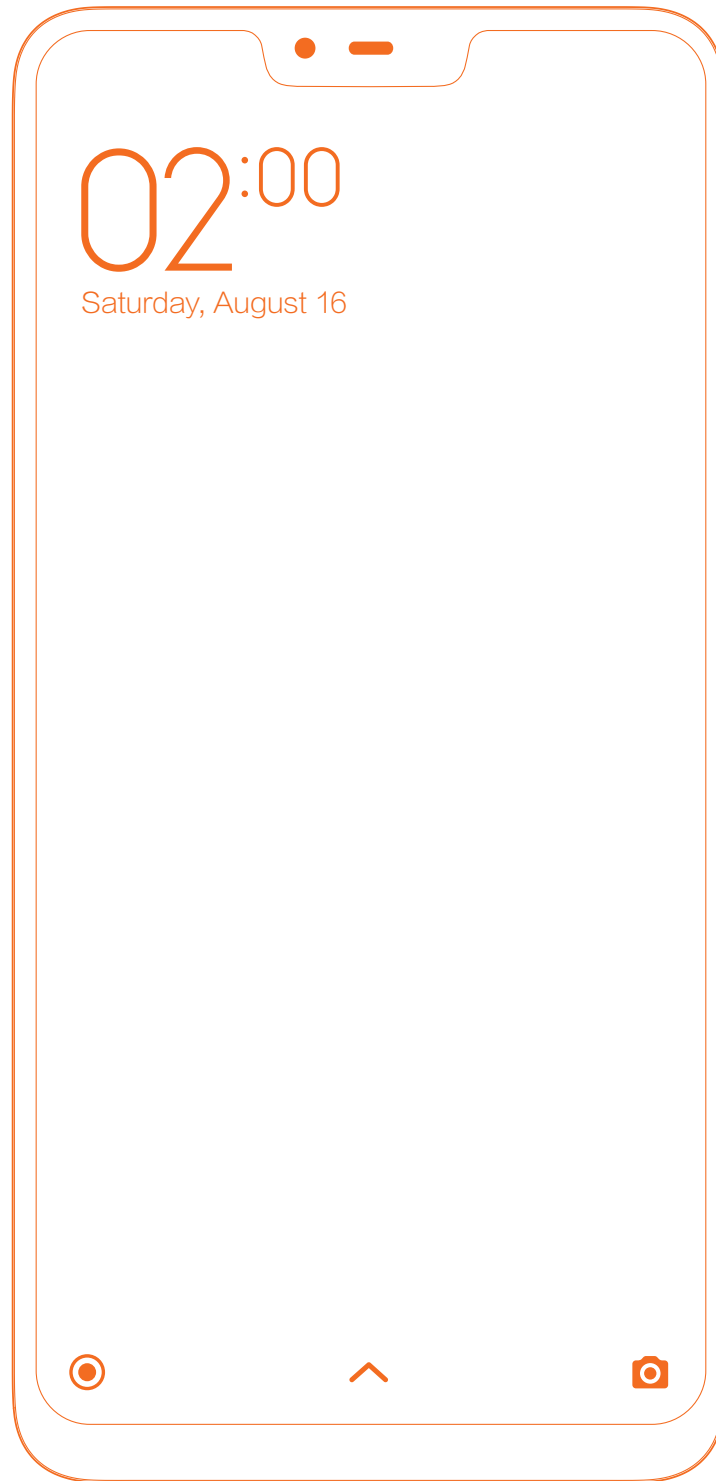


Mi 8 Lite

User Guide





Volume
Buttons

Power
Button

USB Type-C Port

Thank you for choosing **Mi 8 Lite**

Long press the power button to turn on the device.
Follow the on-screen instructions to configure the device.

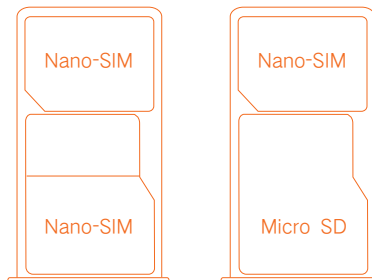
For more information

Visit our official website: www.mi.com

MIUI

Mi 8 Lite comes pre-installed with MIUI, our customised Android-based OS which pushes frequent updates and user-friendly features suggested by over 200 million active users worldwide. For more information, please visit www.miui.com.

SIM Card Tray:



About Dual SIM:

- Dual 4G SIM requires the support of local telecom operator services, and may not be available in all regions.
- Supports dual nano-SIM cards. When using both SIM card slots, either card can be set as the primary card.
- Only certain regions and telecom operators support VoLTE.
- System updates may be applied when network optimization occurs. For details, please refer to the system version in use on the device.

CONTENTS

1-Basic	4
1-Basic Features	4
Turning phone on and off.....	4
SIM cards	4
Charging	4
2-Telecommunications	5
1-Phone	5
Making calls.....	5
Incoming calls.....	5
In-call features.....	6
Caller ID	6
Call settings	7
2-Messaging	7
Sending and replying to messages.....	7
Search.....	8
Settings.....	8
3-Contacts	9
2-Pictures	10
1-Pictures	10
1-Camera	10
How to quickly open Camera	10
Camera modes	10
Tilt-shift	11
Timer	11
Keeping photos straight while shooting.....	11
Group selfies	12
Beautify	12
Zoom	12
Time stamps and watermarks	14
HDR	14
2-Gallery.....	15
Editor.....	15
Free up storage space	15
Collage.....	15
Favorites	16
Hidden album.....	16
Baby album.....	16
Automatic backups.....	16
3-Home.....	17
1-Home.....	17
1-Lock Screen	17

Basic features	17
Additional features.....	17
Wallpaper Carousel	17
2-Home Screen	18
Basic features	18
Editing mode	18
3-Notifications Status Bar.....	19
Basic features	19
App notifications	19
Notifications folder.....	20
Other features	20
4-Global App vault.....	20
5-Split screen.....	21
6-Quick ball	21
4-Tools	23
1-Content Services	23
Browser	23
Mi Apps	24
Mi Music.....	32
Themes.....	33
2-File Manager	38
File Manager	38
Local backups	39
3-Other	39
Feedback	39
4-Tools	40
Calendar	40
Clock.....	40
Weather	41
Security.....	42
Cleaner	42
Basic scan	42
Security scan	43
Manage apps.....	43
Permissions	44
Game speed booster	45
Deep clean.....	45
Battery usage	46
Test network.....	46
Blocklist	46
App lock.....	47
Dual apps.....	49
Notes	49
Recorder	50

Screen Recorder	51
Calculator	51
Compass	52
Mi Mover	52
Scanner	52

1-Basic

1-Basic Features

Turning phone on and off

1. Turning on

Press and hold the Power button to turn your phone on.

2. Turning off

Press and hold the Power button until the menu appears. Tap "Power off".

If your device doesn't respond, press and hold the Power button for 15 seconds to force reboot.

3. Rebooting

Press and hold the Power button until the menu appears. Tap "Reboot".

SIM cards

1. Inserting SIM, USIM, and UIM cards

Use the provided SIM tray extraction tool to take the SIM tray out of the side of your phone.

Place your SIM card inside the tray and insert it into your device.

2. Removing SIM, USIM, and UIM cards

Use the provided SIM tray extraction tool to take the SIM tray out of the side of your phone.

Remove your SIM card from the tray and insert the tray back into your device.

3. SIM, USIM, and UIM card settings

You can only use the services of one mobile carrier on a single SIM device. Dual SIM phones provide more options depending on the number of SIM cards installed.

On a dual SIM device, you can set default SIM cards for making calls and using mobile data in Settings > SIM cards & mobile networks.

You can edit SIM card names which are displayed on the dial pad. To do this, go to Settings > SIM cards & mobile networks and tap your SIM card.

Options for changing preferred network types are available in Settings > SIM cards & mobile networks > Preferred network type.

Charging

When your phone's battery is running low, connect the USB cable to the phone and plug it into the adapter connected to a power outlet. Disconnect the charger when your phone is fully charged.

Use only authorized USB cables and power adapters. Using unauthorized devices to charge your phone may severely damage the battery and lead to explosions.

2-Telecommunications

1-Phone

Making calls

There are multiple ways to make calls in MIUI.

1. Using dial pad

Enter a phone number on the dial pad and tap the green button to dial. If you tap the green button directly, the last number you dialed will appear. Tap the button again to make a call.

2. Press and hold a phone number

Press and hold a phone number to make the dialing button appear. Tap the button to make a call.

3. Call numbers from call history

Tap any number in your call history to return a call.

4. Quick dial

Press and hold a digit on the dial pad to assign a phone number to it.

Incoming calls

You might be notified about incoming calls either by a full-screen dialog or a floating notification.

1. Answering calls

Slide the green button in the full-screen dialog to answer a call, or simply tap the button if you see a floating notification.

2. Rejecting calls

Slide the red button in the full-screen dialog to reject a call, or simply tap the button if you see a floating notification.

3. Reply with SMS

Slide the SMS button in the full-screen dialog to reply with a text message. You can choose one of the quick replies or write a custom message.

4. Silencing the ringtone

Press any physical button on your phone to silence the ringtone.

5. Flip to silence ringer

When your phone is on a horizontal surface with the screen facing up, flip it over to silence ringer. You can turn this feature on in Call settings > Incoming call settings.

6. Quiet ringer when lifted

Reduce ringer volume for incoming calls when the phone is raised. You can turn this feature on in Call settings > Incoming call settings.

7. Increasing ringtone volume

Ringtone volume can gradually grow to the level you set. You can turn this feature on in Call settings > Incoming call settings.

8. Flash when ringing

You can make flash notify you about incoming calls. This feature is available in Call settings > Incoming call settings.

In-call features

There are multiple options available to you during calls.

- Recorder: You can record calls and save audio to Recorder.
- Notes: Make notes which will be saved to the Notes app after the call is ended.

Caller ID

Caller ID allows you to identify the phone numbers which aren't saved to your contacts.

The data comes from two sources: Yellow pages database and user reports.

1. Phone numbers from Yellow pages

Yellow pages contain phone numbers of companies and services. They are provided by our partners or businesses themselves. The info you'll see will include company/service names and logos. Phone numbers from Yellow pages will always be identified if you receive calls from them.

2. Marked phone numbers

MIUI users can mark unknown numbers as fraud, telemarketing, taxi companies, etc., and report this info to MIUI. If a substantial number of users provide consistent feedback for a single number, you'll see this phone number along with a comment when you receive a call.

· Marking a phone number

In some cases an automatic dialog suggesting you to report the phone number will appear after a call is ended. You can also report phone numbers proactively on the "Details" page of a number.

· Correcting reported phone numbers

If you find that a incorrect info is attributed to a phone number, you can correct it on the phone number's "Details" page.

Call settings

The settings include options for calls, mobile networks, and SIM cards. Tap the Menu button on the dial pad to open settings.

1. Call recording

You can record all your calls automatically.

You can record calls from all numbers, or limit the recordings to custom numbers, unknown numbers, and/or numbers from the directory.

2. Identify unknown numbers

Use this feature to make MIUI check whether unknown numbers are marked as companies or services. Press and hold a phone number to make a call.

3. Location & country codes

This feature makes MIUI display the location of the phone numbers from which incoming calls are made. Options for setting a default country code and adding country codes automatically are also available.

4. Advanced settings

You can find dial pad touch tone settings and other personalization options here.

2-Messaging

Sending and replying to messages

1. Sending a message

Open the messaging app and tap the plus to create a blank message. You can select the receiver from your contacts or add the phone number manually. Enter your message and tap "Send".

2. Replying to a message

Tap a message you received and enter your reply in the field below. Tap "Send" after you're done.

3. Attachments and timed messages

Tap the plus button while you're composing a message to attach a contact, image, item from favorites, audio, video, or slideshow.

Swipe right to see the list of quick replies.

You can also find an option for sending timed messages among the attachment options.

4. Selecting a SIM card for outgoing messages

If you have two SIM cards in your device, you'll be asked which SIM card to use before sending a message.

Search

Use the search bar at the top of the start page to search for phone numbers from Yellow pages, messages, and conversations.

Settings

1. Mi Message

Send messages to other MIUI devices without incurring charges.

2. Display

Smart Messaging

Smart messaging allows MIUI to check the incoming messages for one-time passwords and create smart menus for messages from businesses.

Notifications group

Use this feature to group SMS notifications automatically.

Show profile photos

When this feature is on, MIUI will display profile photos for people and assign photos to businesses automatically.

Assign contact photos

Profile photos containing the person's initials will be assigned to contacts without profile photos.

Show blocked SMS

When this feature is on, blocked text messages will be shown in the conversations list.

3. Notifications

Show messages on Lock screen

Turn this feature on to show message previews on the Lock screen and in the Notification shade.

Delivery status

Use this feature to be notified when your messages are delivered.

Delivery sound

Play delivery sound when your messages are delivered.

4. Additional settings

Deleted messages

Viewing the deleted messages stored in Mi Cloud is available to all Mi Cloud members.

Sync messages from Mi Cloud

Turn on Sync with Mi Cloud to back up your SMS messages. Options for dual SIM devices are also available.

Additional settings

Settings for advanced users can be found at the bottom of the settings page.

3-Contacts

1. Adding contacts

Open the Contacts app and tap the plus to add a contact.

2. Importing contacts

Importing contacts from accounts

Options for importing contacts from your accounts will appear when you open the app for the first time. They are also available in the settings.

2-Pictures

1-Pictures

1-Camera

How to quickly open Camera

1. Home screen shortcut

Tap the Home screen shortcut to open Camera.



2. Lock screen

Swipe left on the Lock screen to open Camera

3. Double press the Volume down button

Toggle the switch in Settings > Lock screen & password to be able to launch Camera by pressing the Volume down button twice.

(Note: You won't be able to see your Gallery items if you launched Camera on the Lock screen without verifying your password.)

Camera modes

1. Photo

"Photo" is the default mode. You can swipe left and right to switch between different Camera modes. You'll find the button for switching between the front and rear camera on the start page as well.

2. Portrait

Switch to Portrait mode and follow the on-screen instructions to make photos with blurred background.

- Rear camera: Dual camera devices use both cameras to keep the subject sharp and blur the background.
- Front camera: Get beautiful portrait shots using software. You can make portrait shots using the front camera by pressing the special button in the Photo mode on some devices.

3. Square

Switch to Square mode to compose your shots while you're making them if you aren't sure cropping will work.

4. Panorama

Your phone takes multiple photos in Panorama mode and then combines them into a seamless shot. Tap the shutter button to start, then follow instructions. Tap again or move your phone till the end of the viewfinder area to finish.

(Note: Moving your phone too fast may interrupt the process. Stable speed and fixed angles give best results.)

5. Manual

Use this mode to set white balance, focus, shutter speed, and ISO manually.

6. Video

Switch to Video mode to shoot videos. Tap the "More" button at the top of the screen to select time-lapse and slow motion options.

7. Short video

Use this mode to shoot videos up to 10 seconds long. A special set of filters will make shooting and editing your videos before sharing them on various social media platforms much more convenient.

Tilt-shift

1. Taking tilt-shift photos

Tap the "More" button in Photo mode and select "Tilt-shift". Focused circle is available by default. Tap the button again to switch to horizontal lines.

2. Playing with the blur

You'll see a whitened area on your screen while you're shooting tilt-shift photos. This area will be blurred when you take a photo.

- Drag the focused area to move it around.
- Drag the whitened area to resize.
- Double tap the screen to make the focused and blurred areas switch places.

Timer

Tap the "More" button in Photo mode and select "Timer" to make photos with a 3-second delay after you tap the shutter button. Tap the Timer button again to set it to 5 seconds.

You'll see the countdown after you press the shutter button. Adjust shooting angle and composition during the countdown.

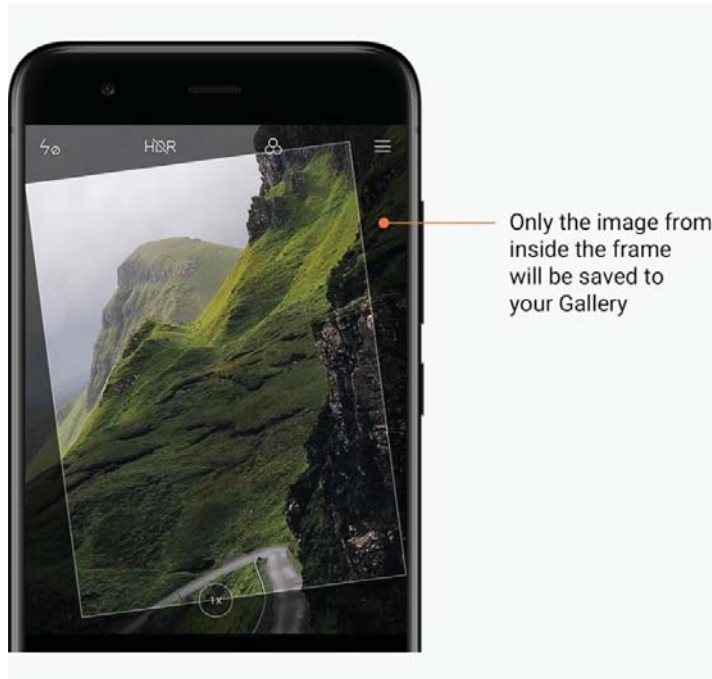
Keeping photos straight while shooting

1. Straightening the viewfinder

Tap the "More" button in Photo mode and select "Straighten".

2. About this feature

This feature allows you to always keep your shots leveled no matter how you tilt your phone. Only the image from inside the frame will be saved to your Gallery, margins will be cropped.



Group selfies

1. Turning this feature on

Tap the "More" button in Photo mode and select "Group selfie".

(Note: This feature isn't supported on some models. You can check if it's available on your device by tapping the "More" button in Photo mode.)

2. About this feature

When this feature is on, multiple shots are made while you're taking a photo. Best facial expressions of every person are then combined into a single shot.

Beautify

1. About this feature

Beautify provides multiple options for evening out skin tones and enhancing facial features in real time.

2. Using different cameras

Beautify is available both for the front and rear cameras.

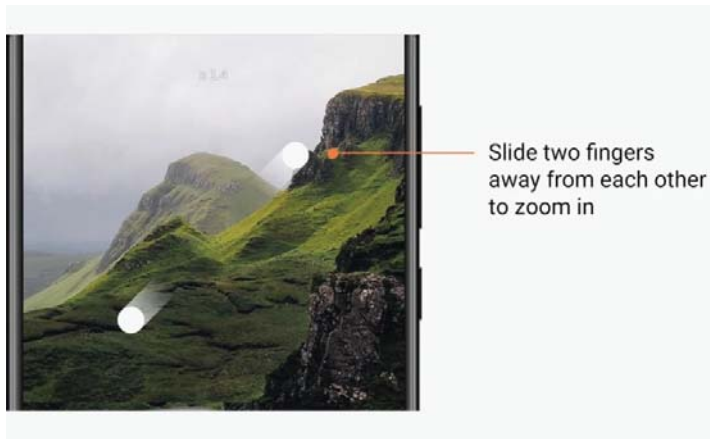
Zoom

You can zoom in and out to achieve best effect.

(Note: This feature is supported only for the rear camera.)

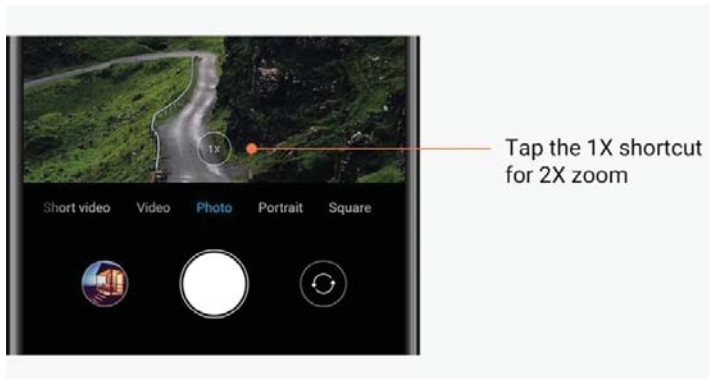
1. Gesture zoom

Slide two fingers away from each other to zoom in, bring the fingers together to zoom out.
(Note: These gestures will stop working once you've brought zoom to its highest or lowest values.)



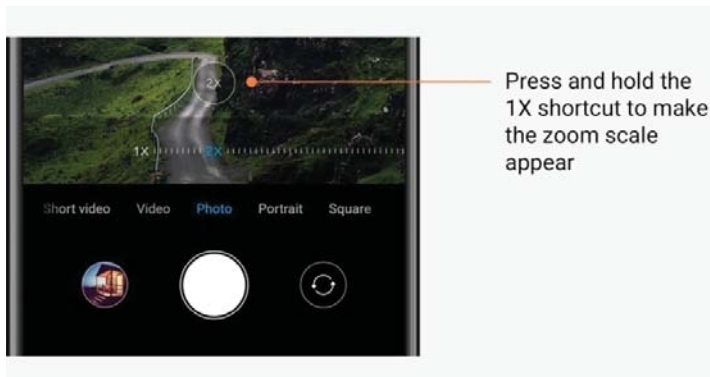
2. 2X zoom

Tap the 2X shortcut to zoom in. Tap again to zoom out.
(Note: This feature is only supported on dual camera devices.)



3. Precise zoom values

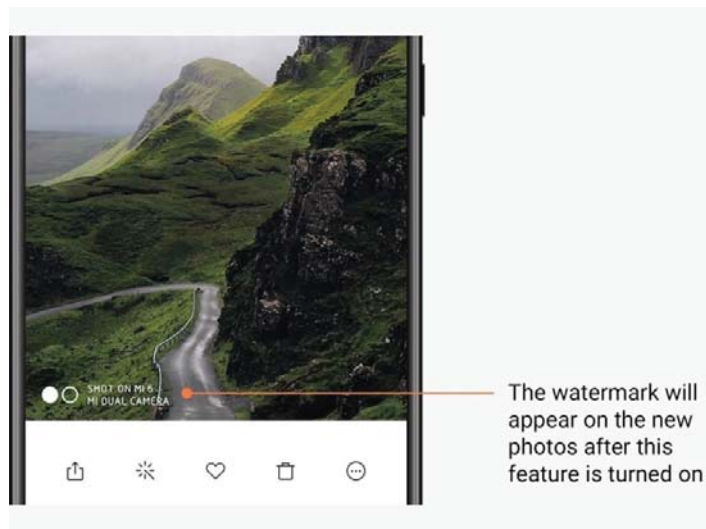
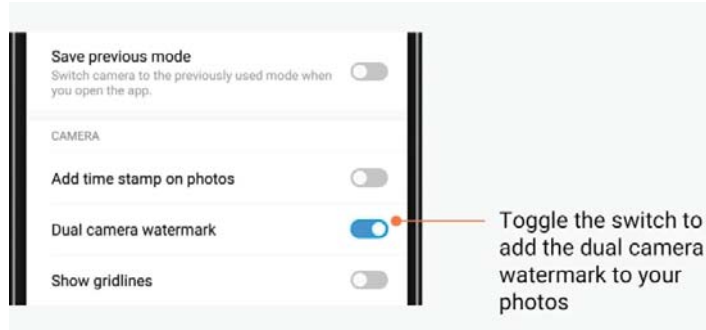
Press and hold the 2X shortcut to make the zoom scale appear.
(Note: This feature is only supported on dual camera devices.)



Time stamps and watermarks

You can add time stamps and dual camera watermarks on your photos by toggling the corresponding switches in the Camera settings. Dual camera watermarks vary for different phone models.

(Note: Dual camera watermarks aren't supported on some devices.)

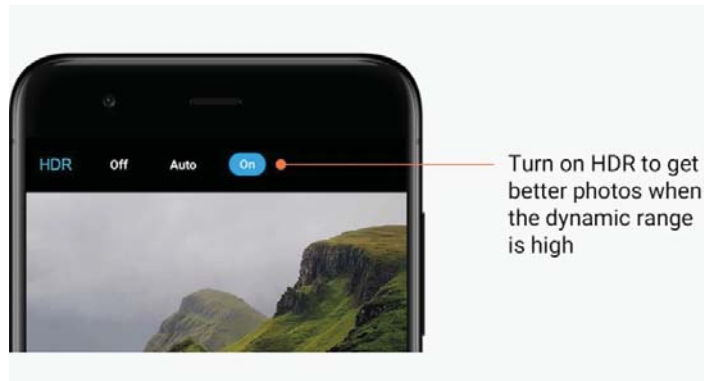


HDR

HDR is short for high dynamic range. This feature makes multiple shots in order to underexpose bright areas and overexpose dark spots and combine them together so every item on your photo is clearly visible.

You'll see the HDR icon on your screen when this feature is on. Taking photos in HDR is slightly longer than taking regular photos.

(Note: Auto HDR isn't supported on some devices.)



2-Gallery

Editor

See how you can change your photos and videos

1. Erase lines and objects

Use this feature to remove visual clutter from your photos.

This feature also helps you remove unnecessary lines by simply swiping over them.

2. Stickers

Make your selfies cooler with lots of funny stickers!

3. Doodle

You can make doodles or add different shapes to your photos.

4. Mosaic

Add different mosaic patterns to your photos if you want to hide any objects.

Free up storage space

Learn how to make your photos take less space

1. Optimize photos

Sign in to your Mi Account and turn on sync with Mi Cloud. Keeping optimized photos on your device and storing original files in Mi Cloud will free up a lot of storage space.

2. Delete screenshots

Very often you need screenshots just for a short period of time. Delete the unnecessary ones to save space for useful items.

Collage

Select 1 - 4 photos to create a collage. Multiple styles and layouts are available.

Favorites

Tap the heart icon while you're viewing a photo to add it to favorites. You'll be able to find favorites on the "Albums" tab.

Hidden album

How to use your hidden album

Swipe down on the Albums tab. You'll be asked to add a password. After this, you'll see your hidden album where all the photos you hide will be saved.

Baby album

How to use Baby album

Find a toddler on your photo and mark them as a baby. After this, you'll see your Baby album in the Albums tab.

You'll be able to share it with other family members.

Automatic backups

How to sync Gallery with Mi Cloud

Turn on automatic backups in the Gallery settings to never lose important photos and videos. You'll be able to sign in to Mi Cloud with your Mi Account on other devices (e.g. compatible TVs and computers) to browse your photos.

3-Home

1-Home

1-Lock Screen

Basic features

1. How to change Lock screen wallpaper

Go to Settings > Wallpaper, select an image, and tap "Apply".

2. How to set/change your screen lock

Go to Settings > Lock screen & password > Set screen lock, select your preferred screen lock type, and follow instructions.

Note: Remember your password. You won't be able to restore it in case you forget it. You'll have to perform a factory reset which will erase all data (including photos, contacts, and apps) on your device.

3. How to add fingerprints

Go to Settings > Lock screen & password > Manage fingerprints, and select "Add fingerprint".

Additional features

1. Adjust the time when device goes to sleep

You can set the time after which your device goes to sleep in Settings > Lock screen & password > Sleep. The default time is set to 1 minute. The longer this time is, the more power your device will consume.

2. Don't wake Lock screen for notifications

You can choose not to wake your Lock screen for notifications. The corresponding switch can be found in Settings > Lock screen & password.

Wallpaper Carousel

1. How to turn on Wallpaper Carousel

Open Settings > Lock screen & password > Wallpaper Carousel and toggle the switch. You'll get new wallpapers delivered to your Lock screen regularly.

If the default theme is applied on your device, swipe right on the Lock screen, tap "Wallpaper Carousel", and follow instructions.

2. How to create a Home screen shortcut

Wallpaper Carousel doesn't create a Home screen shortcut by default. To do that, swipe right on the Lock screen, select "Wallpaper Carousel", and tap the "More button" to see the options available to you.

3. How to use Wallpaper Carousel with themes

Wallpaper Carousel only works with the default Lock screen type. If you are using a custom theme, you can still change your Lock screen type to default in the Themes app.

2-Home Screen

Basic features

All apps you install on your device appear on your Home screen. However, it's not the only feature it provides.

1. Uninstalling apps

To uninstall an app, press and hold its icon, then drag it over the trash bin that appears at the top of the screen.

2. Changing wallpaper

Follow these steps:

- Go to Settings > Wallpaper.
- Select one of the albums.
- Select a wallpaper.
- Tap "Apply" and select "Set as Home screen".

3. Installing apps

App market of your choice will also appear on the Home screen. You can search for the apps you need there.

4. Moving app icons

Press and hold an app to pick it up, then drag it to the new location.

5. Creating new folders

Drag an app over another app to create a folder. You'll be able to edit folder's name after this.

Editing mode

You can rearrange items more effectively when you're in the editing mode.

1. How to enter the Home screen editing mode

There are three methods to enter this mode:

- Press and hold an empty spot on the Home screen
- Pinch the screen with two fingers
- Press and hold the Menu button

2. Things you can do in the editing mode

Three buttons will appear after you enter the editing mode.

- Wallpaper: This button allows you to change wallpapers faster.

- Widgets: This button allows you add widgets.
- Settings: Default screen, layout, and transition effect options.

In the editing mode, tap works for selecting items:

- Moving: Select multiple items and tap a screen preview below to move the items there.
- Uninstalling: Select multiple items and tap "Uninstall" to uninstall all of them.
- Creating folders: Select multiple items and tap "Group" to create a folder.

3-Notifications Status Bar

Basic features

1. Opening Notification shade

Swipe down from the top of the screen to open the Notification shade.

2. Rearranging toggles

Toggles for mobile data, Wi-Fi, flashlight, and other items are available in the Notification shade by default. Tap the "More" toggle to rearrange items.

Here are the features available in the editing mode:

- Rearranging toggles:

Press and hold any item to rearrange.

- Using toggles:

Tap any toggle to turn the corresponding feature on or off.

3. Wi-Fi settings

Tap the name of the Wi-Fi toggle to be able to switch between Wi-Fi networks quickly.

4. Bluetooth settings

Tap the name of the Bluetooth toggle to manage connected devices.

App notifications

1. How to manage app notifications

Go to Settings > Notifications & status bar > App notifications, and tap any app to see what notifications it's allowed to send.

2. Notification permissions

- Show notifications: On by default. Turn off to restrict all notifications from this app.
- Rules for grouped notifications: Smart notification filter. Use "Recommended" mode if you aren't sure which one suits a particular app best.
- App icon badge: Turn on to allow badges with the notification count on app icons.
- Floating notifications: Turn on to allow important notifications on top of everything else.
- Lock screen notifications: Turn on to allow important notifications on the Lock screen.
- Sound: Turn on to play notification sounds.
- Vibration: Turn on to allow vibration for notifications.
- Notification light: Turn on to use LED light for notifications

Notifications folder

1. How are notifications filtered?

MIUI learns what you do with the notifications from individual apps and decides whether the notifications you receive are important or unimportant. Unimportant notifications are placed in a separate folder.

2. How to stop filtering notifications

Just toggle the switch in Settings > Notifications & status bar.

3. How to make particular notifications that were marked as unimportant appear again

Go to Settings > Notifications & status bar > App notifications, tap the app, select "Rules for grouped notifications", then tap "Important".

Other features

1. Battery indicator

Select which indicator to show in Settings > Notifications & status bar > Battery indicator.

2. Show connection speed

Toggle the switch in Settings > Notifications & status bar to show connection speed in the status bar.

3. Edit carrier name

You can customize your carrier's name in Settings > Notifications & status bar > Edit carrier name.

4-Global App vault

1. About App vault

App vault brings all the important notifications and app features together. Just swipe right on the Home screen to access the features you need most.

2. Features

App vault is a set of cards with most popular features of MIUI.

3. Shortcuts

Shortcuts allow you to use the features of your favorite apps without wasting time on launching them and looking for the feature you need in the UI.

4. A brief note

Taking notes is way more convenient when all you have to do is just to fill in a blank card that's right in front of you.

5. Stocks

Use the Stock card in App vault to get instant updates on the companies you follow.

6. Messaging

App vault brings messages from several messaging platforms to a single card.

7. Calendar events

On this card you'll find all your meeting dates, appointments you made, and your friends' birthdays.

8. Recommended apps

Here you can find fresh apps that are becoming popular right now.

5-Split screen

1. How to open apps in Split screen

Open the apps you'd like to use and follow the steps below:

- Tap the Menu button to open Recents.
- Tap "Split screen".
- Press and hold the first app and drag it to the highlighted area. Tap the second app.

2. How to exit Split screen

- Method 1: Open Recents and tap "Exit" at the top of the screen.
- Method 2: Drag the separator all the way up or down.

3. How to make apps switch places

When apps are opened in Split screen, double tap the separator to make the apps switch places.

6-Quick ball

1. Turning on Quick ball

You can turn on Quick ball in Settings > Additional settings > Quick ball.

2. Selecting shortcuts

Quick ball has 5 customizable shortcuts. You can select yours in Settings > Additional settings > Quick ball > Select shortcuts.

3. Selecting preferred gesture

You can choose between two gestures to operate Quick ball. Tap and swipe are available.

4. Hiding Quick ball

Select apps for which Quick ball will be hidden automatically.

5. Full-screen mode

You can choose to move Quick ball aside when your device enters full-screen mode.

6. Inactivity

Quick ball can stick to the edge of your screen if you aren't using it for 3 seconds.

7. Lock screen

Besides the Home screen, Quick ball can be also shown on your Lock screen.

4-Tools

1-Content Services

Browser

1. Tools

Tap "More" > "Tools" to see the options available to you.

- Save page: This feature allows you to save web pages as screenshots or HTML files and come back to them when you're offline.
- Find on page: Use search to quickly locate keywords on the page you're browsing.
- Reduce data usage: Turn on this feature to restrict loading images automatically when you aren't connected to Wi-Fi.

2. Tabs

Tap the icon below to view all open tabs. You can preview, close, or open new tabs in this mode.

3. Incognito mode

You can switch to incognito mode while previewing all the opened tabs. Your browsing and search history won't be saved in incognito mode. However, the files you download and bookmarks you add will still be saved.

4. Bookmarks

You can add the page you're currently browsing to bookmarks. It can be saved to the start page or your Home screen.

5. Bookmarks on the start page

While on the start page, you can add recently viewed pages or custom URLs to bookmarks.

6. News feed

Swipe left and right to switch between channels in your News feed. Tap the globe icon to change the preferred language of your News feed. English, Hindi, and Tamil are available.

7. Sharing webpages

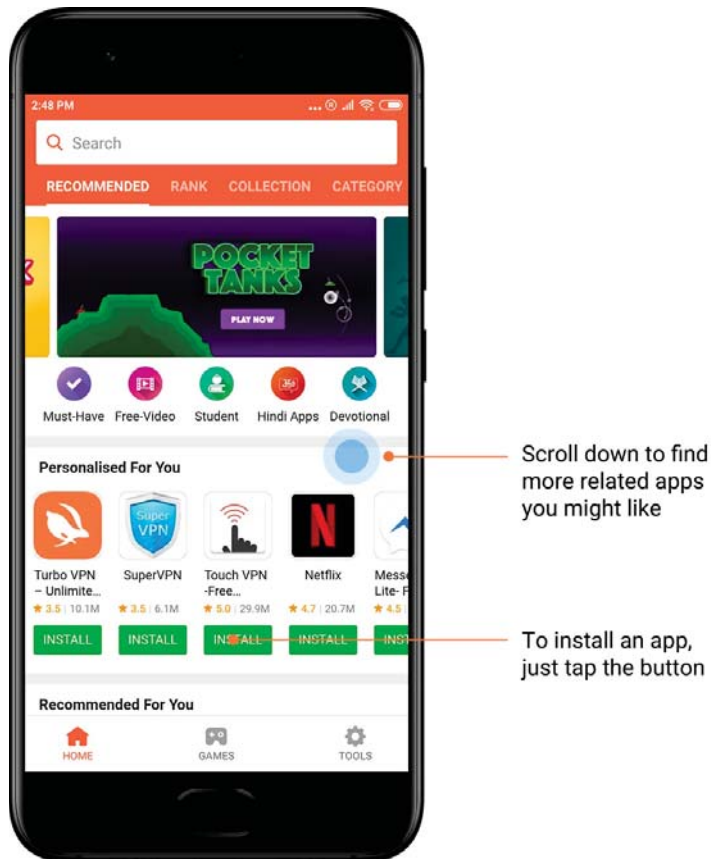
You can share webpages from Browser to multiple platforms, including Facebook and WhatsApp.

Mi Apps

1. Installing apps

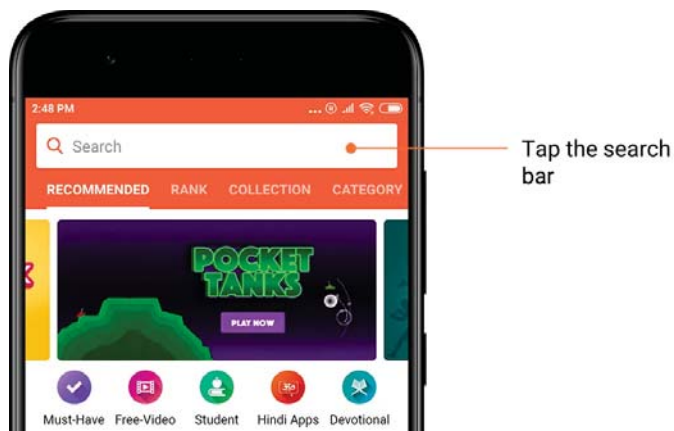
Mi Apps is a platform where you can find lots of cool Android apps for your device.

You don't need to sign in, all apps are free to download and 100% secure. All you need to do is open "Apps" and tap "Install" next to the app you like.

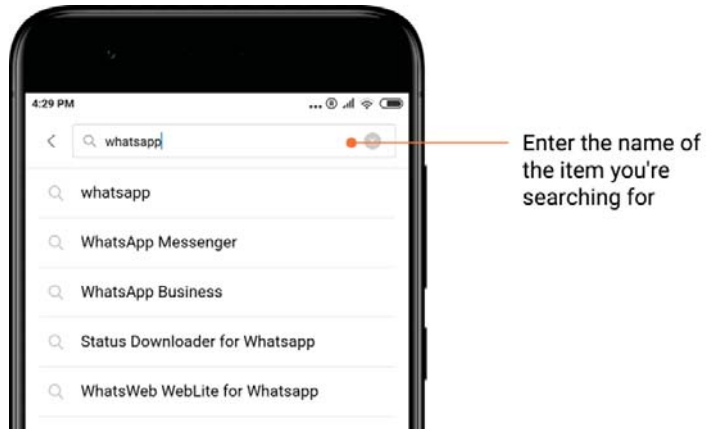


2. Searching for apps

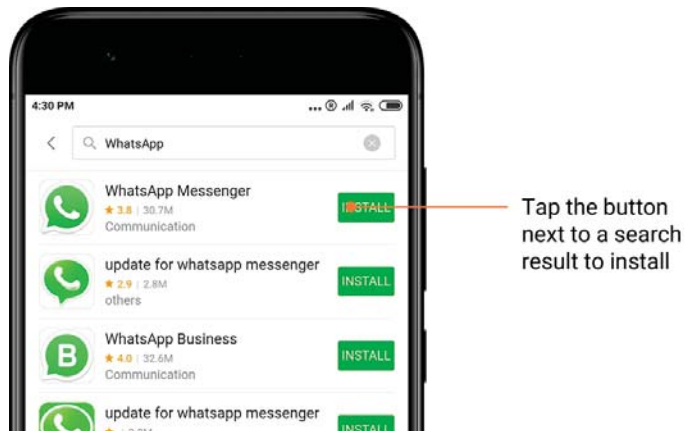
Use search to quickly find the apps and games you're looking for. Enter the name of the item into the search bar and get instant results. You can install apps directly from the list of search results.



Enter the name of the item you're searching for.

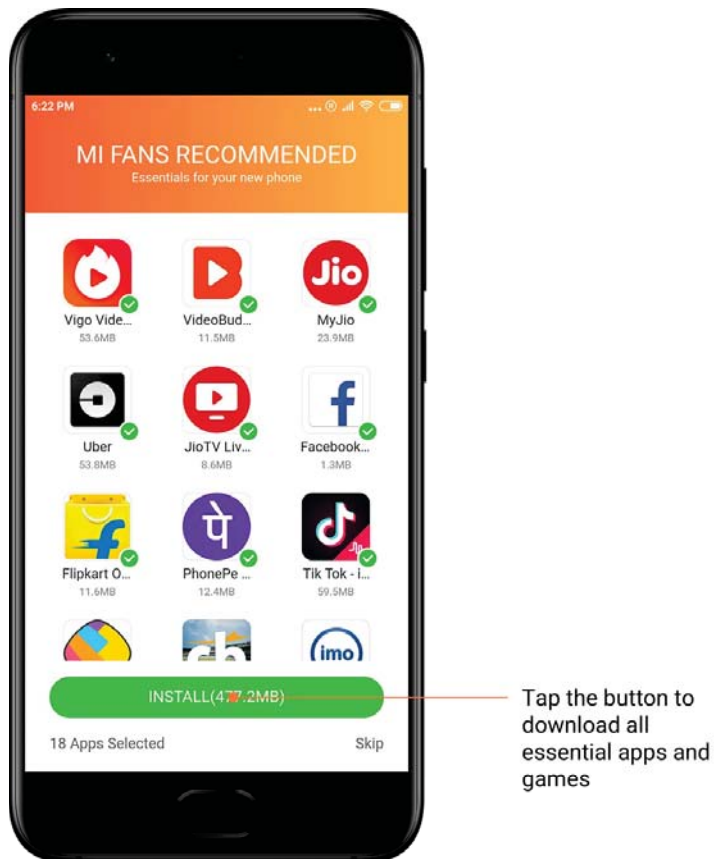


Tap the button next to a search result to install.



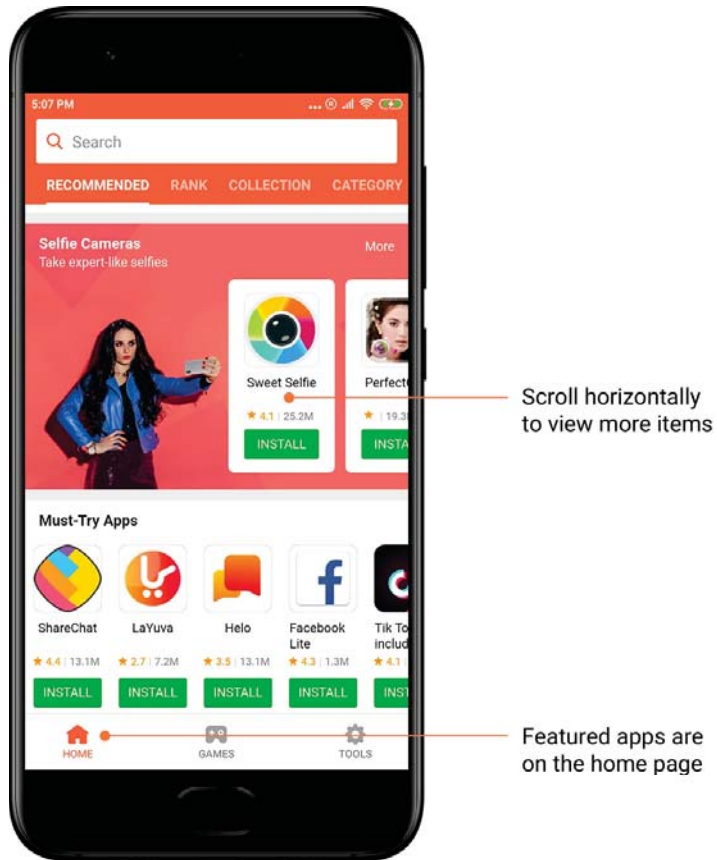
3. Must-have apps

When you open Mi Apps for the first time, you'll see the list of must-have apps we recommend. You can install them all in one tap without searching for individual items multiple times.

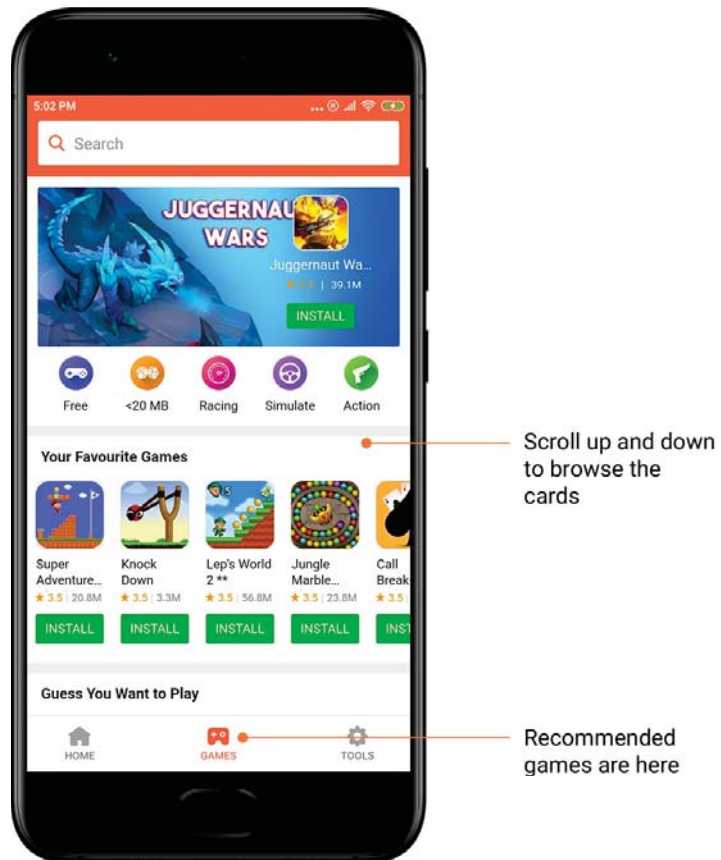


4. Recommendations

In Mi Apps, you'll be able to find lots of apps, games, collections, articles, and videos recommended to you.

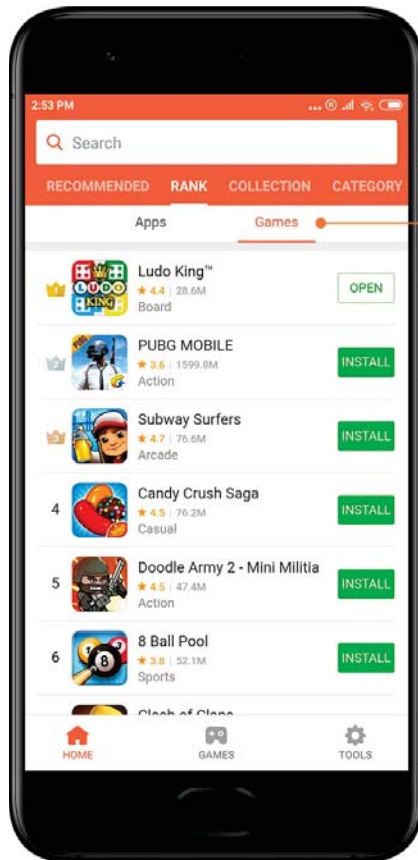


Scroll up and down to browse the cards.



5. Rankings

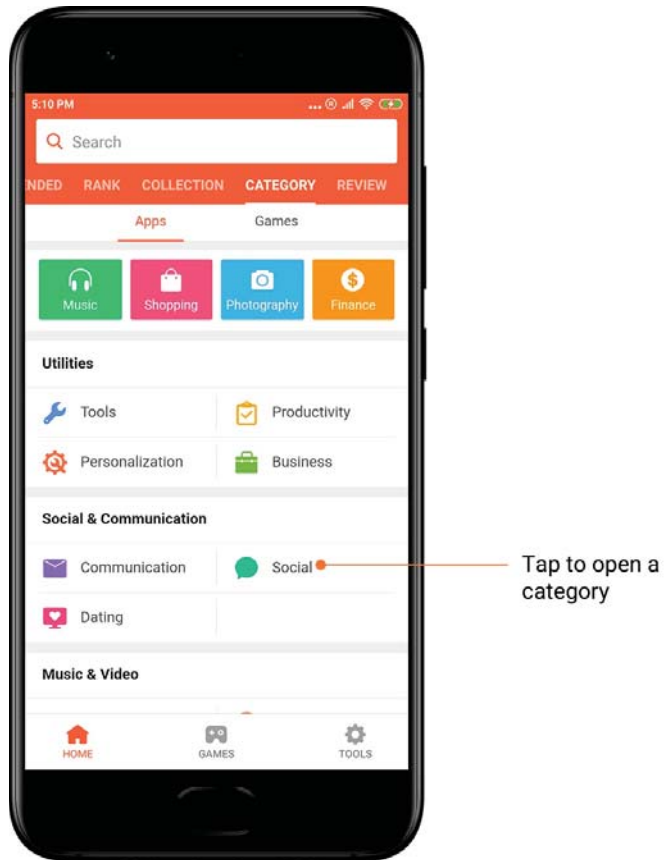
Tap "Rank" to see all apps and games ranked from most to least popular.



Separate charts
for apps and
games are
available

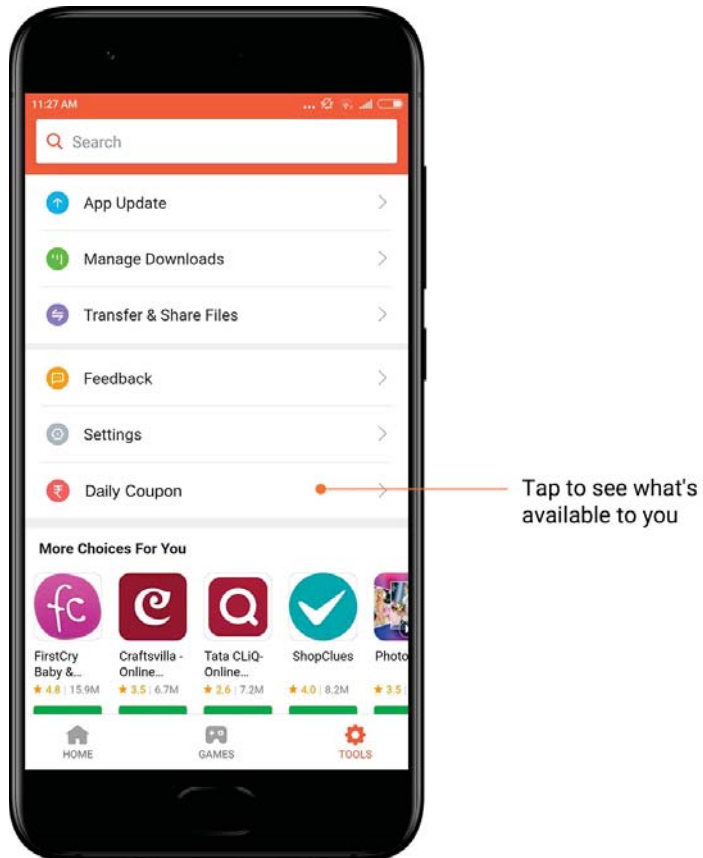
6. Categories

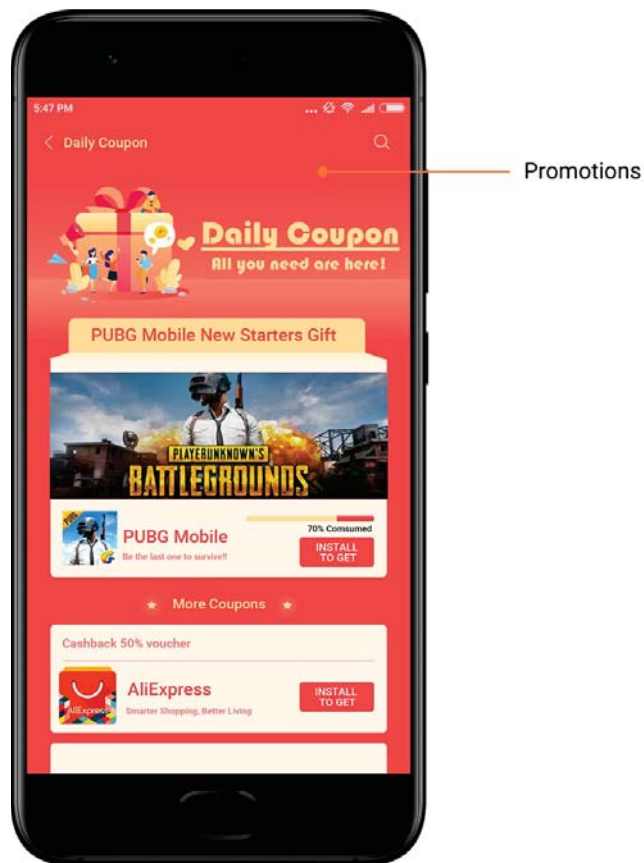
Categories will help you decide which app or game among multiple similar ones works best for you. You'll find all you need in the 17 games and 33 app categories.



7. Promotions

This part of Mi Apps has all the latest offers, promotions, and discounts. Here you can complete tasks to get coupons for your purchases.





Mi Music

1. My music

You can find recently played songs, favorites, and playlists in "My music".

2. Local player

You can see all the songs saved on your device on the "My music" page. Just tap any song to play it.

There are multiple ways to display your local music: by song title, artist, album, or folder. You can also sort items by song title, adding time, and the number of times played.

3. Player

Tap the button on the start page to open player.

Player controls include the following options: play, pause, next/previous song, loop, shuffle, download, add to favorites, queue, and lyrics.

The "More" menu has more additional options: share, headphones & audio effects, sleep timer, set as ringtone, and more.

4. Search

Tap the search bar and enter keywords to search for songs, artists, albums, and playlists.

5. Settings

You can access settings using the side menu. Here you can find account settings, file filter, and update settings.

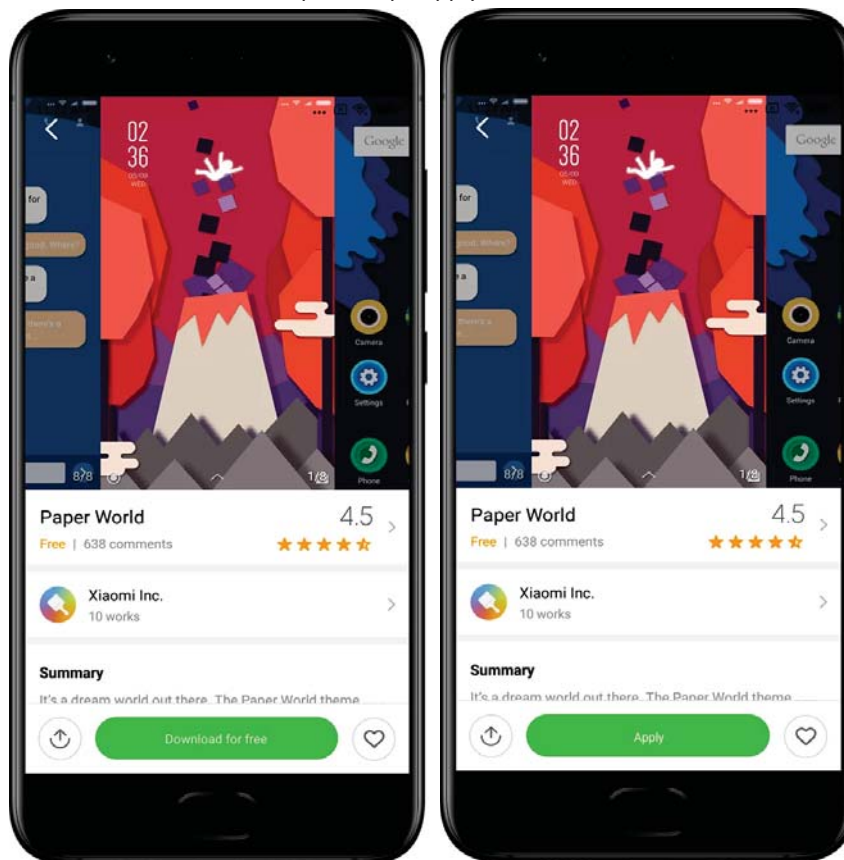
Themes

Themes will give your phone a new look.

Themes is the official personalization platform of MIUI with thousands of high-quality themes created by skilled designers. Besides the familiar themes, wallpapers, ringtones, and fonts, you'll be able to find lots of other personalization options for your Lock screen and Home screen.

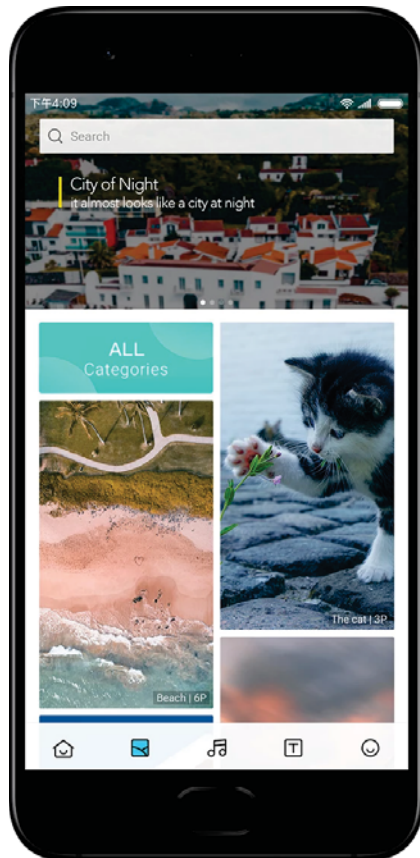
1. Themes

- Open the app to view the available themes. Tap any theme to view details.
- On the details page, swipe left and right to see previews. Tap "Download" below to download the theme.
- After the download is complete, tap "Apply" the theme.

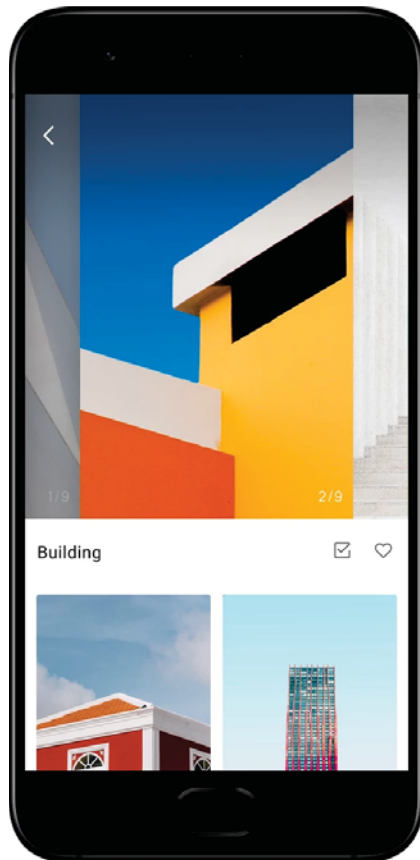


2. Wallpaper

- Open the app and tap the button below to view available wallpapers. Tap any wallpaper to view its preview.

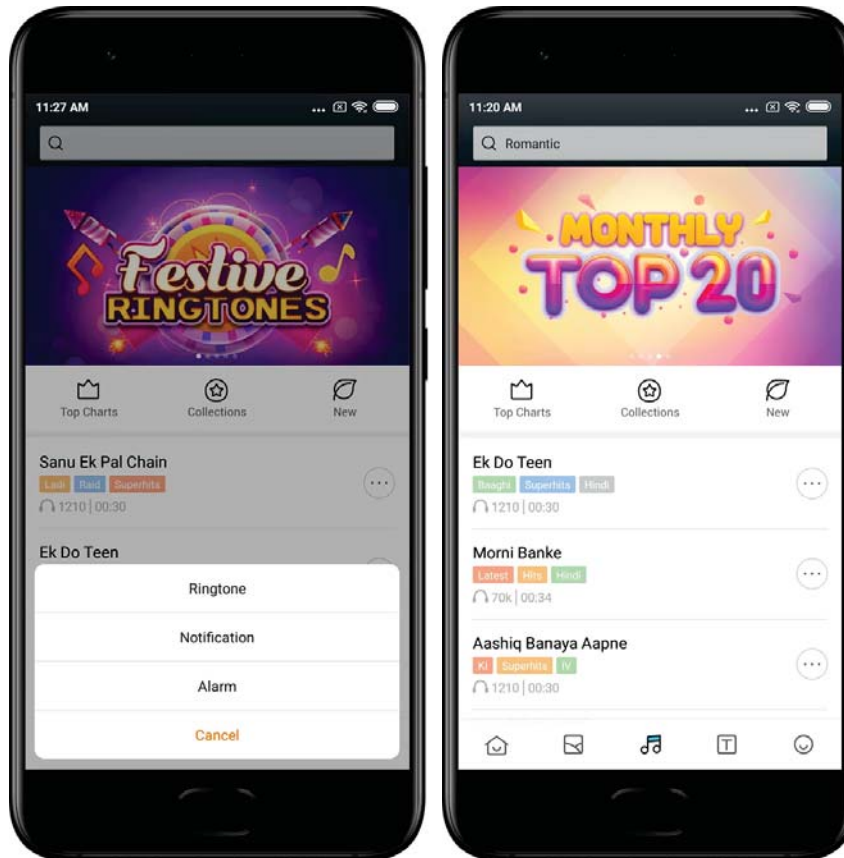


- Swipe left or right to switch between previews. Tap "Apply" to apply the wallpaper.
- Select where you'd like to apply the wallpaper.



4. Ringtones

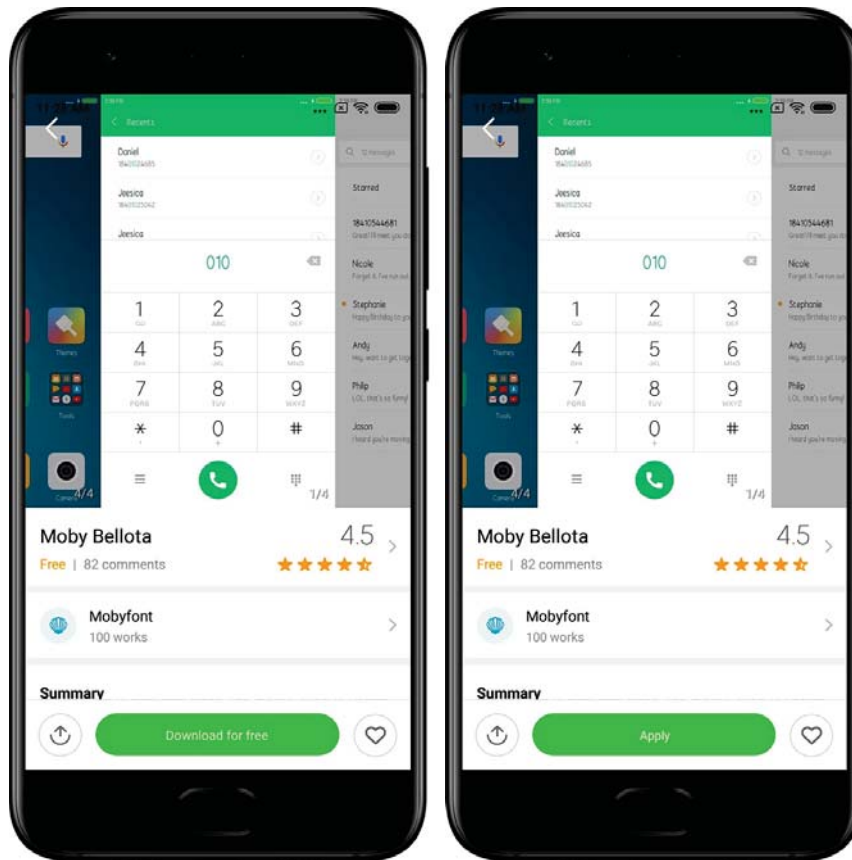
- Open the app and tap the button below to view available ringtones. Tap any ringtone to listen.
- Tap the "More" button next to a ringtone to view available options.
- Select where you'd like to apply the ringtone.



5. Fonts

- Open the app and tap the button below to view available fonts. Tap any font to view details.
- Swipe left or right to see previews. Tap "Download" below to download the font.





2-File Manager

File Manager

1. Quick search
Recent files on the start screen are arranged according to the creation date. They are also sorted by file type and can be edited by default.
2. Storage stats
Learn what files occupy the internal storage of your device at a glance and see all the items in the root folder.
3. Cleaner
Delete unnecessary files and free up storage space in two taps.
4. Transferring files
Built-in Mi Drop functionality allows you to share files with nearby devices without connecting to the internet.

Local backups

1. Creating a backup

Go to Settings > Additional settings > Backup & reset > Local backups, tap "Back up", select system settings and apps you'd like to back up, and tap "Back up" again. Creating backups might take several minutes.

2. Restoring items

Go to Settings > Additional settings > Backup & reset > Local backups, select system settings and apps you'd like to restore, and tap "Restore".

3. Encrypting backups

If you want to create an encrypted backup, tap the lock next to the "Back up" button. You'll have to sign in to your Mi Account to access encrypted items.

4. Auto backups

Go to Settings > Additional settings > Backup & reset > Auto backups, set your backup schedule, and select the items you'd like to back up. Auto backups will appear in the list of your local backups.

3-Other

Feedback

You can report the issues you encounter while using your device to our developers. Your suggestions on how to improve MIUI are welcome, too. We always do our best to fix the issues you report in the upcoming updates.

1. How to open Feedback

You can access the Feedback app using one of the two following methods: Tap the Feedback app icon on your Home screen. Go to Settings, scroll down, and tap "Feedback" at the very bottom.

2. Submitting feedback

Check one of the boxes before describing your issue. Use "Issues" for bugs and "Suggestions" for improvements.

Describe the issue you've encountered. You can add images, screen recordings, and logs to your report.

Select the item your feedback is referring to so we can locate the issue.

If you're reporting a bug, tell us its reproductivity percentage.

Tap "Submit" to submit your feedback.

3. Viewing progress

Tap "My feedback" in the upper corner of the start page to view the issues you reported.

Tap any issue to view progress.

If our developers comment your feedback, you can reply to them from the details page of the issue.

4-Tools

Calendar

Traditional Indian calendar is very popular. It's used along with the Gregorian calendar today. The info from the traditional calendar is shown on a separate card each day.

Daily Panchang info, including Tithi, Samvat, and Muhurt is available.

1. Important dates

You can view the info on all the important dates in Calendar directly. You'll be notified about holidays and important events.

A separate card with detailed information is created for all festivals. You can open it by tapping the notification or the App vault card.

2. Daily greetings

A card with daily greetings can be shared to WhatsApp, Facebook, ShareChat, and other platforms.

3. Horoscope

Horoscopes for all zodiac signs are available in English.

4. Cricket card

Cricket is extremely popular in India. You can stay up-to-date with the match schedule and game scores using our special card.

5. Health & fitness, Today in history, and Football cards

Get latest news and recommendations on a wide range of topics using our cards.

Clock

1. Adding alarms

Open the Clock app and tap the plus on the start page to add an alarm. Choose whether you're adding a repeating alarm, select your ringtone, and tap "Done".

2. World clock

Adding custom clocks

In the Clock app, open the "Clock" tab and tap the plus to add a clock for a specific location to your list.

3. Checking geographic location

Tap any city from your list to see where it's located on the map.

4. Stopwatch

Open the Stopwatch tab and simply tap the start button to use the stopwatch. Tap the flag button to record time. You can pause and resume your stopwatch as well. Press "Stop" to reset your stopwatch.

5. Timer

Setting a timer

You can set times with duration from 1 second to 99 hours 59 minutes and 59 seconds. Tap the button below to start your timer.

Ambient noises

You can listen to one of the ambient noises for a set period of time. You can also choose to silence the alarm at the end of an ambient noise timer.

Weather

1. Viewing weather info

Open Weather app to view the current weather info and the 5-day forecast.

24-hour forecast, wind speed and direction, real feel, UV index and pressure are also displayed on the start page.

2. Managing locations

Tap the plus at the bottom of the start page to search for cities.

Tap the plus again and use the "Edit" button to delete cities.

3. Weather settings

Tap the "More" button at the bottom of the start page to open settings. You can set your preferred temperature and wind speed units, as well as allow or restrict the app to update weather info at night.

4. Sharing weather info

Tap the "More" button at the bottom of the start page, then tap "Share" to send the weather info to your friends.

Security

Cleaner

1. Clearing trash

Cleaner is one of the features that Security uses to remove trash from your device. You can delete useless items that are stored on your phone to make sure your device works fast and productively.

· How to clear trash

Open the Security app and tap "Cleaner". This will launch an automatic scan for trash, including these 5 major categories: cache files, obsolete files, installation packages, residuals, and memory cache. Once the scan is complete, you can choose which items to clean up.

After the cleanup is done, you'll be able to see the report which gives you the details of your storage usage and suggests other options which may help you free up more storage space.

· Adding items to exceptions

You can add the items you don't want to be deleted to exceptions. When the scan is complete press and hold an item and select "Add to exceptions". This item will be ignored during the future scans.

· Different ways to use Cleaner

Besides using Cleaner proactively, you can also receive notifications when trash on your device reaches the set limit. Tapping the notification will launch Cleaner automatically.

2. Cleaner settings

You can set reminders and switch between scan definitions in the settings.

· Choosing scan definitions

Scan definitions from the two service providers are available to you. You can choose between Tencent and Clean Master.

· Reminders

Turn on the "Remind to clean" switch to set trash size limit and schedule alerts. Once the amount of trash on your phone reaches the limit, you'll receive a notification alerting you to use Cleaner. You can also customize the alert frequency.

· Update Cleaner's database automatically

We may update the scope of the Cleaner's engine at irregular intervals. Turn on automatic updates to make sure that you're using the most recent definitions and clean up your device more effectively.

Basic scan

1. Basic scan

Basic scan is a functional module that can promptly detect security risks on your device. It checks for 3 basic threats: system security risks, unnecessary processes, and malware. It can also help you promptly discover if your phone has any items that can be optimized, and helps you detect your phone's problems quicker.

- Checked items

System security sub-scan checks for permission-related issues, Trojan horses, installation problems, and system updates. It can help you understand whether your phone has any risks, and handle them promptly.

The second sub-scan stops unnecessary chained launches and cleans no longer useful cache.

The third sub-scan can filter spam and check payment environment.

- Scan results

After the scan, you'll see the score which indicates your phone's security level. Scan results will also reveal unsafe items, and you'll be able to choose whether to optimize your device.

2. Security scan settings

You can choose to create a Home screen shortcut, or select items to optimize from the list of recommendations.

Security scan

1. Security scan

Security scan is an app that scans your phone to see if it has any hidden viruses or malicious apps.

It combines a virus scan and payment security scan, comprehensively ensuring your phone's security.

- Scanned items

Security scan solves the issues related to Wi-Fi, payments, privacy, and viruses. It ensures that dangerous apps and viruses in your phone's memory are discovered as soon as possible.

- Payment security

When apps with a payment function are launched, payment security features are launched by default. You can add payment apps that you want to manage on the results screen.

2. Security scan settings

Various virus definition and update options are available in the settings.

- Antivirus definitions

Antivirus definitions provided by Avast, Tencent, and AVL are available.

- Installation monitor

Turn on the switch "Scan before installing" to check the apps that are being installed for viruses and malware.

Manage apps

1. Uninstalling apps

You can uninstall multiple apps using this feature.

Select the apps and tap the button below to uninstall them.

2. Checking app status

You can sort your apps using different parameters.

Here are the parameters available now:

- Status
- App name
- Usage frequency
- Used storage
- Installation time

Default apps

Tap the "More" button at the top corner of the screen and select "Default apps" to assign custom apps to various system features.

2. Permissions

Autostart

You can manage an app's autostart behavior preventing abnormal power consumption.

Set the app's control switch to "off" to restrict autostart.

Tap the "More" button at the top of the screen to manage autostart permissions for system apps.

App permissions

Here you can manage the permissions of all apps installed on your device.

Managing permissions for individual apps

You can check all of the permissions an app has by tapping the app. The switches located next to every permission allow you to quickly give or restrict access.

You can also sort permissions by type to check all apps having a specific permission.

Permissions

1. Autostart

You can manage an app's autostart behavior preventing abnormal power consumption.

Set the app's control switch to "off" to restrict autostart.

Tap the "More" button at the top of the screen to manage autostart permissions for system apps.

2. App permissions

Here you can manage the permissions of all apps installed on your device.

3. Managing permissions for individual apps

You can check all of the permissions an app has by tapping the app. The switches located next to every permission allow you to quickly give or restrict access.

You can also sort permissions by type to check all apps having a specific permission.

Game speed booster

1. How Game speed booster works

- Optimization: This feature clears memory reserved for the background processes to give more space for the game.
- Network: Game speed booster increases the game's connection speed by limiting the bandwidth of background downloads, reducing network delay.
- Concentration: Notifications will be hidden, buttons will be turned off. Nothing will distract you!

You can also create a Home screen shortcut so Games speed booster always stays just a tap away.

2. Adding games

You can add the games that will work with Game speed booster on the start page.

3. Booster settings

Launch a previously added gaming app on the start page to turn on Game speed booster automatically.

You can also limit the speed of background downloads, restrict sync, and make sure your device doesn't switch between networks while you're playing.

Deep clean

1. How to use Deep clean

Open Security and scroll down until you see "Deep clean". This feature gives you a clear image of how your phone's memory is being allocated and how trash is being distributed.

· Photos

Deep clean can detect duplicate photos and poor-quality images in your Gallery. You can choose to delete redundant items.

· Apps

Learn what apps haven't been used in a long time, and uninstall them.

· App data

Understand how each app on your phone uses storage. You can free up storage space using this feature.

· Big files

Big files you aren't aware of start to pile up after you use your phone for some time. This feature ranks them by size. You can also see what apps generated these files here.

· Videos

Here you can see all videos that are saved on your phone. You can delete the unnecessary ones to free up storage space.

2. Deep clean settings

Scan definitions from Tencent and Clean Master are available. You can also add items to exceptions in the settings.

Battery usage

Test the phone's power consumption and optimize battery-related items with a single tap to increase your phone's battery life.

- Open Security and tap "Battery usage" to see how your device consumes power.
- After the scan, you'll be able to check the battery level, temperature, and capacity. Any issues you find can be solved by simply tapping the button at the bottom of the results page.
- Check optimized items and choose the power consumption problems that need manual optimization.
- Optimization is complete.
- Turn on Battery saver to reduce apps' background activity, stop sync, and minimize system animations. You can also schedule Battery saver to turn on and off.
- Battery use allows you to check the power consumption status of different apps and hardware elements.

Test network

1. Find and solve network-related issues

Whenever you encounter problems with the network, you can run a test of the current network conditions.

- It tests the following items:
- Wi-Fi connection
- Network protocols
- Network connection
- Restricted connections
- Background connections
- DNS settings
- Router

After you see the results, you'll be able to resolve the current network problems step by step.

2. Quick Wi-Fi speed test

Tap the "More" button at the top of the screen to conduct a Wi-Fi speed test. Download speed of your current Wi-Fi access point will be checked.

3. Close connected apps

All apps currently connected to the internet are shown in the test results. Just tap an app to close it.

Blocklist

1. Blocked messages and calls

Blocklist automatically filters all types of spam, phishing, and marketing calls and messages for you. This screen displays the history of your filtered SMS messages and incoming calls.

- SMS

Highlighted phone numbers indicate unread messages. Phone numbers will go from red to black after you read corresponding messages.

Tap a message to read it. You can unblock and restore all messages sent from a particular number, or reply to messages directly.

Tap the "Edit" button or press and hold any SMS message to unblock or delete multiple messages.

Tap "Read all" to mark all messages as read.

- Incoming calls

Tap a call history record to view the complete history for a particular phone number. You can choose to unblock this number, return the call, or send an SMS message.

Tap the "Edit" button or press and hold any record to unblock or delete multiple items.

2. Blocklist settings

- Blocklist switch

Toggle this switch to turn Blocklist on and off. Once it's turned off, it will no longer automatically filter spam phone calls and messages.

- Blocked numbers and exceptions

You can use phone numbers, prefixes, and locations to establish which incoming calls and messages you want to block/allow.

Tap "Blocked numbers"/"Exceptions" to add or edit items.

- Blocklist notifications

You can choose whether the Notification shade should display the content from a blocked call or message.

- Automatically update SMS filter

You can also tap "Update" to sync manually.

- SMS blocklist settings

You can choose to block, filter, or allow messages from strangers and services. Options for contacts are also available.

Add keywords to blocklist and exceptions to block or allow messages containing specific words.

- Call blocklist settings

You can choose to block or allow calls from strangers, forwarded calls, calls from abroad, and calls from reported numbers. Options for contacts are also available.

- SIM 2 settings

You can establish whether the same rules should be applied to SIM card 2, or set up different rules.

App lock

1. Setting password

Use App lock to protect the data of individual apps and your privacy.

Open Security and tap "App lock" to set your password. Password type is set to pattern by default.

Changing password type

When you set your password, tap "Change password" to switch between different password types. Pattern, PIN, and combined password are available now.

Adding your Mi Account

After setting your password, you can choose to add your Mi Account. If you forget your App lock password, you'll be able to reset it using Mi Account.

We strongly recommend adding your Mi Account if you use App lock. Unless you add your account, you'll be able to reset your App lock password only by performing a factory reset.

Using fingerprints

You can use the fingerprints recorded on your device for App lock verification. You'll have to confirm your password once again if you add a new fingerprint.

You won't be able to use fingerprints for App lock verification.

2. Protecting apps with App lock

When you use App lock for the first time, the feature will check what apps are installed on your device and recommend the ones that might require protection.

Just toggle the switch next to an app's name to add or remove App lock protection.

Tap the Search box at the top of the screen to search for apps.

3. App lock settings

App lock switch

Toggle the switch to add or remove App lock protection. When you toggle the switch off, protection will be removed from all apps along with the App lock password.

When App lock is applied

You can choose when exactly App lock is applied. 3 options are available now.

- When device is locked: Once verified, App lock won't be applied until you lock your device and open a protected app after unlocking.
- When device is locked or after exiting the app: You'll have to verify your App lock password after you unlock your device or exit a protected app.
- When device is locked or in 1 minute after exiting app: You'll have to verify your App lock password after you unlock your device or fail to reopen a protected app within 1 minute after you left it.

Changing password

You can change the App lock password type and the password itself.

Unlock with fingerprint

If you don't want to use your fingerprint with App lock, you can toggle the corresponding switch. You'll have to verify your fingerprint if you decide to turn on this feature again.

Hide content

App lock allows you to hide notification content on the Lock screen and in the Notification shade for individual apps. You'll see all compatible apps after you tap "Hide content" in the settings.

You'll see "You have a new message" instead of the actual content when this feature is on.

Unlock all apps at once

This feature allows you to unlock all protected apps by entering the password only once.

Add Mi Account

You can add your Mi Account to be able to reset your App lock password.

4. Verifying your App lock password

When App lock is on, a dialog which requires entering the password will appear after you open a protected app.

You can enter the password or use your fingerprint to unlock the app.

Tap "Forgot password" to reset your App lock password. The options available to you may vary depending on whether you added your Mi Account before trying to reset the password.

If you don't want to open the app, tap the "Back" button in the upper corner of the screen to close the verification dialog.

Dual apps

- Dual apps allow you to clone an existing app on your device and use it independently with a different account.
- You can create dual apps in Manage apps > Dual apps. There you'll see a list of compatible apps installed on your device.
- Besides the installed apps which are compatible with this feature, you'll also be able to see the apps we recommend. Use the switch next to an app's name to create a dual app.
- Use the search bar at the top of the screen to search for the apps installed on your device.
- All dual apps have their own Home screen shortcuts. There's a dual app icon in the corner of the shortcut which might help you tell one app from another.
- Whenever the system requires an action from an app that has a dual app, you'll be asked which app will be used.

Uninstalling dual apps

You can uninstall dual apps just like you uninstall the regular ones. Additionally, you can also toggle the switch of the corresponding app in Security to uninstall.

All app data of the dual app you uninstall will be deleted.

Dual app accounts

If a dual app complies with Google's multiple account interface standards, you can add and sync dual app accounts on this page, as well as customize their settings. The settings for third party apps may vary.

Notes

1. Creating a note

Open the app and tap the plus to add a new note. Notes support adding text, images, and audio.

2. Voice memos

Tap the sound wave icon to make an audio recording and save it in your note.

3. Features

You can use templates, add images, checklists, and voice memos, as well as format text in Notes.

You can also share your notes as text or images on various platforms.

Press and hold any note to set a reminder, hide it, or add it to a folder.

4. Deleting notes

Open a note and tap the "More" button to delete it. You can also swipe up with two fingers to perform this action. Press and hold a note to be able to delete multiple notes.

5. Restoring deleted notes

To view deleted notes, tap "Notes" on the start page and select "Trash". Tap the note you'd like to restore.

If you can't find the note you need, try looking for it on i.mi.com.

6. Folders

Tap "Notes" on the start page for the dropdown menu to appear. You can create folders here.

You can also move notes to new folders.

7. Search

Enter keywords into the search bar on the start page to find specific notes.

8. Hidden notes

Swipe down starting from the upper part of the screen and stopping in the middle to view hidden notes.

9. View

Tap the "More" button on the start page to switch between list and grid view.

Recorder

1. Recording audio

Open the app and just tap "Record" to start recording audio. You can pause and resume the process, as well as mark specific segments while you're recording.

2. Viewing your recordings

Tap "Recordings" to see all the recordings you've made.

3. Settings (may vary on different devices)

Tap the Settings icon in the upper corner to view available options. Here you can set recording quality, allow using receiver to play audio, and more.

Screen Recorder

1. Screen Recorder

You can find Screen Recorder in the "Tools" folder on your Home screen. Open the app and tap the red button to activate Recorder. "Start" button will appear in the corner of your screen. Get ready and tap this button to start recording.

2. Finish recording

Tap the "Stop" button on your screen to finish recording.

3. Cancel recording

Tap "x" on the "Start" button if you want to cancel recording and quit Screen Recorder.

4. Managing videos

The videos you record will appear on the start page of Screen Recorder. Here you can view and edit them.

5. Settings

- Resolution: You can record videos with different resolution. Videos with higher resolution look sharper.
- Video quality: Better video quality means crisper picture and bigger file size.
- Frame rate: Higher frame rates reduce motion blur in your videos, but require more system resources. Your device may overheat when you record long videos with high frame rates.
- Orientation: Set orientation to portrait or landscape, or choose the "Auto" mode.
- Sound source: Record silent videos or add microphone/system sounds.
- Lock screen to end: Lock your device to finish and save the ongoing recording.
- Show touch gestures: White dots will appear throughout the recording to show the places that you touched on the screen.
- Visualize navigation buttons: Show prompts when pressing Home, Menu, and Back buttons.

Calculator

1. Basic calculator

Basic calculator is the first thing you see when you open the app.

2. Scientific calculator

Open Calculator and tap the toggle to switch to the scientific calculator, which can perform operations with trigonometric functions, angular radians, and roots.

3. Converter

This feature allows you to convert currencies as well as multiple units of measurement.

4. Mortgage calculator

With adjustable repayment methods and interest rates, mortgage calculator makes planning your finances much simpler.

Compass

1. How to calibrate your device

Compass will suggest that you calibrate your device after it detects significant interference. Just follow the instructions on your screen in such cases.

2. Compass

Place your device on a horizontal surface to see the compass face.
Hold your phone vertically to see the picture provided by your camera.

3. Level

Swipe left from the start page to use your phone as a level.

Mi Mover

1. Opening the app

Go to Settings > Additional settings > Mi Mover to open the app.

2. Switching from an iPhone to a Mi Phone

You can transfer contacts, photos and videos, calendar events, and notes. Connect both devices to Wi-Fi, open Mi Mover, and tap "I'm a recipient". Select "Import from an iPhone", enter your Apple ID and password, and tap "Sign in" to start the transfer.
(Note: Two-step authentication is required for the device that run iOS 10.3 or later).

Switching from an old Mi Phone to a new Mi Phone

· New device

Open Mi Mover, tap "I'm a recipient", select "Import from an Android phone", and generate QR code.

· Old device

Open Mi Mover, tap "I'm a sender", scan the QR code on the new device, select the items you'd like to transfer, and tap "Send". You won't be able to connect to the internet during the transfer, as Mi Mover uses Wi-Fi to send items.

3. Switching from an Android phone to a Mi Phone

· New Mi Phone

Open Mi Mover, tap "I'm a recipient", select "Import from an Android phone", and generate QR code.

· Old Android phone

Install Mi Mover and open the app. Tap "Start", scan the QR code on the new device, select the items you'd like to transfer, and tap "Send".

Scanner

1. Opening the app

You can open Scanner by tapping the Home screen icon or using shortcuts in Browser, global search, and Mi Wallet.

2. Scanning codes

Besides scanning barcodes and QR codes, you can also recognize codes on the images saved in your Gallery by tapping the icon in the upper right corner of the start page.

3. Shopping

Scan the product you'd like to purchase to search for it in the online e-commerce platforms.

4. Scanning documents

This feature allows you to save scanned documents as images or recognize text and save it as a note. You can also copy the recognized text to clipboard.

Mi Drop user manual

Mi Drop is a file sharing app developed by Xiaomi. This app allows you to share files, music, images, apps, and other items to all Android devices. File transfers in Mi Drop are 200 times faster than Bluetooth transfers. Transfer speeds go up to 50Mbps.

1. How to send a file in Mi Drop?

Open Mi Drop and tap "Send".

Choose files and tap on the send button and wait for the receiver.

Tap on the other person's profile picture and start the transfer.

2. How to receive a file in Mi Drop?

Open Mi Drop App and tap on receive option and wait for the other device to connect.

3. How to establish a connection between the device via QR Code?

Sender device tap on Scan QR code to connect to scan QR code of receiver device.

Receiver device tap on Connecting using QR code to show QR code.

4. How to share Mi Drop with Friends?

Open Mi Drop app and tap on share Mi Drop which will show you Portable hotspot and Bluetooth option.



Correctly dispose of this product. This marking indicates that this product should not be disposed with other household wastes throughout the EU.

To prevent possible harm to the environment or human health from uncontrolled waste disposal, recycle responsibly to promote the sustainable reuse of material resources.

To safely recycle your device, please use return and collection systems or contact the retailer where the device was originally purchased.

For Environment Declaration, pls. refer to below link:

<http://www.mi.com/en/about/environment/>

CAUTION

RISK OF EXPLOSION IF BATTERY IS REPLACED BY AN INCORRECT TYPE.

DISPOSE OF USED BATTERIES ACCORDING TO INSTRUCTIONS.



To prevent possible hearing damage, do not listen at high volume levels for long periods.

For more important safety information, pls. refer to User Manual in below link:

<http://www.mi.com/en/certification/>

Important safety information

- Read all the safety information below before using your device.
- Using unauthorized cables, power adapters, or batteries can cause fire, explosion, or pose other risks.
- Use only authorized accessories which are compatible with your device. This device's operating temperature range is 0 °C ~ 40 °C. Using this device in the environments outside of this temperature range may damage the device.
- If your device is provided with a built-in battery, don't attempt to replace the battery yourself to avoid damaging the battery or the device.
- Charge this device only with the included or authorized cable and power adapter. Using other adapters may cause fire, electric shock, and damage the device and the adapter.
- After charging is complete, disconnect the adapter from both the device and the power outlet. Do not charge the device longer than 12 hours.
- The battery must be recycled or disposed of separately from household waste. Mishandling the battery may cause fire or explosion. Dispose or recycle the device, its battery and accessories according to the local regulations.
- Do not disassemble, hit, crush, or burn the battery. In case of deformation, stop using the battery immediately.
 - Do not short circuit the battery to avoid overheating, burns, or other personal injuries.
 - Do not place the battery in the high-temperature environments. Overheating may cause explosion.
 - Do not disassemble, hit, or crush the battery to avoid battery leaks, overheating, or explosion.
 - Do not burn the battery to avoid fire or explosion.
 - In case of deformation, stop using the battery immediately.
- Keep your device dry.
- Do not try to repair the device yourself. If any part of the device does not work properly, contact Mi customer support or bring your device to an authorized repair center.
- Connect other devices according to their instruction manuals. Do not connect incompatible devices to this device.
- For AC/DC Adapter, the socket-outlet shall be installed near the equipment and shall be easily accessible.



Safety precautions

- Observe any laws and rules which restrict using mobile phones in specific cases and environments.
- Do not use your phone in petrol stations and explosive atmospheres and potentially explosive environments include fuelling areas, below decks on boats, fuel or chemical transfer or storage facilities, areas where the air contains chemicals or particles, such as grain, dust, or metal powders. Obey all posted signs to turn off wireless devices such as your phone or other radio equipment. Turn off your mobile phone or wireless device when in a blasting area or in areas posted turn off “two-way radios” or “electronic devices” to avoid interfering with blasting operations.”
- Do not use your phone in the hospital operating rooms, emergency rooms, or intensive care units. Comply with the current rules and regulations of hospitals and health centers. Please consult your doctor and the device manufacturer to determine if operation of your phone may interfere with the operation of your medical device. To avoid potential interference with the pacemaker, keep a minimum separation of 15 cm between the mobile phone and the pacemaker. To achieve this use the phone on the opposite ear to your pacemaker and do not carry it in a breast pocket. Do not use your phone near hearing aids, cochlear implants, etc to avoid interference with medical equipment.
- Respect aircraft safety regulations and turn off your phone on board the aircraft when required.
- When driving a vehicle, use your phone in accordance with the relevant traffic laws and regulations.
- To avoid lightning strike, do not use your phone outdoors during thunderstorms.
- Do not use your phone to make calls while it is charging.
- Do not use your phones in places with high humidity such as bathrooms. Doing so may result in electric shock, injury, fire, and charger damage.

Security notice

Update your phone's operating system using the built-in software update feature, or visit our authorized service outlets. Updating software through other means may damage the device or result in data loss, security issues, and other risks.

EU Regulations

RED Declaration of Conformity

We, Xiaomi Communications Co., Ltd.



Hereby, Xiaomi Communications Co., Ltd. declares that this GSM/GPRS/EDGE/UMTS/LTE Digital Mobile Phone with Bluetooth and WiFi M1808D2TG is in compliance with the essential requirements and other relevant provisions of the RE Directive 2014/53/EU. The full text of the EU declaration of conformity could be consulted at www.mi.com/en/certification

Body-worn SAR testing has been carried out at a separation distance of 5 mm. To meet RF exposure guidelines during body-worn operation, the device should be positioned at least this distance away from the body.

If you are not using an approved accessory ensure that whatever products used is free of any metal and that it positions the phone with the indicated distance away from the body.

Receiver Category 2

Legal Information

This device may be operated in all member states of the EU.

Observe national and local regulations where the device is used.

This device is restricted to indoor use only when operating in 5150 to 5350Mhz frequency range in following countries:

AT	BE	BG	HR	CY	CZ	DK	
EE	FI	FR	DE	EL	HU	IE	
IT	LV	LT	LU	MT	NL	PL	
PT	RO	SK	SI	ES	SE	UK	

Ensure the power adapter used meets the requirements of Clause 2.5 in IEC60950-1/EN60950-1 and has been tested and approved according to national or local standards.

Manufacturer:

The Rainbow City of China Resources, NO.68, Qinghe Middle Street, Haidian District, Beijing, China 100085

Frequency Bands and Power

This mobile phone offers the following frequency bands in EU areas only and maximum radio-frequency power:

GSM 900: 35 dBm

GSM 1800: 32 dBm

UMTS band 1/8: 25 dBm

LTE band 1/3/7/8/20/28/38/40: 25.7 dBm

Bluetooth: 20 dBm

Wi-Fi 2.4 GHz band: 20 dBm

Wi-Fi 5 GHz band: 20 dBm

FCC Regulations

This mobile phone complies with part 15 of the FCC Rules. Operation is subject to the following two conditions: (1) This device may not cause harmful interference, and (2) this device must accept any interference received, including interference that may cause undesired operation.

This mobile phone has been tested and found to comply with the limits for a Class B digital device, pursuant to Part 15 of the FCC Rules.

These limits are designed to provide reasonable protection against harmful interference in a residential installation. This equipment generates, uses and can radiate radio frequency energy and, if not installed and used in accordance with the instructions, may cause harmful interference to radio communications. However, there is no guarantee that interference will not occur in a particular installation. If this equipment does cause harmful interference to radio or television reception, which can be determined by turning the equipment off and on, the user is encouraged to try to correct the interference by one or more of the following measures:

- Reorient or relocate the receiving antenna.
- Increase the separation between the equipment and receiver.
- Connect the equipment into an outlet on a circuit different from that to which the receiver is connected.
- Consult the dealer or an experienced radio/TV technician for help.

RF Exposure Information (SAR)

This device meets the government's requirements for exposure to radio waves. This device is designed and manufactured not to exceed the emission limits for exposure to radio frequency (RF) energy. The exposure standard for wireless device employs a unit of measurement known as the Specific Absorption Rate, or SAR.

The SAR limit set by the FCC is 1.6W/Kg. For body worn operation, this device has been tested and meets the FCC RF exposure guidelines for use with an accessory that contains no metal and be positioned a minimum of 1.0 cm from the body. Use of other accessories may not ensure compliance with FCC RF exposure guidelines. If you do not use a body-worn accessory and are not holding the device at the ear, position the handset a minimum of 1.0 cm from your body when the device is switched on.

FCC Note

Changes or modifications not expressly approved by the party responsible for compliance could void the user's authority to operate the equipment.

E-label

This device has an electronic label for certification information.

To access it, please select Settings > About Phone > Certification or select Settings, then type "Certification" into the search bar.

Important Safety Information

SAR 10g limit: 2.0W/Kg, SAR Value: Head: 0.749 W/Kg, Body: 1.585 W/Kg (5mm distance).
SAR 1g limit: 1.6W/Kg, SAR Value: Head: 1.15 W/Kg, Body-worn: 1.18 W/Kg (10mm distance).
Hotspot: 1.18 W/Kg (10mm distance).

Temperature: 0 °C - 40 °C

Install the adapter near the device in an easily accessible position.

Model: M1808D2TG

1808 indicate the date of putting the product on the market is 201808

Xiaomi Communications Co., Ltd.
Brand: MI Model: M1808D2TG
All rights reserved by Xiaomi Inc.



000000000000-A